

COMMERCIAL LAND FOR SALE

Near 91st Street & Highway 169 - Tulsa, OK



Land Area - 1.44 Acres per Tulsa County Assessor
(62,894 sq. ft.)

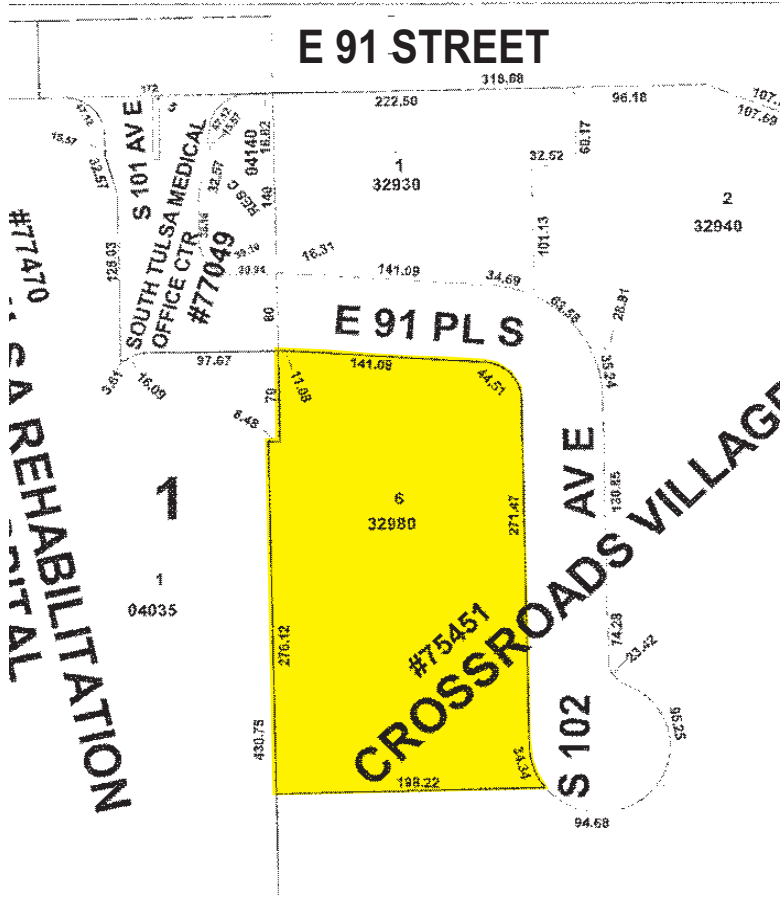
Zoning - CO (Corridor Commercial District)

Contact:
Doug Bauer, CCIM
918-665-1210



BAUER & ASSOCIATES, REALTORS
"A Leader in Tulsa Commercial Real Estate Since 1979"
 COMMERCIAL, INDUSTRIAL, INVESTMENT PROPERTY & PROPERTY MANAGEMENT
 4821 South Sheridan, Suite 201, Tulsa, Oklahoma 74145
 Phone (918) 665-1210 Fax (918) 665-6462 www.bauertulsa.com

Tulsa County Assessor Plat Map



**COMMERCIAL LOT FOR SALE
+/- 1.44 Acres**

**Near 91st and Highway 169
Tulsa, OK**

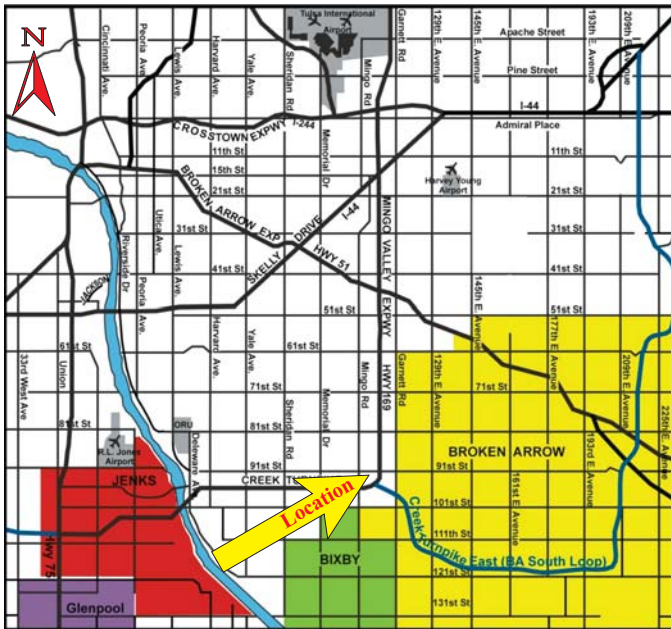
**Great Location for Medical Office,
Surgery Center, Restaurant, Retail
or Professional Office**

**Located near St. Francis South Hospital
and Hillcrest Hospital South**

Easy Highway Access

Utilities to Site

Greater Tulsa Area Map



Demographics:

2018	1 Mile	3 Miles	5 Miles
Population	7,797	87,575	197,671
Households	2,869	33,949	78,890
Avg. HH Income	\$99,023	\$99,940	\$94,239

**Contact:
Doug Bauer, CCIM
918-665-1210**

BAUER & ASSOCIATES, REALTORS

"A Leader in Tulsa Commercial Real Estate Since 1979"

COMMERCIAL, INDUSTRIAL, INVESTMENT PROPERTY & PROPERTY MANAGEMENT

4821 South Sheridan, Suite 201, Tulsa, Oklahoma 74145

Phone (918) 665-1210 Fax (918) 665-6462 www.bauertulsa.com

