

# VACANT LAND FOR SALE

10344 Cherry Valley / M-37  
Caledonia, MI 49316

## AVAILABILITY

- 1.5 - 4.95 Acres
- Available at close

## SALE TERMS

- \$295,000 - \$495,000

## BUILDING AMENITIES

- 1.5 - 4.95 ACRES AVAILABLE
- ALL MUNICIPAL UTILITIES WILL BE AVAILABLE
- ZONING: PUD WITH M-37 HWY OVERLAY
- MUNICIPALITY: CALEDONIA TOWNSHIP



## FOR SALE - VACANT LAND

10344 Cherry Valley / M-37, Caledonia, MI 49316

### VACANT LAND AVAILABLE

New development site opportunity with excellent frontage on Cherry Valley / M-37, Caledonia, MI. 1.5 - 4.95 acres available. Zoned PUD with M-37 overlay. All municipal utilities will be at the site. New apartment/condo and self-storage development surrounding site are in process now.

## CONTACT US

Steve Delanoy

P: 616.481.9200

E: [steve.delanoy@firstcompanies.com](mailto:steve.delanoy@firstcompanies.com)

**YOUR SPACE, OUR BUSINESS**  
REAL ESTATE | CONSTRUCTION | PROPERTY MANAGEMENT

4380 Brockton Drive Southeast, Suite 1, Grand Rapids, Michigan 49512  
Phone: 616.698.5000 | Web: [FirstCompanies.com](http://FirstCompanies.com)

**FIRST**  
COMPANIES

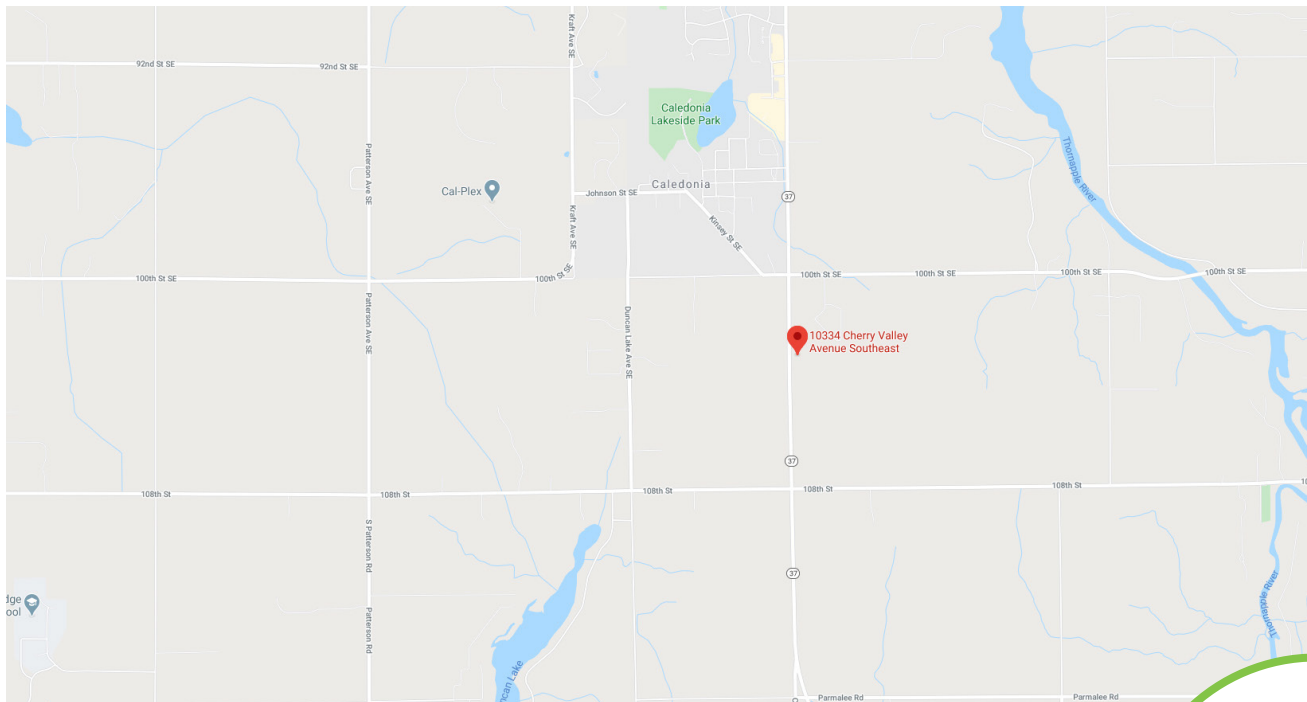
# YOUR SPACE, OUR BUSINESS

REAL ESTATE | CONSTRUCTION | PROPERTY MANAGEMENT

## SATELLITE VIEW



## MAP VIEW



CONTACT  
US

**AGENT: STEVE DELANOY**

616.698.5000 | Office

616.481.9200 | Mobile

[steve.delanoy@firstcompanies.com](mailto:steve.delanoy@firstcompanies.com)

4380 Brockton Drive Southeast, Suite 1, Grand Rapids, Michigan 49512

Phone: 616.698.5000 | Web: [FirstCompanies.com](http://FirstCompanies.com)



**FIRST  
COMPANIES**

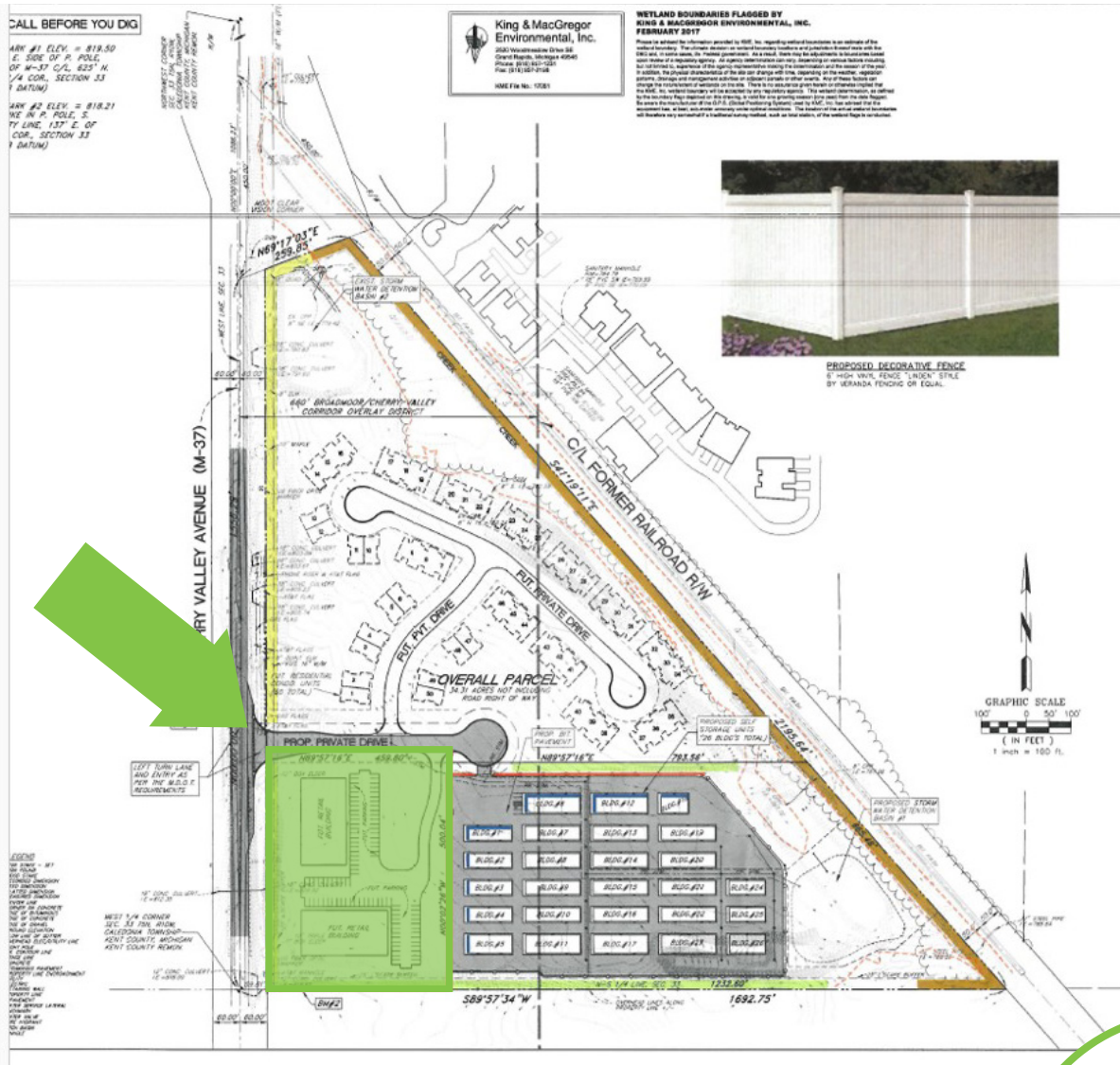
# YOUR SPACE, OUR BUSINESS

REAL ESTATE | CONSTRUCTION | PROPERTY MANAGEMENT

## LAND PARCEL



## SITE PLAN



CONTACT  
US

**AGENT: STEVE DELANOY**

616.698.5000 | Office  
616.481.9200 | Mobile

[steve.delanoy@firstcompanies.com](mailto:steve.delanoy@firstcompanies.com)

4380 Brockton Drive Southeast, Suite 1, Grand Rapids, Michigan 49512  
Phone: 616.698.5000 | Web: [FirstCompanies.com](http://FirstCompanies.com)



**FIRST  
COMPANIES**