

INDUSTRIAL FOR LEASE

4540 East Paris Ave. SE
Grand Rapids, MI 49512

AVAILABILITY

- Suite F: 6,100 SF
- Available February 2021

TERMS

- 60 Months
- \$5.95/SF, NNN

BUILDING AMENITIES

- AMPLE PARKING
- 20' CEILINGS
- ZONED: I-1, INDUSTRIAL
- LOADING DOCKS: 1
- DRIVE-IN DOORS: 1
- OFFICE SF/PERC: 33%
- NEAR BROADMOOR, GERALD R. FORD INTL AIRPORT, AND M-6
- CITY OF KENTWOOD



FOR LEASE - INDUSTRIAL PROPERTY

4540 East Paris Ave. SE, Grand Rapids, MI 49512

EFFICIENT SPACE IN CONVENIENT LOCATION

Nice, efficient space conveniently located on East Paris Avenue within close proximity to Broadmoor Avenue (M-37), Gerald R Ford International Airport and M-6. 1 suite available.

CONTACT US

Ty Hallock, CCIM

P: 616.915.9800

E: ty.hallock@firstcompanies.com

Matt Abraham, CCIM

P: 616.560.4543

E: matt.abraham@firstcompanies.com



YOUR SPACE, OUR BUSINESS
REAL ESTATE | CONSTRUCTION | PROPERTY MANAGEMENT

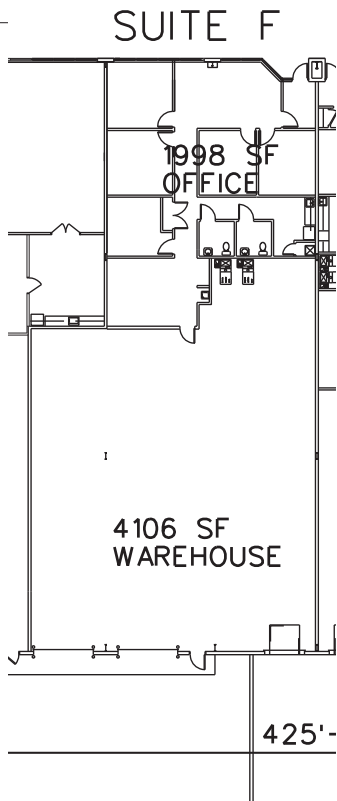
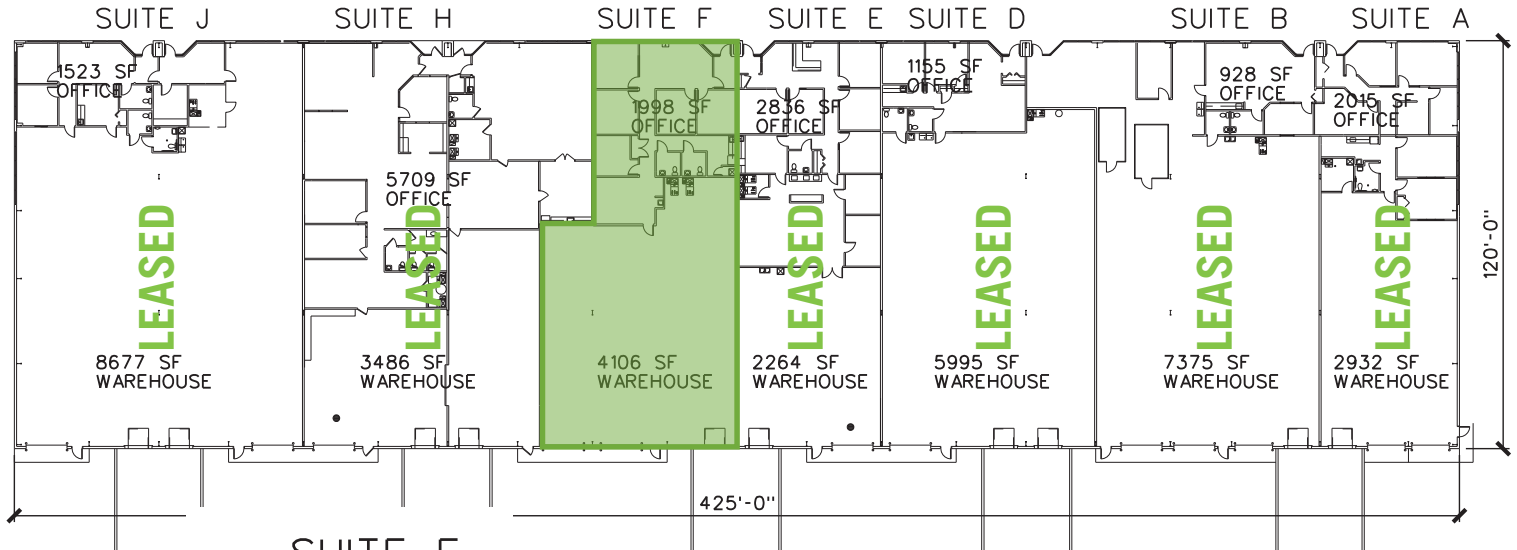
4380 Brockton Drive Southeast, Suite 1, Grand Rapids, Michigan 49512
Phone: 616.698.5000 | Web: FirstCompanies.com



YOUR SPACE, OUR BUSINESS

REAL ESTATE | CONSTRUCTION | PROPERTY MANAGEMENT

FLOOR PLAN



TOTAL SF	OFFICE SF	MFG/WHS SF
6,100	1,998	4,106

RATE/SF	RATE/MONTH	LOADING DOCKS	LOADING DOORS
\$5.95	\$3,025	1	2

CONTACT US

AGENT: TY HALLOCK CCIM
 616.698.5000 | Ext. 149
 616.915.9800 | Mobile
ty.hallock@firstcompanies.com

AGENT: MATT ABRAHAM CCIM
 616.698.5000 | Ext. 152
 616.560.4543 | Mobile
matt.abraham@firstcompanies.com

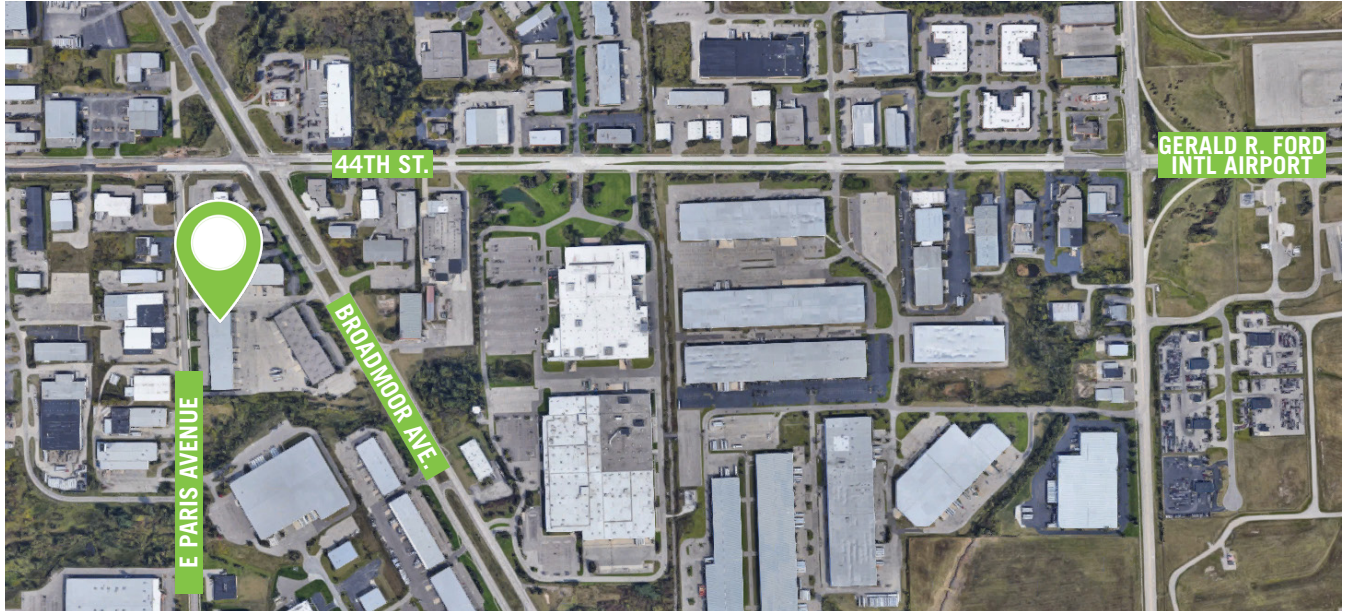


4380 Brockton Drive Southeast, Suite 1, Grand Rapids, Michigan 49512
 Phone: 616.698.5000 | Web: FirstCompanies.com

YOUR SPACE, OUR BUSINESS

REAL ESTATE | CONSTRUCTION | PROPERTY MANAGEMENT

SATELLITE VIEW



BUILDING OVERVIEW



CONTACT
US

AGENT: TY HALLOCK CCIM

616.698.5000 | Ext. 149

616.915.9800 | Mobile

ty.hallock@firstcompanies.com

AGENT: MATT ABRAHAM CCIM

616.698.5000 | Ext. 152

616.560.4543 | Mobile

matt.abraham@firstcompanies.com

4380 Brockton Drive Southeast, Suite 1, Grand Rapids, Michigan 49512
Phone: 616.698.5000 | Web: FirstCompanies.com



FIRST
COMPANIES