

INDUSTRIAL FOR SALE

4501-4525 Broadmoor Ave. SE
Kentwood, MI 49512

AVAILABILITY

- Suite 4503 - 1,495 SF
- Suite 4505 - 2,122 SF
- Suite 4509B - 1,971 SF

TERMS

- 60 months, NNN
- CAM (2018 estimated)
\$2.15/SF

BUILDING AMENITIES

- 18-20' CEILING HEIGHTS
- 12-14' DRIVE-IN DOORS
- GREAT VISIBILITY ON BROAD-
MOOR
- FRONT AND REAR ENTRANCES
- ZONED: LIGHT INDUSTRIAL
- 1 MILE FROM GERALD R.
FORD AIRPORT
- 2 MILES FROM M-6 AND 3.6
MILES FROM I-96



FOR LEASE - INDUSTRIAL PROPERTY

4501-4525 Broadmoor Ave SE, Kentwood, MI 49512

INDUSTRIAL SPACE AVAILABLE

Nice corporate complex with separate front and rear entrances. Excellent location just a short distance from the Gerald R. Ford International Airport, with great access to M-6 and I-96. Office and light industrial suites available

CONTACT US

Ty Hallock

P: 616.915.9800

E: ty.hallock@firstcompanies.com

Matt Abraham

P: 616.560.4543

E: matt.abraham@firstcompanies.com



YOUR SPACE, OUR BUSINESS
REAL ESTATE | CONSTRUCTION | PROPERTY MANAGEMENT

4380 Brockton Drive Southeast, Suite 1, Grand Rapids, Michigan 49512
Phone: 616.698.5000 | Web: FirstCompanies.com

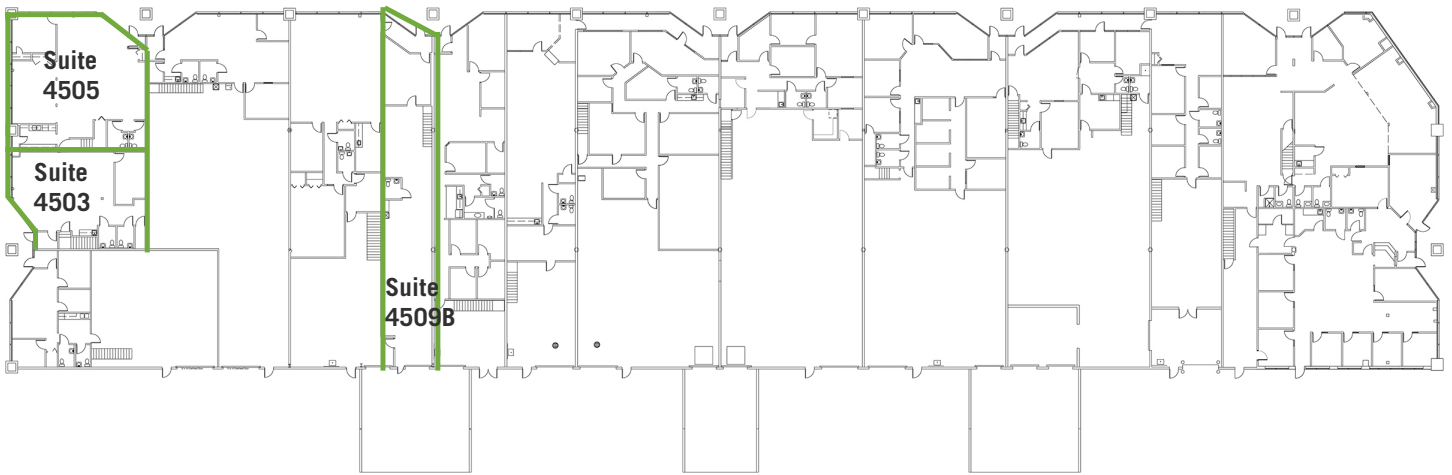


YOUR SPACE, OUR BUSINESS

REAL ESTATE | CONSTRUCTION | PROPERTY MANAGEMENT

SUITE	RSF	OFFICE SF	MFG/WHS SF	RATE/SF	RATE/MONTH	DOCKS	DRIVE-INS
4503	1,495	1,495	N/A	\$9.00	\$1,121	0	0
4505	2,122	2,122	N/A	\$8.00	\$1,414	0	0
4509B	1,971	1,971	N/A	\$5.95	\$977	0	0

FLOOR PLAN



AERIAL VIEW



CONTACT
US

AGENT: TY HALLOCK CCIM

616.698.5000 | Ext. 149

616.915.9800 | Mobile

ty.hallock@firstcompanies.com

AGENT: MATT ABRAHAM CCIM

616.698.5000 | Ext. 152

616.560.4543 | Mobile

matt.abraham@firstcompanies.com

4380 Brockton Drive Southeast, Suite 1, Grand Rapids, Michigan 49512

Phone: 616.698.5000 | Web: FirstCompanies.com



FIRST
COMPANIES