



M E R I D I A N

147 S. CHERRY STREET, SUITE 200 | WINSTON-SALEM, NC 27101 | P 336.722.1986 | F 336.723.3173

Standalone Office With Highway Visibility

# 2011 Veasley Street

Greensboro, NC 27407



4,532± SF of well-appointed office space on 0.61± acre. Located on Veasley Street, this property is ideal for a tenant who desires easy access to I-40, bright windowed offices, highway visibility, and on-site parking. The property is a stone's throw from the Koury Convention Center and Sheraton Four Seasons, and is five miles from downtown Greensboro. This two-story office building features a large conference room, individual offices, reception area, and full break room with patio. Its 2-level design offers the ability to house two different divisions of a company or as one as it currently functions.

**FOR SALE: \$795,000.00**  
**FOR LEASE: \$14.00 PSF**

For More Information:

**William T. Bartholomew, Jr.**

William@meridianrealty.com

336.480.2335

**Charlie H. Fulk, CCIM**

Cfulk@meridianrealty.com

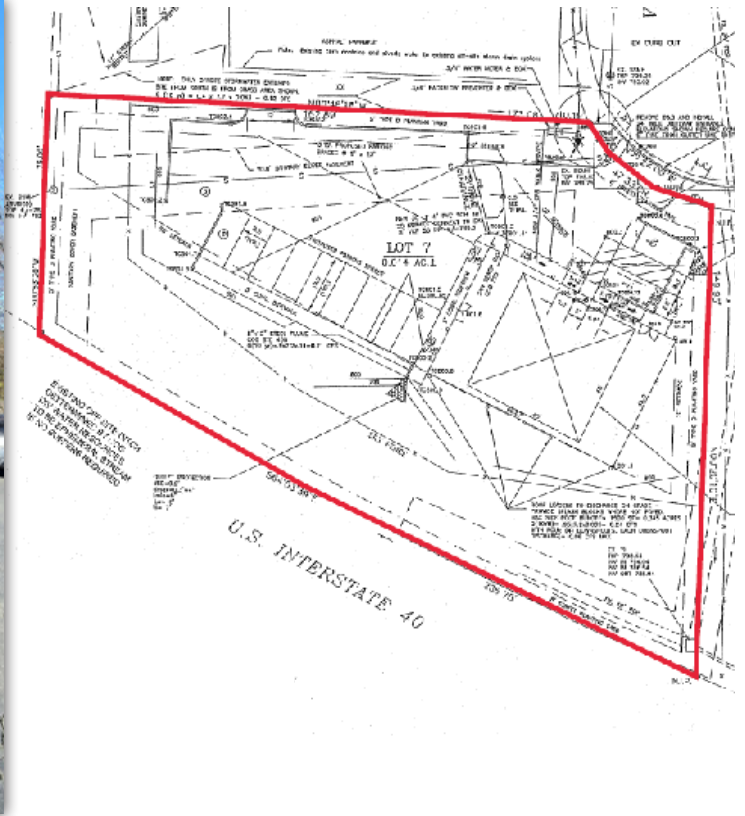
336.480.2089

WWW.MERIDIANREALTY.COM

EXTERIOR IMAGE



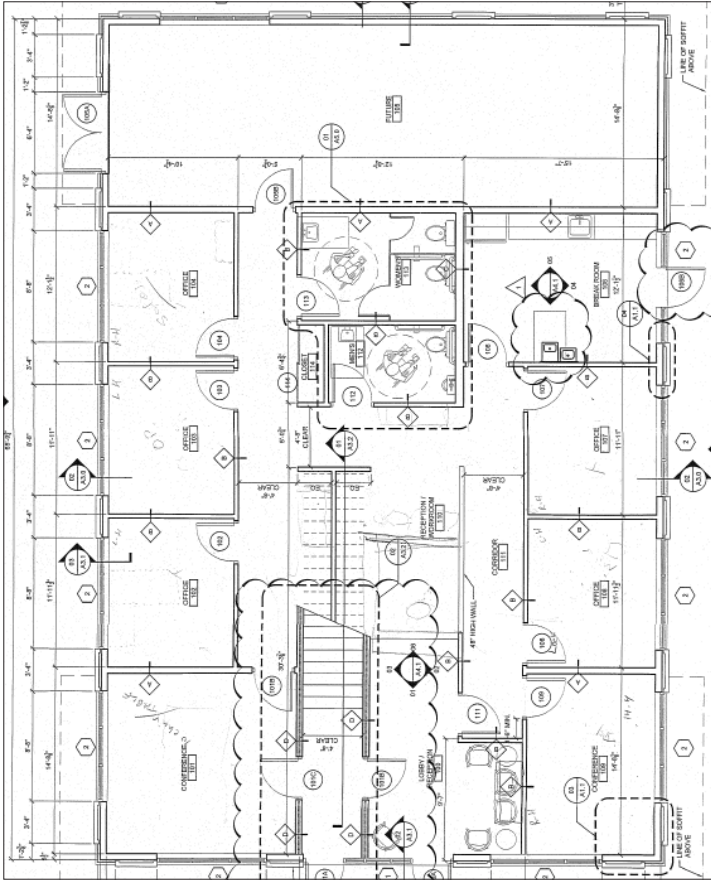
SITE PLAN



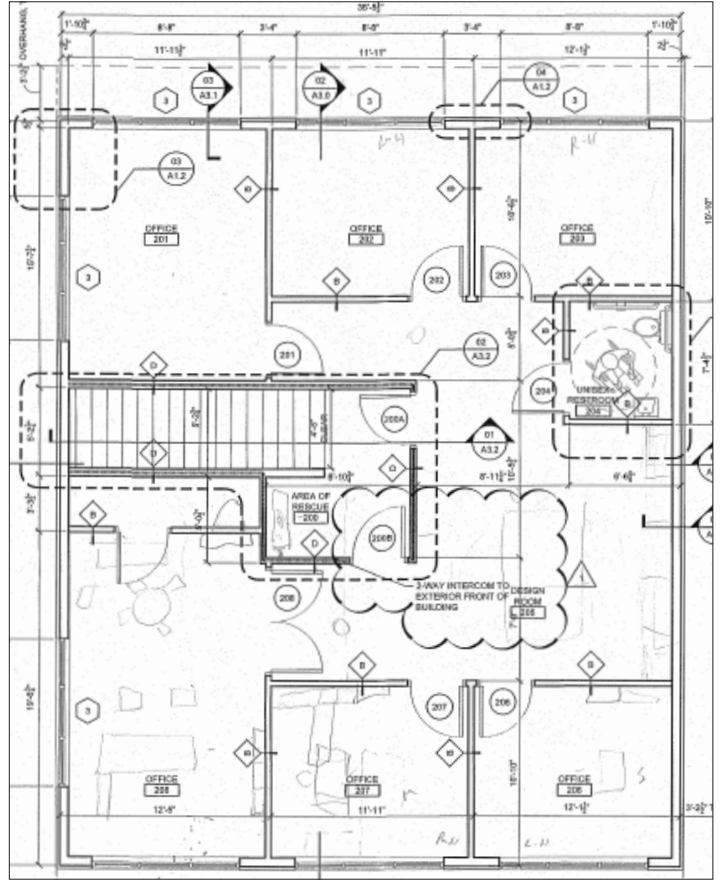
AERIAL IMAGE



FLOOR PLAN - 1ST FLOOR

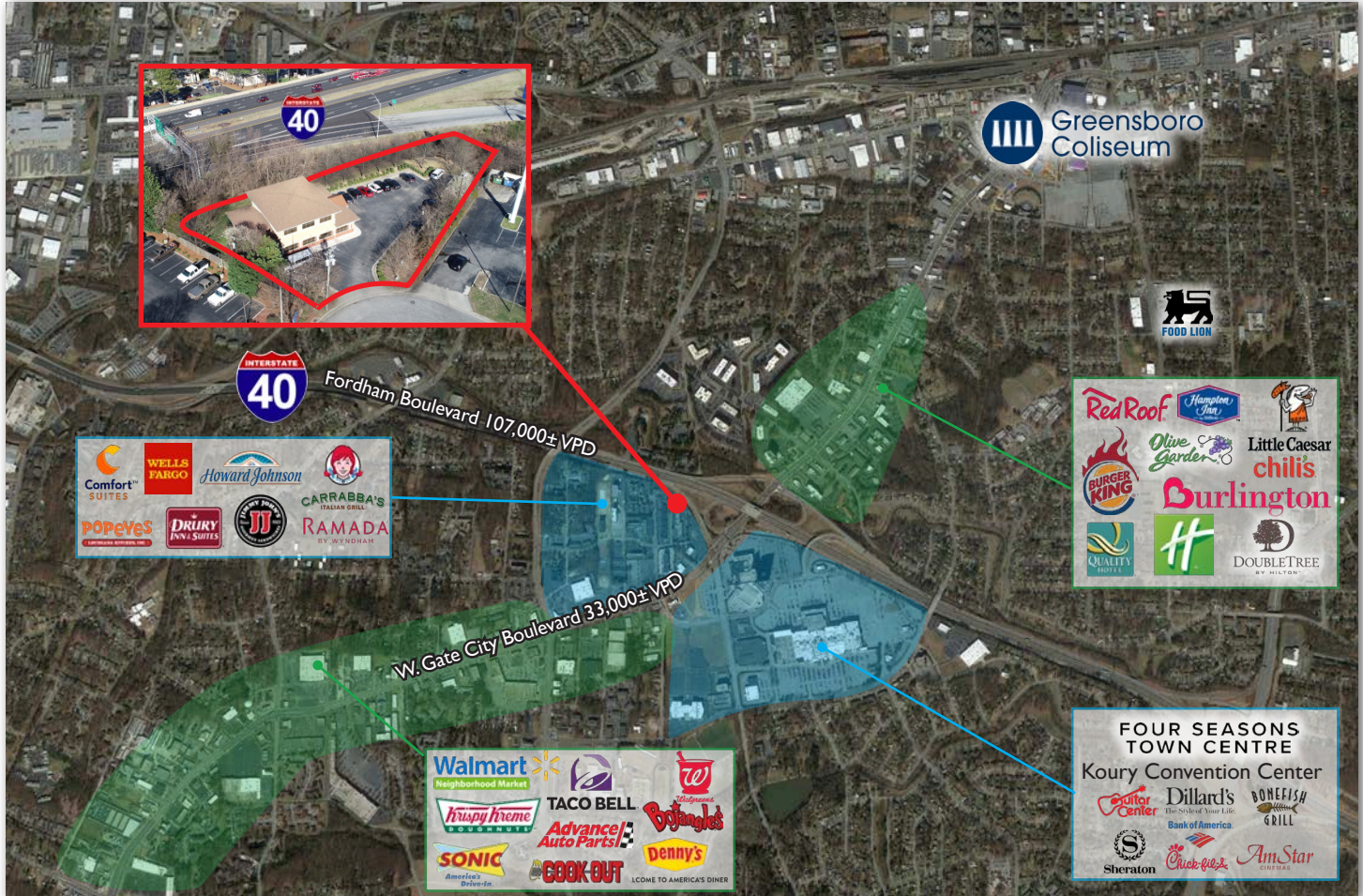


FLOOR PLAN - 2ND FLOOR

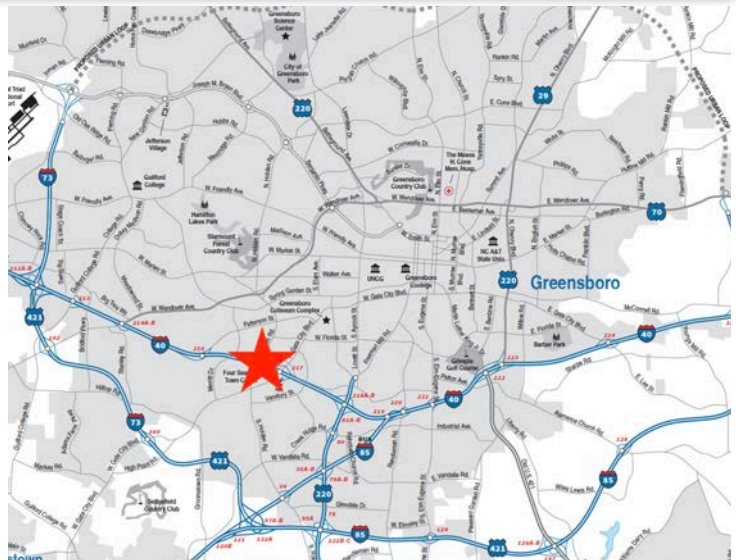


INTERIOR IMAGES





- 🌀 4,532± SF on 0.61± AC
- 🌀 Easy access to I-40 and 5 miles from downtown Greensboro
- 🌀 Flexible floorplan allows two multiple uses
- 🌀 Zoned C-M
- 🌀 For Sale: \$795,000.00
- 🌀 For Lease: \$14.00 PSF NNN



No warranty or representation (express or implied) is made as to the accuracy or completeness of the information set forth herein. All information is submitted subject to errors, omissions, change of price, prior lease or sale, and withdrawal without notice. All marketing material produced by the Meridian Realty Group is proprietary. Any reproduction is expressly prohibited.



THE MERIDIAN REALTY GROUP | 147 S. CHERRY STREET, SUITE 200 | WINSTON-SALEM, NC 27101  
 P 336.722.1986 | F 336.723.3173