



M E R I D I A N

147 S. CHERRY STREET, SUITE 200 | WINSTON-SALEM, NC 27101 | P 336.722.1986 | F 336.723.3173

LEASE: 6,024± SF Office

# 210-B Charlois Boulevard

Winston-Salem, NC 27103



Superb office property for lease in Stratford Executive Park. New upfit in 2018. Close to hospital, banks, restaurants, hotels, and Hanes Mall. Excellent access. Adjacent to Silas Creek Parkway and I-40. Available April 1, 2021 or possibly sooner.

For more information:

**John L. Ruffin, CCIM**

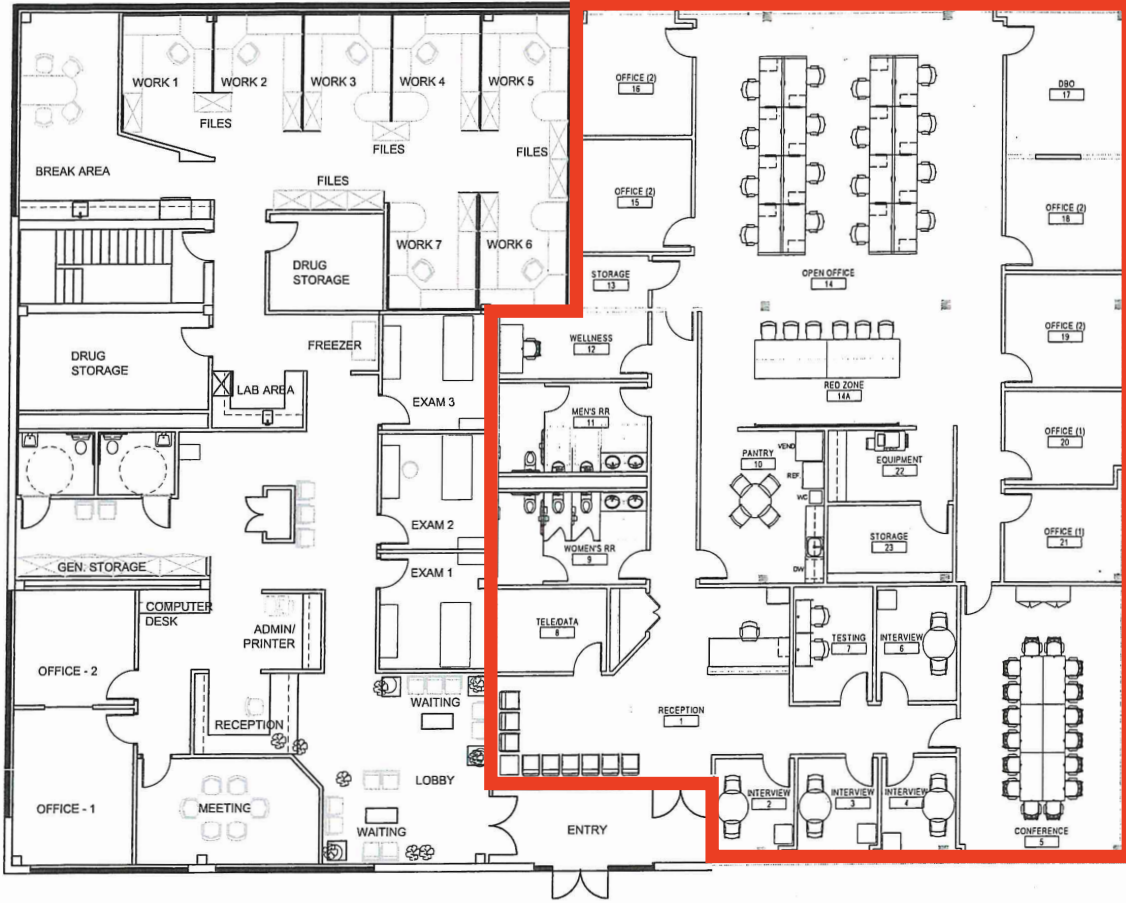
Jruffin@meridianrealty.com

336.480.2081

WWW.MERIDIANREALTY.COM

FLOOR PLAN

6,024± SF



6,024± SF



Great location in Stratford Executive Park



Improvements are like new



Covered parking, 54 total spaces



Renovated in 2018



Close to hospital, banks, restaurants, hotels, and Hanes Mall



Easy access to Silas Creek Pkwy & I-40



For Lease: \$17.50 PSF, full service



No warranty or representation (express or implied) is made as to the accuracy or completeness of the information set forth herein. All information is submitted subject to errors, omissions, change of price, prior lease or sale, and withdrawal without notice. All marketing material produced by the Meridian Realty Group is proprietary. Any reproduction is expressly prohibited.



THE MERIDIAN REALTY GROUP | 147 S. CHERRY STREET, SUITE 200 | WINSTON-SALEM, NC 27101  
P 336.722.1986 | F 336.723.3173