

For Sale

Office/Warehouse Building

8507 S Regency Dr., Tulsa, OK 74131

WIGGIN
PROPERTIES, LLC



Property Features

- $\pm 3,250$ SF Total Situated on ± 5.03 Acres
 - $\pm 2,250$ SF Warehouse
 - $\pm 1,000$ SF Office
- Partially Hard Surfaced Compacted Gravel
- Partially Fenced and Gated
- 24' Clear Height
- (2) 14' x 16' Overhead Doors; Pull Thru Capability
- Existing Crane Rail
- Plumbed for Air
- 600 AMP 480 Volt 3-Phase Power
- Zoned Industrial
- Located in Federal Opportunity Zone



Call Shawna Hale, CCIM, or John Watchous at **918.935.2010**

shale@wiggprop.com | jwatchous@wiggprop.com | wiggprop.com

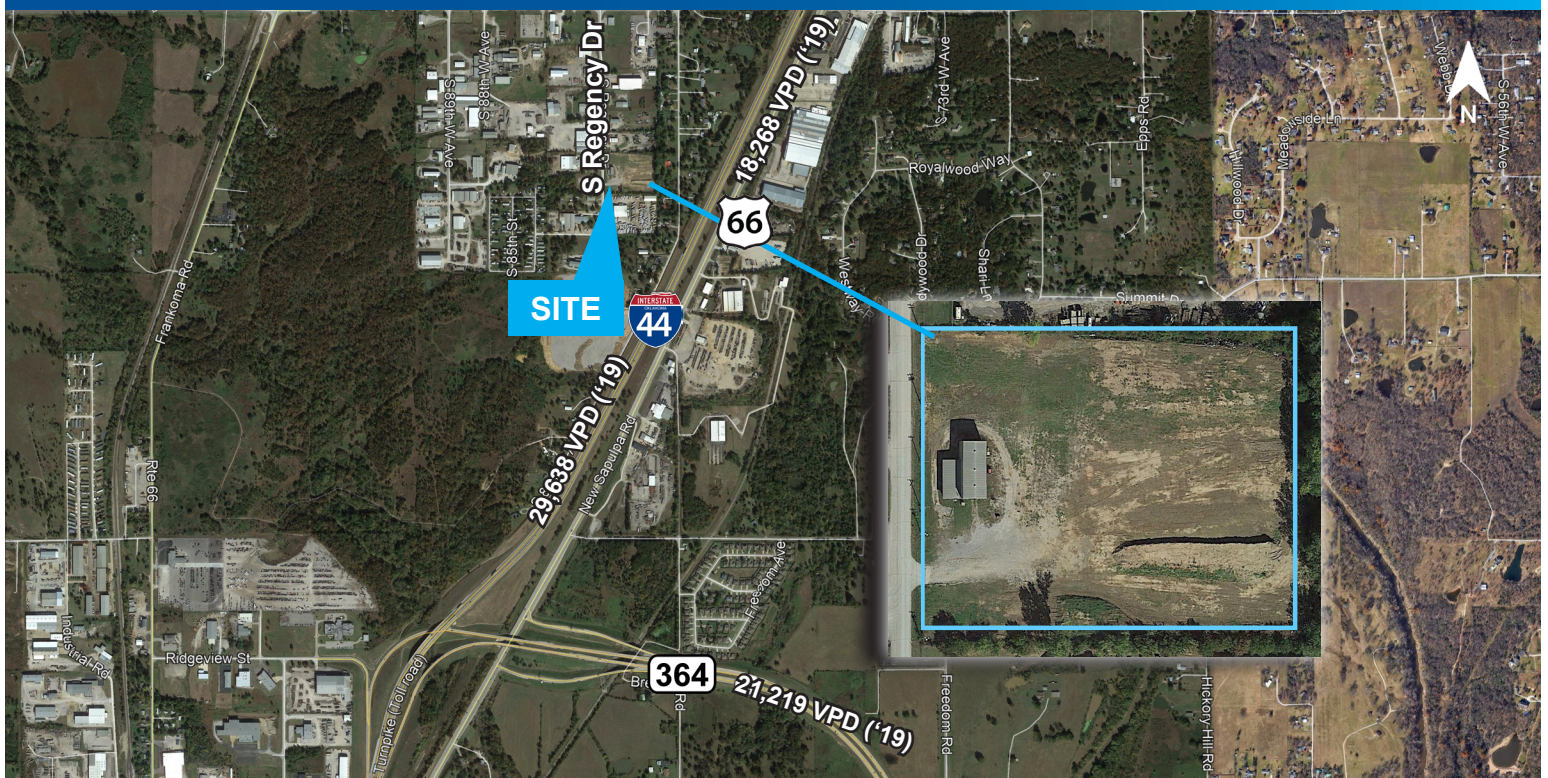
This material is provided for information purposes only. It is from sources believed to be reliable. However, Wiggin Properties makes no warranties or representations, expressed or implied, as to the accuracy or sufficiency of the information. It is presented subject to errors, omissions, changes or withdrawal without notice. Square footage is provided by the local County Assessor or the Owner. Photos and graphics with copyrights by CoStar, Google, Wiggin Properties and independent contractors are used with permission.

For Sale

Office/Warehouse Building

8507 S Regency Dr., Tulsa, OK 74131

WIGGIN
PROPERTIES, LLC



Call Shawna Hale, CCIM, or John Watchous at **918.935.2010**

shale@wiginprop.com | jwatchous@wiginprop.com | wiginprop.com

This material is provided for information purposes only. It is from sources believed to be reliable. However, Wiggin Properties makes no warranties or representations, expressed or implied, as to the accuracy or sufficiency of the information. It is presented subject to errors, omissions, changes or withdrawal without notice. Square footage is provided by the local County Assessor or the Owner. Photos and graphics with copyrights by CoStar, Google, Wiggin Properties and independent contractors are used with permission.