

For Sale or Lease

Warehouse Distribution Facility

710 S Adams Sapulpa, OK 74066

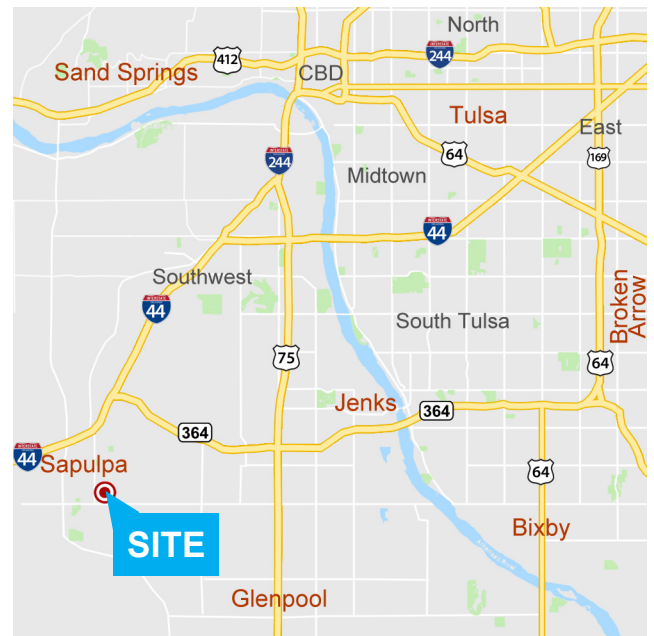
WIGGIN
PROPERTIES, LLC



This $\pm 25,740$ SF warehouse distribution facility is located on ± 1.72 acres in the heart of Sapulpa, OK.

Property Features

- $\pm 25,740$ SF Total
- $\pm 5,400$ SF Office
- ± 1.72 Acres Site
- Partially Fenced and Hard Surfaced
- Ample Parking
- 19' Clear Height
- (3) 10' x 12' Overhead Doors
- (2) 10' x 8' Dock Doors
- Zoned UC (Urban Commercial)



Call Shawna Hale, CCIM, or John Watchous at **918.935.2010**

shale@wigginprop.com | jwatchous@wigginprop.com | wigginprop.com

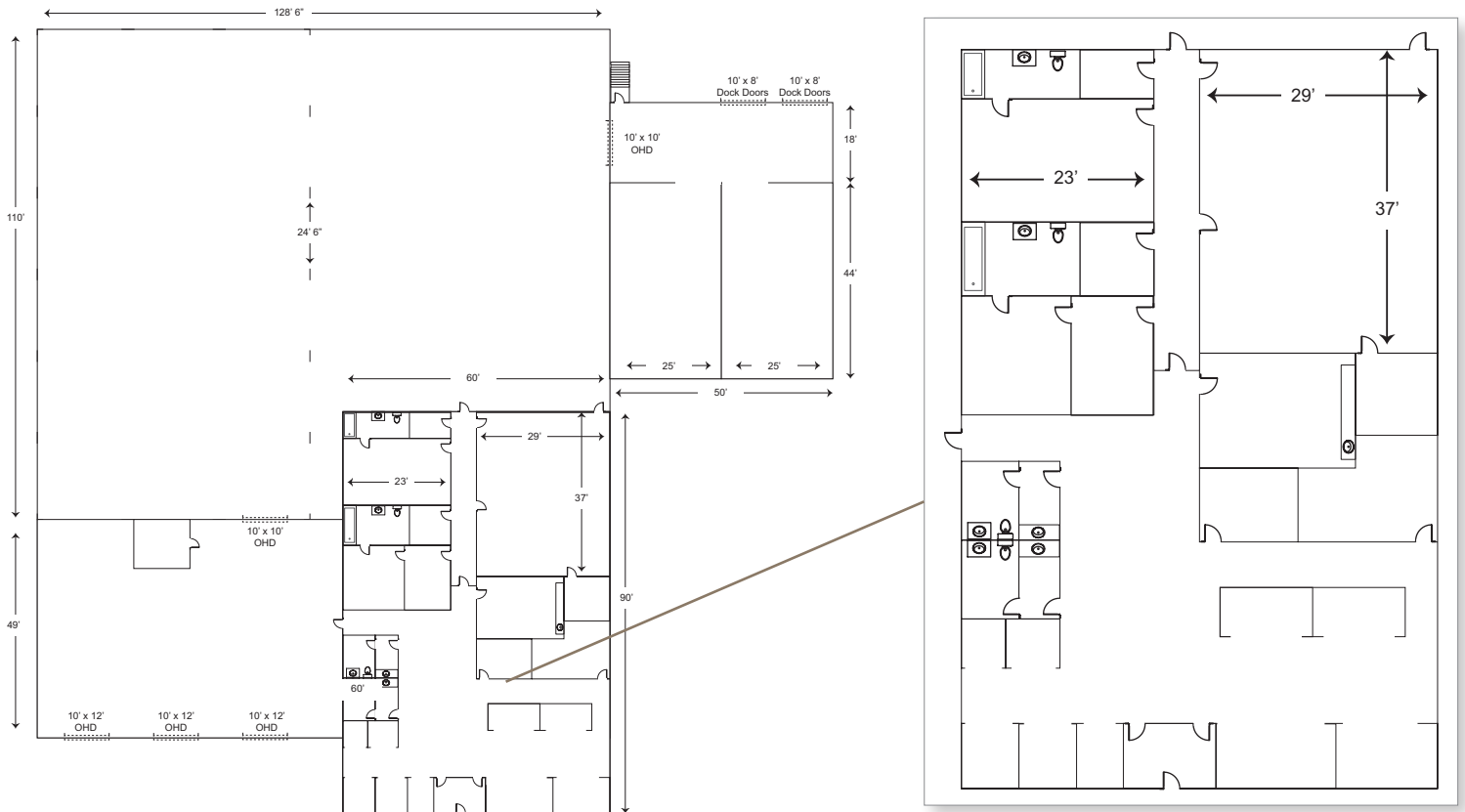
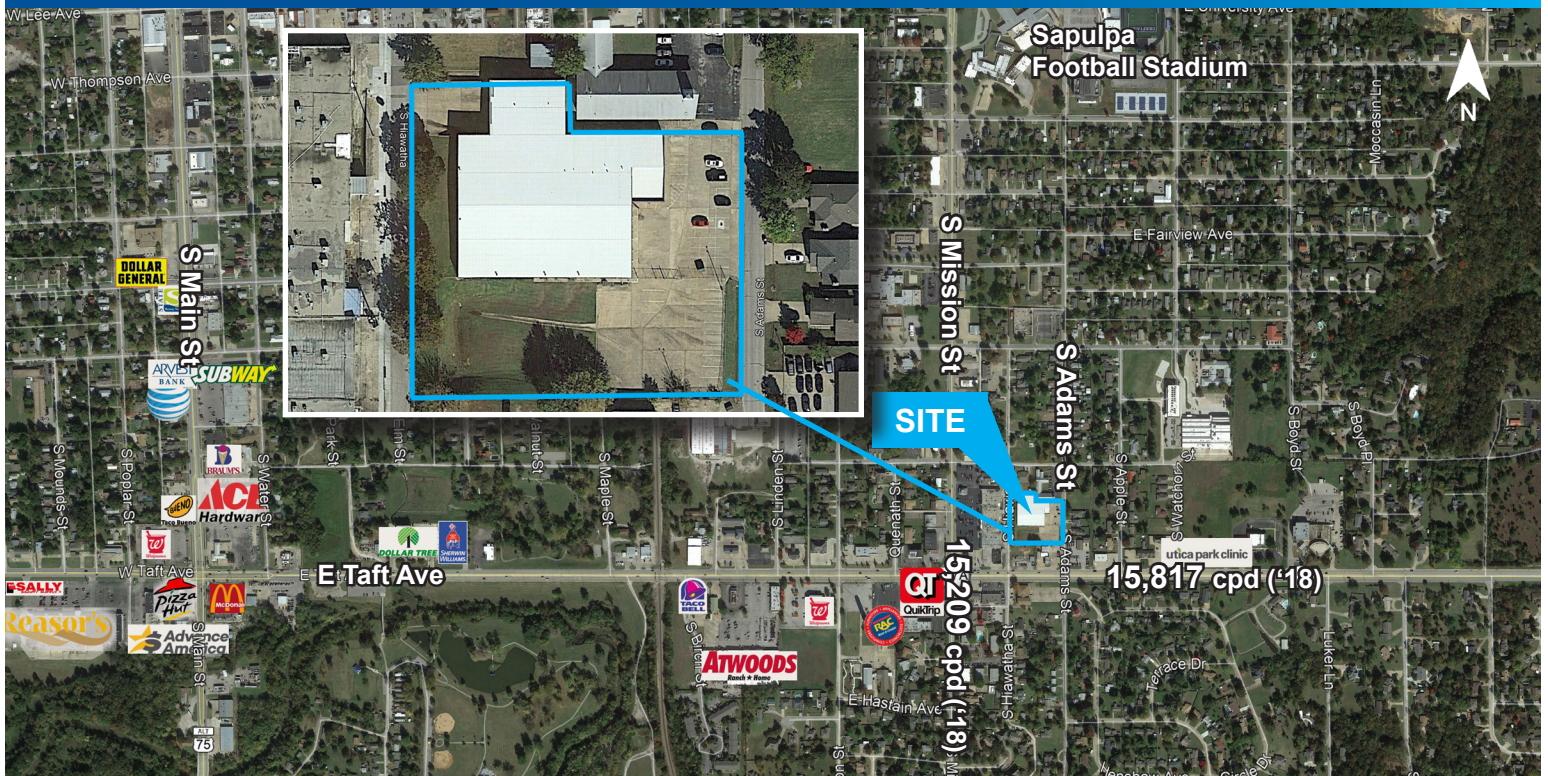
This material is provided for information purposes only. It is from sources believed to be reliable. However, Wiggin Properties makes no warranties or representations, expressed or implied, as to the accuracy or sufficiency of the information. It is presented subject to errors, omissions, changes or withdrawal without notice. Square footage is provided by the local County Assessor or the Owner. Photos and graphics with copyrights by CoStar, Google, Wiggin Properties and independent contractors are used with permission.

For Sale or Lease

Warehouse Distribution Facility

710 S Adams Sapulpa, OK 74066

WIGGIN
PROPERTIES, LLC



Call Shawna Hale, CCIM, or John Watchous at **918.935.2010**

shale@wiginprop.com | jwatchous@wiginprop.com | wiginprop.com

This material is provided for information purposes only. It is from sources believed to be reliable. However, Wiggin Properties makes no warranties or representations, expressed or implied, as to the accuracy or sufficiency of the information. It is presented subject to errors, omissions, changes or withdrawal without notice. Square footage is provided by the local County Assessor or the Owner. Photos and graphics with copyrights by CoStar, Google, Wiggin Properties and independent contractors are used with permission.