

For Sale

# Ryder Truck Property-Archbold

29,400SF- 30,000SF Covered Storage- 14 Acres



## Ryder Truck Property

1101 East Lutz Rd  
Archbold, Ohio 43502

### Property Highlights

- 29,400sf Truck Maintenance Facility, with Many Possible Uses
- 30,000sf Cover Truck/Storage Building
- 14 Acres- 8 Acres of Paved Concrete- Fenced/Gated
- Proximity to Major Highways, including Ohio Turnpike and US 6
- Strong Manufacturing and Agricultural Community

### Property Description

The Ryder Truck property is located on E Lutz Rd adjacent to Sauder Woodworking. It contains a 29,400sf truck service facility as well as a 30,000sf covered truck/storage building. It also includes over eight acres of concrete paving. The property can also be used as truck maintenance, warehousing, equipment storage, contractor location, or farm implement sales. It is fenced and gated, and adjacent to rail. The property is minutes from the Ohio Turnpike and US 6.

### OFFERING SUMMARY

<b>Sale Price</b>	\$1,500,000
<b>Lot Size</b>	14.01 Acres
<b>Building Size</b>	29,400 SF+30,000 SF

### DEMOGRAPHICS

<b>Stats</b>	<b>Population</b>	<b>Avg. HH Income</b>
<b>5 Miles</b>	9,167	\$58,484
<b>10 Miles</b>	27,338	\$57,944
<b>20 Miles</b>	117,527	\$55,148

For more information



**Mark Baringer**

O: 419 960 4410 x317  
mbaringer@naiharmon.com

For Sale

## Former Ryder Truck Property



### PROPERTY DESCRIPTION

The Ryder Truck property is located on E Lutz Rd adjacent to Sauder Woodworking. It contains a 29,400sf truck service facility as well as a 30,000sf covered truck/storage building. It also includes over eight acres of concrete paving. The property can also be used as truck maintenance, warehousing, equipment storage, contractor location, or farm implement sales. It is fenced and gated, and adjacent to rail. The property is minutes from the Ohio Turnpike and US 6.

### LOCATION DESCRIPTION

The subject is located in the village of Archbold, Ohio. Archbold is located in NW Ohio, close to I-80/90 Ohio Turnpike and US 6. It is also just south of the intersection of US 20A and SR 66. Archbold is a regional manufacturing hub and jobs center with a dynamic entrepreneurial history. It is the corporate headquarters of Sauder Woodworking, North America's leading producer of ready-to-assemble (RTA) furniture and one of the top five residential furniture manufacturers in the United States.



Other companies and plants include ConAgra (with new \$40 million expansion), Green Bay Packaging, Sauder Manufacturing, Frozen Specialties, Haulotte Group/BilJax, Sanoh America and Napoleon/Lynx Spring Works.

Northwest State Community College is located just south of town, along with Four County Joint Vocational School. Archbold also has a strong agricultural history and base.

For Sale

# Industrial Property

29,400 SF | \$1,500,000

## GENERAL INFORMATION

<b>Property:</b>	Ryder Truck Property
<b>Location:</b>	1101 E Lutz Rd
<b>Closest Intersection:</b>	N Clydes Way
<b>City, State:</b>	Archbold, OH
<b>County:</b>	Fulton
<b>Zip:</b>	43502
<b>Parcel No:</b>	17-034375-06.001

## PROPERTY INFORMATION

<b>Building SF (Min/Max):</b>	29,400sf/ 30,000sf Cov Storage
<b>Building Dimensions:</b>	Main- 100x270 plus 30x80 office
<b>Available Area:</b>	All
<b>Land Size:</b>	14.01 acre
<b>Land Dimensions:</b>	Irregular
<b>Parking:</b>	Concrete
<b>Zoning:</b>	M-2 General Industrial
<b>Current Use:</b>	Truck Service-Terminal

## BUILDING DETAILS

<b>Year Built:</b>	1998
<b>Type Construction:</b>	Metal/Conc Block
<b>Heat Fuel/Type:</b>	Gas- Various
<b>Ceiling Height (Min/Max):</b>	18' clear at eaves, 20' clear at center
<b>Air Conditioning:</b>	Yes
<b>Building Class:</b>	C
<b>Roof:</b>	Metal
<b>Floor:</b>	Concrete Slab
<b>Lighting:</b>	Various

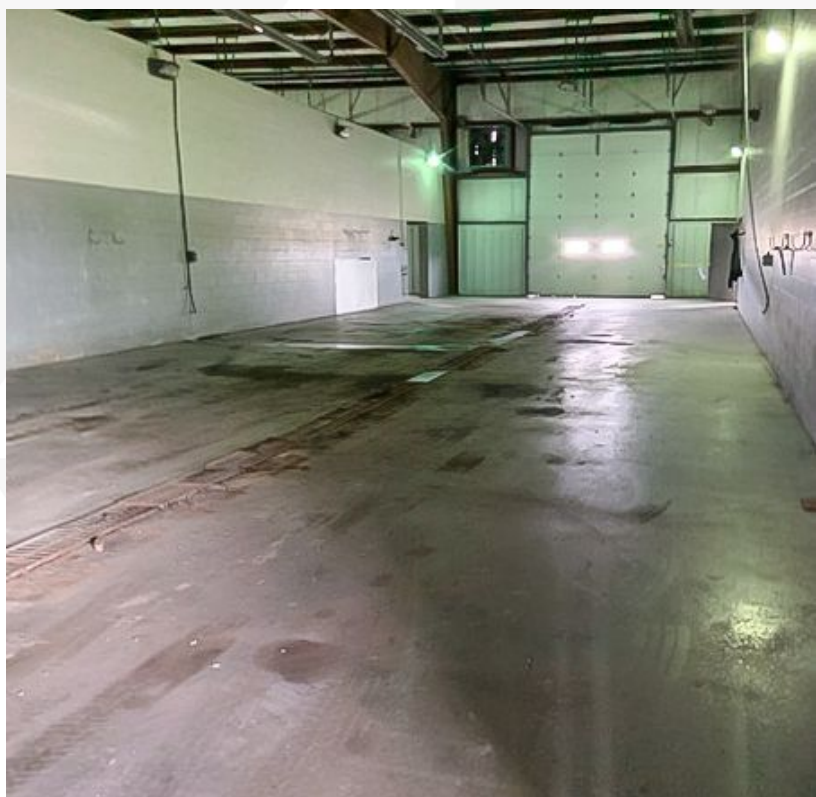
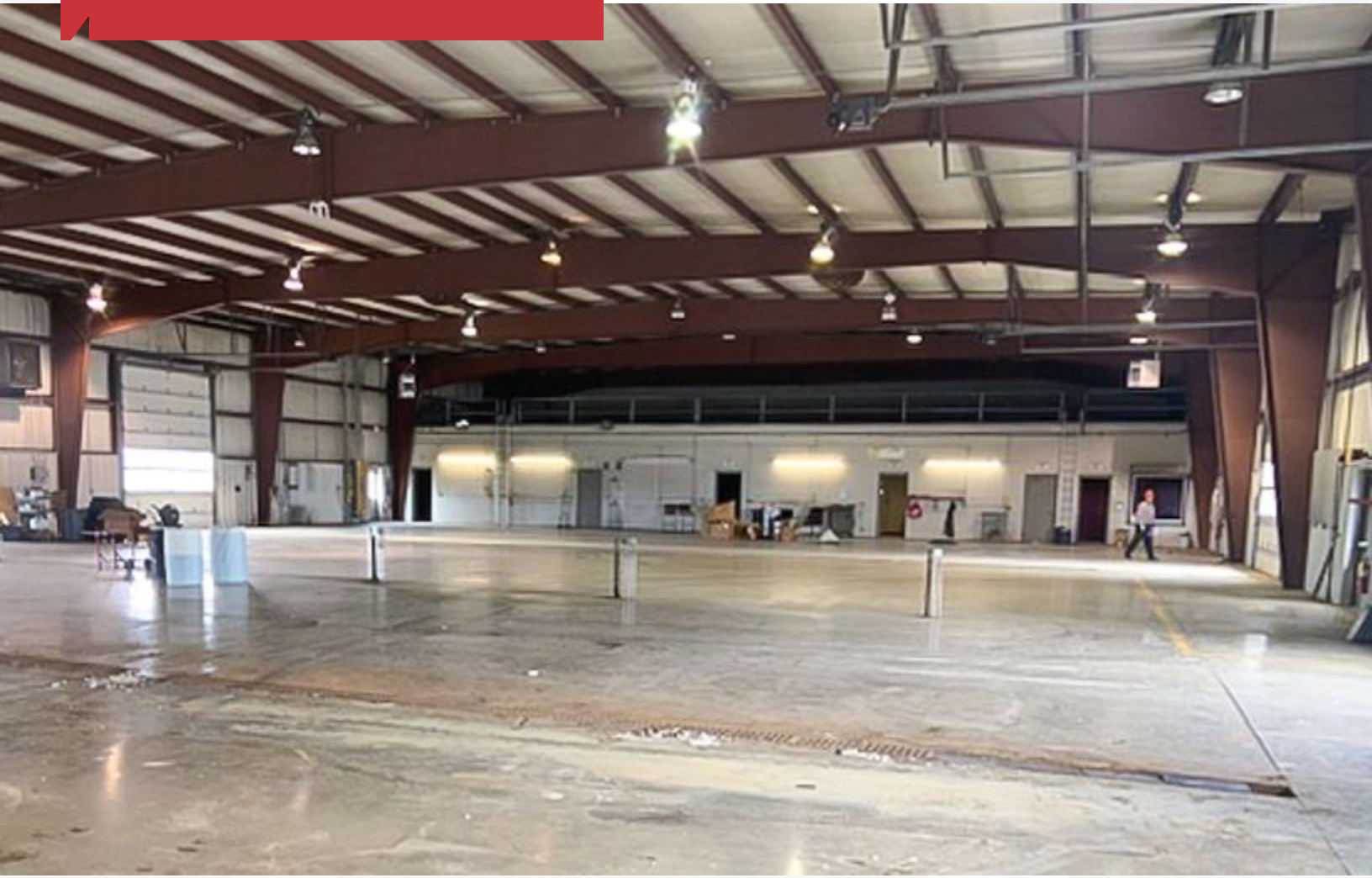


<b>Restrooms:</b>	Four
<b>Delivery Doors:</b>	Six
<b>No. of Floors:</b>	One
<b>Sprinklers:</b>	Y
<b>Security System:</b>	Fenced, Gated

# Additional Photos



## Additional Photos



# Aerial Map



SITE

Google

Imagery ©2020 Maxar Technologies, State of Ohio / OSIP, USDA Farm Service Agency

**NAI**Harmon Group

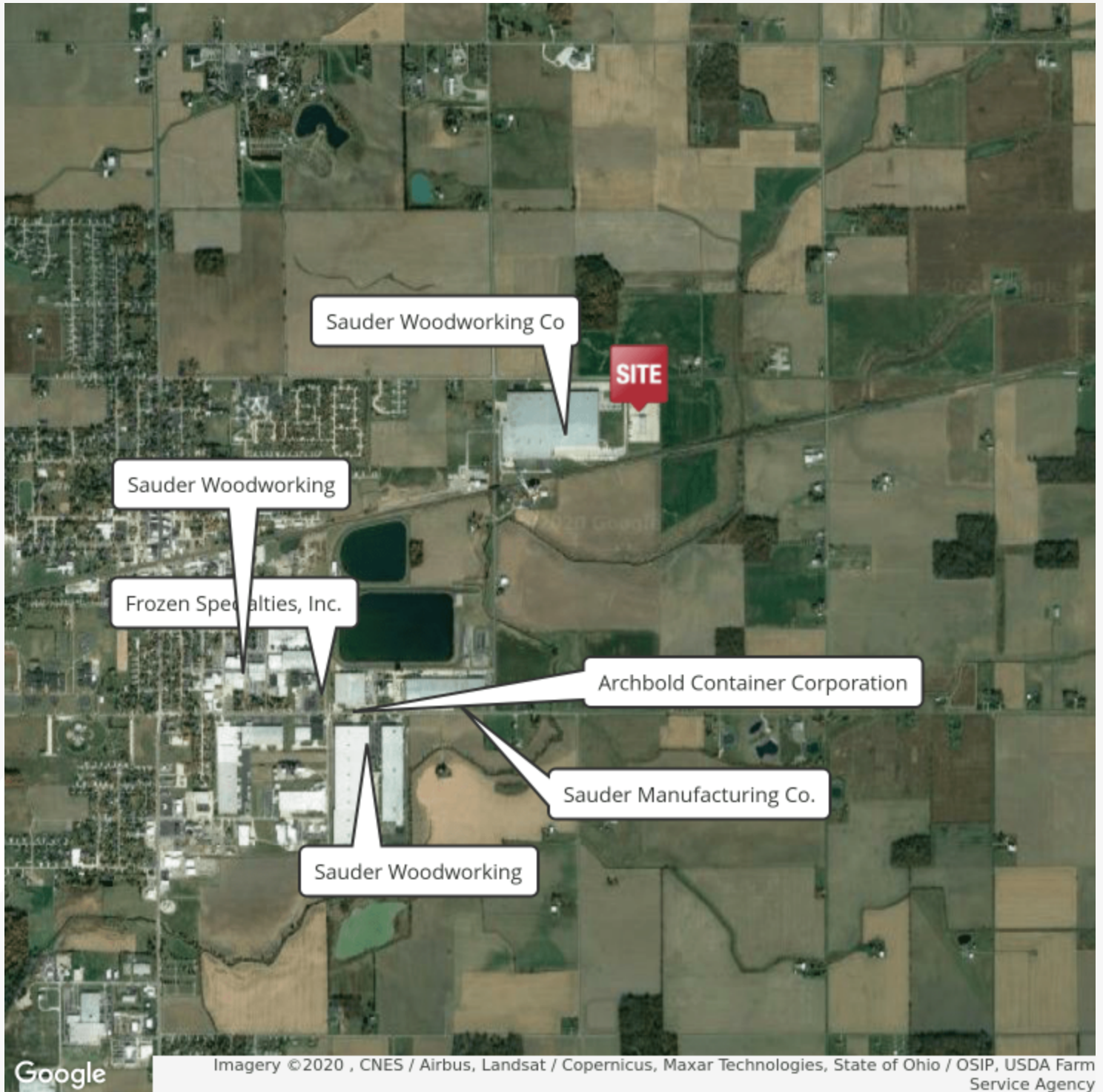
NO WARRANTY OR REPRESENTATION, EXPRESS OR IMPLIED, IS MADE AS TO THE ACCURACY OF THE INFORMATION CONTAINED HEREIN, AND THE SAME IS SUBMITTED SUBJECT TO ERRORS, OMISSIONS, CHANGE OF PRICE, RENTAL OR OTHER CONDITIONS, PRIOR SALE, LEASE OR FINANCING, OR WITHDRAWAL WITHOUT NOTICE, AND OF ANY SPECIAL LISTING CONDITIONS IMPOSED BY OUR PRINCIPALS NO WARRANTIES OR REPRESENTATIONS ARE MADE AS TO THE CONDITION OF THE PROPERTY OF ANY HAZARDS CONTAINED THEREIN ARE TO BE IMPLIED.

4427 Talmadge Rd, Suite A  
Toledo, OH 43623  
419 960 4410 tel  
[naiharmon.com](http://naiharmon.com)



For Sale

# Former Ryder Truck Property



# Location Maps



# Location Maps





## Mark Baringer

Senior Advisor

419.960.4410 x317 tel

419.438.5839 cell

419.930.8781 fax

mbaringer@naiharmon.com

### Memberships & Affiliations

Northwest Ohio REALTORS® (NWOR)  
Ohio Association of REALTORS® (OAR)  
National Association of REALTORS® (NAR)  
International Council of Shopping Centers (ICSC)  
Lifewise Academy | Leadership Council Member

### Education

The University of Toledo, Majoring in Real Estate

### Professional Background

Mark joined our team with over 30 years of commercial and investment experience. Prior to his real estate involvement, he worked in the banking and appraisal field for nine years. Mark served in Real Estate Administration for SunTrust Bank in Florida, working on valuation and special projects on a local, regional and national level. He also worked for an independent MAI firm in Northwest Ohio, and at one point owning and operating an appraisal firm. Mark was an original board member of Children's Lantern, a faith-based 501c foundation helping homeless children. Mark is currently on the leadership team of Lifewise Academy in Defiance, Ohio.

As a Senior Investment Advisor with NAI Harmon Group in Toledo, Mark specializes in the sale and leasing of properties including industrial, shopping centers, multifamily, office, and single tenant NNN properties. His experience includes tax-deferred exchanges, medical offices, industrial and land development, and corporate sale/leasebacks. His clients have included national real estate investment trusts, corporations, partnerships, banks, high net worth individuals, and regional and national investors. Mark also serves the counties outlying Toledo, including the communities of Defiance, Lima, and Findlay; across all property types.

# Ryder Truck Property

1101 East Lutz Rd  
Archbold, Ohio 43502

The information contained in the following Investment Summary is proprietary and strictly confidential. It is intended to be reviewed only by the party receiving it from NAI Harmon Group Investment Real Estate Brokerage and should not be made available to any other person or entity without the written consent of Broker. This Investment Summary has been prepared to provide summary, unverified information to prospective purchasers, and to establish only a preliminary level of interest in the subject property. The information contained herein is not a substitute for a thorough due diligence investigation. Broker has not made any investigation, and makes no warranty or representation, with respect to the income or expenses for the subject property, the future projected financial performance of the property, the size and square footage of the property and improvements, the presence or absence of contaminating substances, PCB's or asbestos, the compliance with State and Federal regulations, the physical condition of improvements thereon, or the financial condition or business prospects of any tenant, or any tenant's plans or intentions to continue occupancy of the subject property.

The information contained in the Marketing Brochure has been obtained from sources we believe to be reliable; however, Broker has not verified, and will not verify, any of the information contained herein, nor has Broker conducted any investigation regarding these matters and makes no warranty or representation whatsoever regarding the accuracy or completeness of the information provided. All potential purchasers must take appropriate measures to verify all of the information set forth herein.

For more information

**Mark Baringer**

O: 419 960 4410 x317

[mbaringer@naiharmon.com](mailto:mbaringer@naiharmon.com)

