



LEGACY POINTE

69,856 SF CLASS A

OFFICE

SPACE

10856 REED HARTMAN HWY



KEY FEATURES

- 262 parking spaces (expandable)
- Ceiling height: 10'
- Signage: building and monument
- Elevators: 2
- Outdoor patios: 2
- Year built: 2012

RENTABLE SF MEASUREMENTS:

FLOOR 2: 26,748 SF

FLOOR 1: 27,106 SF

FLOOR LL: 16,002 SF

TOTAL: 69,856





LANDMARK

HEADQUARTERS BUILDING

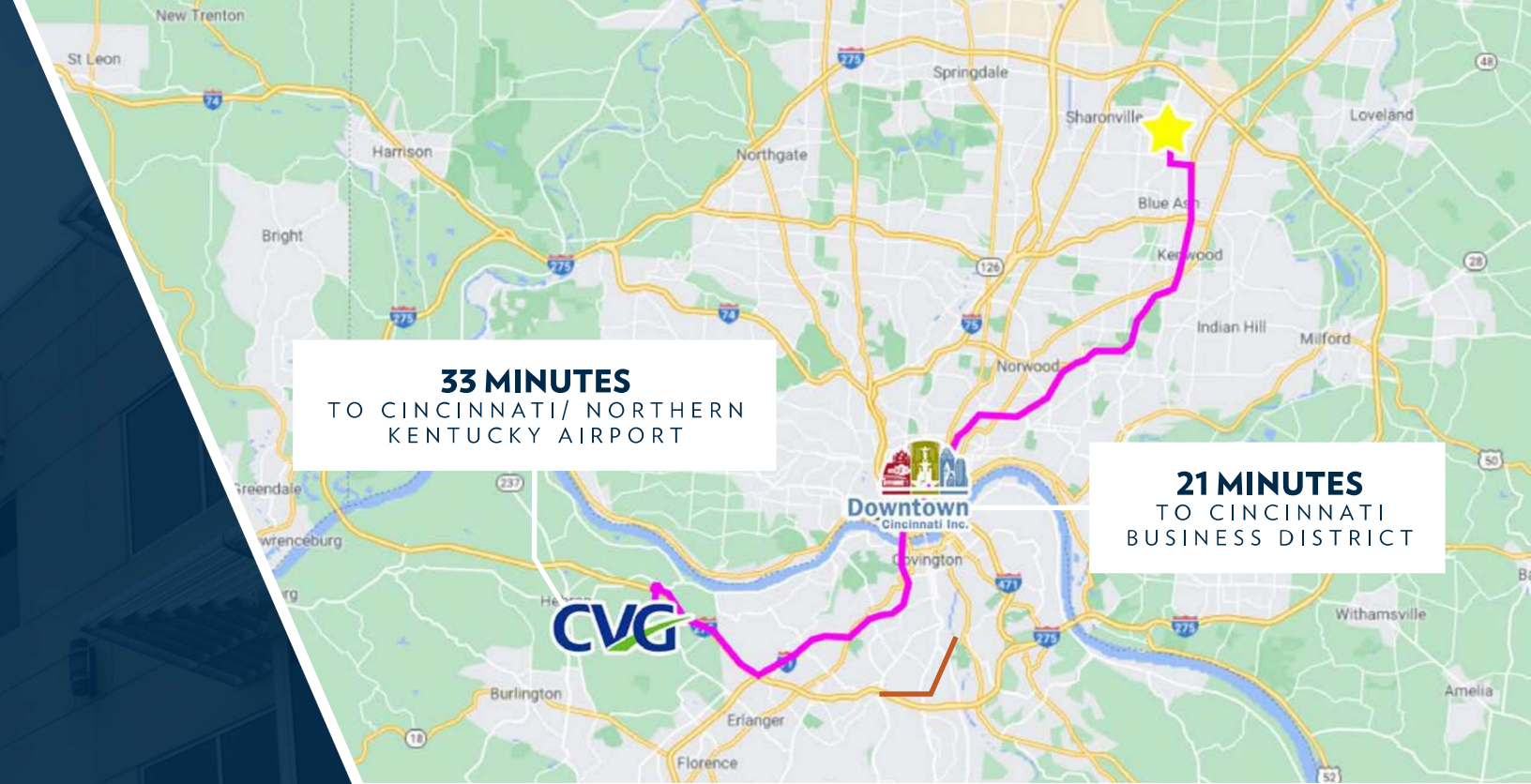
Legacy Pointe offers the unique opportunity for prominent Reed Hartman signage in a headquarters-quality building in the heart of Blue Ash. With convenient access to major interstates and surrounded by amenities, enjoy high-profile Class A office space in a campus setting 1.5 miles from world-class Summit Park.



[VIEW DRONE VIDEO](#)



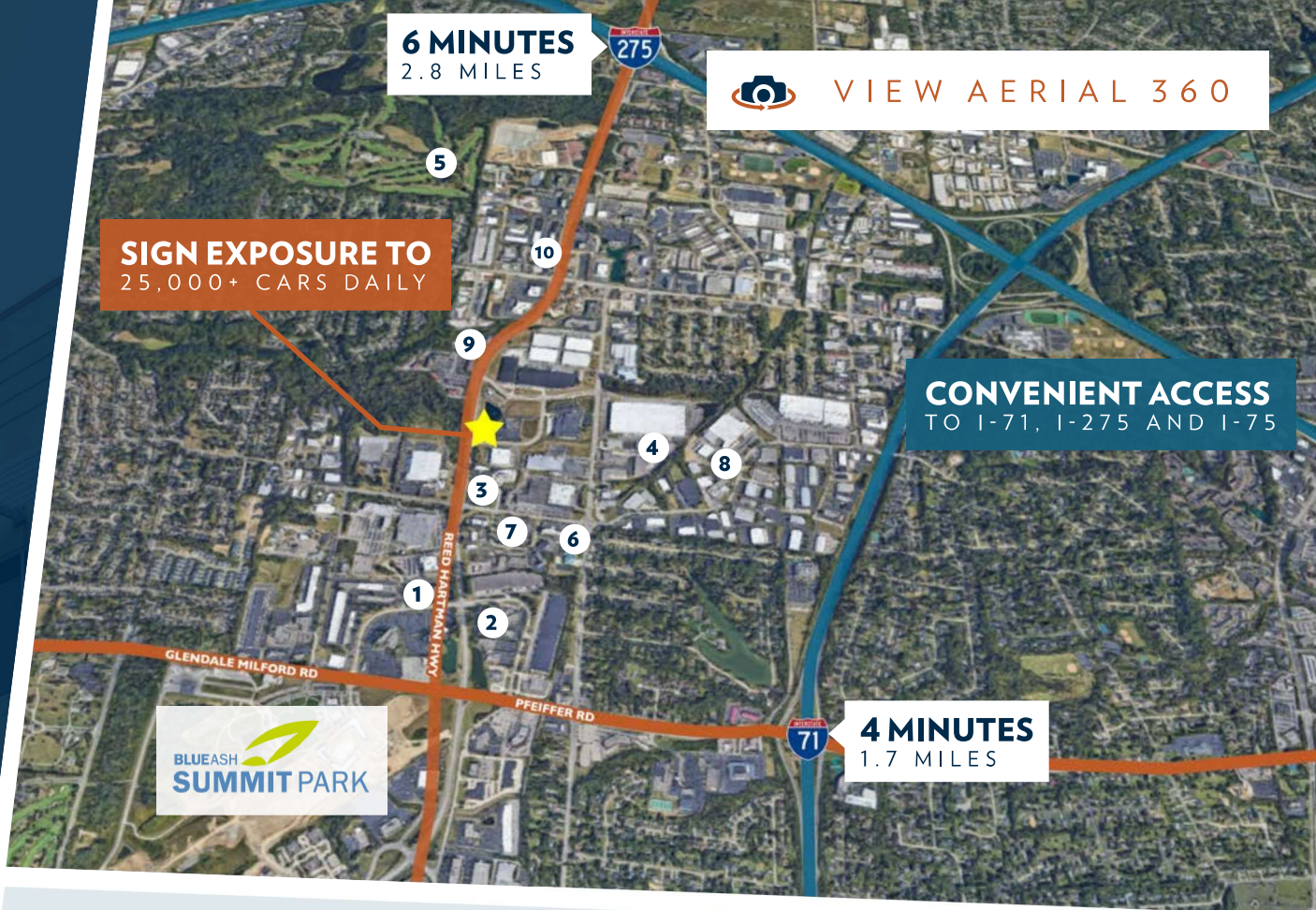
[VIEW AERIAL 360](#)



PRIME LOCATION IN BLUE ASH

Blue Ash is the premier suburban office submarket in Greater Cincinnati, with 50 of the Fortune 500 companies having a presence within the City of Blue Ash. Top-ranked schools, superior parks and recreation, and a thriving business community make Blue Ash the ideal place to live, work and visit.





LOCAL AMENITIES

- 1 Embassy Suites by Hilton
- 2 Courtyard by Marriott
- 3 Extended Stay America
- 4 Climb Time of Blueash
- 5 Sharon Woods Golf Course
- 6 Sammy's Craft Burgers and Beers
- 7 Apple Spice Junction Catering
- 8 Fretboard Brewing Company
- 9 Panera Bread
- 10 Chipotle & Starbucks

1.2 MILES TO
BLUEASH SUMMIT PARK

Legacy Pointe is located minutes to one of the region's most beautiful settings. Summit Park is a development offering a space where visitors enjoy interactive programming, unique learning opportunities, and year-round experiences.

[LEARN MORE](#)



WALKOUT TO LARGE TERRACES ON TWO FLOORS
LAKEFRONT VIEWS FROM EVERY FLOOR





TAKE A 360°
VIRTUAL
TOUR



SPACIOUS FEEL

WITH 10' CEILINGS AND 2-STORY LOBBY





TAKE A 360°
VIRTUAL TOUR



SHARED DINING/LOUNGE AREA WITH AUTOMATED PANTRY SERVICE





MOVE-IN CONDITION
PREMIUM QUALITY DESIGN
AND CONSTRUCTION





PLENTIFUL PARKING
WITH EXPANSION POTENTIAL



FLOOR 1



TAKE A 360°
VIRTUAL TOUR



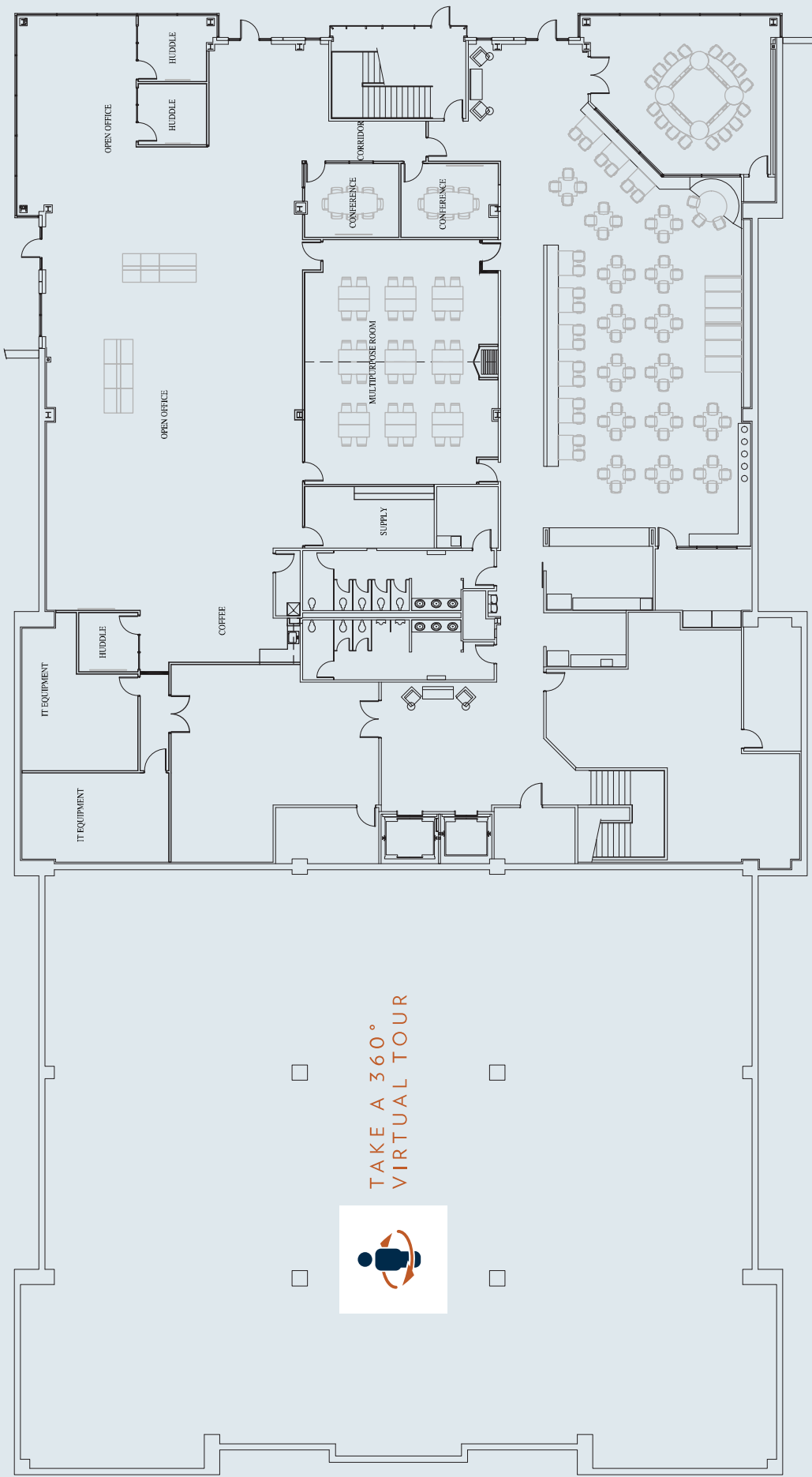
FRONT ENTRANCE

FLOOR 2



FRONT ENTRANCE

LOWER LEVEL



TAKE A 360°
VIRTUAL TOUR

FRONT ENTRANCE

LEGACY POINTE

10856 REED HARTMAN HWY



MARC SEBENS

(513) 225-1112

marc.sebens@sqftcommercial.com