



Commercial Garage Property For Sale

Cherry's Tire & Service

1945 E Front Street, Logan, OH 43138



presented by:

Ajay Pandya

614.209.2261

ajay.pandya@e-merge.com

e-Merge Real Estate Commercial

12910 Stonecreek Dr
Pickerington, OH 43147

614.678.5505

e-merge realestatecommercial.com

Commercial Garage Property For Sale

Cherry's Tire & Service

1945 E Front Street, Logan, OH 43138



OFFERING SUMMARY

Sale Price:	\$399,000
Lot Size:	1.75 Acres
Year Built:	1978
Building Size:	2,874 SF
Zoning:	455 - Commercial Garages
Price / SF:	\$138.83

PROPERTY OVERVIEW

Incredible commercial property with amazing upside for sale in a PRIME location. This automotive shop has been in business for 50+ years and is a staple in the community. The property consists of 3 structures. a 14x20 pole barn, a 66x24 mobile home that is income producing approx \$6,600/year and a 20x14 garage with several semi trailers for additional storage that can either be removed or convey with the property. The opportunity to buy the REAL ESTATE and start your own business or redevelop opportunities are endless. Don't miss out on this opportunity. Contact us today!

presented by:

Ajay Pandya

614.209.2261

ajay.pandya@e-merge.com

e-Merge Real Estate Commercial

12910 Stonecreek Dr, Pickerington, OH 43147
614.678.5505 | e-merge realestatecommercial.com

Commercial Garage Property For Sale

Cherry's Tire & Service

1945 E Front Street, Logan, OH 43138



presented by:

Ajay Pandya

614.209.2261

ajay.pandya@e-merge.com

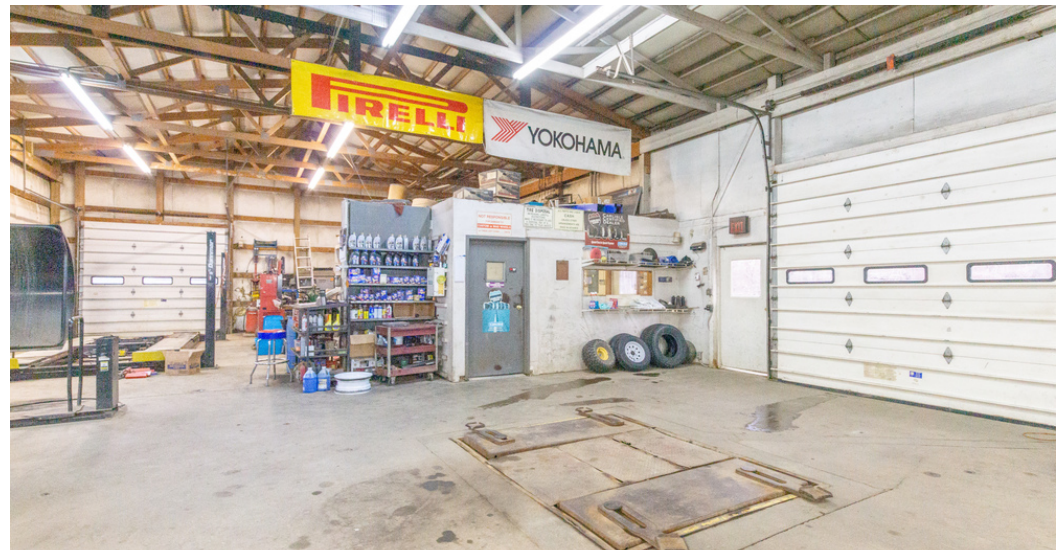
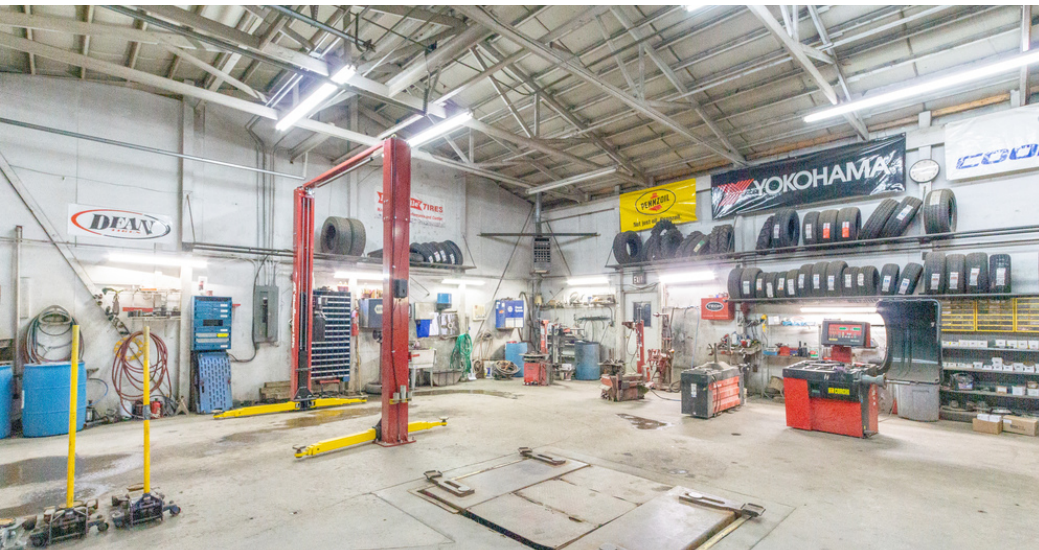
e-Merge Real Estate Commercial

12910 Stonecreek Dr, Pickerington, OH 43147
614.678.5505 | e-merge realestatecommercial.com

Commercial Garage Property For Sale

Cherry's Tire & Service

1945 E Front Street, Logan, OH 43138



presented by:

Ajay Pandya

614.209.2261

ajay.pandya@e-merge.com

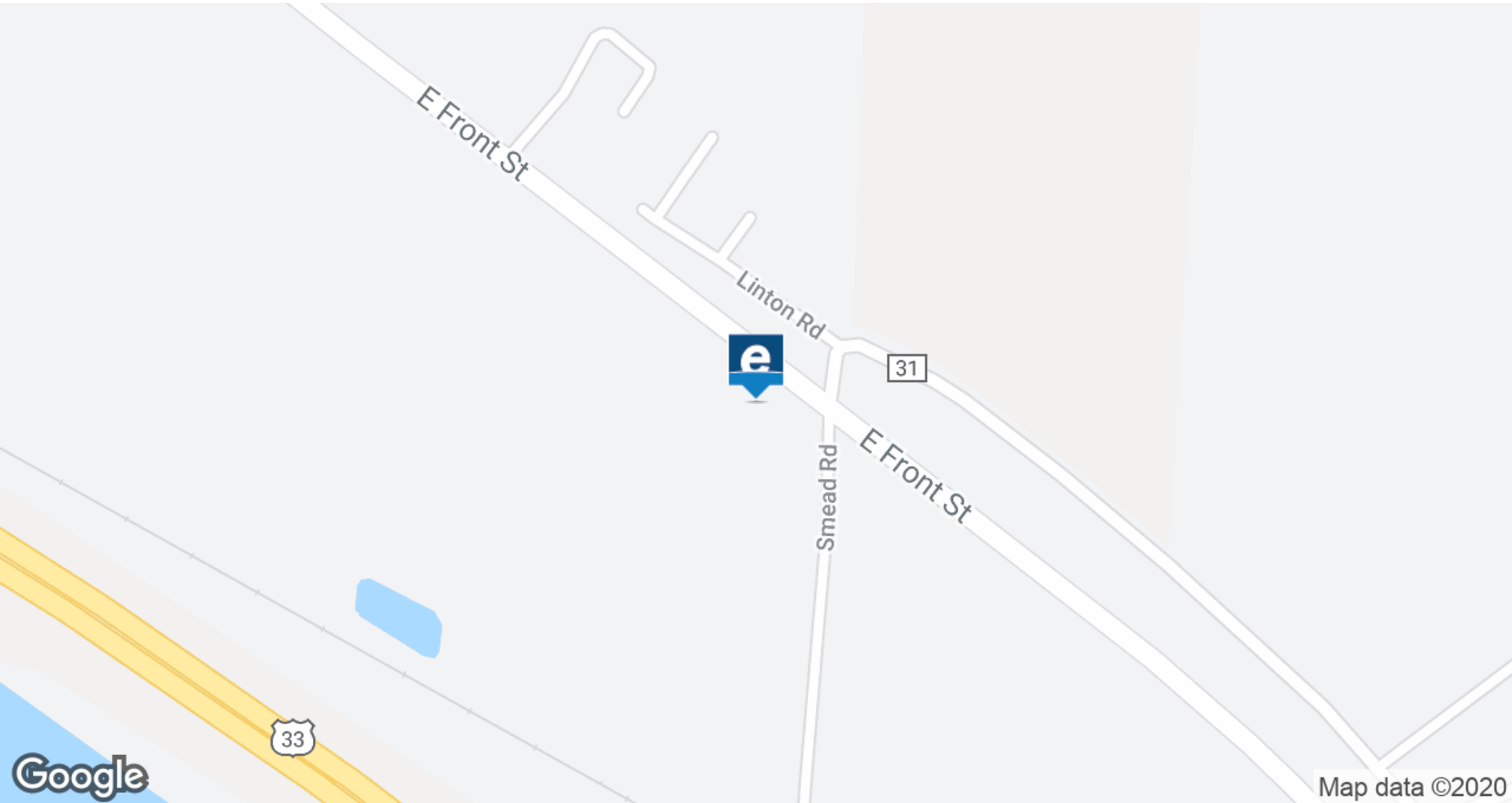
e-Merge Real Estate Commercial

12910 Stonecreek Dr, Pickerington, OH 43147
614.678.5505 | e-merge realestatecommercial.com

Commercial Garage Property For Sale

Cherry's Tire & Service

1945 E Front Street, Logan, OH 43138



presented by:

Ajay Pandya

614.209.2261

ajay.pandya@e-merge.com

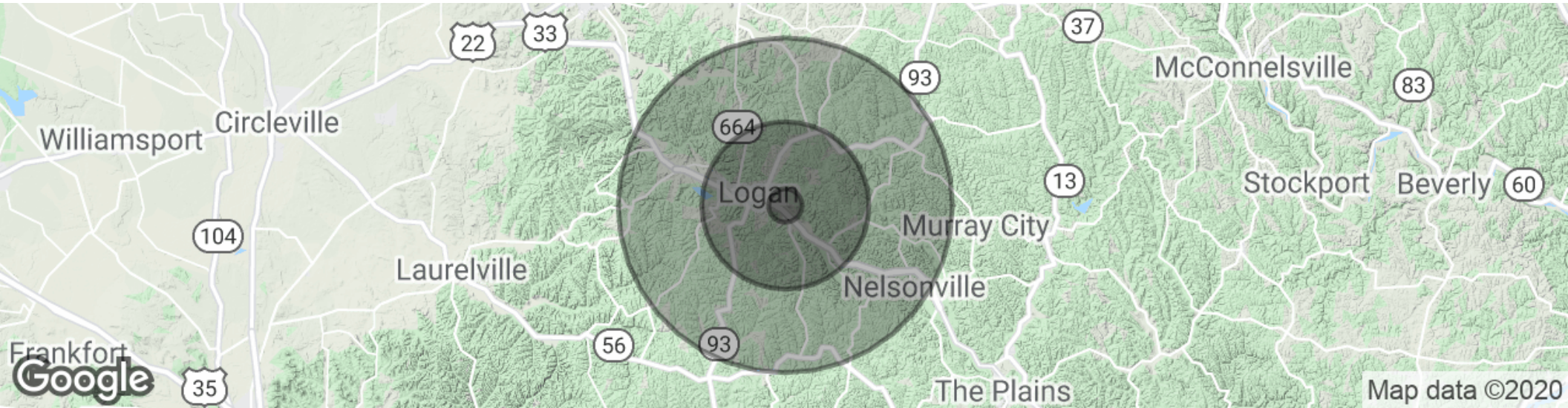
e-Merge Real Estate Commercial

12910 Stonecreek Dr, Pickerington, OH 43147
614.678.5505 | e-mergecommercial.com

Commercial Garage Property For Sale

Cherry's Tire & Service

1945 E Front Street, Logan, OH 43138



POPULATION	1 MILE	5 MILES	10 MILES
Total population	650	13,138	28,560
Median age	37.5	36.6	38.7
Median age (Male)	36.8	35.7	38.1
Median age (Female)	37.9	37.1	38.8

HOUSEHOLDS & INCOME	1 MILE	5 MILES	10 MILES
Total households	250	5,246	11,318
# of persons per HH	2.6	2.5	2.5
Average HH income	\$44,609	\$43,946	\$45,261
Average house value		\$149,382	\$144,650

* Demographic data derived from 2010 US Census

presented by:

Ajay Pandya
614.209.2261
ajay.pandya@e-merge.com

e-Merge Real Estate Commercial
12910 Stonecreek Dr, Pickerington, OH 43147
614.678.5505 | e-merge realestatecommercial.com