



**COLDWELL  
BANKER  
COMMERCIAL**

**EMMCO REALTY GROUP**

**FOR LEASE**

EMMCOREALTYGROUP.COM

## **MENTOR TOWNE CENTRE**

Price Upon Request

9700 Mentor Avenue  
Mentor, OH 44060

AVAILABLE SPACE  
1,495 - 3,995 SF

### **AREA**

- Over 100,000 people within 3 miles with an average household income exceeding \$78,900.
- Convenient to I-90 and SR 2 via SR 44 and SR 615, and serving Mentor, Concord, Painesville and the surrounding areas.
- Meijer's now open to the east on Mentor Avenue!
- Retailers in the Immediate Area: Target, Lowe's, Kohl's, Dick's Sporting Goods, Gordman's, and ULTA. Restaurants in the immediate Area: Panera Bread, Chick Fil A, Dunkin Donuts



### **OFFICE**

Sherrie Mendenhall  
216 292 3700 x17  
sherrie@emmcorealtygroup.com

Jeffrey Soclof, CCIM  
216 292 3700  
jeffrey@emmcorealtygroup.com

©2021 Coldwell Banker. All Rights Reserved. Coldwell Banker and the Coldwell Banker Commercial logos are trademarks of Coldwell Banker Real Estate LLC. The Coldwell Banker® System is comprised of company owned offices which are owned by a subsidiary of Realogy Brokerage Group LLC and franchised offices which are independently owned and operated. The Coldwell Banker System fully supports the principles of the Equal Opportunity Act.

**COLDWELL BANKER COMMERCIAL**  
**EMMCO REALTY GROUP**  
3681 S. Green Road, Suite 201, Beachwood, OH 44122  
216.292.3700



# MENTOR TOWNE CENTRE

9700 Mentor Avenue , Mentor, OH 44060



### PROPERTY DESCRIPTION

Mentor Towne Centre is conveniently located in a dense, developed retail market. It offers competitive lease rates with available spaces strategically located next to Bed Bath & Beyond and Lumber Liquidators!

### PROPERTY HIGHLIGHTS

- Anchored By Bed Bath & Beyond
- National Tenants include Lumber Liquidators, Hallmark, Arby's, Massage Envy
- Great Location for Home Furnishings, HomeAccessories, Remodeling and Repair
- Directly across from Target and Chick Fil A. Next to Lowe's Home Improvement
- Signalized Intersection
- Full-service traffic signal @ entrance to Towne Centre and Target with other points of ingress and egress.

### SPACES

### SPACE SIZE

5	2,500 SF
15	1,495 SF

### DEMOGRAPHICS

### 1 MILE

### 5 MILES

### 10 MILES

Total Households	2,764	39,671	89,257
Total Population	6,801	100,613	222,031
Average HH Income	\$81,704	\$72,869	\$72,402
Total Businesses	400	4,011	7,894
Total Employees	4,303	58,227	211,689

EMMCOREALTYGROUP.COM

Sherrie Mendenhall  
 216 292 3700 x17  
 sherrie@emmcorealtygroup.com

Jeffrey Soclof, CCIM  
 216 292 3700  
 jeffrey@emmcorealtygroup.com



**COLDWELL  
 BANKER  
 COMMERCIAL**

EMMCO REALTY GROUP



# MENTOR TOWNE CENTRE

9700 Mentor Avenue , Mentor, OH 44060

LEASE



EMMCOREALTYGROUP.COM

Sherrie Mendenhall  
 216 292 3700 x17  
 sherrie@emmcorgroup.com

Jeffrey Soclof, CCIM  
 216 292 3700  
 jeffrey@emmcorgroup.com



**COLDWELL  
 BANKER  
 COMMERCIAL**

EMMCO REALTY GROUP



## MENTOR TOWNE CENTRE

9700 Mentor Avenue , Mentor, OH 44060

LEASE

SUITE	TENANT	SIZE (SF)	LEASE TYPE	DESCRIPTION
1	Bed Bath & Beyond	25,020 SF	NNN	-
2	The Beauty and the Beard Salon & Spa	2,193 SF	NNN	-
3	CUBE Workspace	1,425 SF	NNN	-
4	Window Nation	1,664 SF	NNN	-
5	Available	2,500 SF	NNN	Wide Open Showroom 2,370 square feet (30' x 79')
6	Lumber Liquidators	7,200 SF	NNN	-
7	Ember's Custom Fireplace	3,500 SF	NNN	-
8	Avenue Accents	1,500 SF	NNN	-
9	Page's Hallmark	2,500 SF	NNN	-
10	AVAILABLE - Restaurant Space	2,500 SF	NNN	-
11	Arby's	2,000 SF	NNN	-
12	Moe's Southwest Grill	3,054 SF	NNN	-
13	Massage Envy	3,011 SF	NNN	-
14	Dave's Cosmic Sub's	1,465 SF	NNN	-
15	Available	1,495 SF	NNN	-

EMMCOREALTYGROUP.COM

Sherrie Mendenhall  
 216 292 3700 x17  
 sherrie@emmcorealtygroup.com

Jeffrey Soclof, CCIM  
 216 292 3700  
 jeffrey@emmcorealtygroup.com



**COLDWELL  
 BANKER  
 COMMERCIAL**

EMMCO REALTY GROUP



# MENTOR TOWNE CENTRE

9700 Mentor Avenue , Mentor, OH 44060

LEASE



EMMCOREALTYGROUP.COM

Sherrie Mendenhall  
216 292 3700 x17  
sherrie@emmc Realtygroup.com

Jeffrey Soclof, CCIM  
216 292 3700  
jeffrey@emmc Realtygroup.com



**COLDWELL  
BANKER  
COMMERCIAL**

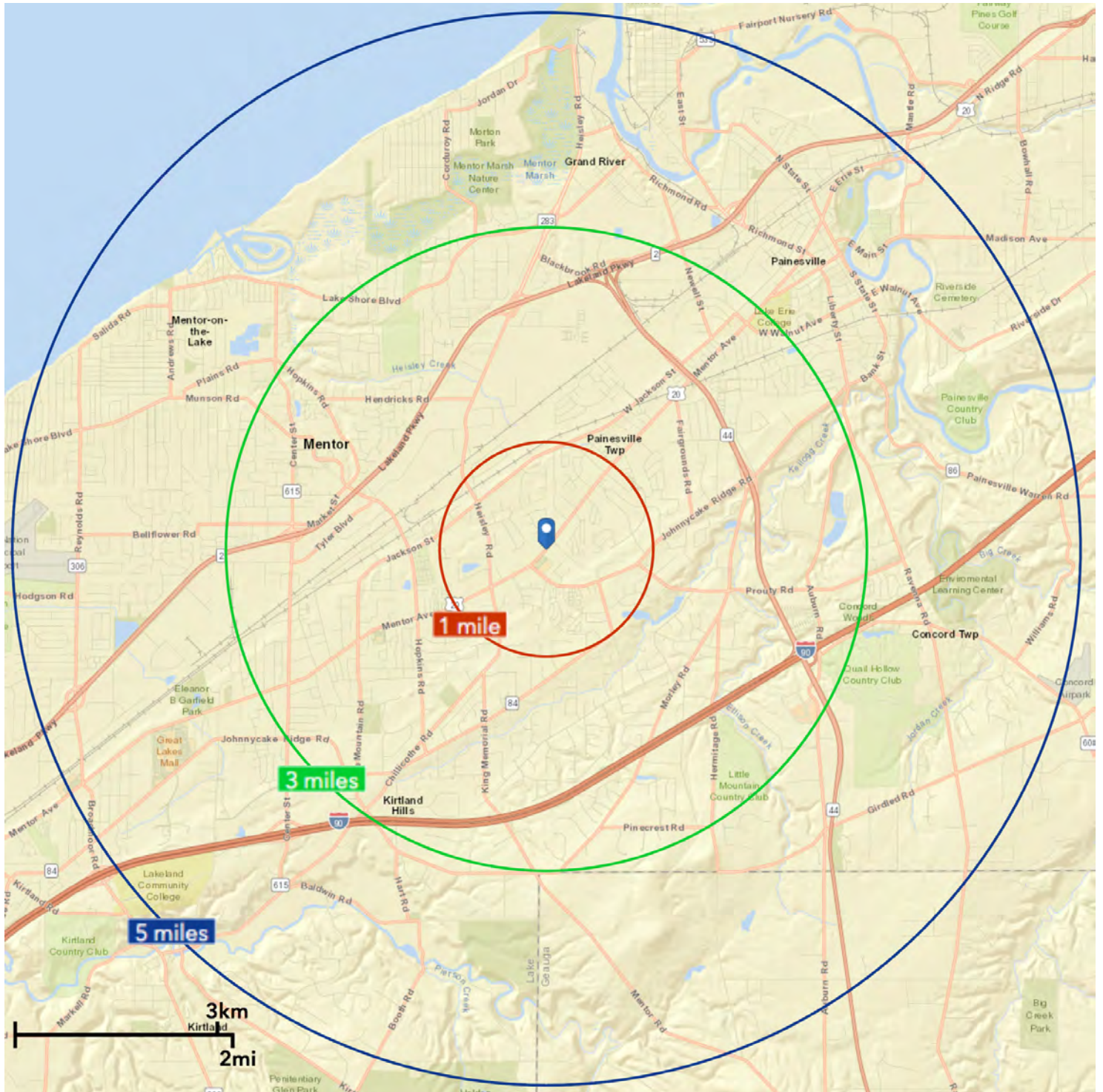
EMMCO REALTY GROUP



# RADIUS: 1, 3, 5 MILES

9700 Mentor Avenue , Mentor, OH 44060

LEASE



EMMCOREALTYGROUP.COM

Sherrie Mendenhall  
 216 292 3700 x17  
 sherrie@emmcorealtygroup.com

Jeffrey Soclof, CCIM  
 216 292 3700  
 jeffrey@emmcorealtygroup.com



**COLDWELL  
 BANKER  
 COMMERCIAL**

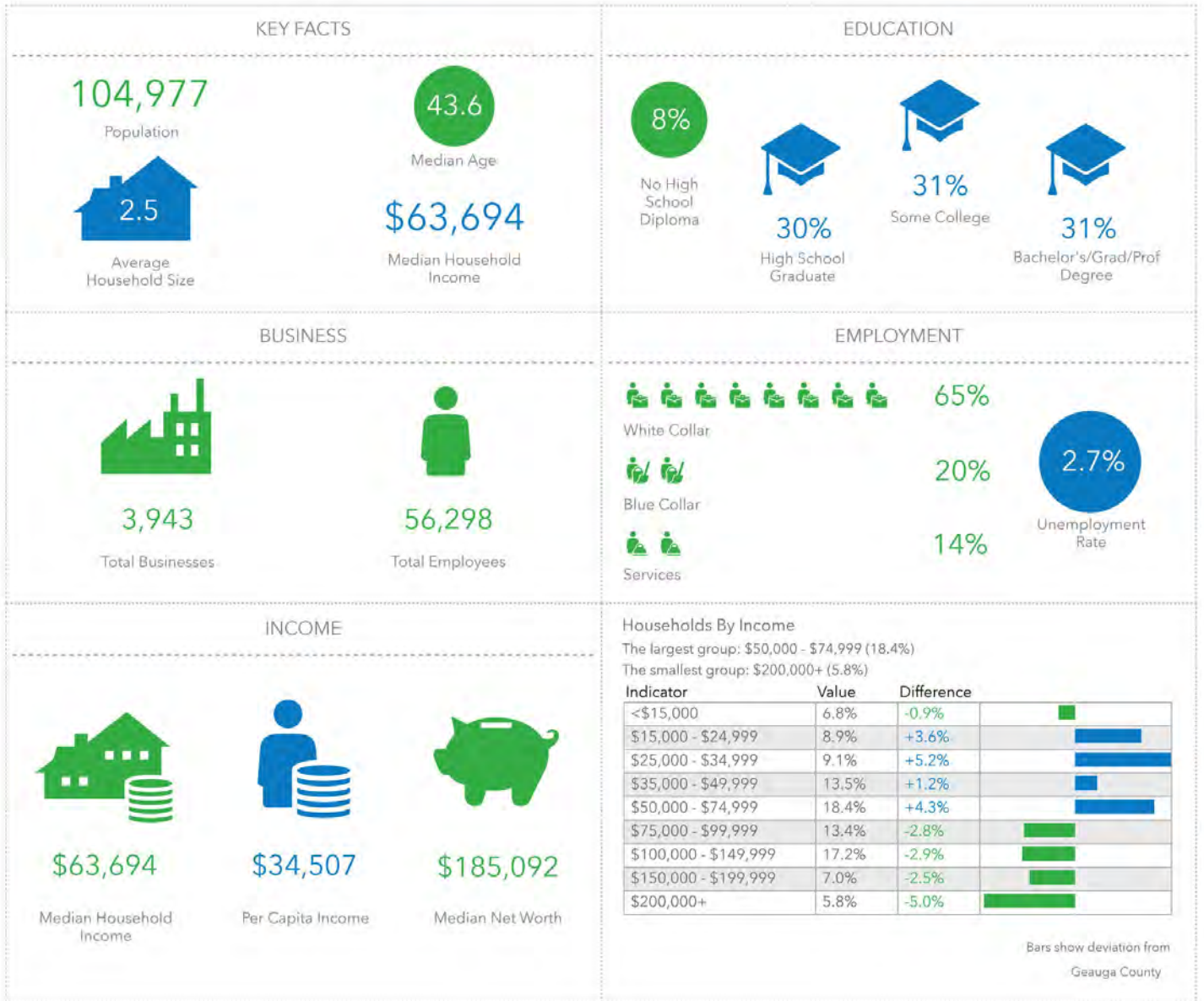
EMMCO REALTY GROUP



# DEMOGRAPHICS: 5 MILES

9700 Mentor Avenue , Mentor, OH 44060

LEASE



EMMCOREALTYGROUP.COM

Sherrie Mendenhall  
216 292 3700 x17  
sherrie@emmcorgroup.com

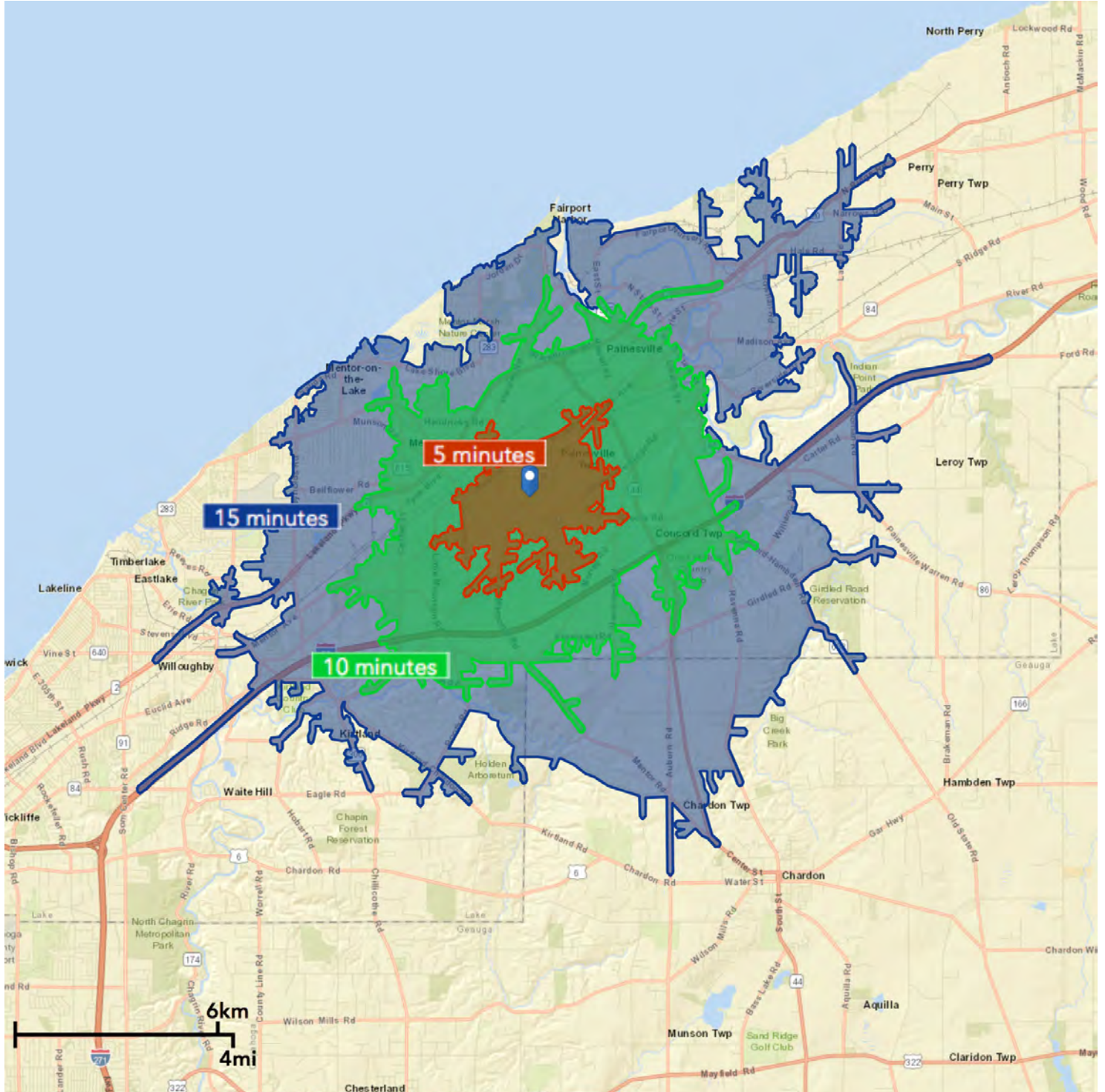
Jeffrey Soclof, CCIM  
216 292 3700  
jeffrey@emmcorgroup.com



# DRIVE TIMES: 5, 10, 15 MINUTES

9700 Mentor Avenue , Mentor, OH 44060

LEASE



EMMCOREALTYGROUP.COM

Sherrie Mendenhall  
 216 292 3700 x17  
 sherrie@emmcorealtygroup.com

Jeffrey Soclof, CCIM  
 216 292 3700  
 jeffrey@emmcorealtygroup.com



**COLDWELL  
 BANKER  
 COMMERCIAL**

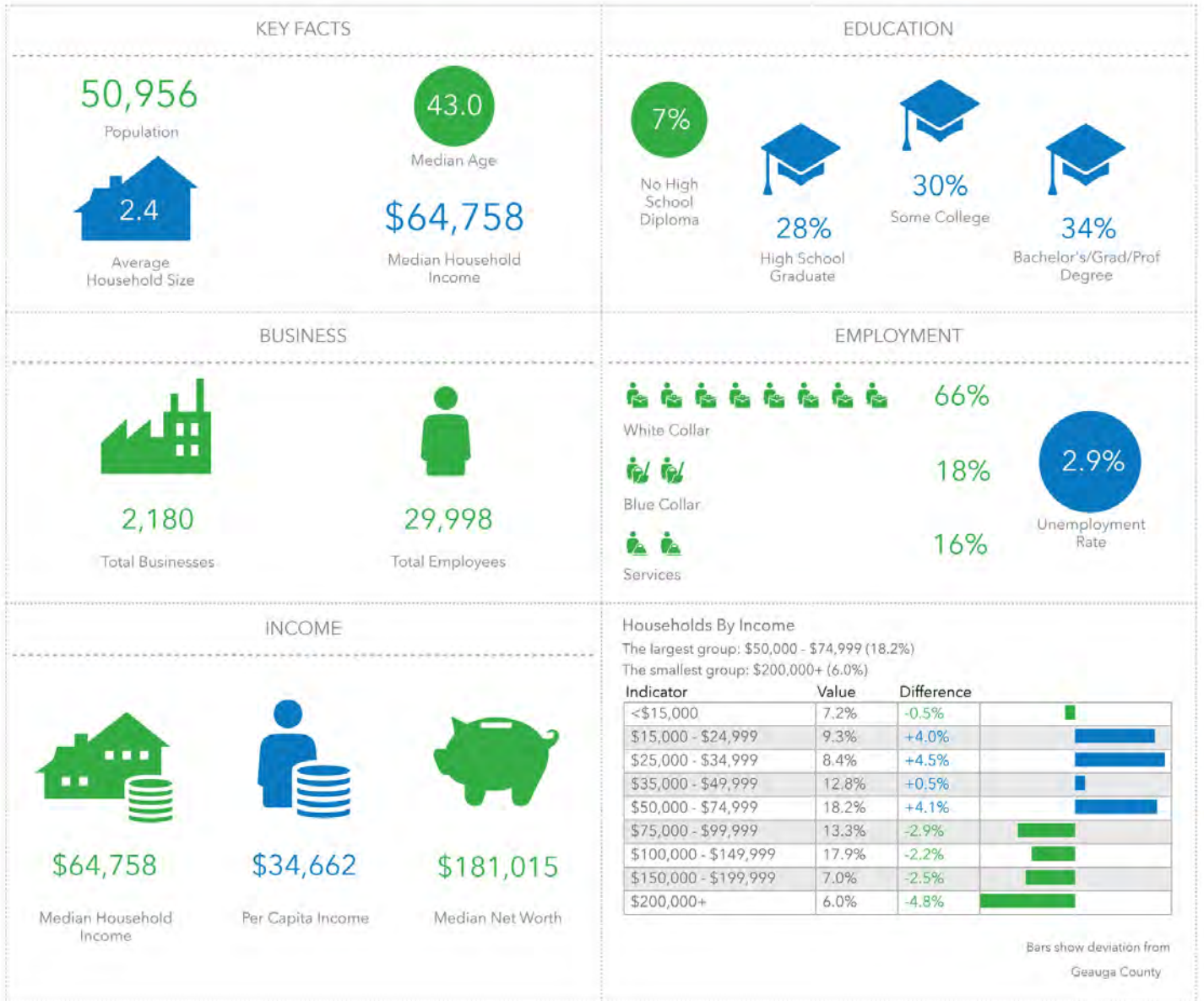
EMMCO REALTY GROUP





# DRIVE TIME DEMOGRAPHICS: 10 MINUTES

9700 Mentor Avenue , Mentor, OH 44060



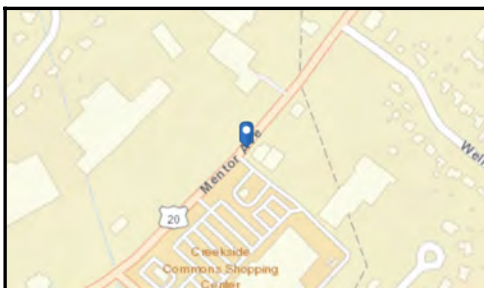
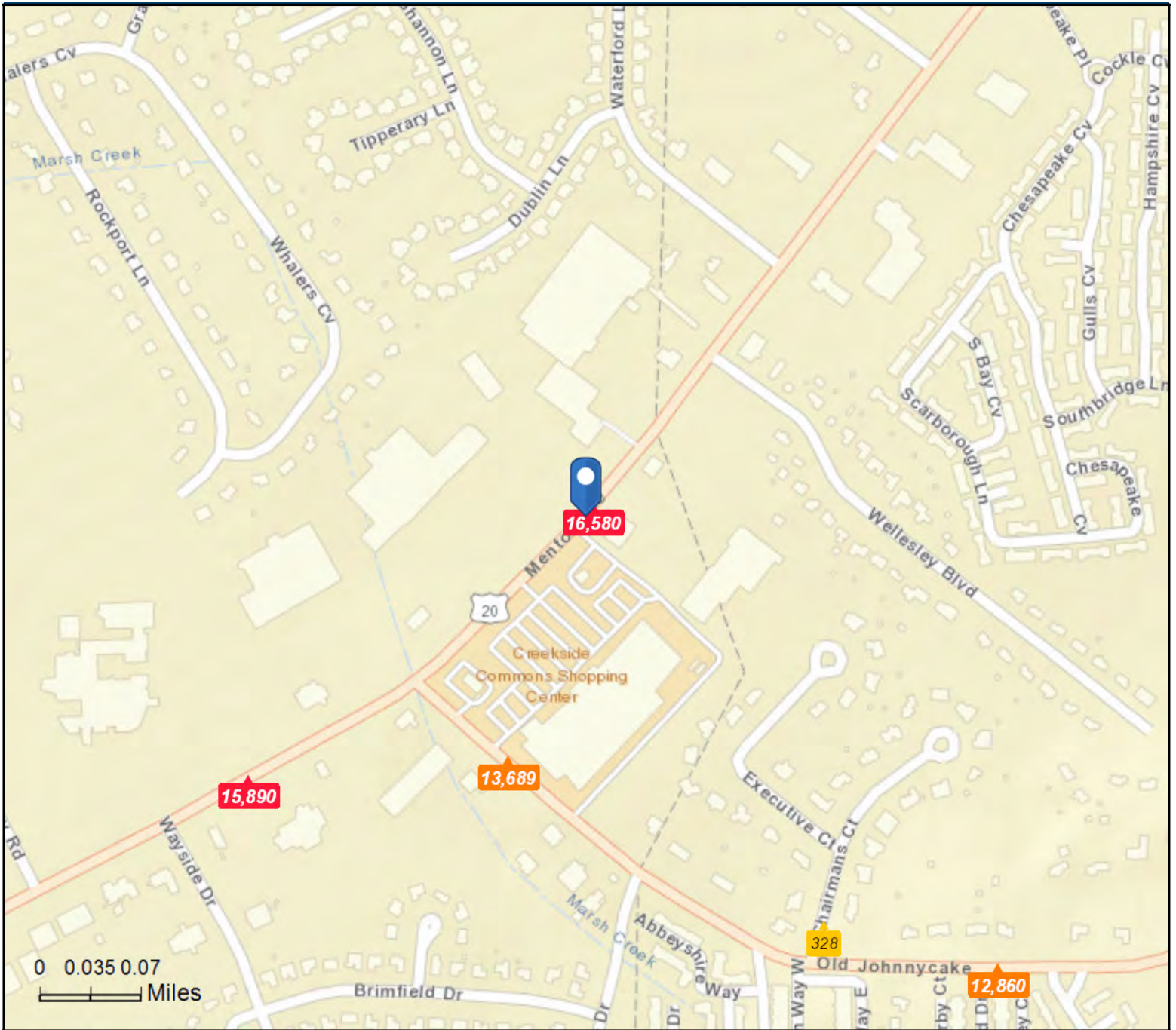
EMMCOREALTYGROUP.COM

Sherrie Mendenhall  
216 292 3700 x17  
sherrie@emmc Realtygroup.com

Jeffrey Soclof, CCIM  
216 292 3700  
jeffrey@emmc Realtygroup.com

9662 Mentor Ave, Mentor, Ohio, 44060  
 Drive Time: 5, 10, 15 minute radii

Prepared by Esri  
 Latitude: 41.68408  
 Longitude: -81.29393



- Average Daily Traffic Volume**
- ▲ Up to 6,000 vehicles per day
  - ▲ 6,001 - 15,000
  - ▲ 15,001 - 30,000
  - ▲ 30,001 - 50,000
  - ▲ 50,001 - 100,000
  - ▲ More than 100,000 per day



Source: ©2019 Kalibrate Technologies (Q1 2019).