

RESTAURANT 365

AVAILABLE FOR SALE

2019 O Street Sacramento CA 95811

FOR MORE INFORMATION

Daniel Mueller
Executive Director

916.704.9341

915 Howe Ave

Sacramento, Ca 95825

dmueller@muellercommercial.com

Cal BRE# 01829919



Century21
COMMERCIAL

M&M AND ASSOCIATES



SALE PRICE \$1,495,000.00

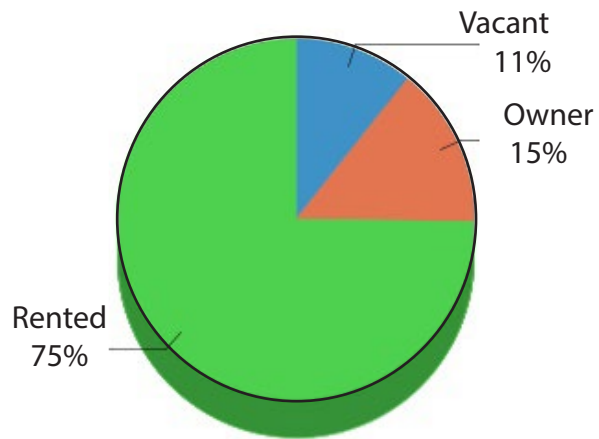
HIGHLIGHTS

- 6,200 SF Available for Sale | Lot Size 0.15 AC
- Parcel number 007-0245-015
- Zoned - C2

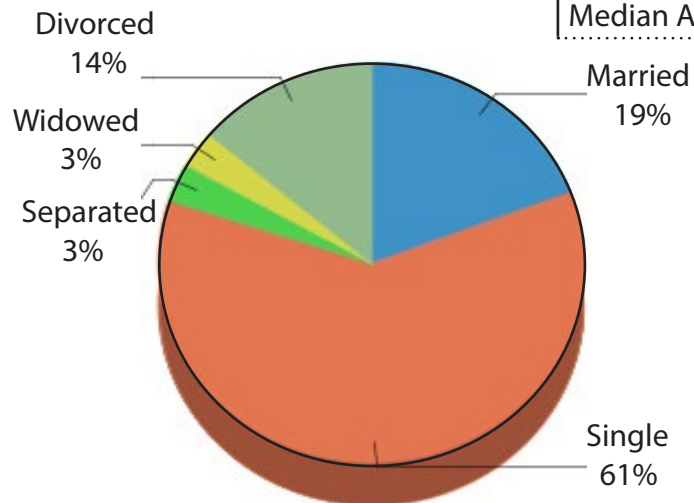
THE PROPERTY



Demographics



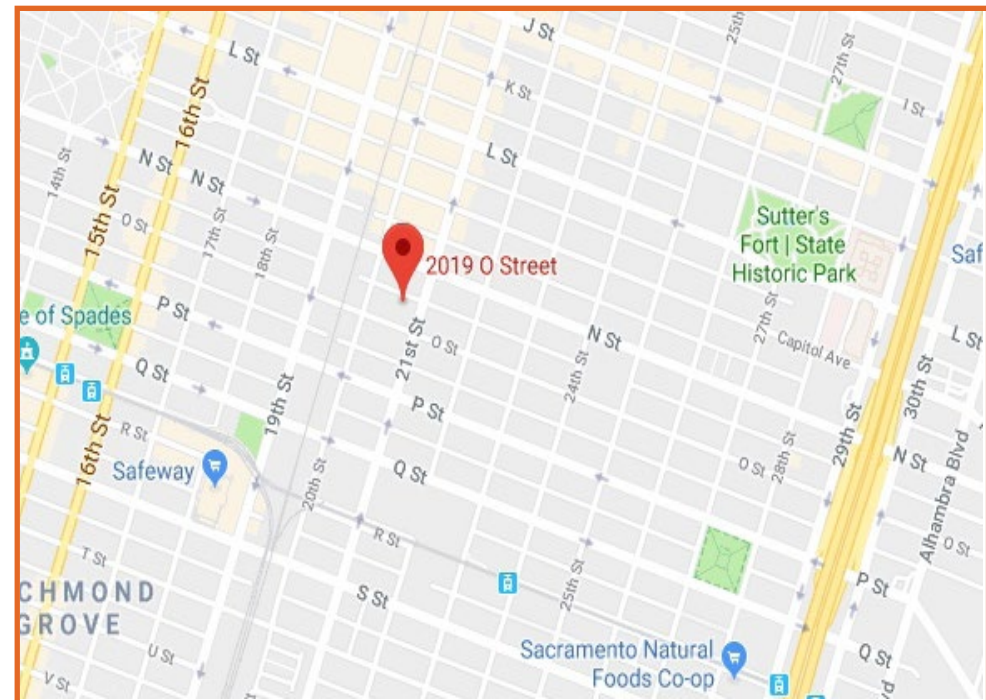
HOUSEHOLD	
Number of Households	4,567
Household Size	2
Households w/Children	515



HOUSEHOLD INCOME



POPULATION	
Estimated Population	8,672
Population Growth(Since 2010)	14.2%
Population Density	3,114
Median Age	37.71



Location



Midtown is considered to be the most centralized area in the city of Sacramento, with easy access to Downtown, Old Sacramento, West Sacramento and East Sacramento. It has long been known as the city's center of arts, entertainment and culture. This reputation coupled with an abundance of dining, bars and nightclubs has made it a desired housing location with its appeal to both trendy and traditional.

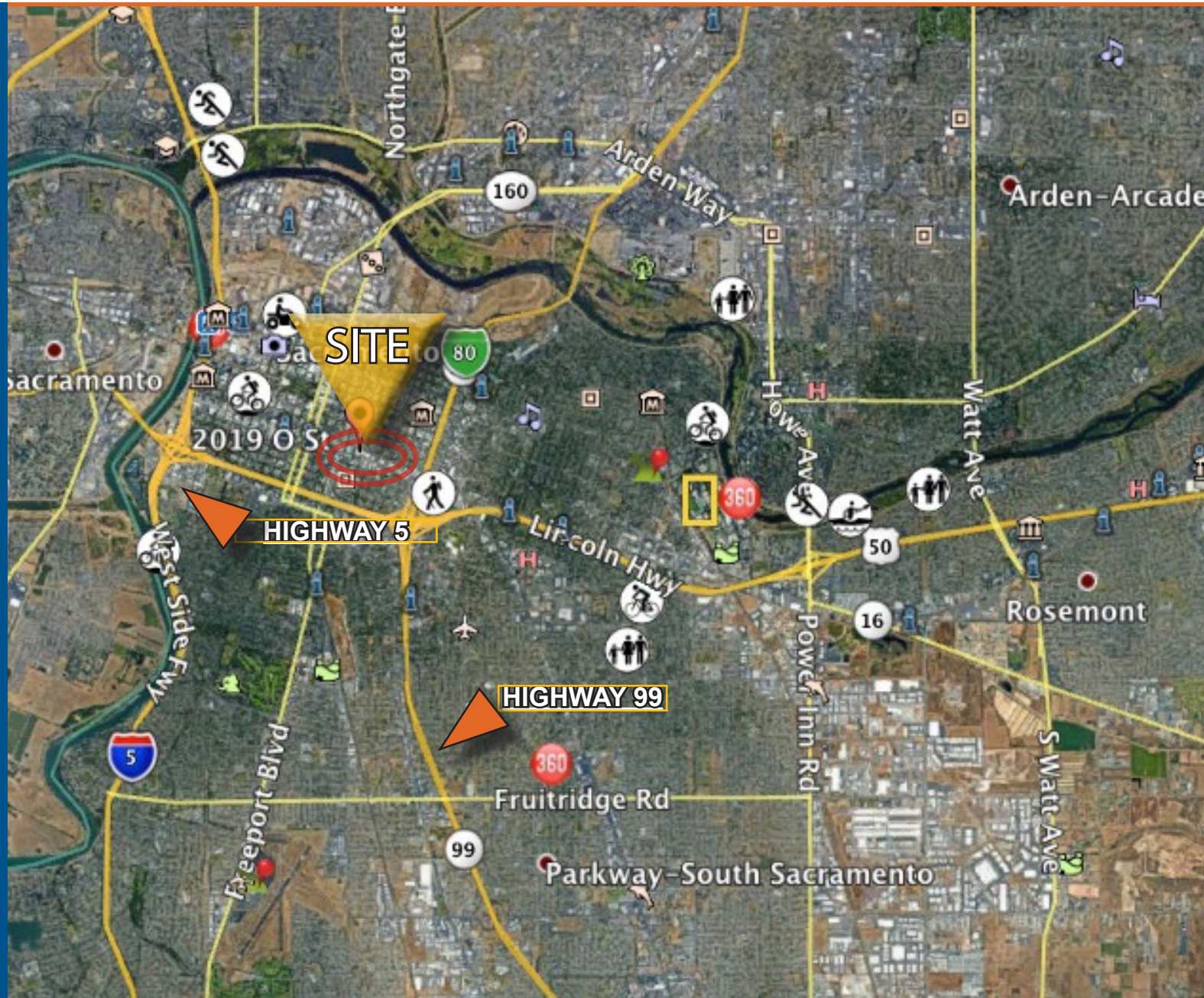
The neighborhood features Sacramento's most successful restaurants and nightlife venues and has an eclectic mix of local restaurants, art galleries, coffee houses and boutiques.

Location

MORE HIGHLIGHTS

The property benefits from strong visibility along O St. and 21st St. Situated between Interstate Business 80, Highway 5 and Highway 50 allows for easy access to all major Highways.

- NOW Available Retail/ Restaurant Space | \$1,495,000.00
- 6,200 SF | Lot Size 0.15 AC
- Zoned C2
- Parcel # 007-0245-015
- Traffic Volume on O St & 21st is 1,575. Traffic Volume on O St & P St Alley is 11,926



RESTAURANT 365

AVAILABLE FOR SALE

2019 O Street Sacramento CA 95811

FOR MORE INFORMATION

Daniel Mueller
Executive Director

916.704.9341

915 Howe Ave

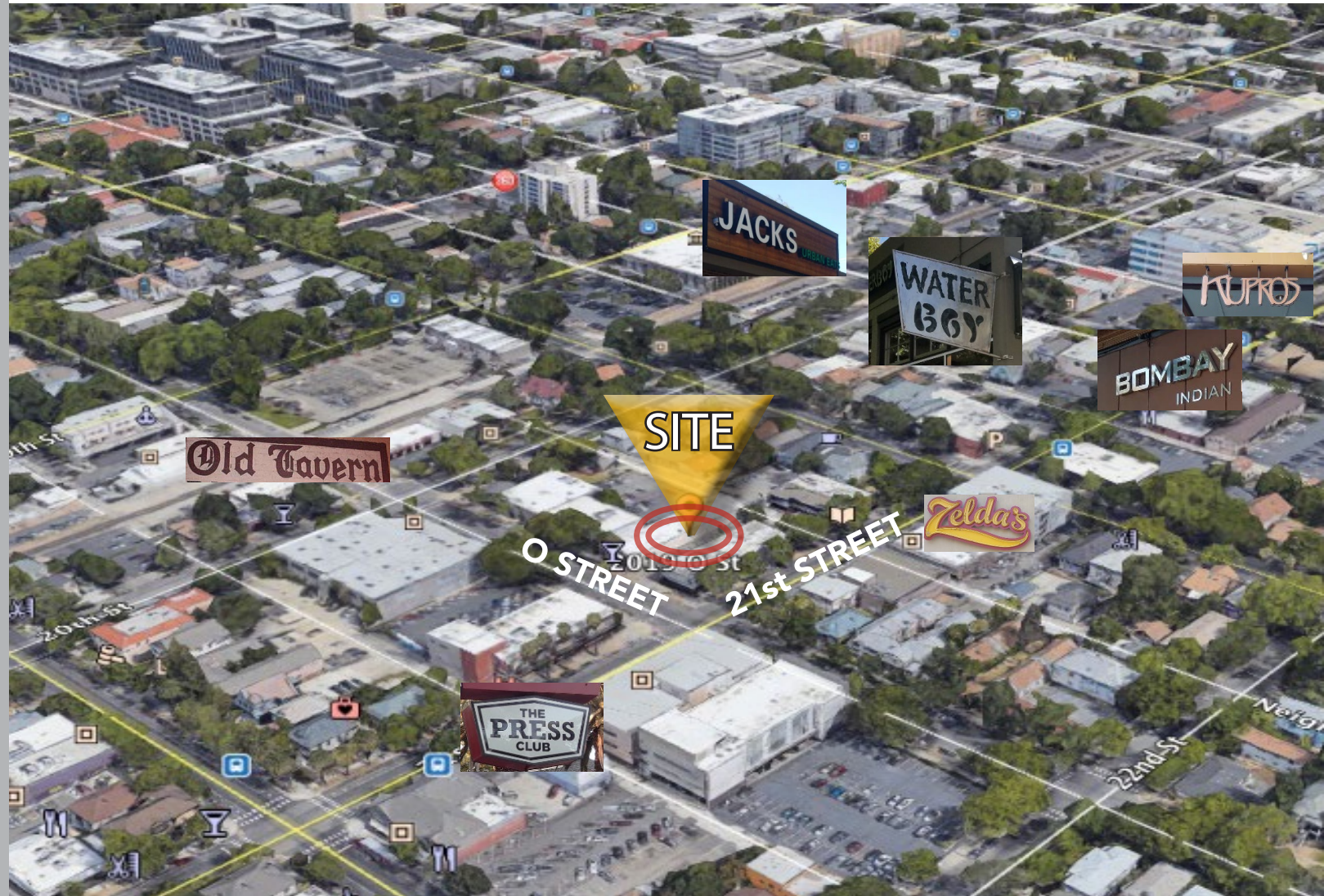
Sacramento, Ca 95825

dmueller@muellercommercial.com

Cal BRE# 01829919



M&M AND ASSOCIATES



2019 This information has been secured from sources believed to be reliable. Any projections, opinions, assumptions or estimates used are for example only and do not constitute any warranty or representation as to the accuracy of the information. All information should be verified through an independent investigation by the recipient, prior to execution of legal documents or purchase, to determine the suitability of the property for their needs. Logos and/or pictures are displayed for visual purpose only and are the property of their respective owners. CalBRE# 01183865