

E705694120227150846035708070.jpg 800x600 pixels



7417 Knightdale Blvd

7417 Knightdale Blvd, Knightdale, NC 27545



Phillip Rabil
MKM Commercial
214 W Millbrook Rd, Suite 101 b, Raleigh, NC 27609
prabil@mkmcommercial.com
(919) 907-0760



7417 Knightdale Blvd

\$12.00 /SF/Yr

This office condo is at East Park Offices, which is on highway 64 business route in Knightdale NC. The building measures out to be 1993 sq ft with a bottom floor of 1040 sq ft and a top floor measuring out as 953 sq ft. When it comes to the number and types of rooms per floor, the first floor contains 7 office rooms, 1 bathroom, 2 sinks, and 2 entry doorways. As for the second floor, it contains 3 offices, 1 bathroom, and 1 tiny storage room. The neighbors surrounding the building park is mostly national retail which includes Bojangles, Lowes, Waffle house, and much more. This condo would be an excellent choice for a real estate, law, or insurance firm. Don't miss a chance to lease out a condo that is located in a town which has obtained multiple shopping centers, national retailers, plus a new residential neighborhood in the past 10 years....

- Located on highway 64 (business route)
- Located on busiest town road
- Surrounded by multiple national retail locations
- Includes utilities
- 2 floors, 2 bathrooms, and 3 sinks
- Can be used for retail purposes



Rental Rate: \$12.00 /SF/Yr

Property Type: Office

Property Subtype: Office/Residential

Building Class: B

Rentable Building Area: 1,993 SF

Year Built: 1986

Walk Score ©: 39 (Car-Dependent)

Taxes: \$0.00 USD/SF/Mo

Operating Expenses: \$30.33 USD/SF/Mo

Rental Rate Mo: \$1.00 USD/SF/Mo

1st Floor Ste 101

Space Available	1,040 SF
Rental Rate	\$12.00 /SF/Yr
Date Available	September 21, 2020
Service Type	Full Service
Built Out As	Standard Office
Space Type	Relet
Space Use	Office
Lease Term	Negotiable

1

2nd Floor Ste 102

Space Available	953 SF
Rental Rate	\$12.00 /SF/Yr
Date Available	September 21, 2020
Service Type	Full Service
Built Out As	Standard Office
Space Type	Relet
Space Use	Office
Lease Term	Negotiable

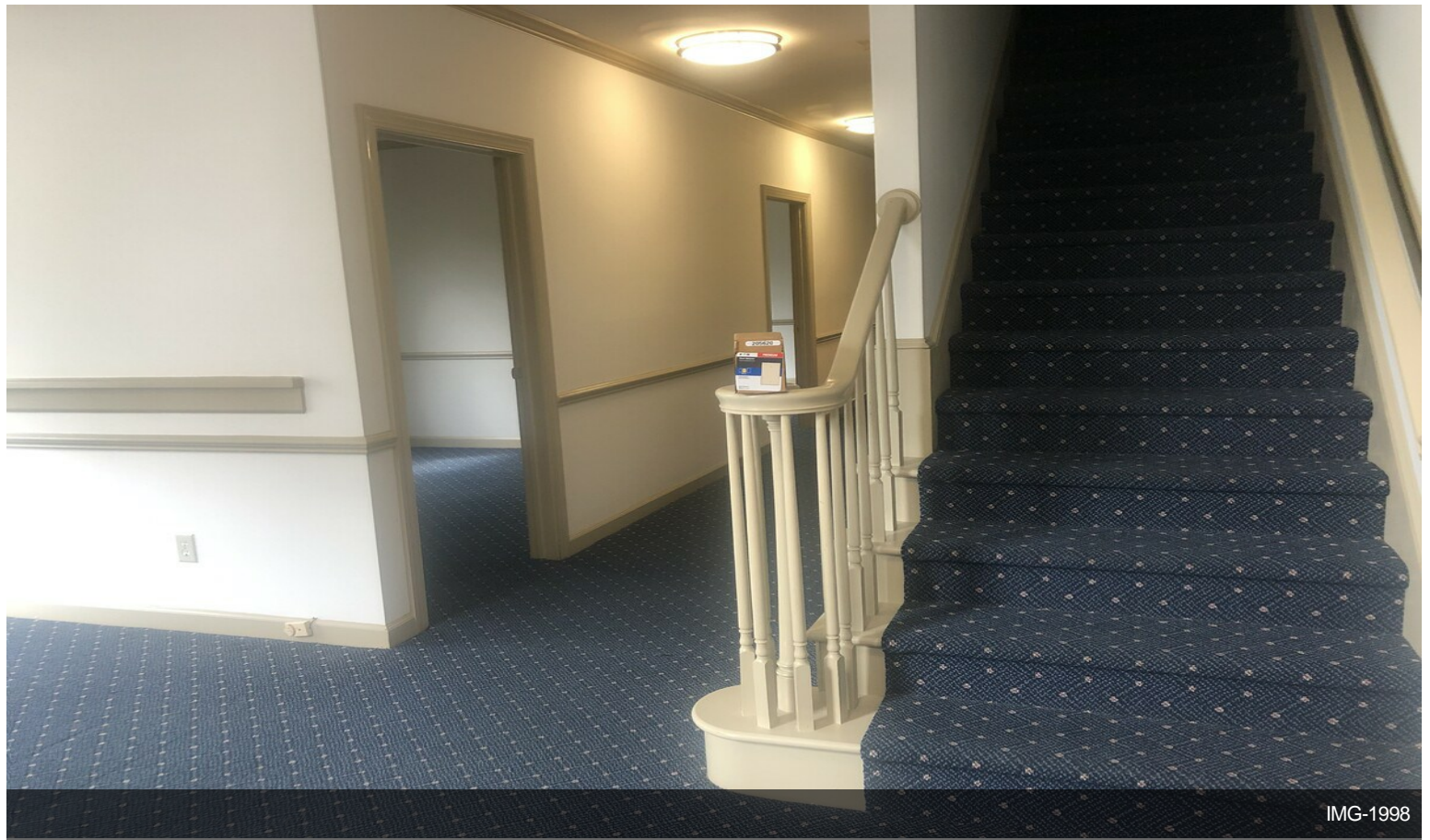
2



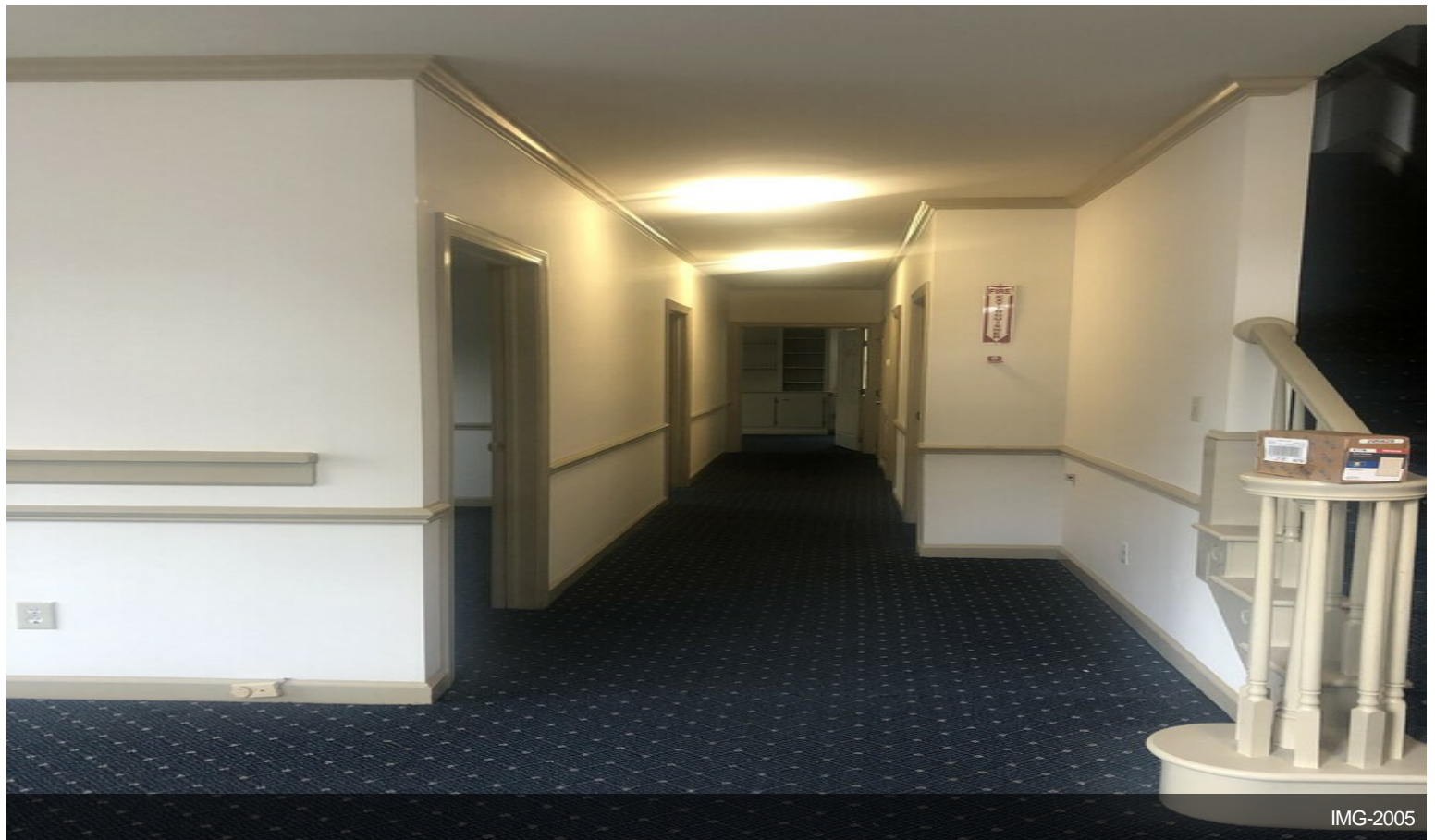
7417 Knightdale Blvd, Knightdale, NC 27545

This office condo is at East Park Offices, which is on highway 64 business route in Knightdale NC. The building measures out to be 1993 sq ft with a bottom floor of 1040 sq ft and a top floor measuring out as 953 sq ft. When it comes to the number and types of rooms per floor, the first floor contains 7 office rooms, 1 bathroom, 2 sinks, and 2 entry doorways. As for the second floor, it contains 3 offices, 1 bathroom, and 1 tiny storage room. The neighbors surrounding the building park is mostly national retail which includes Bojangles, Lowes, Waffle house, and much more. This condo would be an excellent choice for a real estate, law, or insurance firm. Don't miss a chance to lease out a condo that is located in a town which has obtained multiple shopping centers, national retailers, plus a new residential neighborhood in the past 10 years.

Property Photos

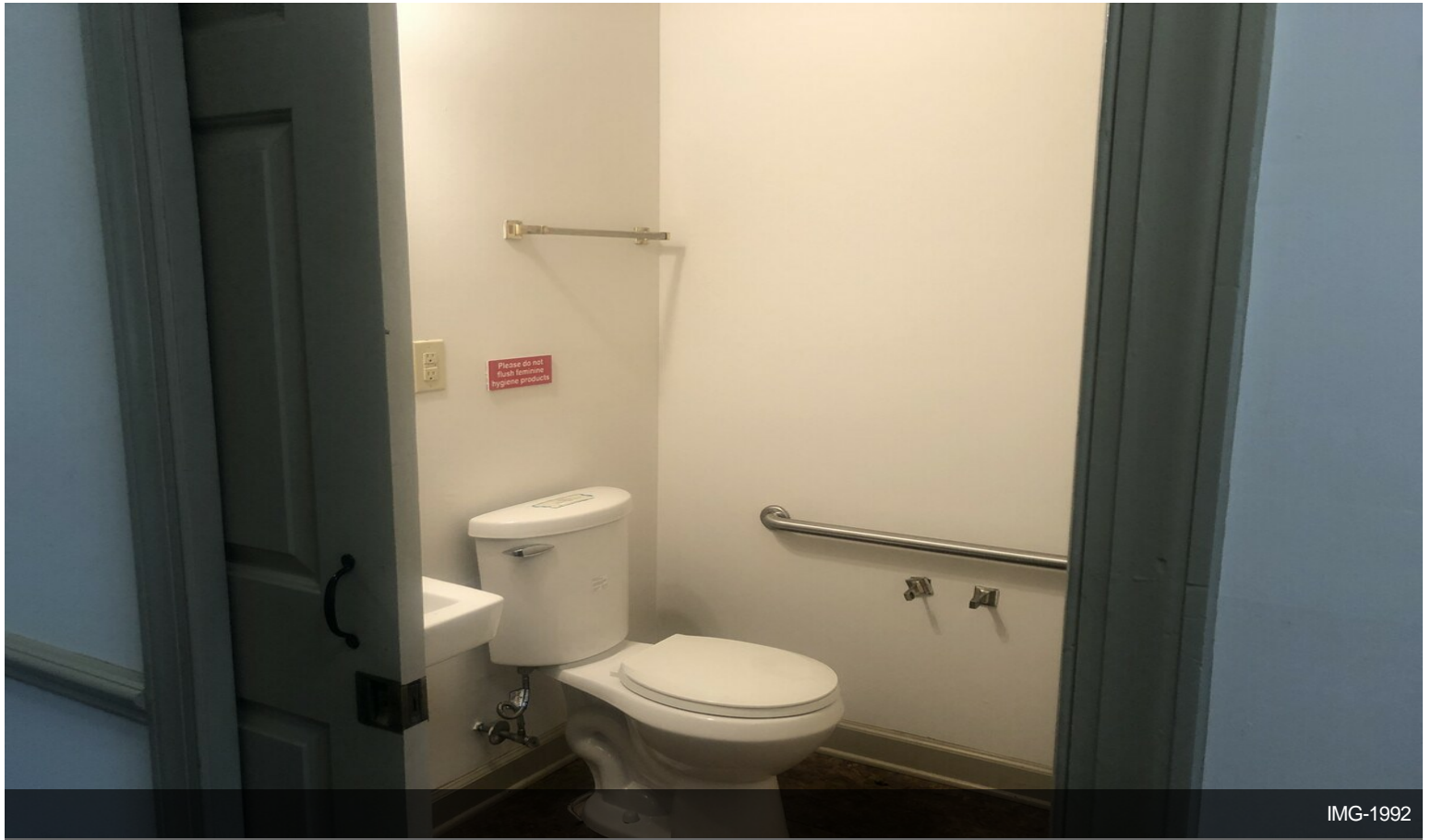


IMG-1998



IMG-2005

Property Photos



IMG-1992



IMG-1993

Property Photos



IMG-1994



IMG-1995

Property Photos



IMG-2001



IMG-2002

Property Photos



IMG-2003



IMG-2004

Property Photos

