

AVAILABLE
FOR SALE



KEY POINTS



OFFICE/RETAIL
CUP IN-PLACE



1,462 SF
BUILDING SIZE



TWO
CAR GARAGE



1946
BUILT



90
WALK SCORE®



4,126 SF
PARCEL

500 BROADWAY

LAGUNA BEACH, CA



Freestanding office/retail building located in the iconic downtown Laguna Beach with potential redevelopment opportunity adding additional square footage

The building features a large open bullpen for office or retail uses and recently upgraded façade and bathroom.

Immediate proximity to restaurants, hotels, retail amenities, Art Festival, Pageant of The Masters, Sawdust Festival, Main Beach & the Laguna Playhouse.

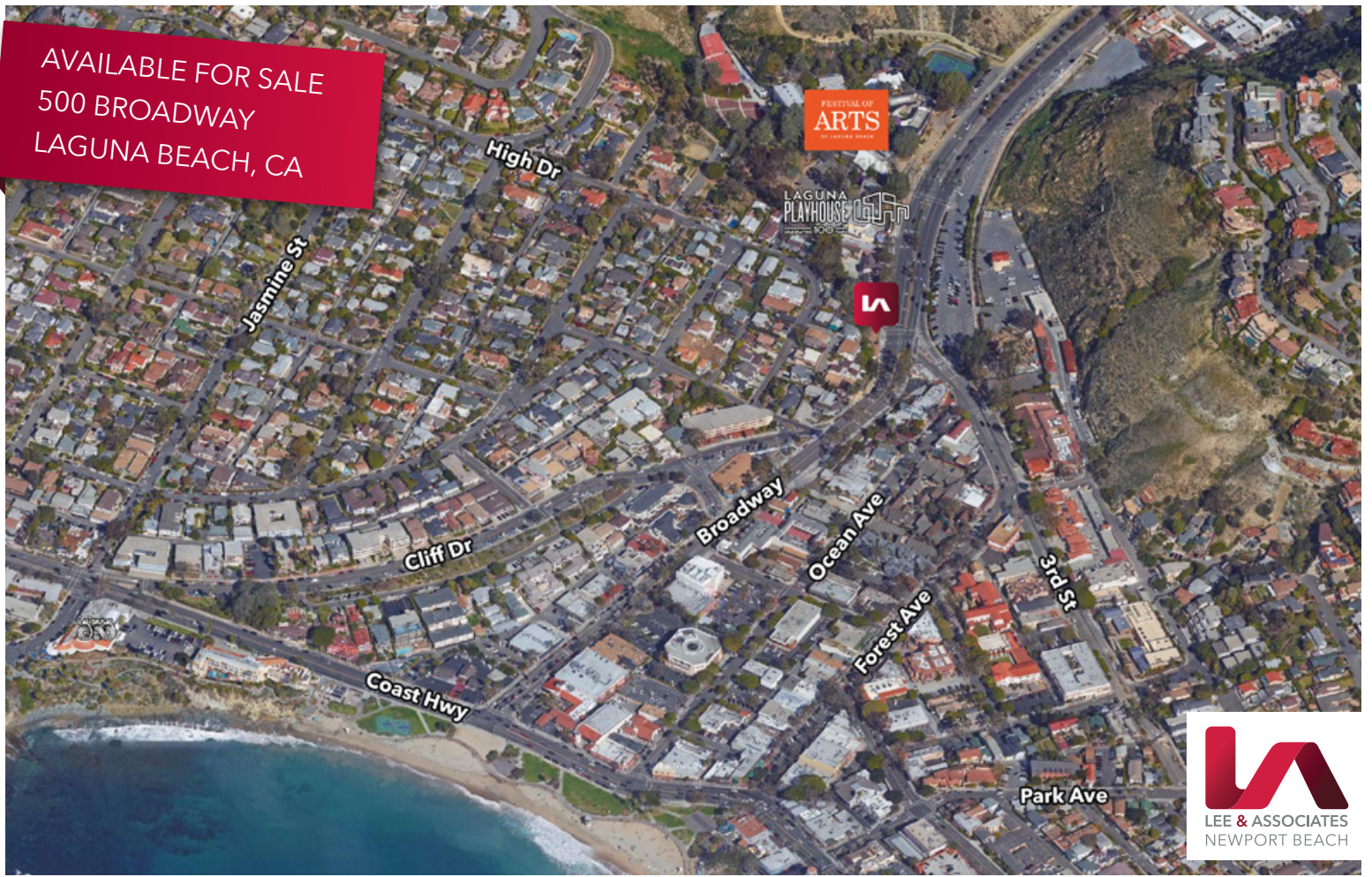
CONTACT ME

JUDD HIETBRINK
949.724.4709
jhietbrink@lee-associates.com
DRE #: 01785515

LEE & ASSOCIATES
NEWPORT BEACH

DISCLAIMER: The information contained herein has been obtained from the property owner or other third party and is provided to you without verification as to accuracy. We (Lee & Associates, its brokers, employees, agents, principals, officers, directors and affiliates) make no warranty or representation regarding the information, property, or transaction. You and your attorneys, advisors and consultants should conduct your own investigation of the property and transaction.

AVAILABLE FOR SALE
500 BROADWAY
LAGUNA BEACH, CA



CONTACT ME

JUDD HIETBRINK

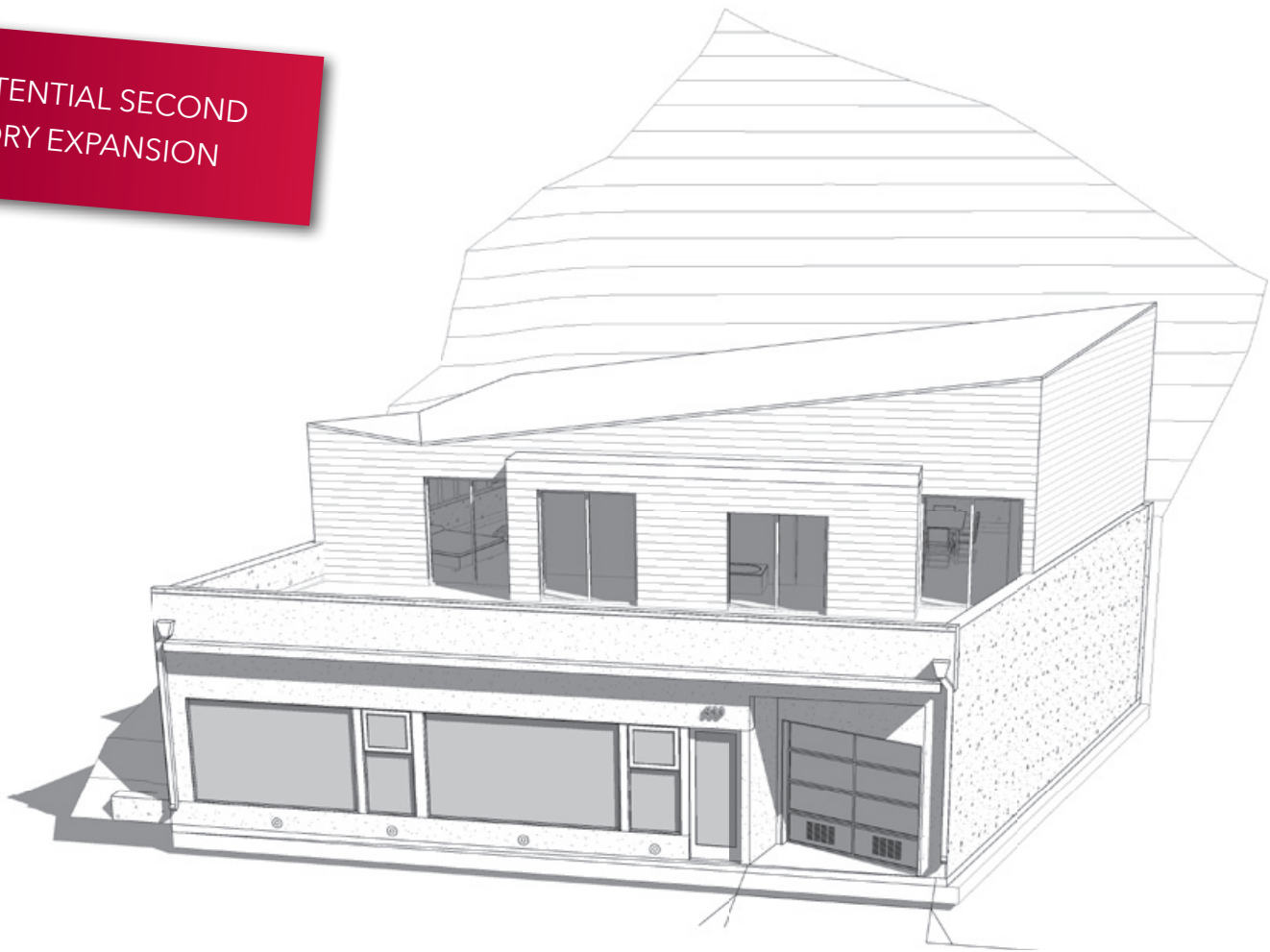
949.724.4709

jhietbrink@lee-associates.com

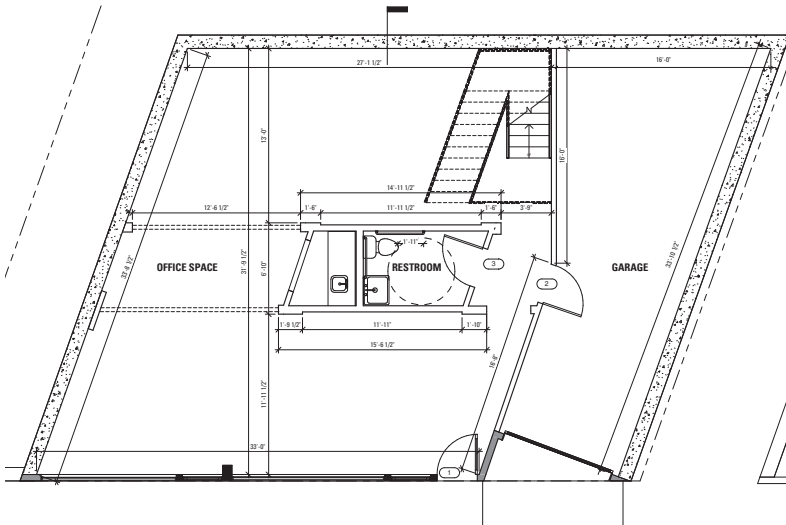
DRE #: 01785515

DISCLAIMER: The information contained herein has been obtained from the property owner or other third party and is provided to you without verification as to accuracy. We (Lee & Associates, its brokers, employees, agents, principals, officers, directors and affiliates) make no warranty or representation regarding the information, property, or transaction. You and your attorneys, advisors and consultants should conduct your own investigation of the property and transaction.

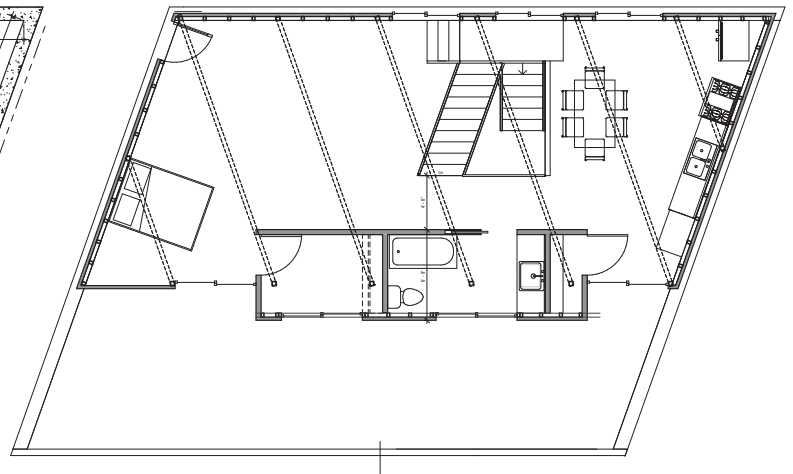
POTENTIAL SECOND
STORY EXPANSION



EXISTING 1ST FLOOR - FLOOR PLAN



POTENTIAL 2ND FLOOR - FLOOR PLAN



CONTACT ME

JUDD HIETBRINK
949.724.4709
jhietbrink@lee-associates.com
DRE #: 01785515

DISCLAIMER: The information contained herein has been obtained from the property owner or other third party and is provided to you without verification as to accuracy. We (Lee & Associates, its brokers, employees, agents, principals, officers, directors and affiliates) make no warranty or representation regarding the information, property, or transaction. You and your attorneys, advisors and consultants should conduct your own investigation of the property and transaction.