



# FOR SUBLEASE

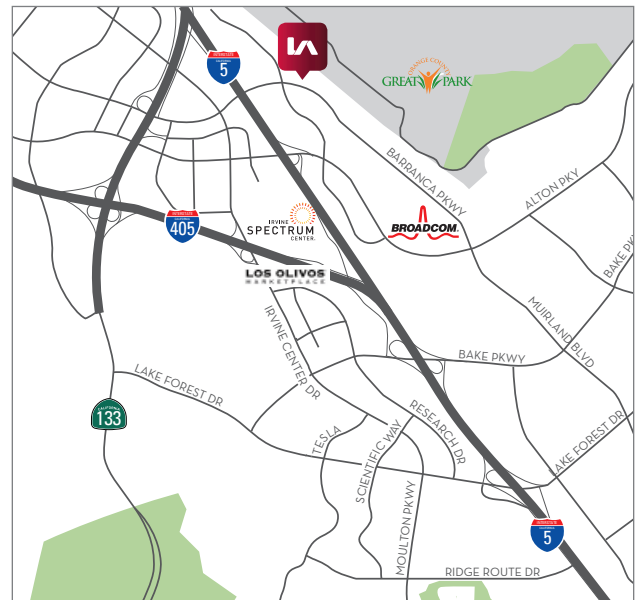
±3,635 SQUARE FOOT  
OFFICE UNIT

15375 Barranca Pkwy.  
Unit B-107, Irvine, CA



## PROPERTY FEATURES

- Sublease Term thru June 30, 2021
- Immediate 405/5/133 Freeway Access
- Walking distance to Alton Marketplace (Costco, Wendy's, Del Taco, Walmart, PGA Superstore...)
- Minutes to Irvine Spectrum Entertainment Center



## CONTACT ME

### TRAVIS HAINING

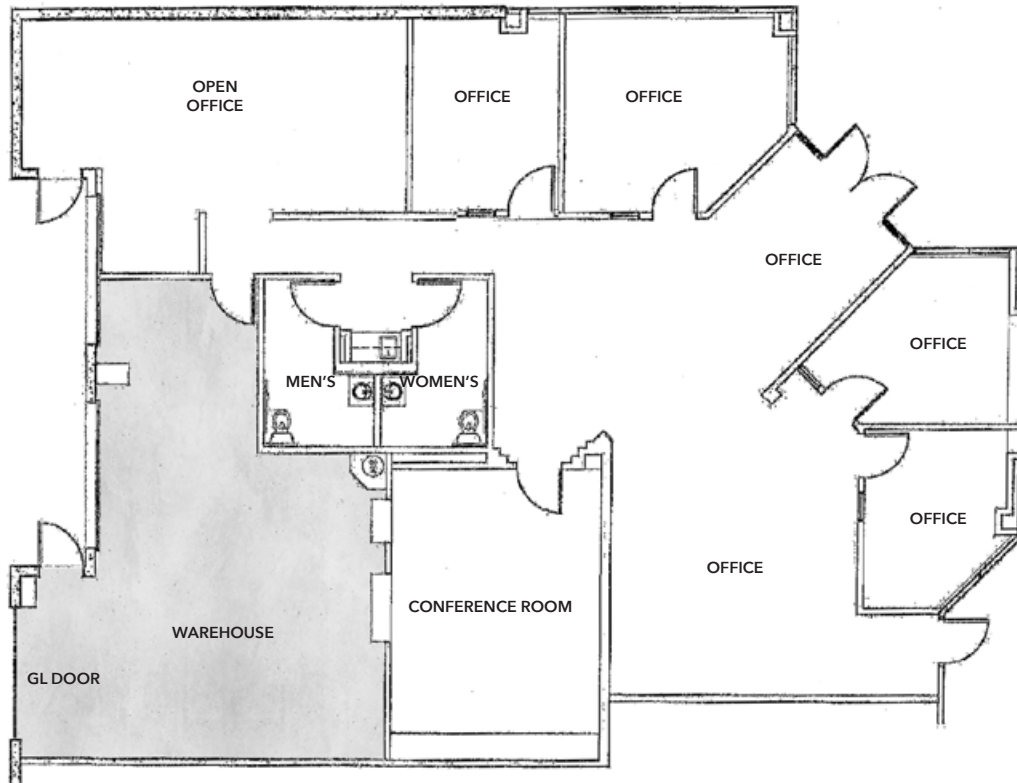
SVP/Principal  
DRE # 01483191

949.724.4711

thaining@lee-associates.com



**DISCLAIMER:** The information contained herein has been obtained from the property owner or other third party and is provided to you without verification as to accuracy. We (Lee & Associates, its brokers, employees, agents, principals, officers, directors and affiliates) make no warranty or representation regarding the information, property, or transaction. You and your attorneys, advisors and consultants should conduct your own investigation of the property and transaction.



**CONTACT ME**

**TRAVIS HAINING**

SVP/Principal  
DRE # 01483191

949.724.4711

thaining@lee-associates.com



**DISCLAIMER:** The information contained herein has been obtained from the property owner or other third party and is provided to you without verification as to accuracy. We (Lee & Associates, its brokers, employees, agents, principals, officers, directors and affiliates) make no warranty or representation regarding the information, property, or transaction. You and your attorneys, advisors and consultants should conduct your own investigation of the property and transaction.