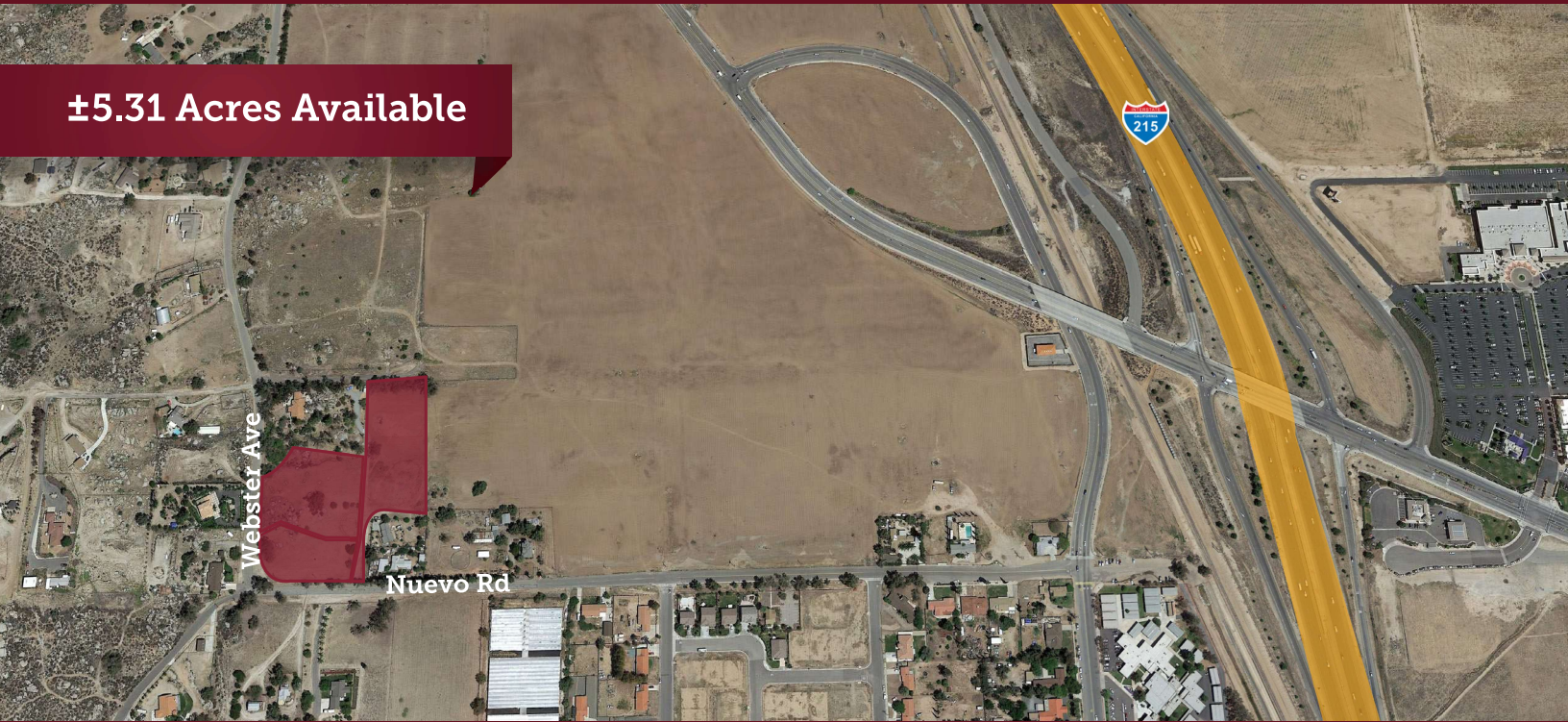


For Sale | NEC Webster Ave. & Nuevo Rd., Perris, CA

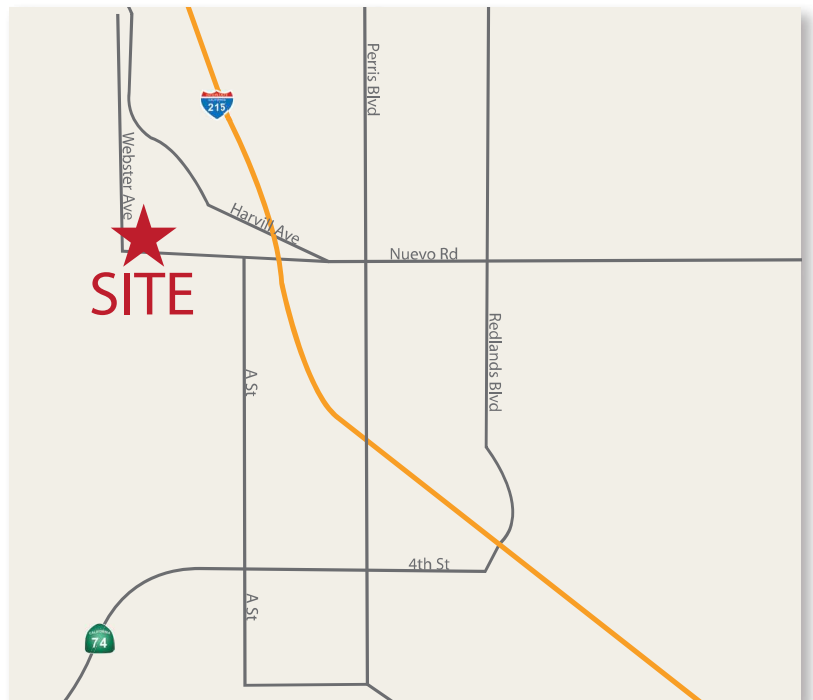
±5.31 Acres Available



Property Features

- Located in the County of Riverside
- Close to I-215 Freeway
- Potential for Industrial uses
- Utilities in Nuevo Road
- A-1 Zoning

APN'S: 305-270-030, 031,032



Vic Onorio

DRE#: 00932747 // 951.276.3623

vonorio@lee-associates.com