

±1,989 SF OFFICE/RETAIL CONDO FOR SALE

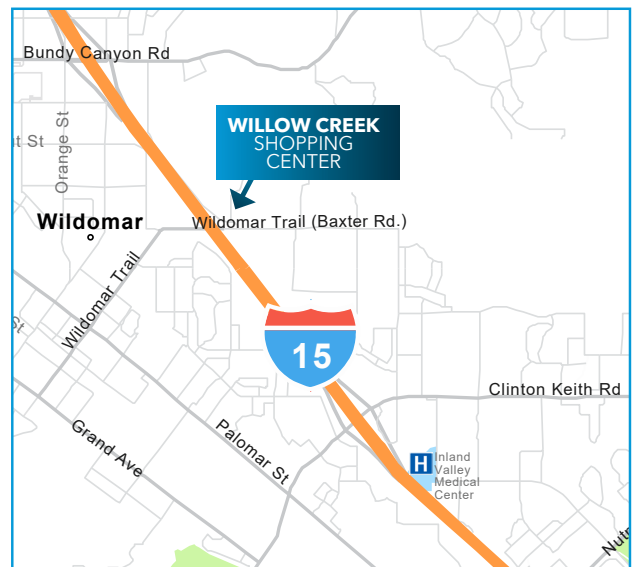
# WILLOW CREEK SHOPPING CENTER

34859 FREDERICK ST., SUITE 108 | WILDOMAR, CA



## PROPERTY FEATURES:

- Office/Retail Condo Unit for Sale.
- Unit 108 - ±1,989 SF. Reception, three private offices, conference room, open area, coffee bar and restroom.
- Upgraded tenant improvements. Bamboo wood flooring.
- Excellent Location with easy access to the I-15.
- Close proximity to Inland Valley Hospital.
- Seller financing available.
- Association Fees \$348.00 per month.



## SALES PRICE:

**\$410,000 / \$206.13 PSF**

Sheri Shoemaker  
951.445.4510  
sshoeemaker@leetemecula.com  
DRE #00846946

Mary Piper  
951.445.4516  
mpiper@leetemecula.com  
DRE #01268829

No warranty or representation has been made to the accuracy of the foregoing information. Terms of sale or lease and availability are subject to change or withdrawal without notice. Lee & Associates Commercial Real Estate Services, Inc. - Riverside. 25240 Hancock Avenue, Suite 100 - Murrieta, CA 92562 Corporate ID# 01048055

±1,989 SF OFFICE/RETAIL CONDO FOR SALE

# WILLOW CREEK SHOPPING CENTER

34859 FREDERICK ST., SUITE 108 | WILDOMAR, CA



Sheri Shoemaker  
951.445.4510  
sshoemaker@leetemecula.com  
DRE #00846946

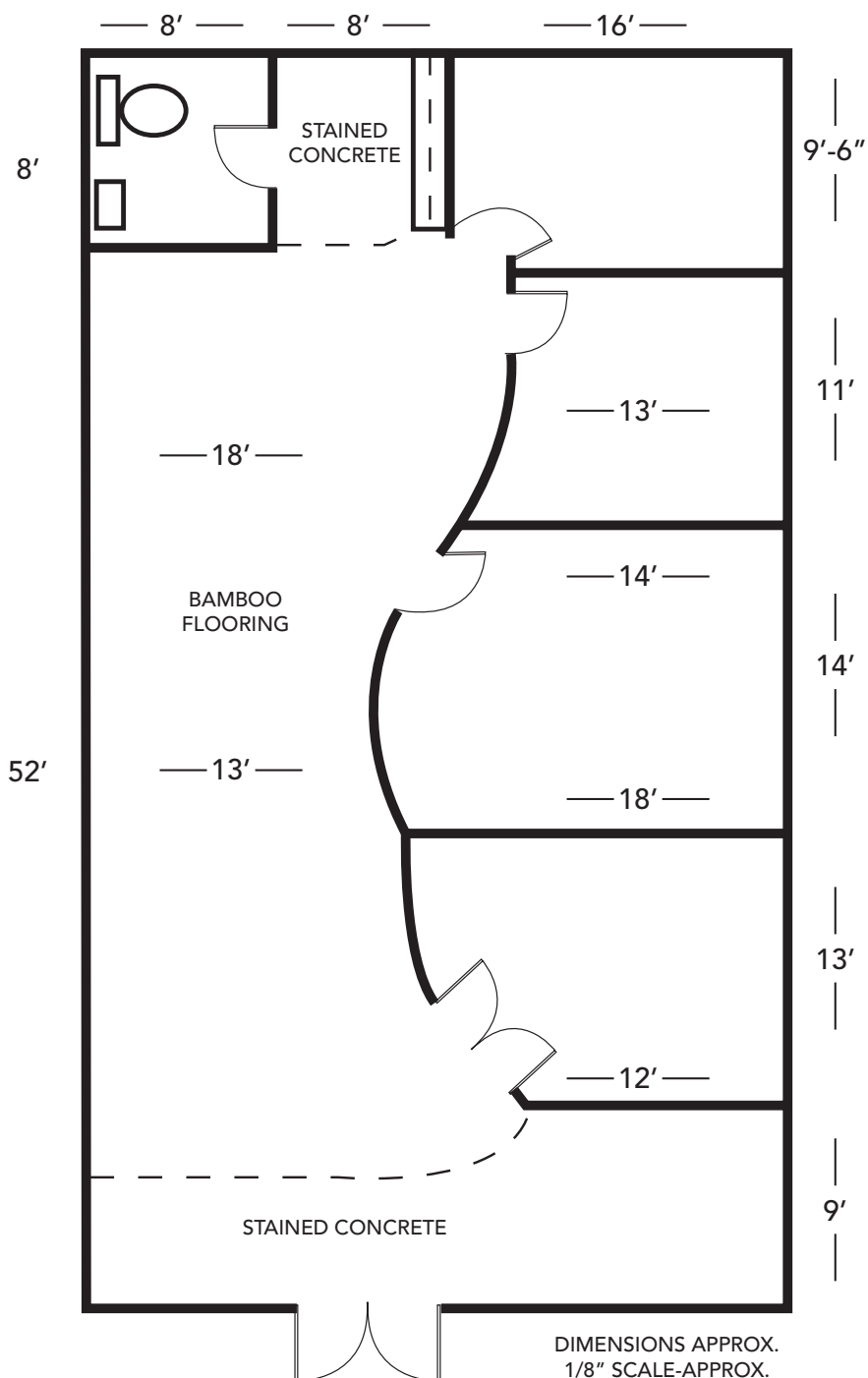
Mary Piper  
951.445.4516  
mpiper@leetemecula.com  
DRE #01268829

No warranty or representation has been made to the accuracy of the foregoing information. Terms of sale or lease and availability are subject to change or withdrawal without notice. Lee & Associates Commercial Real Estate Services, Inc. - Riverside. 25240 Hancock Avenue, Suite 100 - Murrieta, CA 92562 Corporate ID# 01048055

±1,989 SF OFFICE/RETAIL CONDO FOR SALE

# WILLOW CREEK SHOPPING CENTER

34859 FREDERICK ST., SUITE 108 | WILDOMAR, CA



Sheri Shoemaker  
951.445.4510  
sshoeemaker@leetemecula.com  
DRE #00846946

Mary Piper  
951.445.4516  
mpiper@leetemecula.com  
DRE #01268829

No warranty or representation has been made to the accuracy of the foregoing information. Terms of sale or lease and availability are subject to change or withdrawal without notice. Lee & Associates Commercial Real Estate Services, Inc. - Riverside. 25240 Hancock Avenue, Suite 100 - Murrieta, CA 92562 Corporate ID# 01048055