

**FOR LEASE**  
RETAIL SPACE



**BROOKSTONE**  
**RETAIL CENTER**

31735 RIVERSIDE DRIVE | LAKE ELSINORE

 **LEE &  
ASSOCIATES**  
COMMERCIAL REAL ESTATE SERVICES

# PROPERTY HIGHLIGHTS

- 2,100 SF Retail Space for Lease
- Lake and foothill views
- Traffic Volume - 30,000 vehicles
- Monument and building signage visible from Riverside Drive
- Private in suite restroom
- Roll-up Door
- Building sits within a 41,000sf mutli-tenant retail center
- Ideal for Martial Arts, Dance or retail user!

## BROOKSTONE RETAIL CENTER

31735 RIVERSIDE DRIVE | LAKE ELSINORE

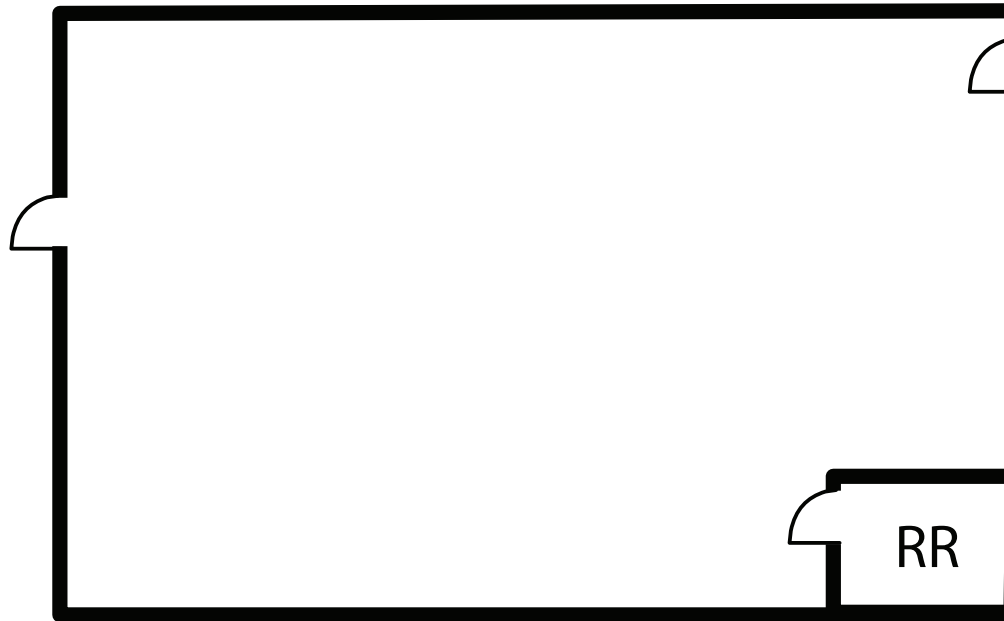


# AVAILABILITY

## BROOKSTONE RETAIL CENTER

31735 RIVERSIDE DRIVE | LAKE ELSINORE

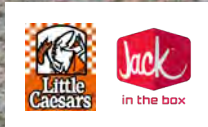
| UNIT | RSF    | RATE/SF        | COMMENTS   |
|------|--------|----------------|--|
| M    | ±2,100 | \$1.45 PSF, MG | Open area, restroom, roll up door. Lease rate includes CAM's |



# BROOKSTONE RETAIL CENTER

31735 RIVERSIDE DRIVE | LAKE ELSINORE

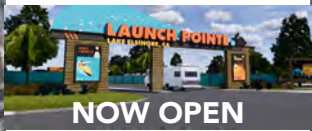
**OUTLETS**  
AT LAKE ELSINORE



**30 MILES**  
TO ORANGE  
COUNTY

**BROOKSTONE  
RETAIL CENTER**

**75 MILES**  
TO SAN DIEGO



RIVERSIDE DR

LAKESHORE DR

LAKE ELSINORE



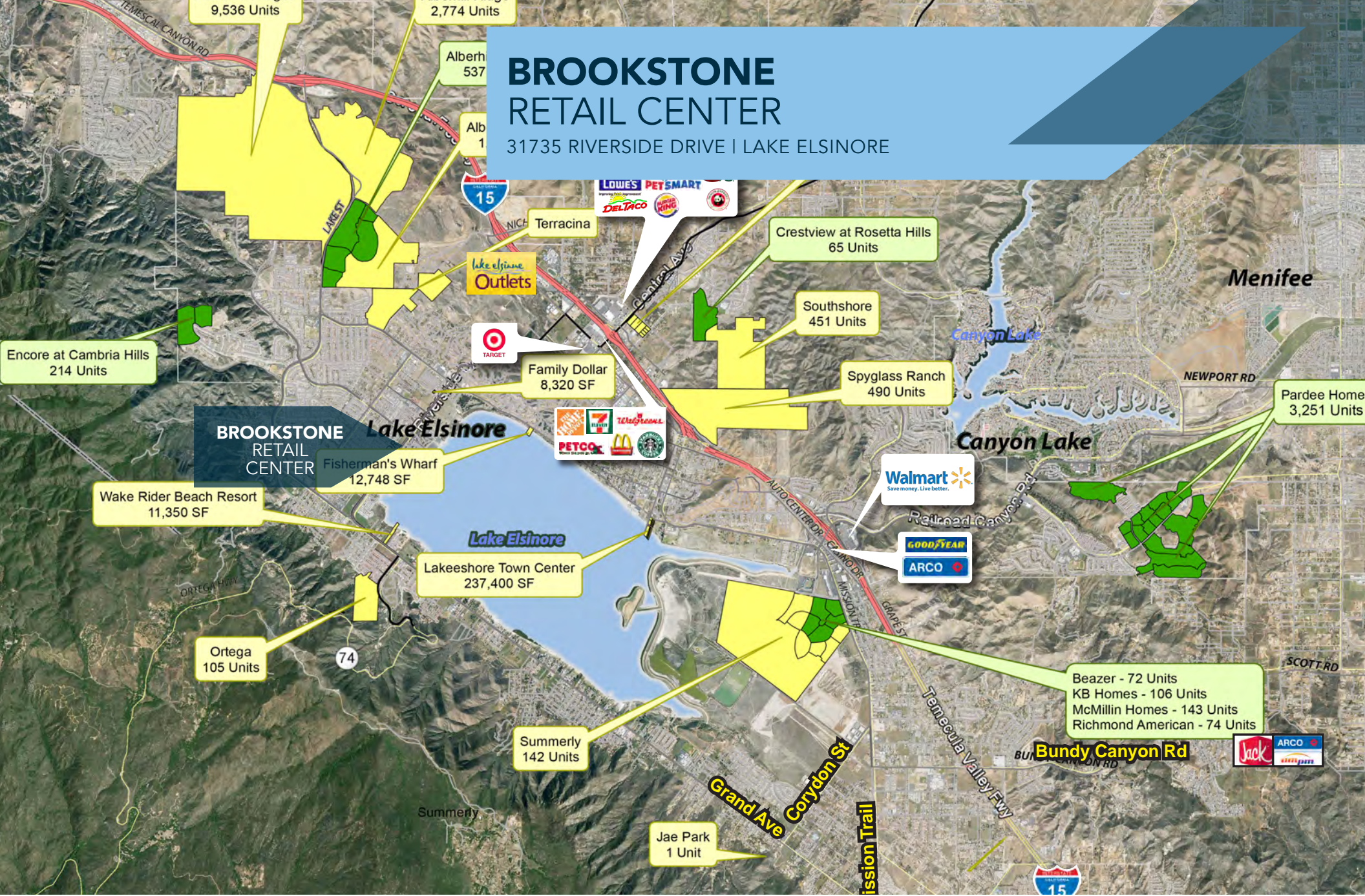
**MATT SHAW, CCIM**  
Vice President  
951.445.4502  
mshaw@leetemecula.com  
DRE# 01917622

**BLAKE VALDEZ**  
Associate  
951.445.4509  
bvaldez@leetemecula.com  
DRE# 02107941

No warranty or representation has been made to the accuracy of the foregoing information. Terms of sale or lease and availability are subject to change or withdrawal without notice. Lee & Associates Commercial Real Estate Services, Inc. - Riverside. 25240 Hancock Avenue, Suite 100 - Murrieta, CA 92562 | Corporate ID# 01048055

# BROOKSTONE RETAIL CENTER

31735 RIVERSIDE DRIVE | LAKE ELSINORE



**MATT SHAW, CCIM**  
Vice President  
951.445.4502  
mshaw@leetemecula.com  
DRE# 01917622

**BLAKE VALDEZ**  
Associate  
951.445.4509  
bvaldez@leetemecula.com  
DRE# 02107941

No warranty or representation has been made to the accuracy of the foregoing information. Terms of sale or lease and availability are subject to change or withdrawal without notice. Lee & Associates Commercial Real Estate Services, Inc. - Riverside. 25240 Hancock Avenue, Suite 100 - Murrieta, CA 92562 | Corporate ID# 01048055

# BROOKSTONE RETAIL CENTER

31735 RIVERSIDE DRIVE | LAKE ELSINORE



**MATT SHAW, CCIM**  
Vice President  
951.445.4502  
mshaw@leetemecula.com  
DRE# 01917622

**BLAKE VALDEZ**  
Associate  
951.445.4509  
bvaldez@leetemecula.com  
DRE# 02107941

No warranty or representation has been made to the accuracy of the foregoing information. Terms of sale or lease and availability are subject to change or withdrawal without notice. Lee & Associates Commercial Real Estate Services, Inc. - Riverside. 25240 Hancock Avenue, Suite 100 - Murrieta, CA 92562 | Corporate ID# 01048055