

FOR LEASE

PROFESSIONAL OFFICE SPACE

LEE & ASSOCIATES
COMMERCIAL REAL ESTATE SERVICES



DIAMOND PROFESSIONAL CENTER

31641 AUTO CENTER DRIVE | LAKE ELSINORE

PROPERTY HIGHLIGHTS

- Fully improved office suite for lease
- Easy access to I-15 via Diamond Drive/
Railroad Canyon Road
- Building and monument signage with Diamond Drive visibility available
- Walking distance to numerous restaurants, retail shops and Lake Elsinore Storm Stadium
- Ideal for Tax, Law or Accounting Professionals, Chiropractor
- Fios Enabled

DIAMOND PROFESSIONAL CENTER

31641 AUTO CENTER DRIVE | LAKE ELSINORE



MATT SHAW, CCIM
Vice President
951.445.4502
mshaw@leetemecula.com
DRE# 01917622

BLAKE VALDEZ
Associate
951.445.4509
bvaldez@leetemecula.com
DRE# 02107941

No warranty or representation has been made to the accuracy of the foregoing information. Terms of sale or lease and availability are subject to change or withdrawal without notice. Lee & Associates Commercial Real Estate Services, Inc. - Riverside. 25240 Hancock Avenue, Suite 100 - Murrieta, CA 92562 | Corporate ID# 01048055

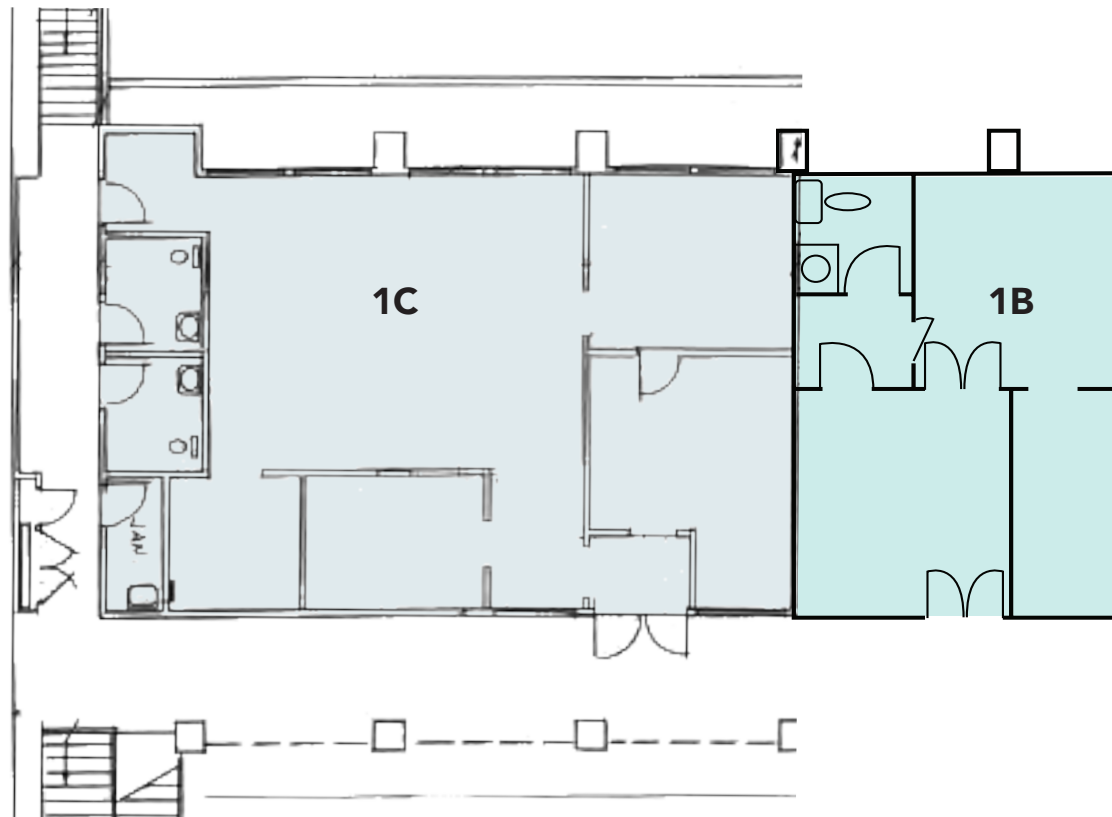
AVAILABILITY

DIAMOND PROFESSIONAL CENTER

31641 AUTO CENTER DRIVE | LAKE ELSINORE

SUITE	RSF	RATE/SF	COMMENTS
1B	±600	\$1.50 PSF, MG	Reception, Private Office, Storage/Breakroom. 30 days notice.
1C	±1,380	\$1.40 PSF, MG*	Double door entry, three private offices and open office space. 30 days notice.

*\$50.00 additional monthly fee for water



MATT SHAW, CCIM
Vice President
951.445.4502
mshaw@leetemecula.com
DRE# 01917622

BLAKE VALDEZ
Associate
951.445.4509
bvaldez@leetemecula.com
DRE# 02107941

No warranty or representation has been made to the accuracy of the foregoing information. Terms of sale or lease and availability are subject to change or withdrawal without notice. Lee & Associates Commercial Real Estate Services, Inc. - Riverside. 25240 Hancock Avenue, Suite 100 - Murrieta, CA 92562 | Corporate ID# 01048055

DIAMOND PROFESSIONAL CENTER

31641 AUTO CENTER DRIVE | LAKE ELSINORE



MATT SHAW, CCIM
Vice President
951.445.4502
mshaw@leetemecula.com
DRE# 01917622

BLAKE VALDEZ
Associate
951.445.4509
bvaldez@leetemecula.com
DRE# 02107941

No warranty or representation has been made to the accuracy of the foregoing information. Terms of sale or lease and availability are subject to change or withdrawal without notice. Lee & Associates Commercial Real Estate Services, Inc. - Riverside. 25240 Hancock Avenue, Suite 100 - Murrieta, CA 92562 | Corporate ID# 01048055

DIAMOND PROFESSIONAL CENTER

31641 AUTO CENTER DRIVE | LAKE ELSINORE



MATT SHAW, CCIM
Vice President
951.445.4502
mshaw@leetemecula.com
DRE# 01917622

BLAKE VALDEZ
Associate
951.445.4509
bvaldez@leetemecula.com
DRE# 02107941

No warranty or representation has been made to the accuracy of the foregoing information. Terms of sale or lease and availability are subject to change or withdrawal without notice. Lee & Associates Commercial Real Estate Services, Inc. - Riverside. 25240 Hancock Avenue, Suite 100 - Murrieta, CA 92562 | Corporate ID# 01048055