

MS VAN BUREN II BUSINESS PARK

±14,310 SF WAREHOUSE AVAILABLE FOR LEASE (EXPANDABLE)

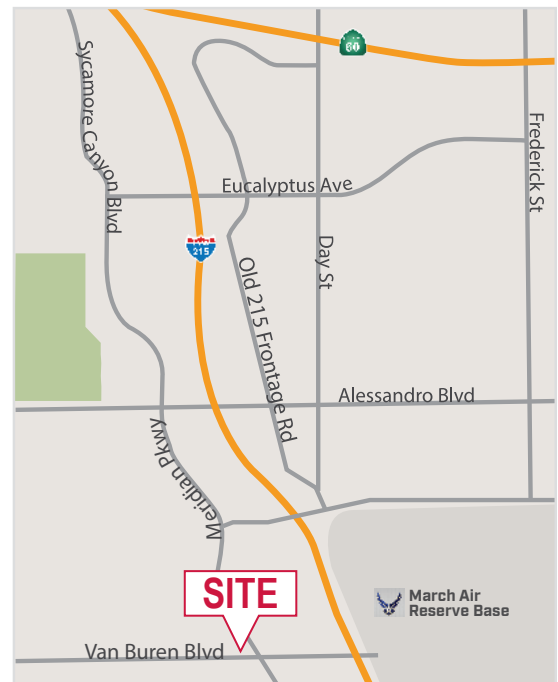
21840 Van Buren Blvd., Riverside, CA - Bldg. 1, Suite 103 & 104



PROPERTY HIGHLIGHTS

- ±14,310 Industrial Warehouse
- ±950 SF Office
- New Construction
- 24 Auto Parking Stalls
- (MU) Mix-Used/Industrial
- 16'-18' Clear Height
- 400 Amps Power
- 2 (12'x14') Ground-Level Doors
- ESFR Sprinkler
- Master Plan Association
- Close Proximity to I-215 & 60 Freeways

*CAN BE COMBINED WITH CONDO 1, STE 101 & 102
FOR A TOTAL OF ±25,930 SF



R. MARIO CALVILLO

951.276.3657 | DRE#: 01911573
MCALVILLO@LEERIVERSIDE.COM

GARRY JENKINS

951.276.3621 | DRE#: 02008115
GJENKINS@LEERIVERSIDE.COM

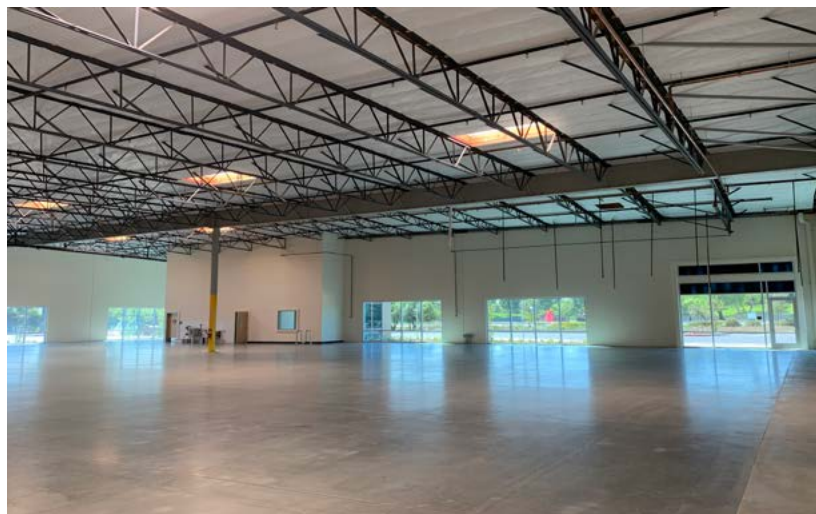
DONALD KAZANJIAN

909.373.2929 | DRE#: 00860886
DKAZANJIAN@LEE-ASSOC.COM

MS VAN BUREN II BUSINESS PARK

±14,310 SF WAREHOUSE AVAILABLE FOR LEASE (EXPANDABLE)

21840 Van Buren Blvd., Riverside, CA - Bldg. 1, Suite 103 & 104



R. MARIO CALVILLO

951.276.3657 | DRE#: 01911573
MCALVILLO@LEERIVERSIDE.COM

GARRY JENKINS

951.276.3621 | DRE#: 02008115
GJENKINS@LEERIVERSIDE.COM

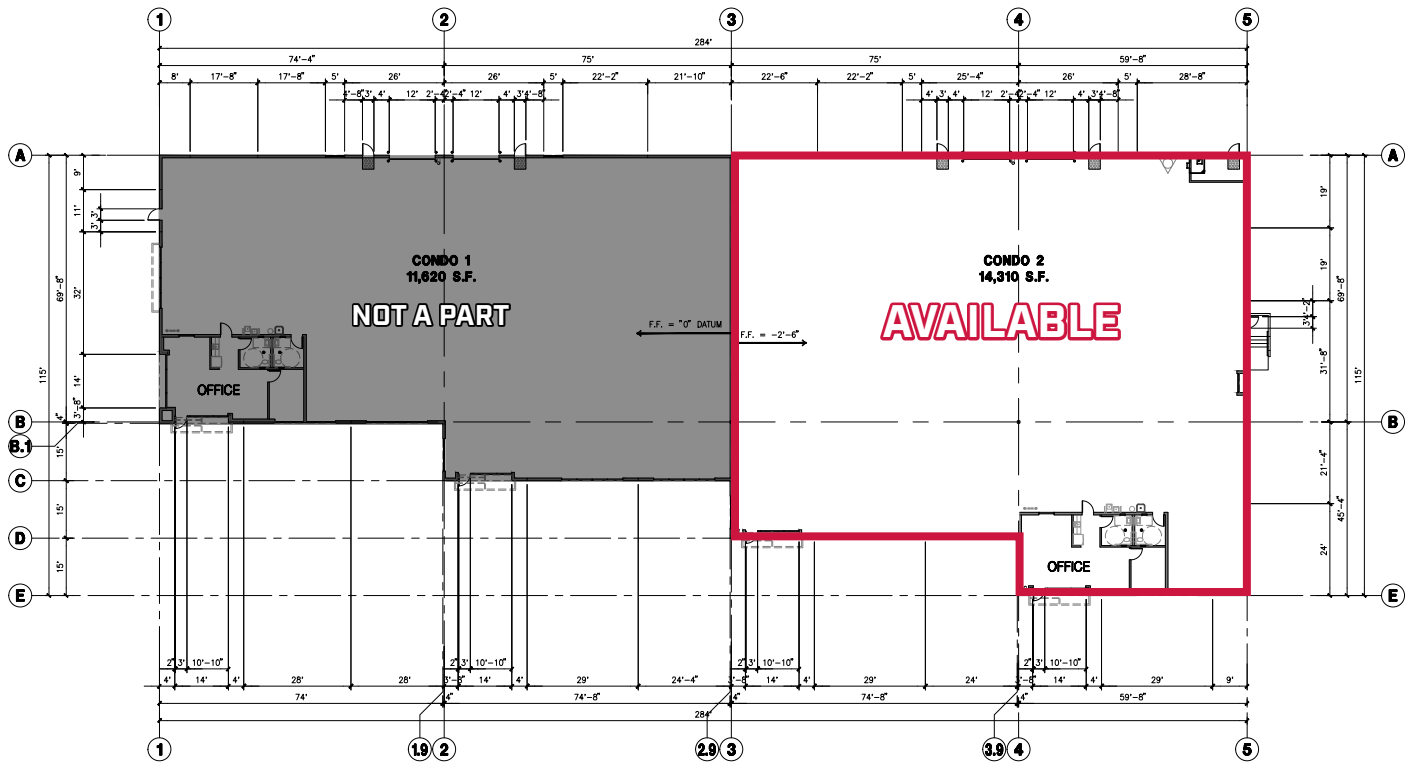
DONALD KAZANJIAN

909.373.2929 | DRE#: 00860886
DKAZANJIAN@LEE-ASSOC.COM

MS VAN BUREN II BUSINESS PARK

±14,310 SF WAREHOUSE AVAILABLE FOR LEASE (EXPANDABLE)

21840 Van Buren Blvd., Riverside, CA - Bldg. 1, Suite 103 & 104



R. MARIO CALVILLO

951.276.3657 | DRE#: 01911573
MCALVILLO@LEERIVERSIDE.COM

GARRY JENKINS

951.276.3621 | DRE#: 02008115
GJENKINS@LEERIVERSIDE.COM

DONALD KAZANJIAN

909.373.2929 | DRE#: 00860886
DKAZANJIAN@LEE-ASSOC.COM