

# FOR SALE/LEASE MS PRIME SIX BUSINESS PARK

DEVELOPED BY: SILAGI DEVELOPMENT  
& MANAGEMENT, INC. // 1.805.402.4515



**BUILDING 2 AVAILABLE | ±18,594 SF**



**VAN BUREN BLVD. & ECONOMIC DR., RIVERSIDE, CA**  
**5 Industrial/Showroom Buildings Totaling ±91,987 SF**

Please Contact:

[WWW.SILAGISOCAL.COM](http://WWW.SILAGISOCAL.COM)

 **LEE &  
ASSOCIATES**  
COMMERCIAL REAL ESTATE SERVICES

**R. MARIO CALVILLO**  
DRE#: 01911573 // 951.276.3657  
[MCALVILLO@LEERIVERSIDE.COM](mailto:MCALVILLO@LEERIVERSIDE.COM)

*No warranty or representation has been made to the accuracy of the foregoing information. Terms of sale or lease and availability are subject to change or withdrawal without notice. Lee & Associates Commercial Real Estate Services, Inc. - Riverside. 3240 Mission Inn Avenue, Riverside, CA 92507 | Corporate DRE#: 01048055*

# FOR SALE/LEASE MS PRIME SIX BUSINESS PARK

DEVELOPED BY: SILAGI DEVELOPMENT  
& MANAGEMENT, INC. // 1.805.402.4515



Van Buren Blvd

BULD. #	SF	SITE PLAN	FLOOR/OFFICE PLAN	STATUS
1	15,115		In Escrow	
2	<b>18,594</b>	<a href="#">View</a>	<a href="#">View</a>	<b>Available</b>
3	19,931		In Escrow	
4	22,036		In Escrow	
5	16,311		In Escrow	



Please Contact:

[WWW.SILAGISOCAL.COM](http://WWW.SILAGISOCAL.COM)



**R. MARIO CALVILLO**  
DRE#: 01911573 // 951.276.3657  
[MCALVILLO@LEERIVERSIDE.COM](mailto:MCALVILLO@LEERIVERSIDE.COM)

No warranty or representation has been made to the accuracy of the foregoing information. Terms of sale or lease and availability are subject to change or withdrawal without notice. Lee & Associates Commercial Real Estate Services, Inc. - Riverside. 3240 Mission Inn Avenue, Riverside, CA 92507 | Corporate DRE#: 01048055

# FOR SALE/LEASE

# MS PRIME SIX

# BUSINESS PARK

DEVELOPED BY: SILAGI DEVELOPMENT  
& MANAGEMENT, INC. // 1.805.402.4515



BUILDING #	1	2	3	4	5
Van Buren Blvd	21550	21650	21750	21700	21600
Total Building SF	15,115	18,594	19,931	22,036	16,311
Acres	IN ESCROW	1.18	IN ESCROW	IN ESCROW <sup>1</sup>	IN ESCROW <sup>2</sup>
Auto Parking	IN ESCROW	25	IN ESCROW	IN ESCROW	IN ESCROW
Zoning	MU/PE	MU	MU	MU	MU
Clear Height	IN ESCROW	24'	IN ESCROW	IN ESCROW	IN ESCROW
Power (AMPS) - 277/480 Volt (Expandable)	400	400	400	800	400
GL Doors (12'x14')	IN ESCROW Per Unit	1 Per Unit	IN ESCROW Per Unit	IN ESCROW Per Unit	IN ESCROW Per Unit
DH Doors (9'x10')	3 Per Unit	3 Per Unit	3 Per Unit	3 Per Unit	3 Per Unit
ESFR Sprinkler	Yes	Yes	Yes	Yes	Yes
Secured Yard	Yes	Yes	Yes	Yes	Yes

Please Contact:

[WWW.SILAGISOCAL.COM](http://WWW.SILAGISOCAL.COM)



**R. MARIO CALVILLO**  
DRE#: 01911573 // 951.276.3657  
MCALVILLO@LEERIVERSIDE.COM

No warranty or representation has been made to the accuracy of the foregoing information. Terms of sale or lease and availability are subject to change or withdrawal without notice. Lee & Associates Commercial Real Estate Services, Inc. - Riverside. 3240 Mission Inn Avenue, Riverside, CA 92507 | Corporate DRE#: 01048055

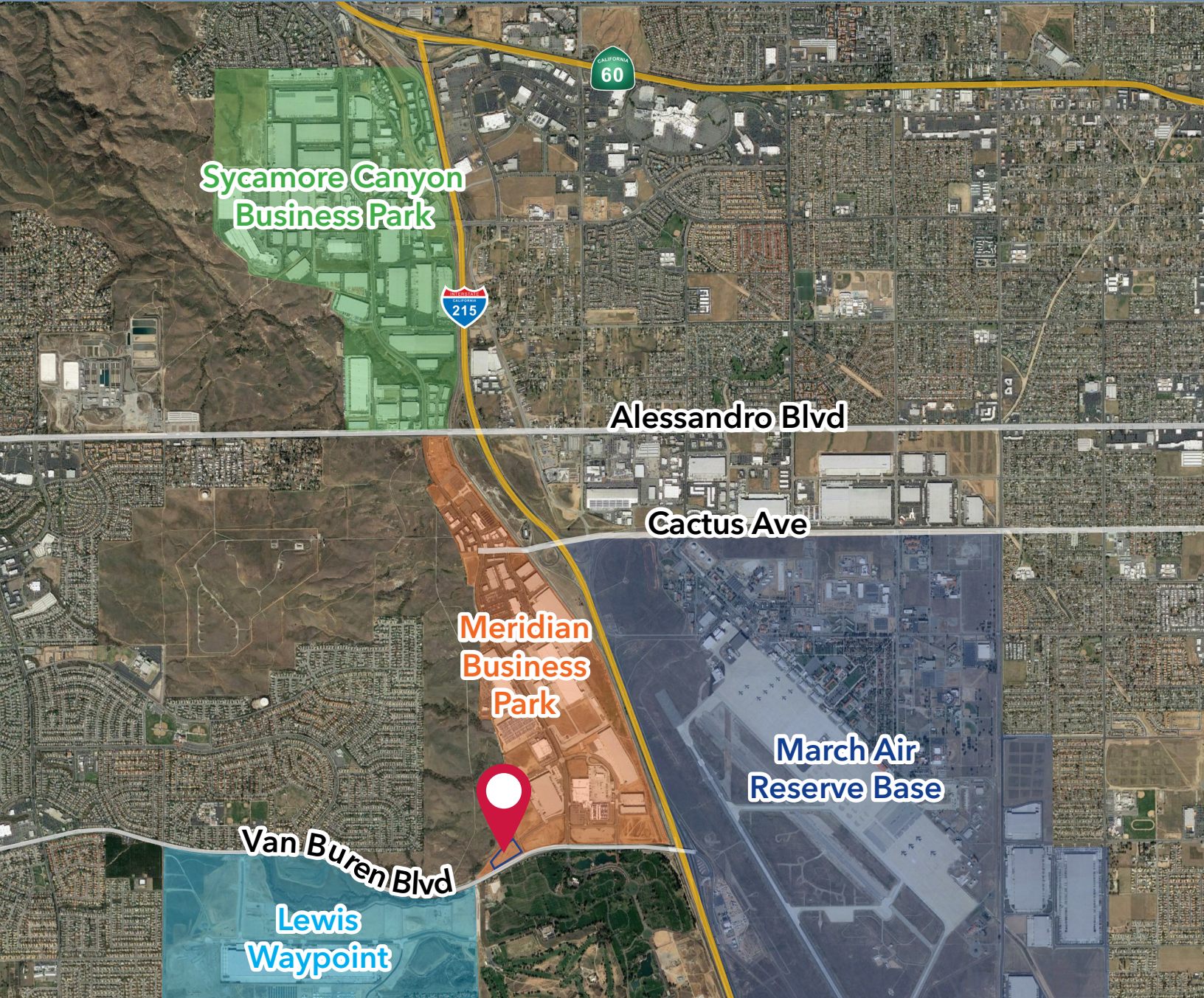
# FOR SALE/LEASE

# MS PRIME SIX

# BUSINESS PARK

DEVELOPED BY: SILAGI DEVELOPMENT  
& MANAGEMENT, INC. // 1.805.402.4515

SDM



Please Contact:

[WWW.SILAGISOCAL.COM](http://WWW.SILAGISOCAL.COM)

 **LEE &  
ASSOCIATES**  
COMMERCIAL REAL ESTATE SERVICES

**R. MARIO CALVILLO**  
DRE#: 01911573 // 951.276.3657  
[MCALVILLO@LEERIVERSIDE.COM](mailto:MCALVILLO@LEERIVERSIDE.COM)

*No warranty or representation has been made to the accuracy of the foregoing information. Terms of sale or lease and availability are subject to change or withdrawal without notice. Lee & Associates Commercial Real Estate Services, Inc. - Riverside. 3240 Mission Inn Avenue, Riverside, CA 92507 | Corporate DRE#: 01048055*