

JEFFERSON PLAZA CLASS A OFFICE FOR LEASE

27720 JEFFERSON AVENUE - TEMECULA, CA



**CLASS "A"
OFFICE FROM
\$1.50 PSF/MO**

PROPERTY HIGHLIGHTS:

- » Brand New, Highly Upgraded Lobby
- » ±40,000 SF Class A Office Building
- » Suites from ±947 - 9,114 SF
- » Class A Building Standards
- » Elevator Served
- » Many Offices Feature Balconies
- » Flexible Lease Terms
- » Waterscape Features
- » Easy Access to Interstate 15
- » Ample Parking
- » **From \$1.50 PSF!**



JIM NADAL, CCIM, SIOR • 951.445.4520 • jnadal@leetemecula.com • DRE #01040679

JEFFERSON PLAZA CLASS A OFFICE FOR LEASE

27720 JEFFERSON AVENUE - TEMECULA, CA

SUITE AVAILABILITY			
SUITE #	SIZE ±RSF	MINIMUM LEASE TERM	MONTHLY LEASE RATE
240	947	3 years	\$1,563 (\$1.65 PSF)
310	1,294	3 years	\$2,135 (\$1.65 PSF)
140	1,401	3 years	\$2,102 (\$1.50 PSF)
120	2,012	3 years	\$3,320 (\$1.65 PSF)
120/140	3,413	5 years	\$5,324 (\$1.56 PSF)
400	9,114	10 years	\$15,494 (\$1.70 PSF)

5% annual increases.

All rental rates are quoted based upon a Modified Gross Lease form.

Rental rates are subject to change at the Owner's sole discretion.

Rev. 02/21/2020



JIM NADAL, CCIM, SIOR • 951.445.4520 • jnadal@leetemecula.com • DRE #01040679

No warranty or representation has been made to the accuracy of the foregoing information. Terms of sale or lease and availability are subject to change or withdrawal without notice.

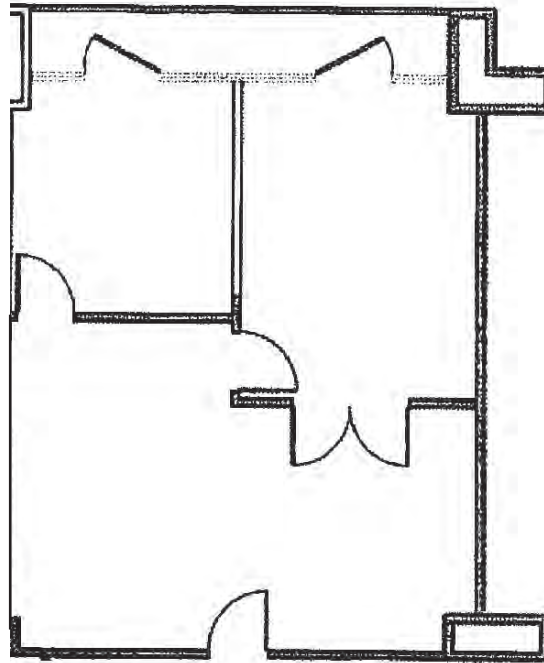
Lee & Associates Commercial Real Estate Services, Inc. - Riverside. 25240 Hancock Avenue, Suite 100 - Murrieta, CA 92562 | Corporate ID# 01048055

JEFFERSON PLAZA

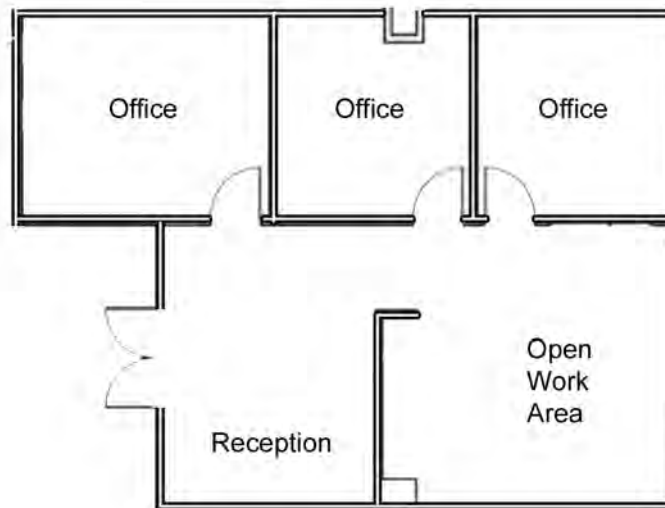
CLASS A OFFICE FOR LEASE

27720 JEFFERSON AVENUE - TEMECULA, CA

Suite 240
947 SF



Suite 310
1,294 SF

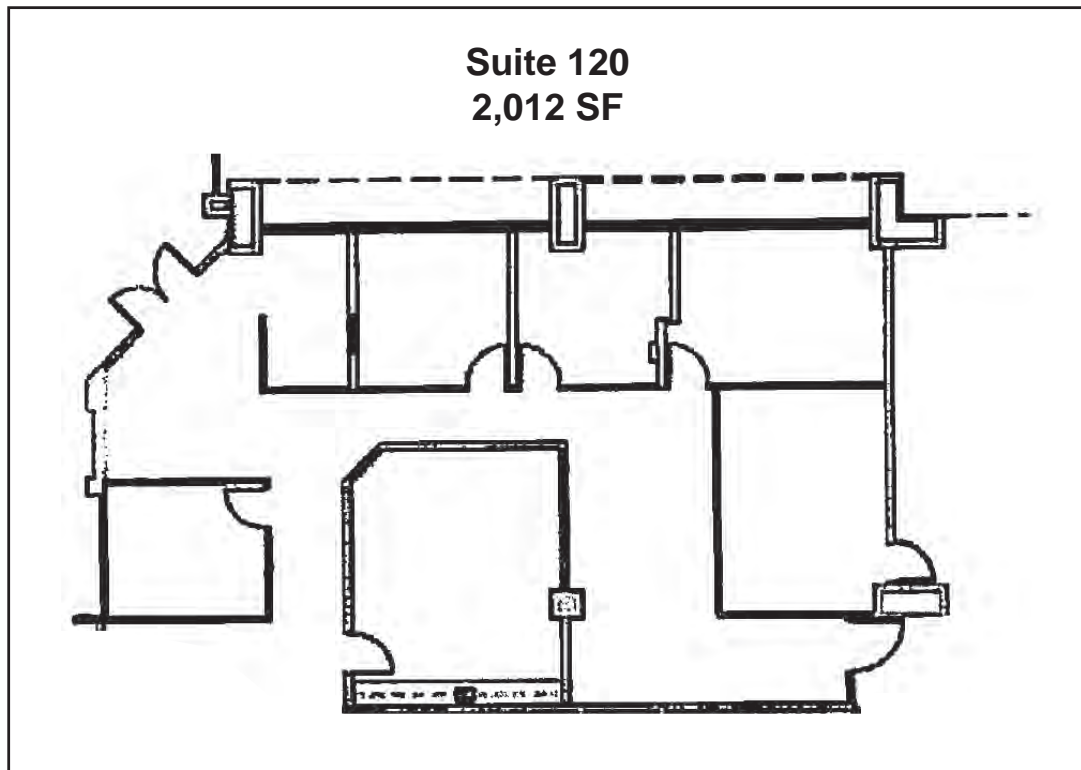
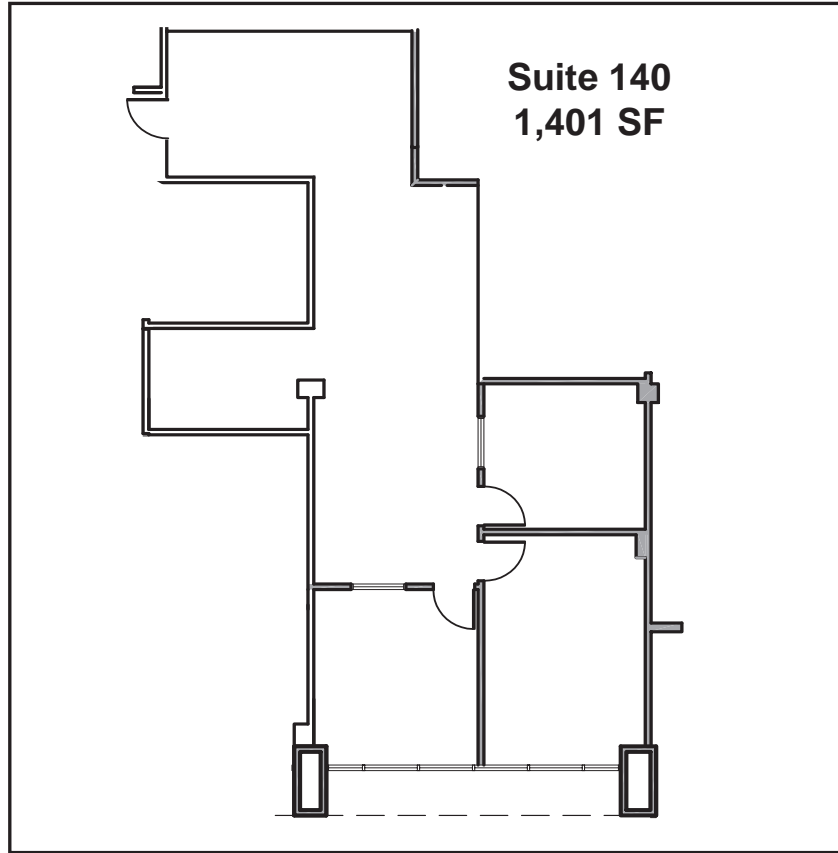


JIM NADAL, CCIM, SIOR • 951.445.4520 • jnadal@leetemecula.com • DRE #01040679

JEFFERSON PLAZA

CLASS A OFFICE FOR LEASE

27720 JEFFERSON AVENUE - TEMECULA, CA



JIM NADAL, CCIM, SIOR • 951.445.4520 • jnadal@leetemecula.com • DRE #01040679

No warranty or representation has been made to the accuracy of the foregoing information. Terms of sale or lease and availability are subject to change or withdrawal without notice.

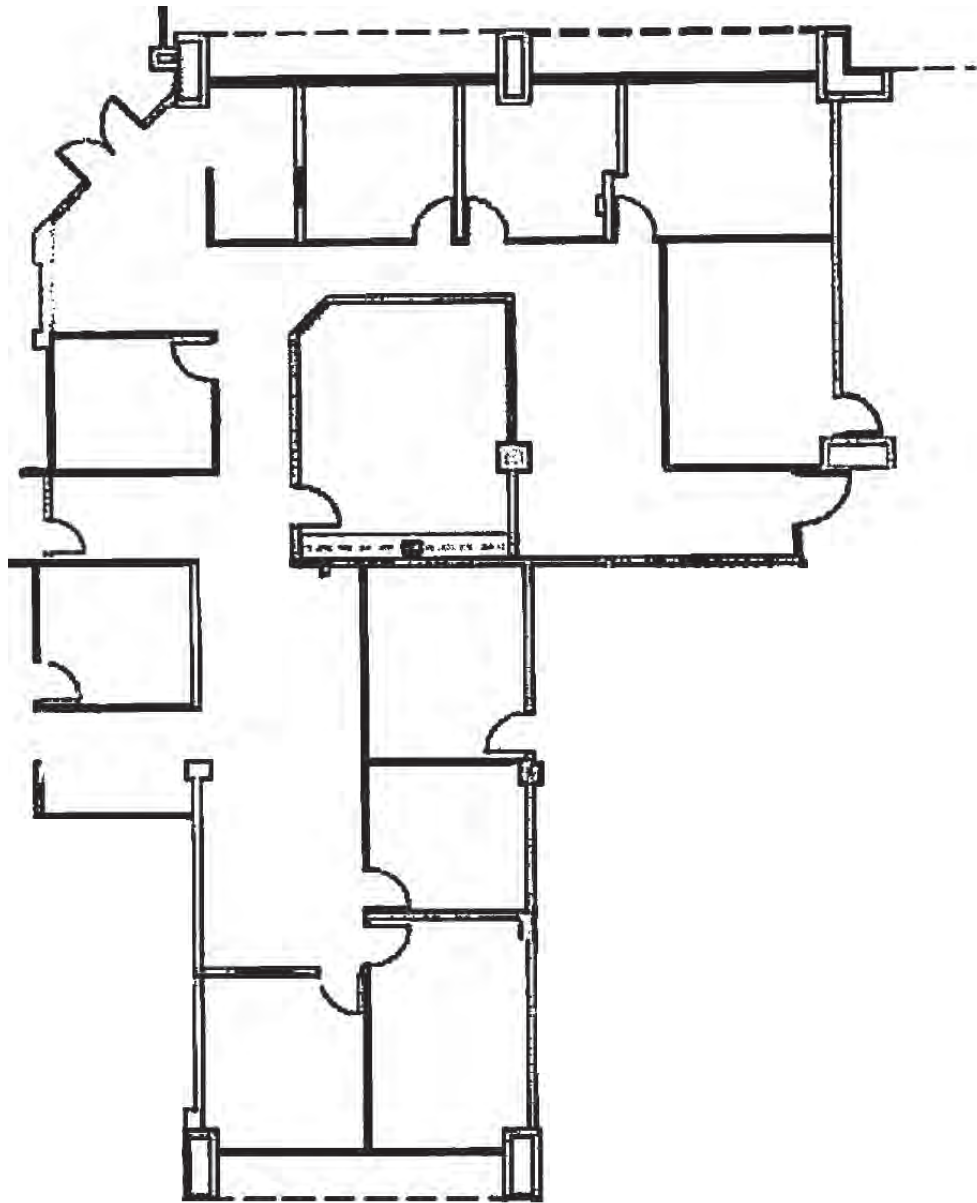
Lee & Associates Commercial Real Estate Services, Inc. - Riverside. 25240 Hancock Avenue, Suite 100 - Murrieta, CA 92562 | Corporate ID# 01048055

JEFFERSON PLAZA

CLASS A OFFICE FOR LEASE

27720 JEFFERSON AVENUE - TEMECULA, CA

Suite 120/140
3,413 SF



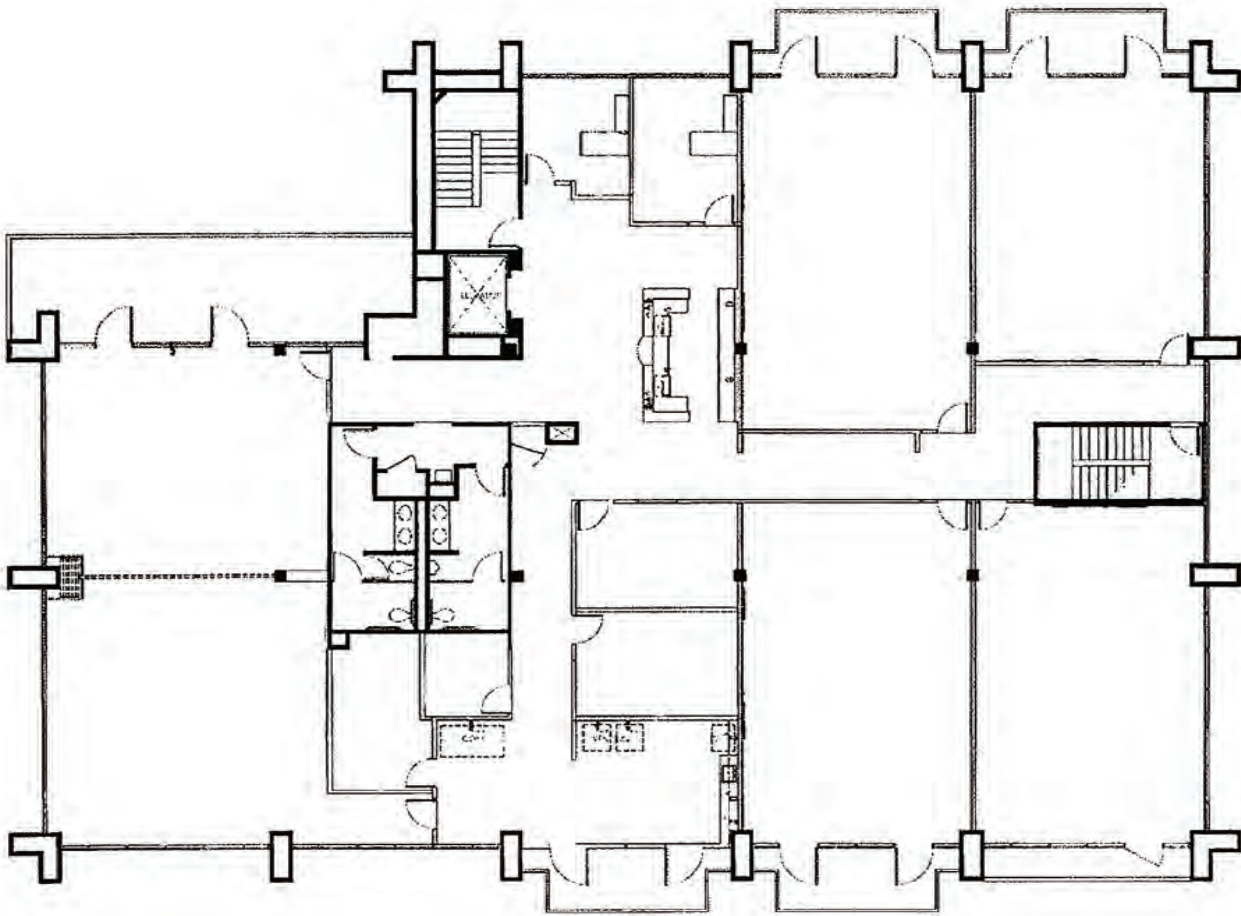
JIM NADAL, CCIM, SIOR • 951.445.4520 • jnadal@leetemecula.com • DRE #01040679

JEFFERSON PLAZA

CLASS A OFFICE FOR LEASE

27720 JEFFERSON AVENUE - TEMECULA, CA

Suite 400
9,114 SF



JIM NADAL, CCIM, SIOR • 951.445.4520 • jnadal@leetemecula.com • DRE #01040679