

VAIL RANCH : ESTABLISHED RETAIL STRIP

FOR LEASE: ±3,986 SF SPACE AVAILABLE

33195 Temecula Pkwy, Suite A, Temecula, CA 92592



JOIN



PROPERTY FEATURES

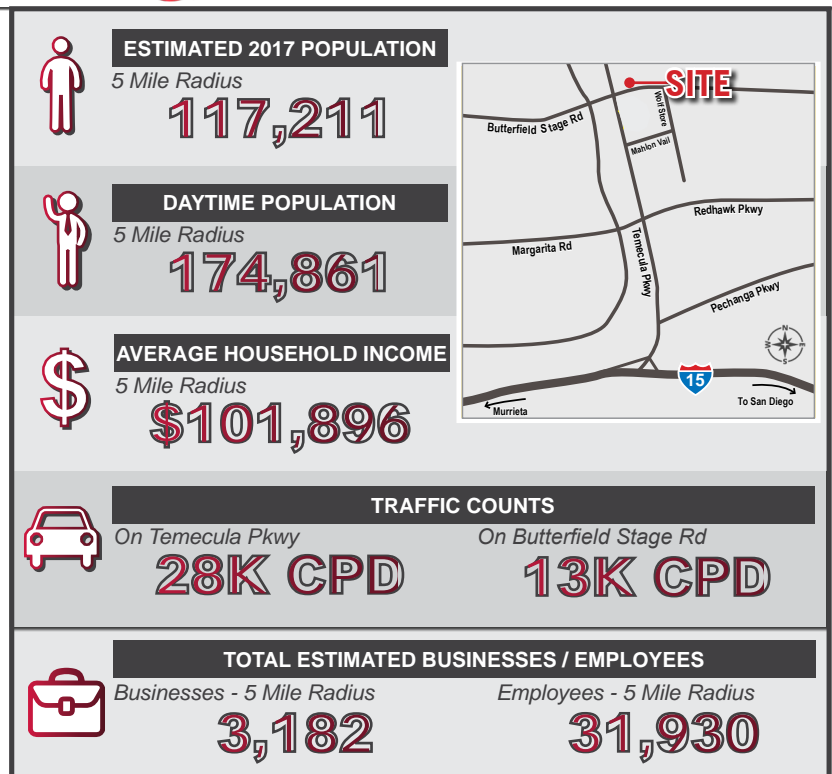
- Strong retail corridor, Vail Ranch, featuring national chain retailers: Ralphs, CVS, Starbucks, Best Buy, Pizza Hut, Carl's Jr., Cold Stone and Mobil
- High traffic count of 42,000 CPD on Temecula Pkwy. at Butterfield Stage Rd.
- Surrounded by one of the most dense neighborhoods in Temecula
- Anchored by an extremely high volume Ralph's Supermarket
- Less than 3 miles away from Pechanga Resort & Casino

Nick Corbell

jjennings@lee-associates.com
D 951.445.4522
DRE#: 01932821

Jay Nichols

jnichols@lee-associates.com
D 951.276.3656
DRE#: 01905191

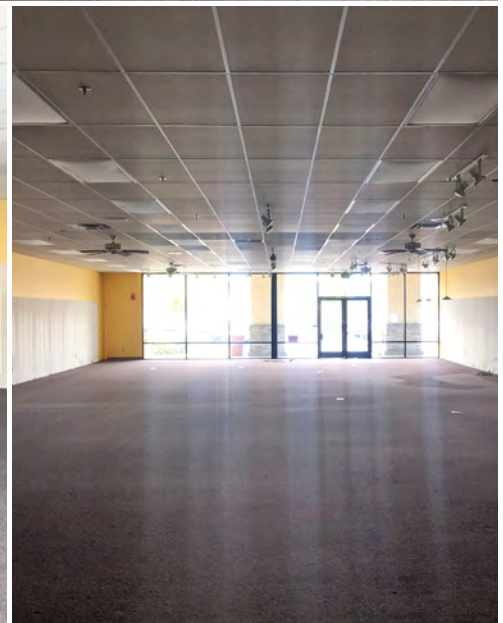


No warranty or representation has been made to the accuracy of the foregoing information. Terms of sale or lease and availability are subject to change or withdrawal without notice. Lee & Associates Commercial Real Estate Services, Inc. -Riverside.

VAIL RANCH : ESTABLISHED RETAIL STRIP

FOR LEASE: ±3,986 SF SPACE AVAILABLE

33195 Temecula Pkwy, Suite A, Temecula, CA 92592



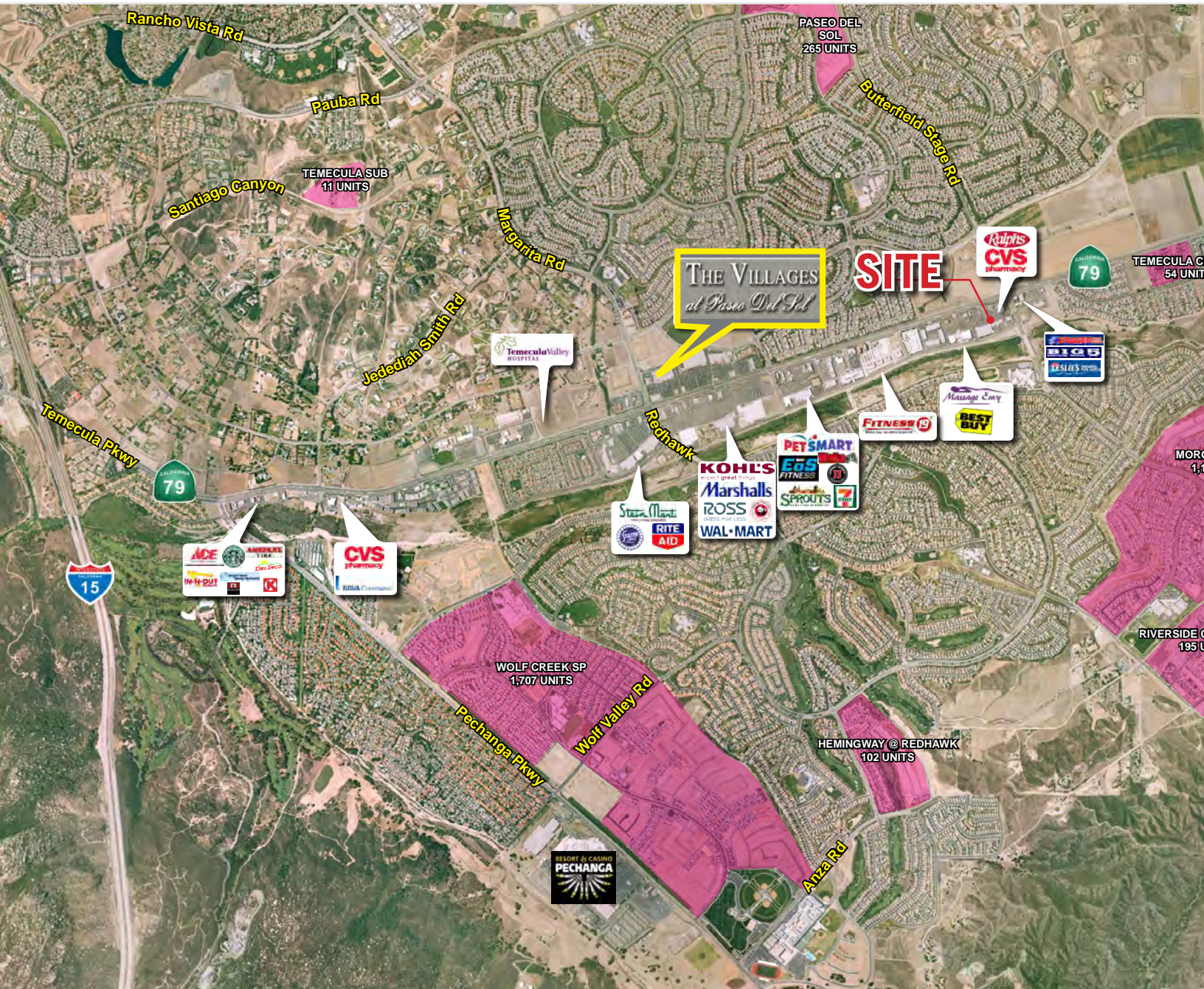
No warranty or representation has been made to the accuracy of the foregoing information. Terms of sale or lease and availability are subject to change or withdrawal without notice. Lee & Associates Commercial Real Estate Services, Inc. -Riverside.

VAIL RANCH : ESTABLISHED RETAIL STRIP

FOR LEASE: ±3,986 SF SPACE AVAILABLE

33195 Temecula Pkwy, Suite A, Temecula, CA 92592

TENANT AERIAL



Nick Corbell
jjennings@lee-associates.com
D 951.445.4522
DRE#: 01932821

Jay Nichols
jnichols@lee-associates.com
D 951.276.3656
DRE#: 01905191

No warranty or representation has been made to the accuracy of the foregoing information. Terms of sale or lease and availability are subject to change or withdrawal without notice. Lee & Associates Commercial Real Estate Services, Inc. -Riverside.