

OFFICE SUITES FOR LEASE

4730 Woodman Avenue, Sherman Oaks



FEATURES

- Modern Renovations
- Highly Improved Suites
- Easy Access to 405 & 101 Freeways
- Window Line Offices
- On-Site Property Management
- Parking Attendant

AVAILABLE

Suite	Size (SF)	Rate
375	2,403	\$2.45 FSG Available within 30 days

PARKING (2.5/1000)

Rate	Type
\$65	Per Car/Month

For more information please contact:

Jay Rubin
Principal
818.223.4385
jrubin@lee-re.com
JayRubin-RE.com
BRE# 01320005

Jennifer Donaldson
Principal
818.933.0347
jdonaldson@lee-re.com
lee-associates.com
BRE# 01317737

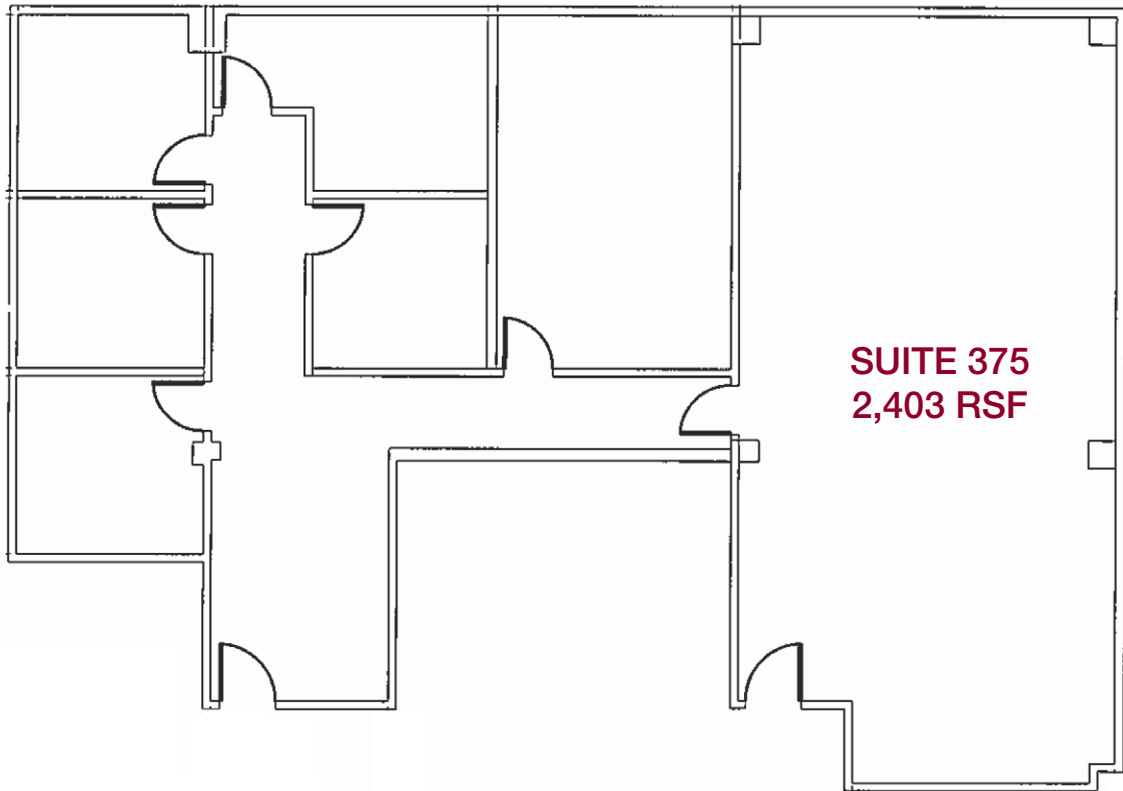


Lee & Associates® - LA North/Ventura, Inc. • Corporate ID #01191898
A Member of the Lee & Associates® Group of Companies
15250 Ventura Blvd., Suite 100 • Sherman Oaks, CA 91403
P:818.986.9800 F:818.933.0405 • www.lee-associates.com

No warranty or representation is made to the accuracy of the foregoing information. Terms of sale or lease and availability are subject to change or withdrawal without notice.

OFFICE SUITES FOR LEASE

4730 Woodman Avenue, Sherman Oaks



NOT TO SCALE

For more information please contact:

Jay Rubin
Principal
818.223.4385
jrubin@lee-re.com
JayRubin-RE.com
BRE# 01320005

Jennifer Donaldson
Principal
818.933.0347
jdonaldson@lee-re.com
lee-associates.com
BRE# 01317737

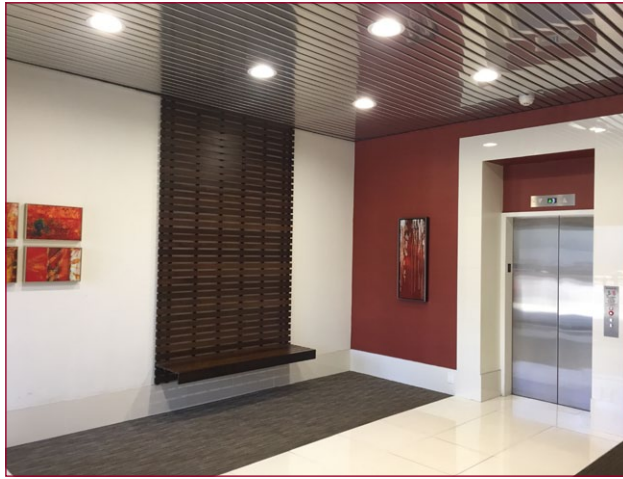


Lee & Associates® - LA NorthVentura, Inc. • Corporate ID #01191898
A Member of the Lee & Associates® Group of Companies
15250 Ventura Blvd., Suite 100 • Sherman Oaks, CA 91403
P:818.986.9800 F:818.933.0405 • www.lee-associates.com

No warranty or representation is made to the accuracy of the foregoing information. Terms of sale or lease and availability are subject to change or withdrawal without notice.

OFFICE SUITES FOR LEASE

4730 Woodman Avenue, Sherman Oaks



For more information please contact:

Jay Rubin
Principal
818.223.4385
jrubin@lee-re.com
JayRubin-RE.com
BRE# 01320005

Jennifer Donaldson
Principal
818.933.0347
jdonaldson@lee-re.com
lee-associates.com
BRE# 01317737



Lee & Associates® - LA NorthVentura, Inc. • Corporate ID #01191898
A Member of the Lee & Associates® Group of Companies
15250 Ventura Blvd., Suite 100 • Sherman Oaks, CA 91403
P:818.986.9800 F:818.933.0405 • www.lee-associates.com

No warranty or representation is made to the accuracy of the foregoing information. Terms of sale or lease and availability are subject to change or withdrawal without notice.

OFFICE SUITES FOR LEASE

4730 Woodman Avenue, Sherman Oaks



For more information please contact:

Jay Rubin
Principal
818.223.4385
jrubin@lee-re.com
JayRubin-RE.com
BRE# 01320005

Jennifer Donaldson
Principal
818.933.0347
jdonaldson@lee-re.com
lee-associates.com
BRE# 01317737



Lee & Associates® - LA North/Ventura, Inc. • Corporate ID #01191898
A Member of the Lee & Associates® Group of Companies
15250 Ventura Blvd., Suite 100 • Sherman Oaks, CA 91403
P:818.986.9800 F:818.933.0405 • www.lee-associates.com

No warranty or representation is made to the accuracy of the foregoing information. Terms of sale or lease and availability are subject to change or withdrawal without notice.