

PROFESSIONAL MEDICAL OR OFFICE SPACE FOR LEASE

AMADOR PROFESSIONAL CENTER

813-817 COURT STREET, JACKSON, CA

LISTING DATA

AVAILABLE SUITES:

813 Court Street

Suite 1: 1,518± SF

Suite 3: 1,674± SF

815 Court Street

Suite 6: 1,512± SF

817 Court Street

Suite 8: 2,053± SF

COMMENTS:

- Situated at intersection of Highway 88 and Court St.
- Across from Sutter Amador Hospital
- Parking adjacent to all suites at both levels
- Attractive and well maintained project
- Special rates for non-profits

ECONOMIC DATA

LEASE RATE: \$1.55/square foot, Modified Gross
Tenant Improvement Funds Available



CONTACT

Wendy Coddington, SIOR
BRE #00592566
wcoddington@lee-associates.com
D 209.983.6830

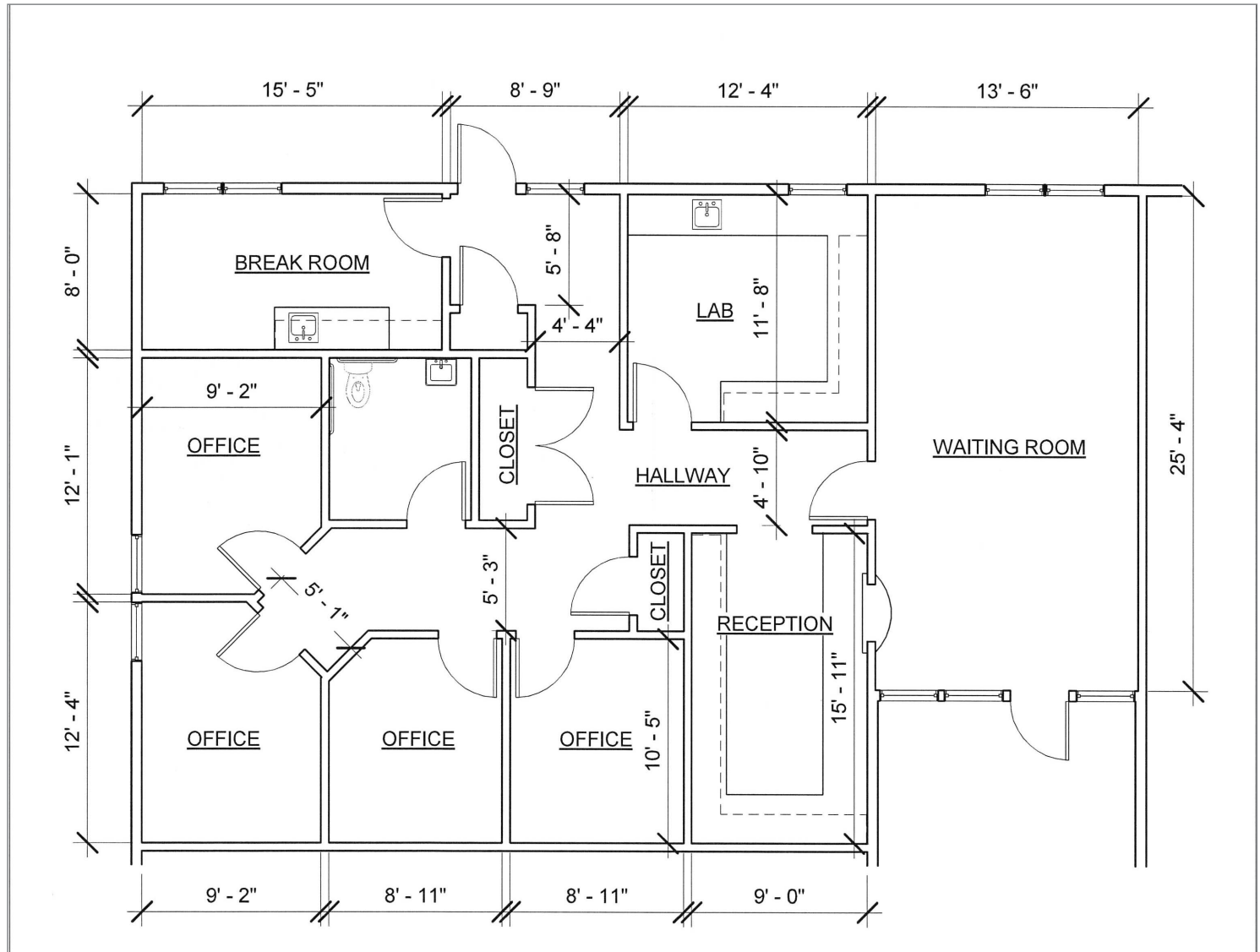
All information furnished regarding property for sale, rental or financing is from sources deemed reliable, but no warranty or representation is made to the accuracy thereof and same is submitted to errors, omissions, change of price, rental or other conditions prior to sale, lease or financing or withdrawal without notice. No liability of any kind is to be imposed on the broker herein.

PROFESSIONAL MEDICAL OR OFFICE SPACE FOR LEASE

AMADOR PROFESSIONAL CENTER

813-817 COURT STREET, JACKSON, CA

FLOOR PLAN- UNIT 813, SUITE 3

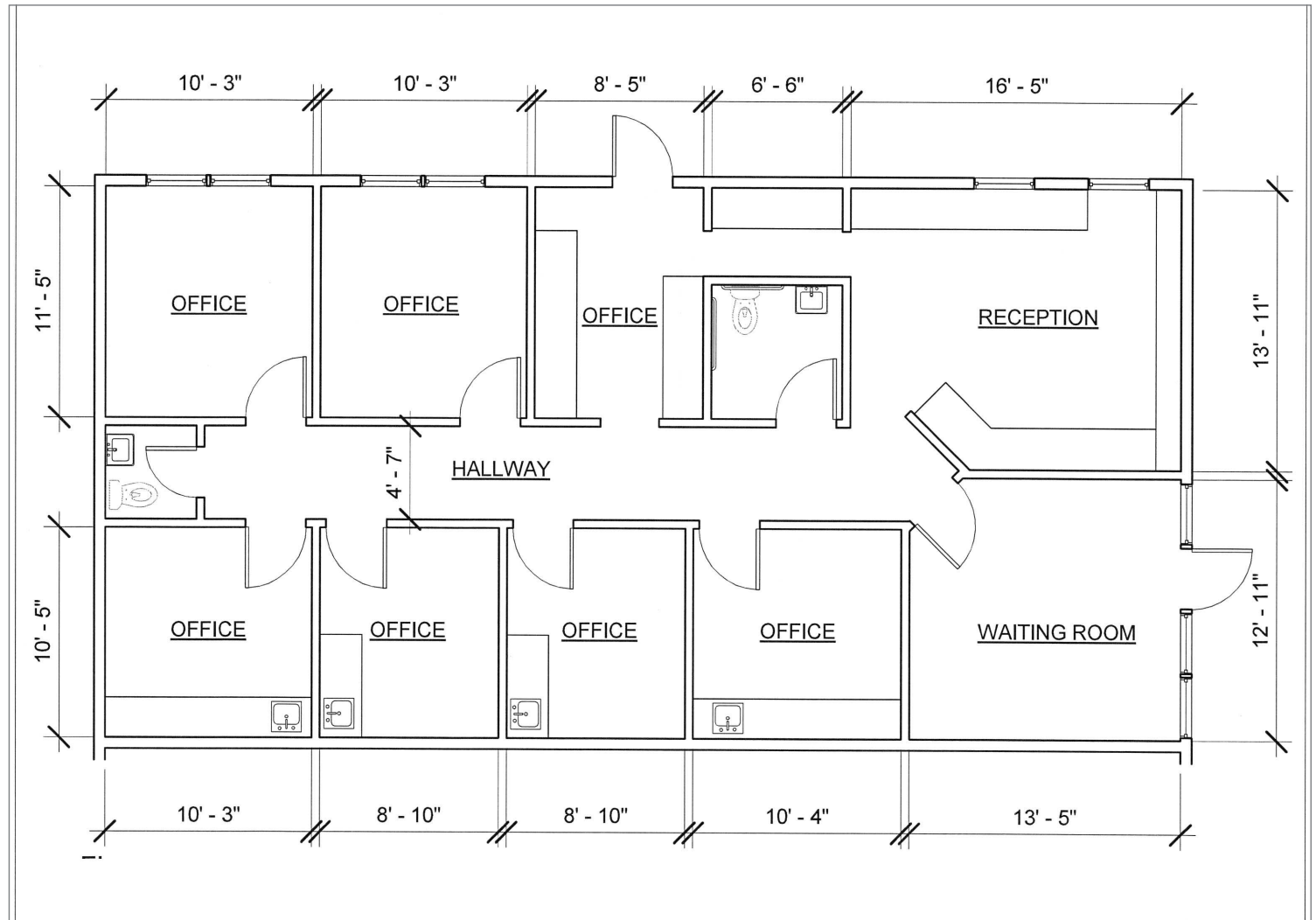


Wendy Coddington, SIOR
BRE #00592566
wcoddington@lee-associates.com
D 209.983.6830

All information furnished regarding property for sale, rental or financing is from sources deemed reliable, but no warranty or representation is made to the accuracy thereof and same is submitted to errors, omissions, change of price, rental or other conditions prior to sale, lease or financing or withdrawal without notice. No liability of any kind is to be imposed on the broker herein.

PROFESSIONAL MEDICAL OR OFFICE SPACE FOR LEASE
AMADOR PROFESSIONAL CENTER
813-817 COURT STREET, JACKSON, CA

FLOOR PLAN-
UNIT 815, SUITE 6

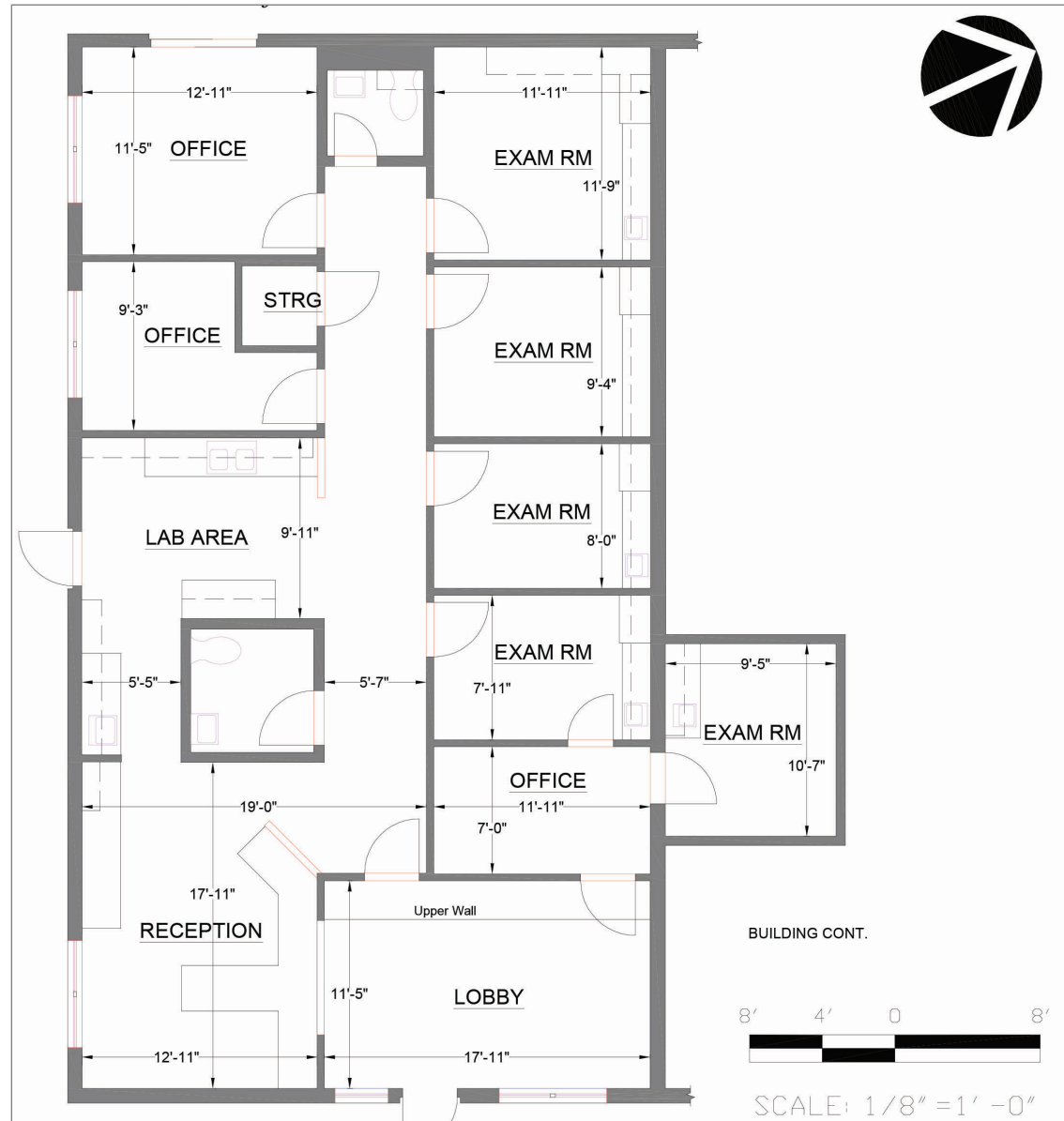


Wendy Coddington, SIOR
BRE #00592566
wcoddington@lee-associates.com
D 209.983.6830

All information furnished regarding property for sale, rental or financing is from sources deemed reliable, but no warranty or representation is made to the accuracy thereof and same is submitted to errors, omissions, change of price, rental or other conditions prior to sale, lease or financing or withdrawal without notice. No liability of any kind is to be imposed on the broker herein.

PROFESSIONAL MEDICAL OR OFFICE SPACE FOR LEASE
AMADOR PROFESSIONAL CENTER
813-817 COURT STREET, JACKSON, CA

FLOOR PLAN-
UNIT 817, SUITE 8



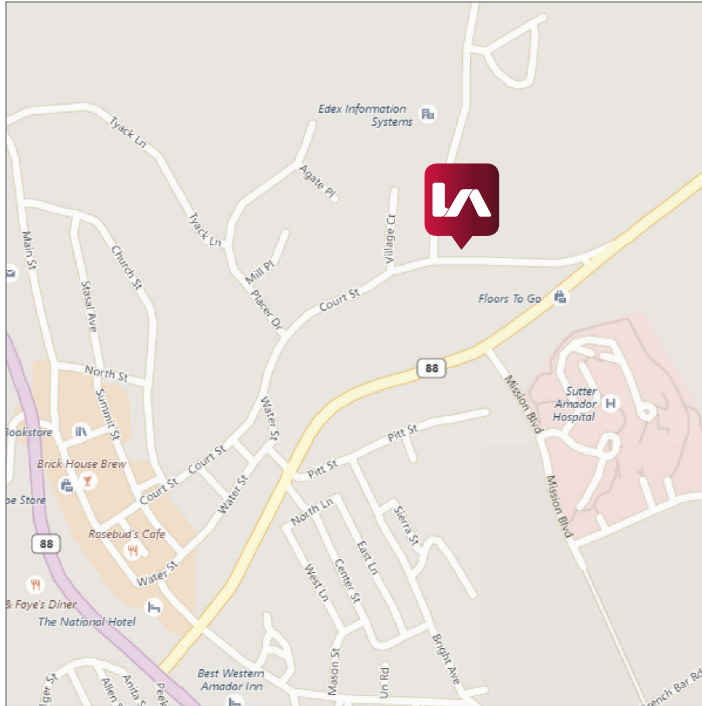
Wendy Coddington, SIOR
BRE #00592566
wcoddington@lee-associates.com
D 209.983.6830

All information furnished regarding property for sale, rental or financing is from sources deemed reliable, but no warranty or representation is made to the accuracy thereof and same is submitted to errors, omissions, change of price, rental or other conditions prior to sale, lease or financing or withdrawal without notice. No liability of any kind is to be imposed on the broker herein.

PROFESSIONAL MEDICAL OR OFFICE SPACE FOR LEASE

AMADOR PROFESSIONAL CENTER

813-817 COURT STREET, JACKSON, CA



Wendy Coddington, SIOR
BRE #00592566
wcoddington@lee-associates.com
D 209.983.6830

All information furnished regarding property for sale, rental or financing is from sources deemed reliable, but no warranty or representation is made to the accuracy thereof and same is submitted to errors, omissions, change of price, rental or other conditions prior to sale, lease or financing or withdrawal without notice. No liability of any kind is to be imposed on the broker herein.