

## 18401 QUEIROLO ROAD, LATHROP, CA



**LEE &  
ASSOCIATES**

COMMERCIAL REAL ESTATE SERVICES

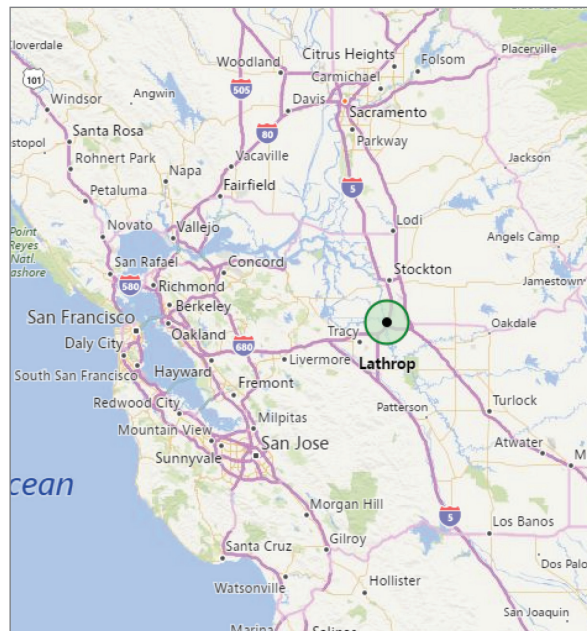


## LISTING DATA

**PARCEL SIZE:** 22.55± AC  
**APN:** 241-020-63  
**ZONED:** RM-MV, Medium Density Residential

## FEATURES:

- Previously considered for 64 lot residential development
- Adjacent to proposed new 240± unit apartment project planning to commence construction in 2018
- Located in rapidly growing South Lathrop area adjacent to San Joaquin River and River Islands (total buildout up to 11,000 residences)



**Mark J. Reckers, SIOR**

BRE #00938704

mreckers@lee-associates.com

D 209.983.6838

Wendy Coddington, SIOR

BRE #00592566

wcoddington@lee-associates.com

D 209.983.6830

All information furnished regarding property for sale, rental or financing is from sources deemed reliable, but no warranty or representation is made to the accuracy thereof and same is submitted to errors, omissions, change of price, rental or other conditions prior to sale, lease or financing or withdrawal without notice. No liability of any kind is to be imposed on the broker herein.

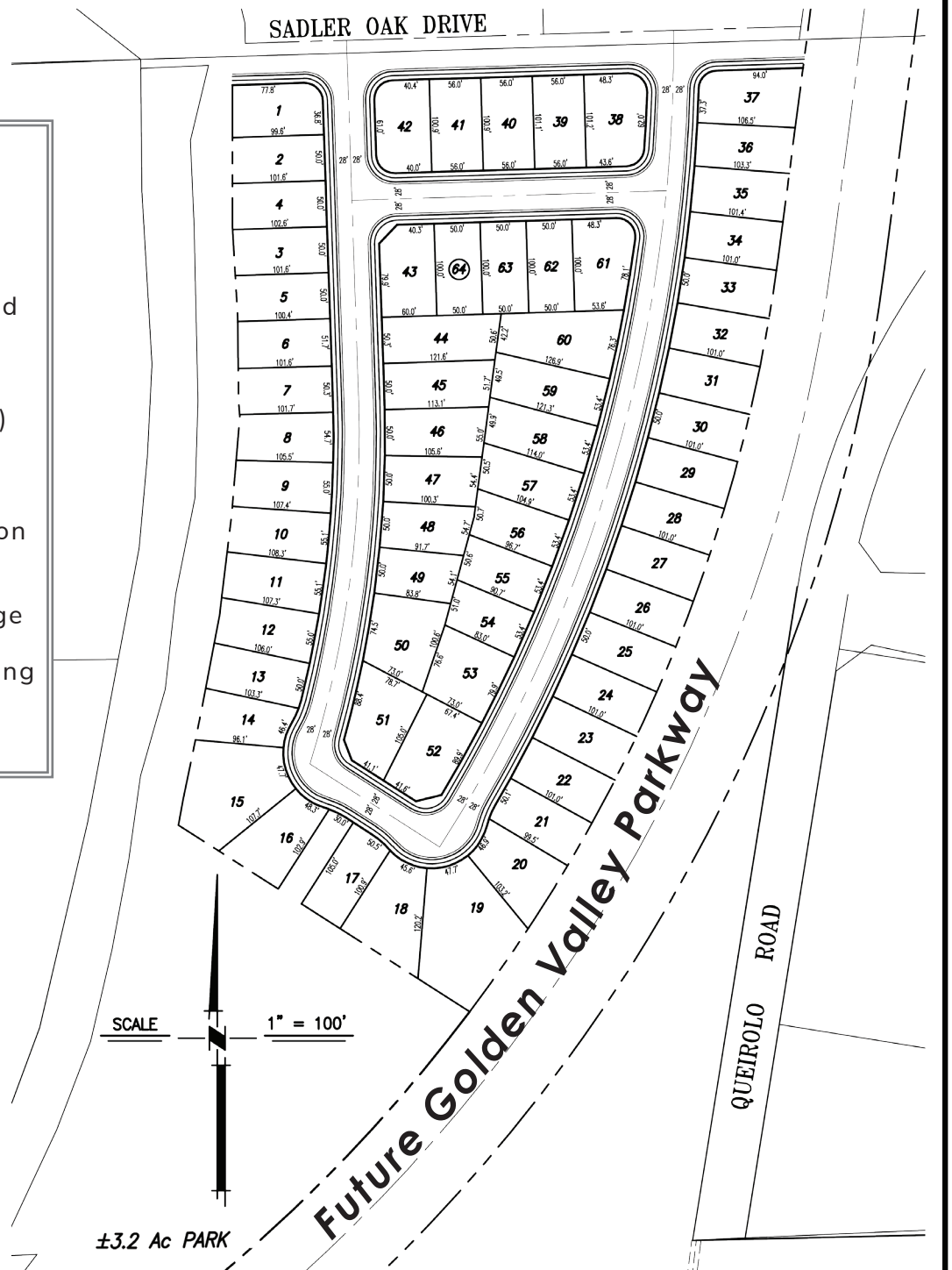


# RESIDENTIAL DEVELOPMENT LAND

## 22.55± AC FOR SALE

18401 QUEIROLO ROAD, LATHROP, CA

- Conceptual 64 lot subdivision
- Project may include dedication of Park and Roadway
- Utilities and Golden Valley Parkway (GVP) are planned to be extended to new 240± unit apartment contiguous to North on Sadler Oak Drive
- Future GVP and bridge to River Islands is undergoing engineering review



**Mark J. Reckers, SIOR**  
BRE #00938704  
mreckers@lee-associates.com  
D 209.983.6838

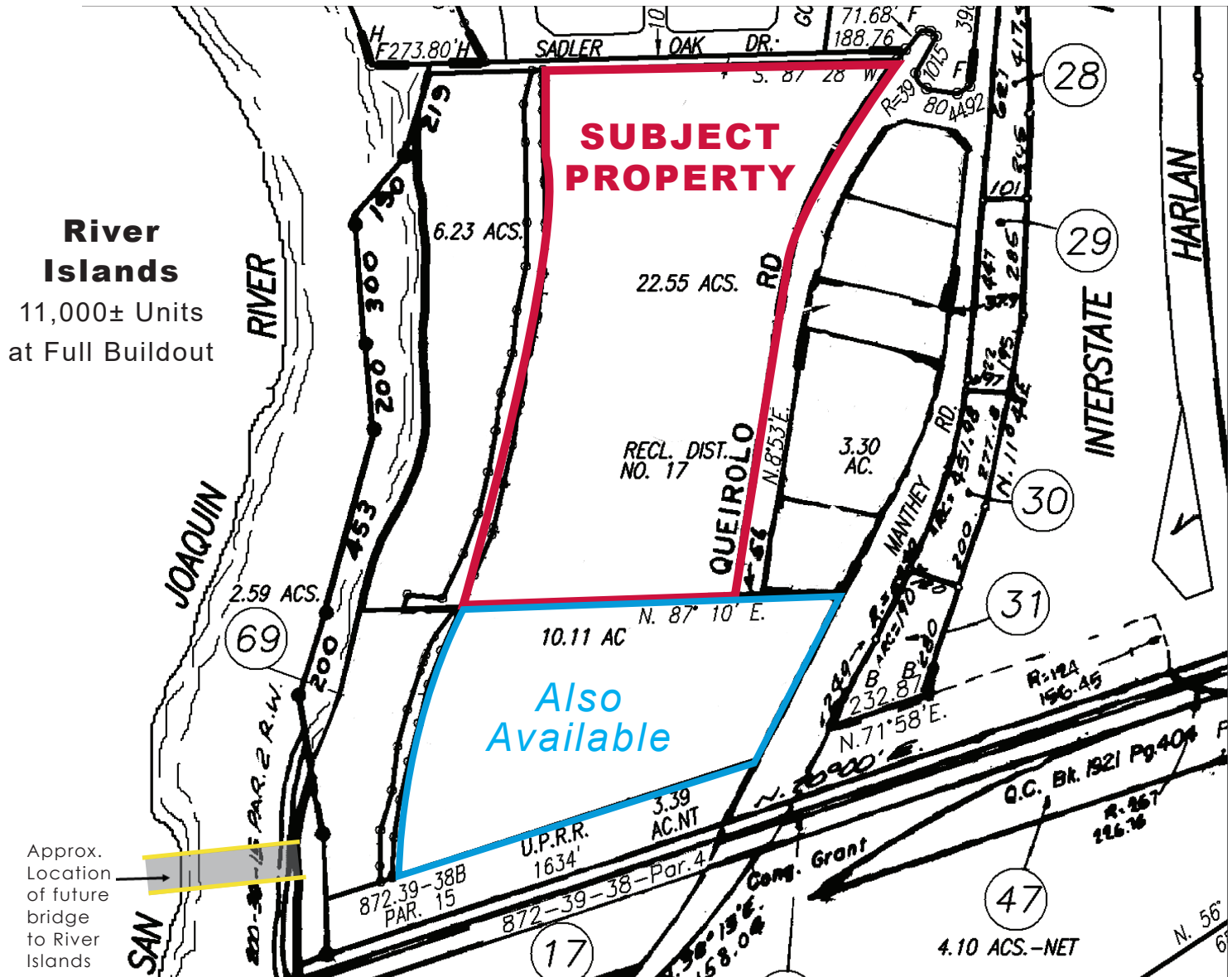
**Wendy Coddington, SIOR**  
BRE #00592566  
wcoddington@lee-associates.com  
D 209.983.6830

All information furnished regarding property for sale, rental or financing is from sources deemed reliable, but no warranty or representation is made to the accuracy thereof and same is submitted to errors, omissions, change of price, rental or other conditions prior to sale, lease or financing or withdrawal without notice. No liability of any kind is to be imposed on the broker herein.

# RESIDENTIAL DEVELOPMENT LAND

## 22.55± AC FOR SALE

18401 QUEIROLO ROAD, LATHROP, CA



**Mark J. Reckers, SIOR**  
BRE #00938704  
mreckers@lee-associates.com  
D 209.983.6838

**Wendy Coddington, SIOR**  
BRE #00592566  
wcoddington@lee-associates.com  
D 209.983.6830

All information furnished regarding property for sale, rental or financing is from sources deemed reliable, but no warranty or representation is made to the accuracy thereof and same is submitted to errors, omissions, change of price, rental or other conditions prior to sale, lease or financing or withdrawal without notice. No liability of any kind is to be imposed on the broker herein.