

FOR LEASE
PROFESSIONAL OFFICE SPACE
302 CHERRY LANE, MANTECA, CA



LISTING DATA

- Attractive two-story office building
- Suites 107/108 consists of 1,800± square feet
- Second story is serviced by a LULA elevator, a Light Use Limited Access unit for the handicap making the 2nd floor ADA compliant for general office use.
- Ample parking on-site with additional street parking available
- Well-maintained building with nice landscaping
- Located directly across from the DMV
- Close proximity to Manteca City Hall

LEASE RATE: **\$1.75 PSF, MG**



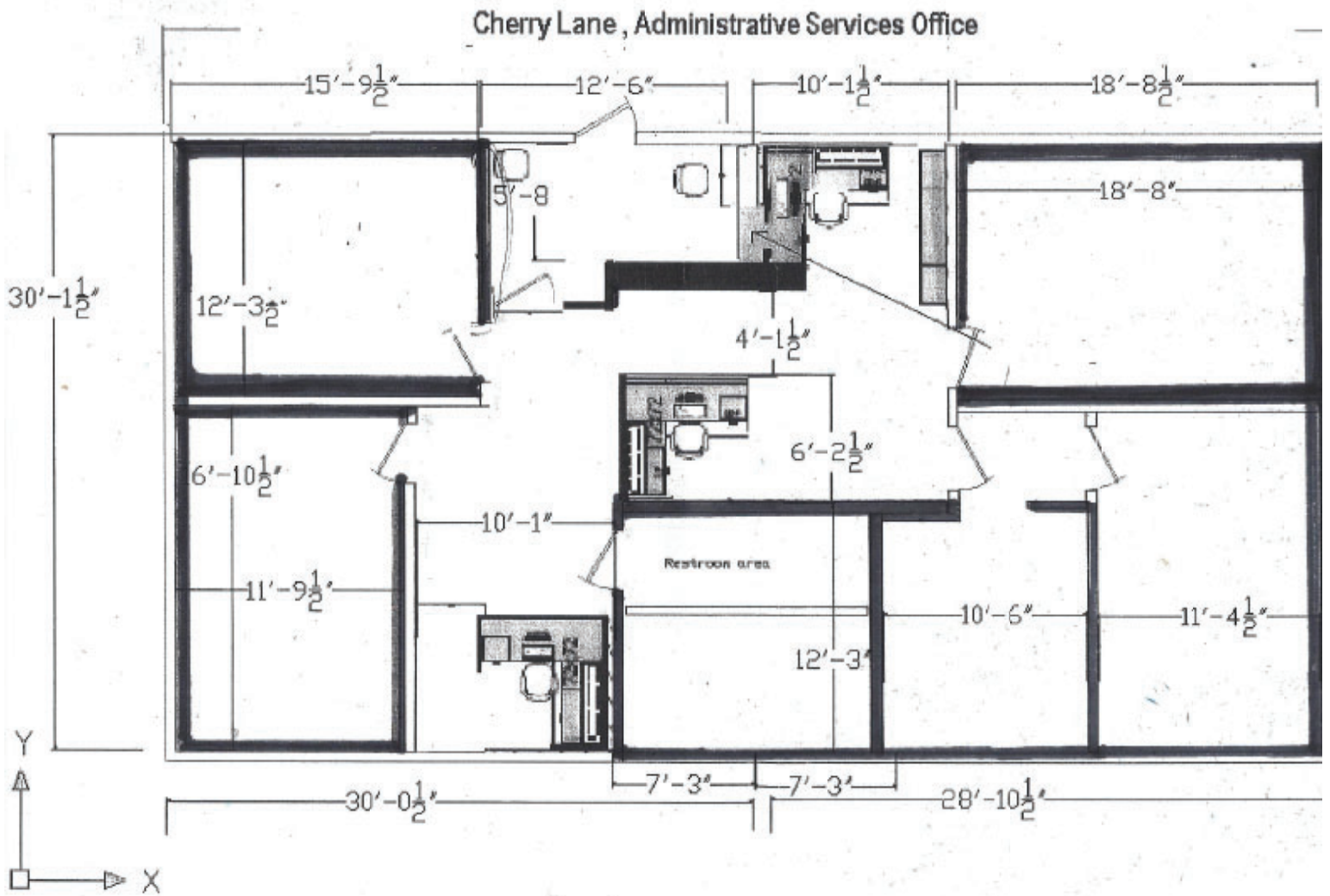
CONTACT:

Wendy Coddington, SIOR
BRE #00592566
wcoddington@lee-associates.com
D 209.983.6830

All information furnished regarding property for sale, rental or financing is from sources deemed reliable, but no warranty or representation is made to the accuracy thereof and same is submitted to errors, omissions, change of price, rental or other conditions prior to sale, lease or financing or withdrawal without notice. No liability of any kind is to be imposed on the broker herein.

FOR LEASE
PROFESSIONAL OFFICE SPACE
302 CHERRY LANE, MANTECA, CA

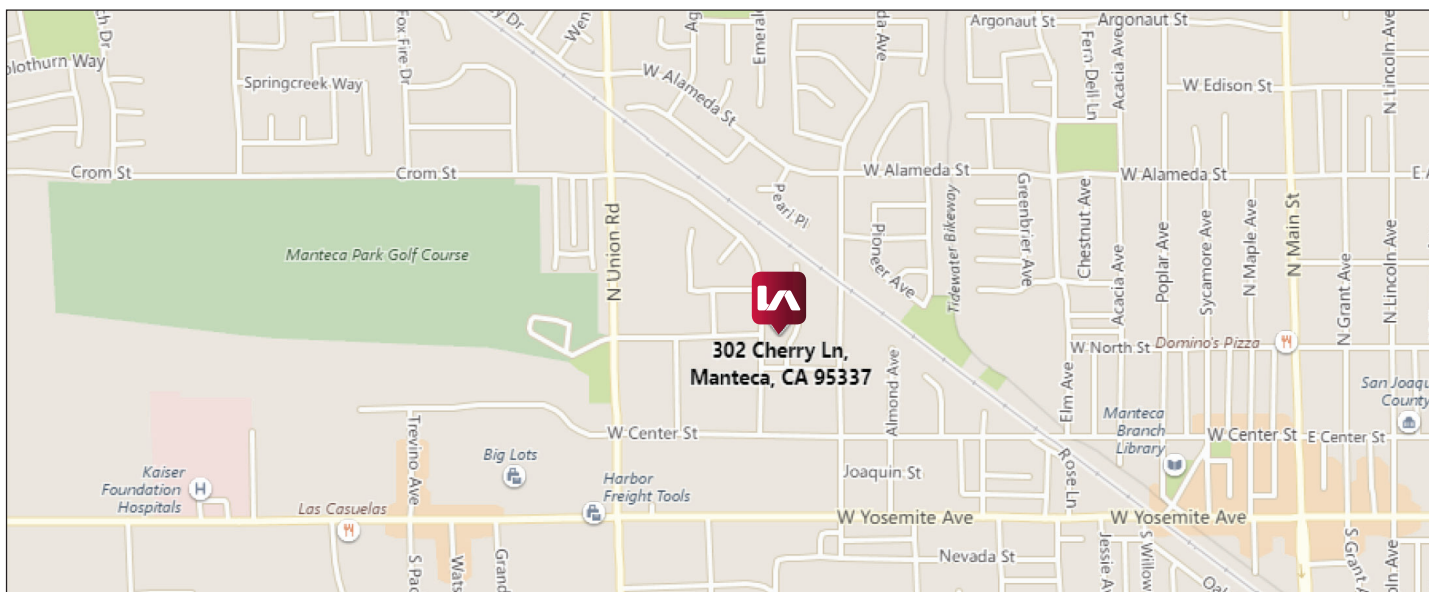
SITE PLAN



Wendy Coddington, SIOR
BRE #00592566
wcoddington@lee-associates.com
D 209.983.6830

All information furnished regarding property for sale, rental or financing is from sources deemed reliable, but no warranty or representation is made to the accuracy thereof and same is submitted to errors, omissions, change of price, rental or other conditions prior to sale, lease or financing or withdrawal without notice. No liability of any kind is to be imposed on the broker herein.

FOR LEASE
PROFESSIONAL OFFICE SPACE
302 CHERRY LANE, MANTECA, CA



Wendy Coddington, SIOR
BRE #00592566
wcoddington@lee-associates.com
D 209.983.6830

All information furnished regarding property for sale, rental or financing is from sources deemed reliable, but no warranty or representation is made to the accuracy thereof and same is submitted to errors, omissions, change of price, rental or other conditions prior to sale, lease or financing or withdrawal without notice. No liability of any kind is to be imposed on the broker herein.