

SMALL OFFICE SUITES FOR LEASE

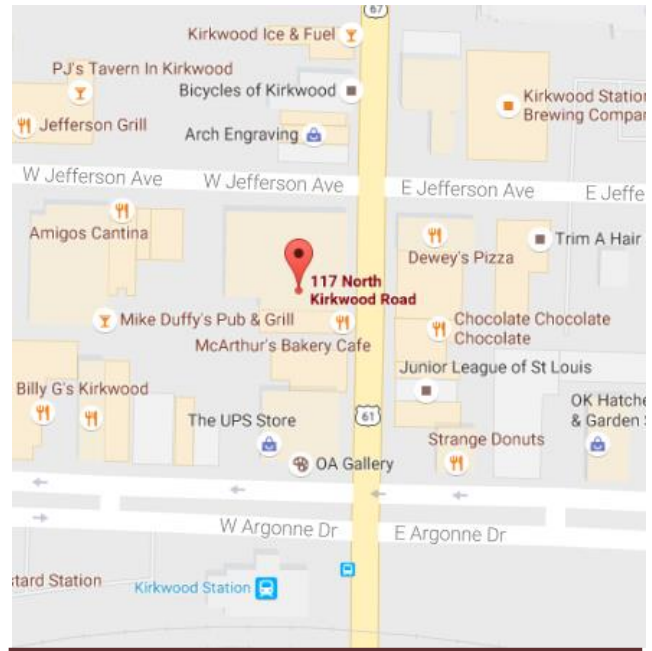
HALE BROWN BUILDING

117 N Kirkwood & 112 W Jefferson, Kirkwood, MO 63122



PROPERTY INFORMATION

- AVAILABLE SF:** Small Office Suites Available
- CORNER:** Highly Visible Corner of N Kirkwood Rd and W Jefferson
- LOCATION:** Historic Building Centrally Located in the Heart of Downtown Kirkwood
- AMENITIES:** Walking Distance from Numerous Restaurants and Shopping
- PARKING:** City Parking Lots and Free Street Parking Available
- NOTES:** Building Under New Ownership and Management. Extensive Interior Renovation Underway



David M. Zeigler, SIOR
dzeigler@lee-associates.com
D 314-400-4001
C 314-496-9023

Daniel B. Barnes
dbarnes@lee-associates.com
D 314-400-4004
C 314-422-4272

All information furnished regarding property for sale, rental or financing is from sources deemed reliable, but no warranty or representation is made to the accuracy thereof and same is submitted to errors, omissions, change of price, rental or other conditions prior to sale, lease or financing or withdrawal without notice. No liability of any kind is to be imposed on the broker herein.

SMALL OFFICE SUITES FOR LEASE

HALE BROWN BUILDING

117 N Kirkwood & 112 W Jefferson, Kirkwood, MO 63122



COMMERCIAL REAL ESTATE SERVICES

W JEFFERSON FRONTAGE

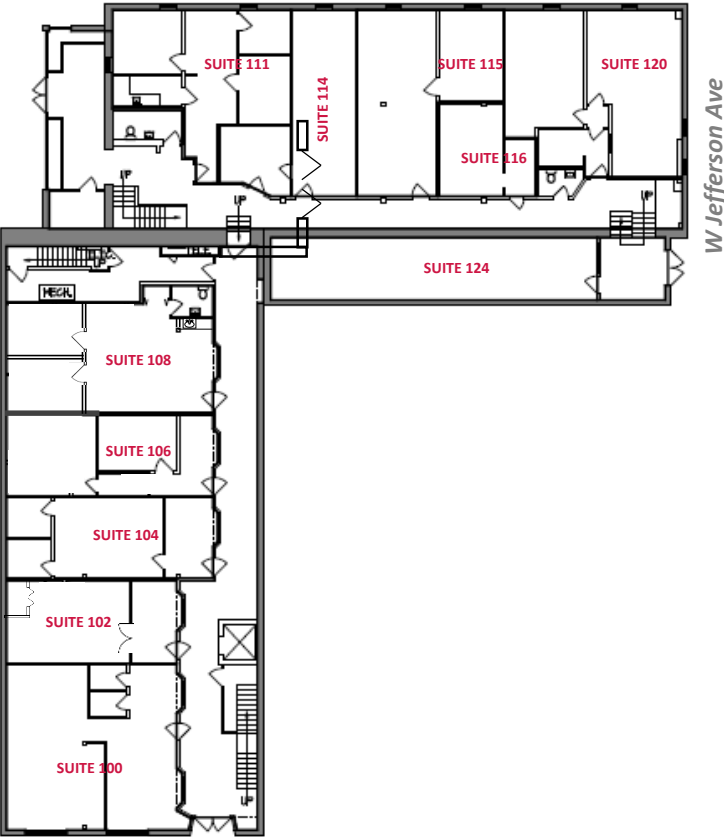


David M. Zeigler, SIOR
dzeigler@lee-associates.com
D 314-400-4001
C 314-496-9023

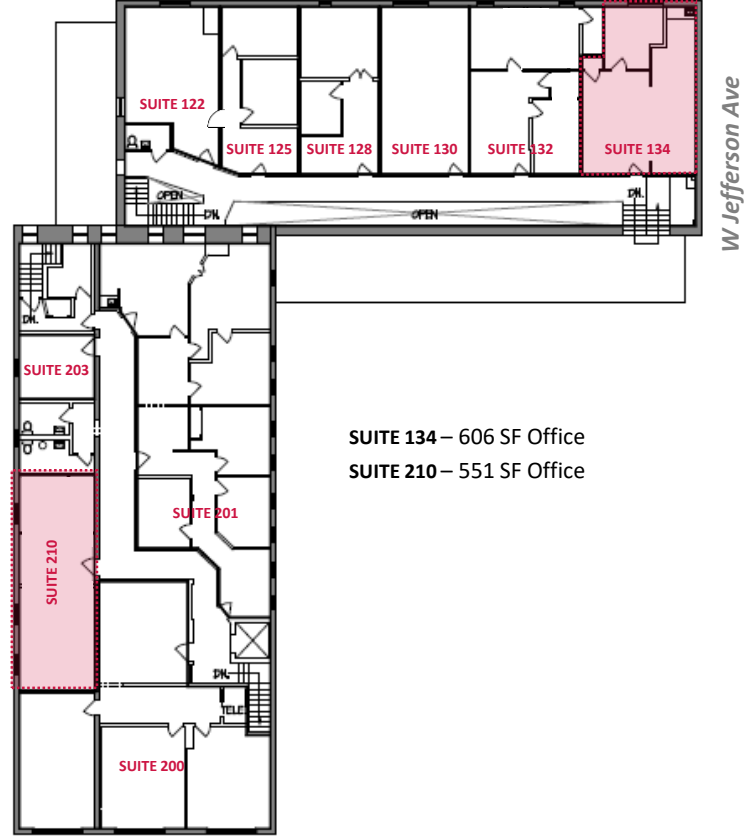
Daniel B. Barnes
dbarnes@lee-associates.com
D 314-400-4004
C 314-422-4272

All information furnished regarding property for sale, rental or financing is from sources deemed reliable, but no warranty or representation is made to the accuracy thereof and same is submitted to errors, omissions, change of price, rental or other conditions prior to sale, lease or financing or withdrawal without notice. No liability of any kind is to be imposed on the broker herein.

BUILDING LAYOUT – AVAILABLE SUITES



N Kirkwood Road



N Kirkwood Road

SUITE 134 – 606 SF Office
 SUITE 210 – 551 SF Office

FIRST FLOOR TENANT AREA

SECOND FLOOR TENANT AREA

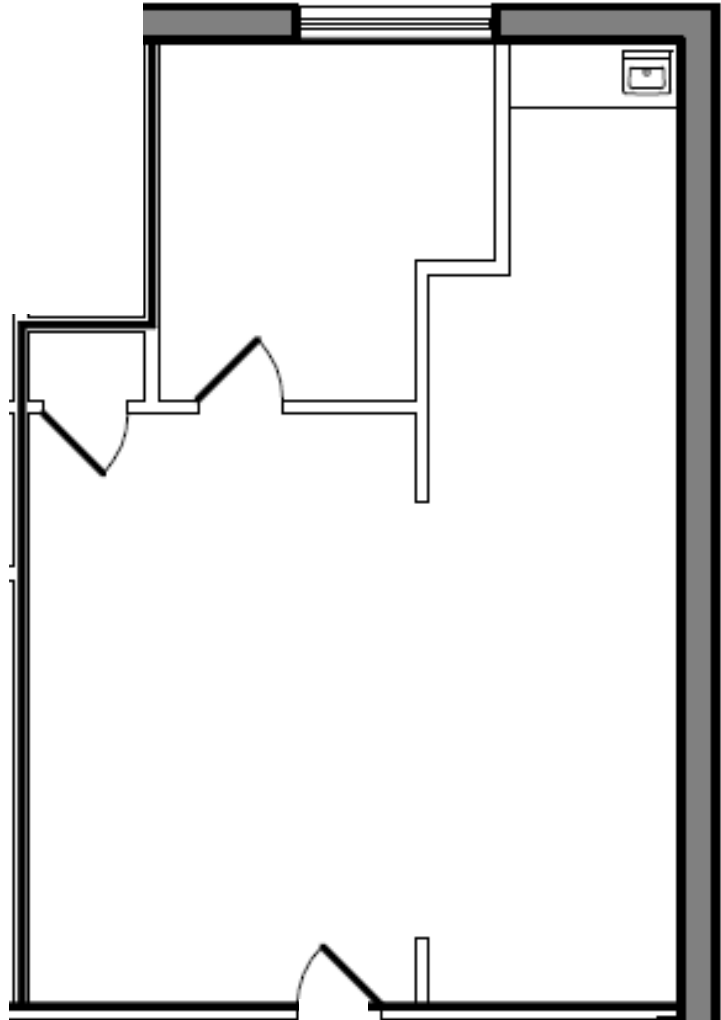
David M. Zeigler, SIOR
 dzeigler@lee-associates.com
 D 314-400-4001
 C 314-496-9023

Daniel B. Barnes
 dbarnes@lee-associates.com
 D 314-400-4004
 C 314-422-4272

All information furnished regarding property for sale, rental or financing is from sources deemed reliable, but no warranty or representation is made to the accuracy thereof and same is submitted to errors, omissions, change of price, rental or other conditions prior to sale, lease or financing or withdrawal without notice. No liability of any kind is to be imposed on the broker herein.

SUITE 134 - 606 SF

- Office Suite
- 2nd Floor Space
- Corner Suite
- 1 Private Office
- Kitchen/Breakroom Area
- Available Immediately
- **\$1,095 per Month, Full Service**

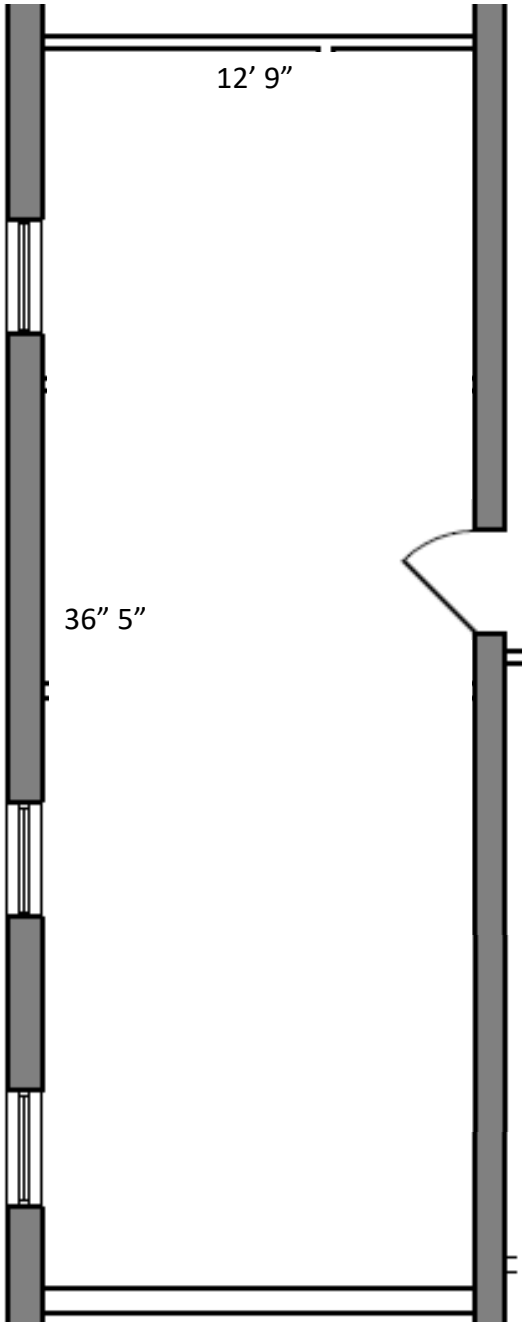


David M. Zeigler, SIOR
dzeigler@lee-associates.com
D 314-400-4001
C 314-496-9023

Daniel B. Barnes
dbarnes@lee-associates.com
D 314-400-4004
C 314-422-4272

All information furnished regarding property for sale, rental or financing is from sources deemed reliable, but no warranty or representation is made to the accuracy thereof and same is submitted to errors, omissions, change of price, rental or other conditions prior to sale, lease or financing or withdrawal without notice. No liability of any kind is to be imposed on the broker herein.

SUITE 210 - 551 RSF



- Office Suite
- 2nd Floor Space
- Open Floor Plan with 3 Windows
- Elevator Served
- Available Feb 1, 2021
- **\$985 per Month, Full Service**

David M. Zeigler, SIOR

dzeigler@lee-associates.com

D 314-400-4001

C 314-496-9023

Daniel B. Barnes

dbarnes@lee-associates.com

D 314-400-4004

C 314-422-4272

All information furnished regarding property for sale, rental or financing is from sources deemed reliable, but no warranty or representation is made to the accuracy thereof and same is submitted to errors, omissions, change of price, rental or other conditions prior to sale, lease or financing or withdrawal without notice. No liability of any kind is to be imposed on the broker herein.