

# DEVELOPMENT OPPORTUNITY AVAILABLE

900 Apollo Court, Antioch, CA



## LISTING DATA

### AVAILABILITY:

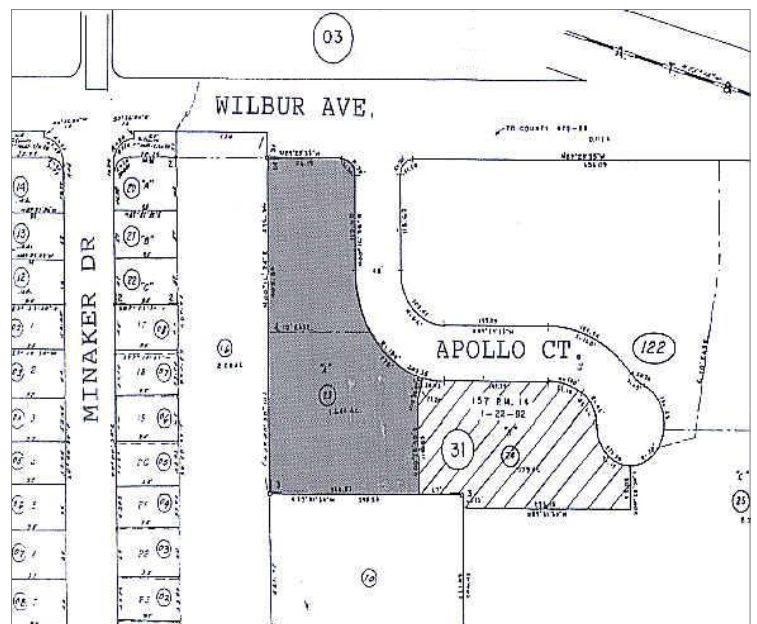
Largest undeveloped parcel in TK Business Park  
1.64 ± Acres of level, graded commercial land

### PROPERTY INFORMATION:

- Utilities: Stubbed to Site
- Zoning : Planned Business Center
- Access: Hwy 4 (1 mile) & Hwy 160 (2 miles)

## ECONOMIC DATA

**For Sale at \$430,000 (\$6/ft)**

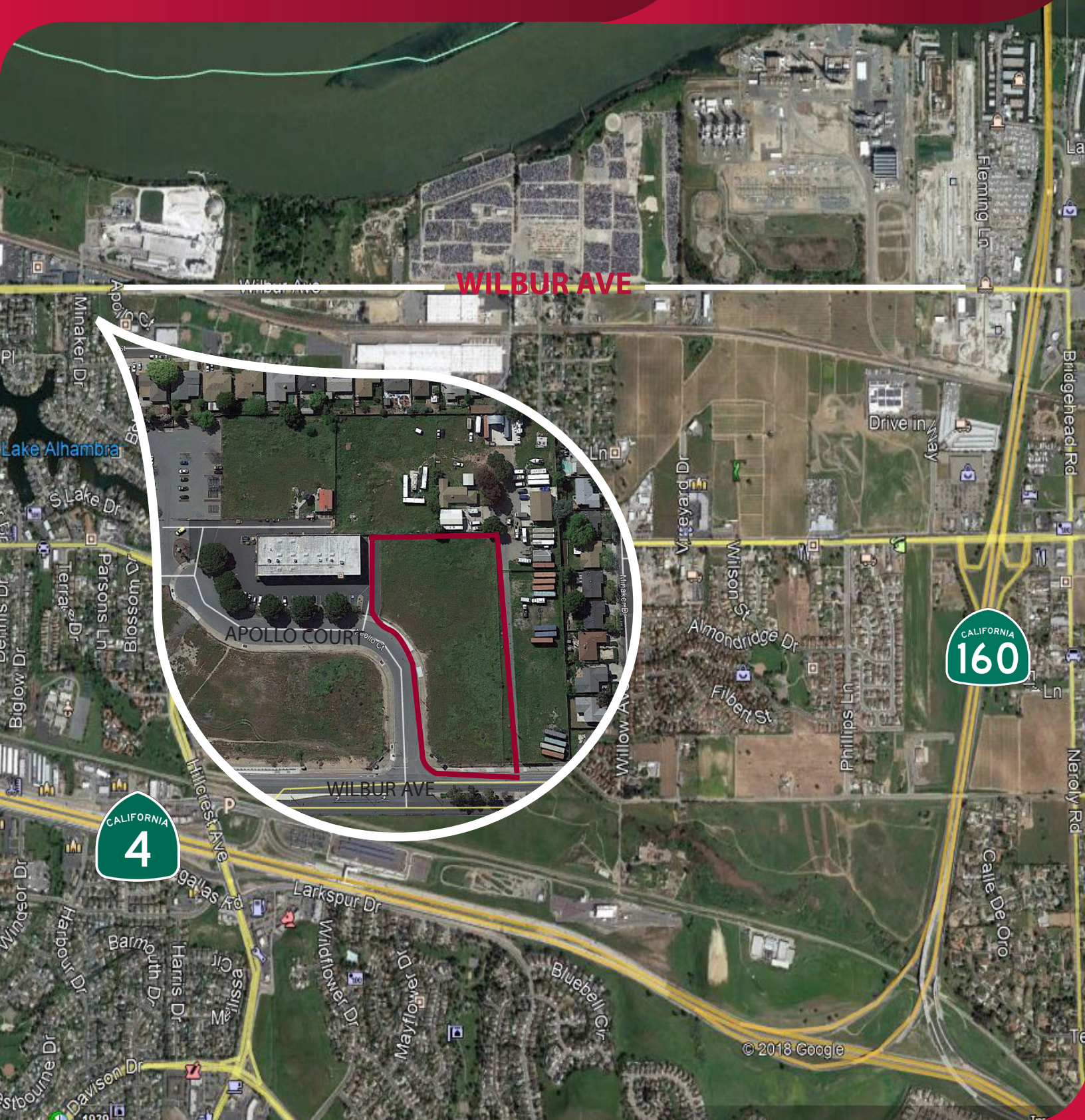


Jordan Lewis  
jlewis@lee-associates.com  
D 925.239.1416

Maximillian Gompertz  
mgompertz@lee-associates.com  
D 925.239.1415

# DEVELOPMENT OPPORTUNITY AVAILABLE

900 Apollo Court, Antioch, CA



Jordan Lewis  
jlewis@lee-associates.com  
D 925.239.1416

Maximillian Gompertz  
mgompertz@lee-associates.com  
D 925.239.1415

## Possible Site Plan

### Two Buildings with Yard



### Other layouts may include:

- Service bays for automotive purposes
- Multi-tenant light industrial condominiums
- Build-to-Suit opportunity
- Medical/Office Building(s)