



# 240

BUTCHER ROAD



General Commercial Zoning

[Click for Zoning Map & Site](#)

For further information please contact:

Chris Crabtree  
925-239-1422  
ccrabtree@lee-associates.com  
LIC# 01298060

Mark Dowling  
925-621-3844  
mark.dowling@cushwake.com  
LIC# 01943445

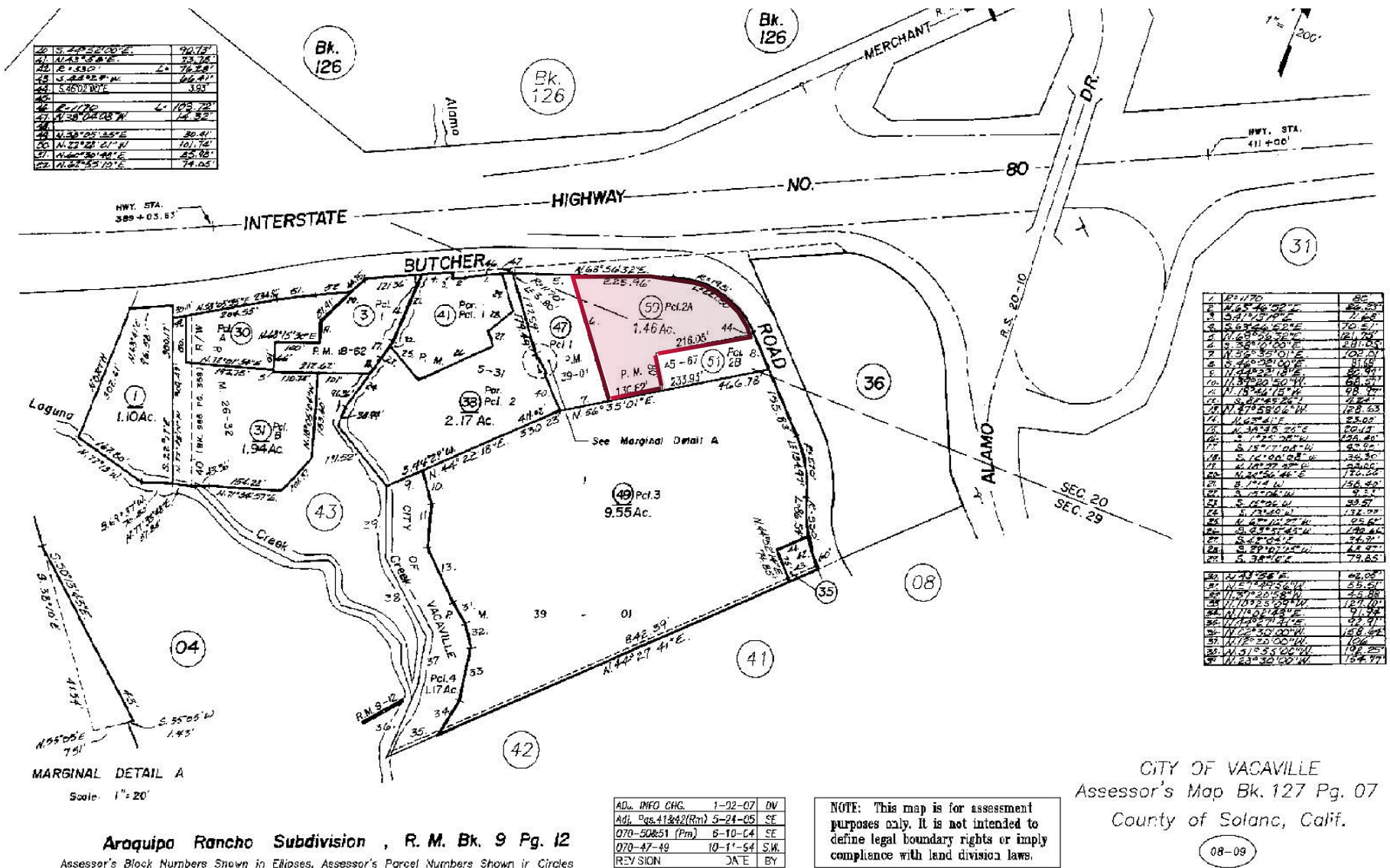


 **LEE &  
ASSOCIATES**  
COMMERCIAL REAL ESTATE SERVICES  
1407 Oakland Blvd, Suite 103  
Walnut Creek, CA 94596



# 240 BUTCHER RD, VACAVILLE

Copyright © 1996, Solano County Assessor/Recorder. All rights reserved.



All information furnished regarding property for sale, rental or financing is from sources deemed reliable, but no warranty or representation is made to the accuracy thereof and same is submitted to errors, omissions, change of price, rental or other conditions prior to sale, lease or financing or withdrawal without notice. No liability of any kind is to be imposed on the broker herein.



# 240 BUTCHER RD, VACAVILLE

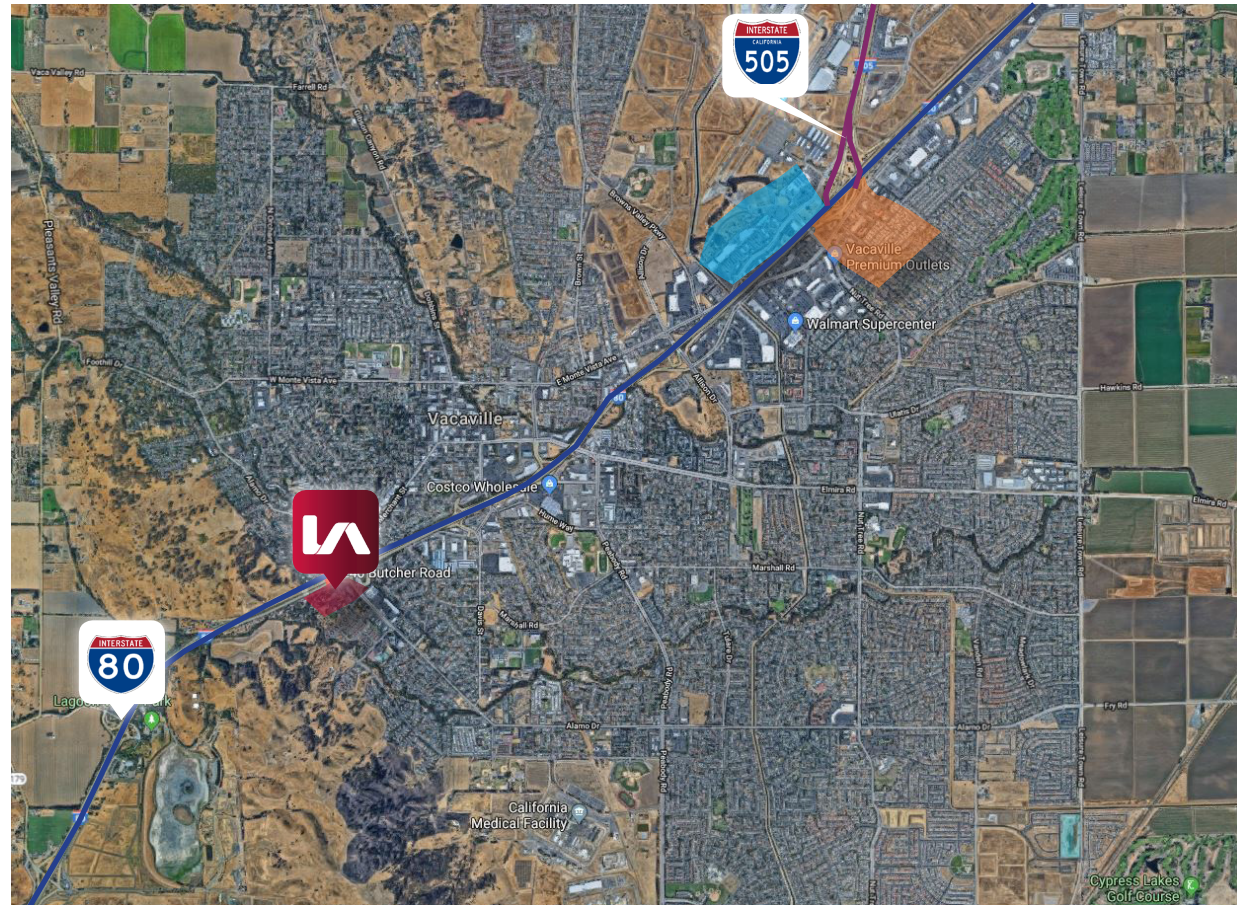
**SIZE:** Approximately 1.46 Acres/63,597 Sf




Site has approvals for enclosed building

## PERMITTED USES:

- Retail and General Merchandise
- Schools, specialized, small
- Office and Medical
- Fitness Centers
- Automobiles and other vehicles, sales, and service, new
- Furniture, furnishings, and equipments stores
- Microbreweries, craft distilleries, and microwineries, subject to conditions
- Parking lot
- Veterinary hospitals
- Recreational centers and facilities
- Plus other conditional uses.

[Click here for complete lists of uses](#)



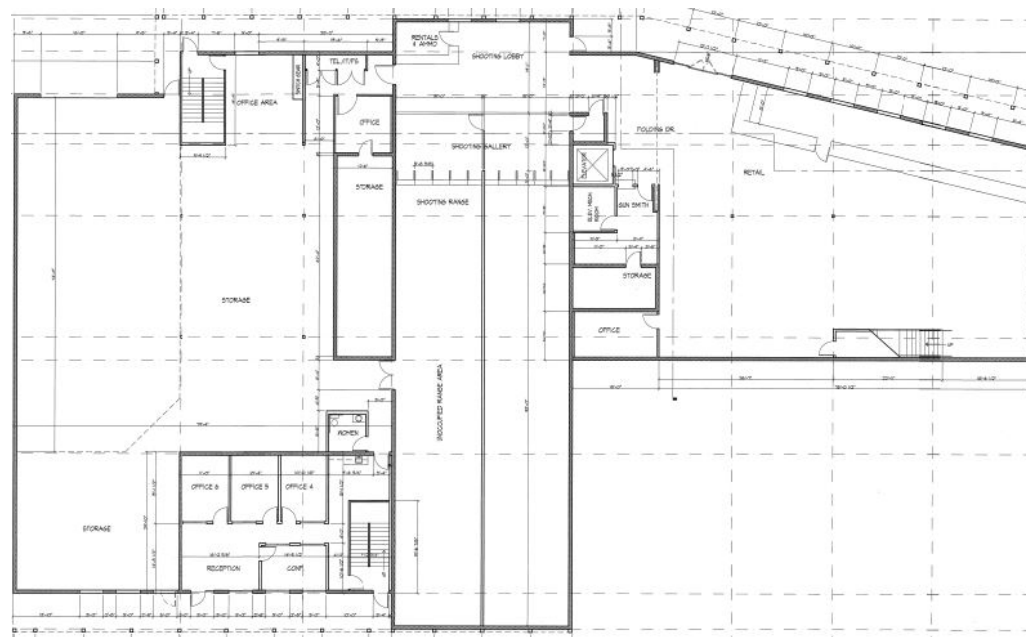
	Nut Tree Plaza		I-80
	Vacaville Premium Outlets		I-505
	240 Butcher Rd		

All information furnished regarding property for sale, rental or financing is from sources deemed reliable, but no warranty or representation is made to the accuracy thereof and same is submitted to errors, omissions, change of price, rental or other conditions prior to sale, lease or financing or withdrawal without notice. No liability of any kind is to be imposed on the broker herein.

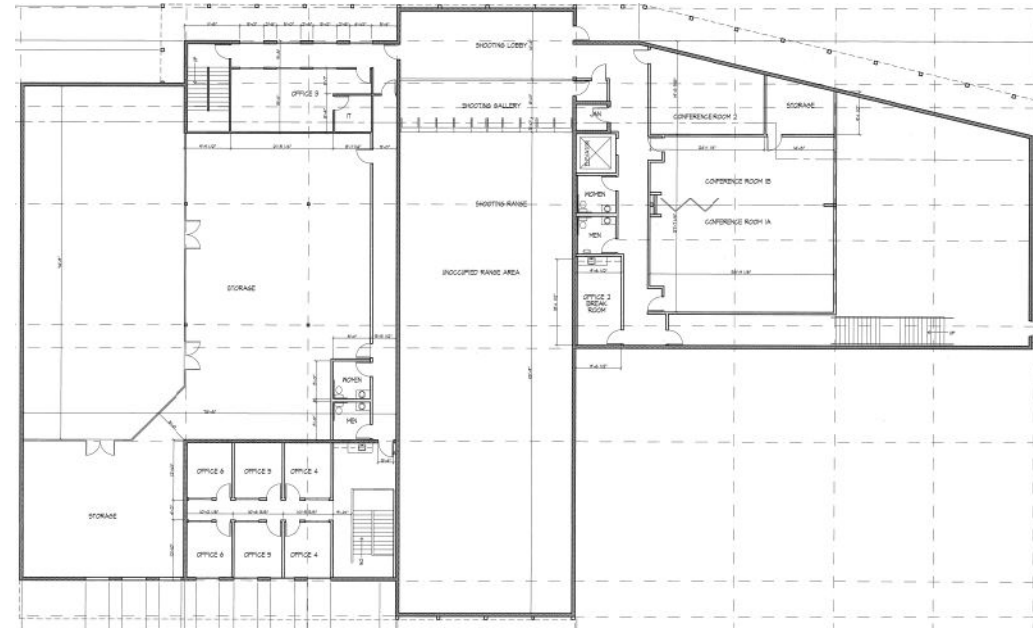


# CITY APPROVED PLAN

## 240 BUTCHER RD, VACAVILLE



First Floor



Second Floor



# 240 BUTCHER RD, VACAVILLE

