

Move-in-Ready Office Space in Chelsea

206 West 23rd Street

At 7th Avenue & 23rd Street Intersection

Approximately 1,200 Sq Feet

Entire 5th Floor

Asking Reduced ~~\$4,200~~ \$3,950 Per Mo

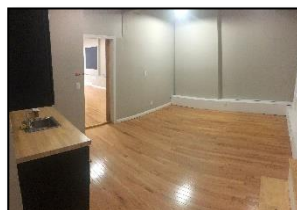
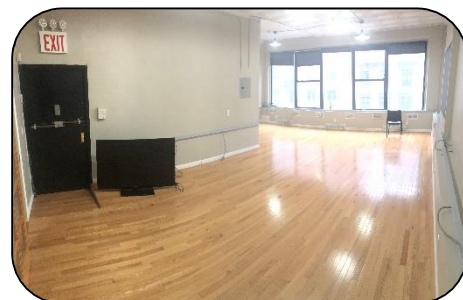
Previously a gallery tenant. Freshly painted and move in ready open floorplan with 1 large private office or conference room. Full kitchenette with sink, full bathroom with shower and great light with windows in front and rear. Full floor identity and 5th floor walk up.

Approximately 1,200 Sq Feet + Terrace

Entire 4th Floor

Asking Rent \$4,600 Per Mo

4th floor is move in ready with an open floorplan and 1 large private office or conference room. Private rear terrace and kitchenette with sink, full bathroom and wood floors. Full floor identity and 4th floor walk up.



Neighborhood Description

Prime Chelsea Location right next to the 1 train at 7th Ave and a block from the C&E Trains to the West at 8th and a block from the F&M trains to the East at 6th Ave.

For More Information Please Contact

**Jeffrey Angel
212-719-7017**

Jeffrey.angel@resnewyork.com

R·E·S

Although the information contained herein has been provided by sources that we deem reliable, we do not guarantee it's accuracy in any way. No expressed nor implied warranties are made as to the accuracy of any/and all of the information contained herein and it should not be relied upon in any way by a prospective tenant. All information contained herein should be independently verified prior to anyone entering into a form of legal binding agreement to purchase, lease or otherwise procure the premises or situation presented herein. All information is subject to change or withdrawal without reason or notice. This flyer may contain errors and/or omissions for which RES, nor the landlord shall be held responsible for in any way.