

MEDICAL SUITE FOR LEASE

20406 Redwood Road, Suite E
Castro Valley | CA



LISTING DATA

- Suite E: 1,088±SF
- Suite consists of three (3) exam rooms, one (1) private office, one (1) private restroom, waiting room, reception area, lab area & break room
- Easy access from I-580 with close proximity to Eden Medical Center & Castro Valley BART
- Many nearby amenities
- Ample parking onsite



ECONOMIC DATA

Call Broker for touring & rate information

Mark Rinkle
Lic.ID#01512632
mrinkle@lee-associates.com
D 925.737.4145

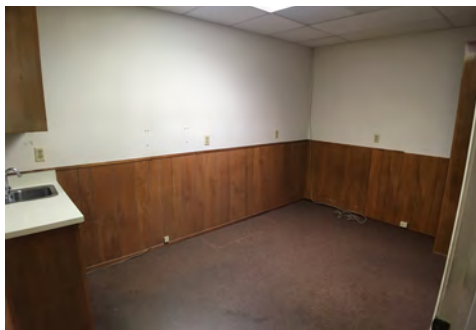
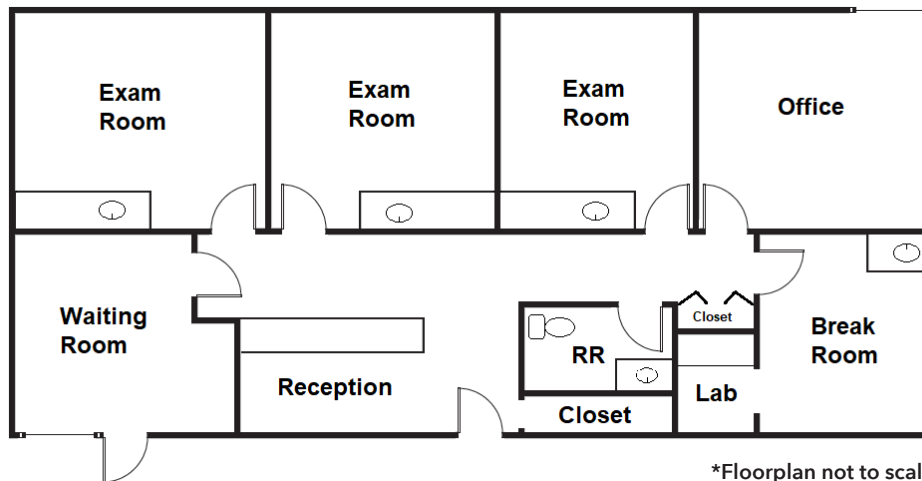
All information furnished regarding property for sale, rental or financing is from sources deemed reliable, but no warranty or representation is made to the accuracy thereof and same is submitted to errors, omissions, change of price, rental or other conditions prior to sale, lease or financing or withdrawal without notice. No liability of any kind is to be imposed on the broker herein.

MEDICAL SUITE FOR LEASE

20406 Redwood Road, Suite E
Castro Valley | CA

FLOORPLAN & PHOTOS

1,088±RSF



Mark Rinkle
Lic.ID#01512632
mrinkle@lee-associates.com
D 925.737.4145

All information furnished regarding property for sale, rental or financing is from sources deemed reliable, but no warranty or representation is made to the accuracy thereof and same is submitted to errors, omissions, change of price, rental or other conditions prior to sale, lease or financing or withdrawal without notice. No liability of any kind is to be imposed on the broker herein.