



SEC Harley Knox Blvd & Indian St | Perris

- APN# 302-090-027 & 28 (2 Parcels)
- ±7.8 Gross Acres Vacant Land (Improved Offsites)
- Zoned Light Industrial (LI)
- Flat Topography
- Corporate neighbors include, Home Depot, Lowes, Ross, Whirlpool, Hanes, iHerb, Harbor Freight and Walgreens
- Easy Access to I-215 Fwy via Harley Knox On/Off-Ramp

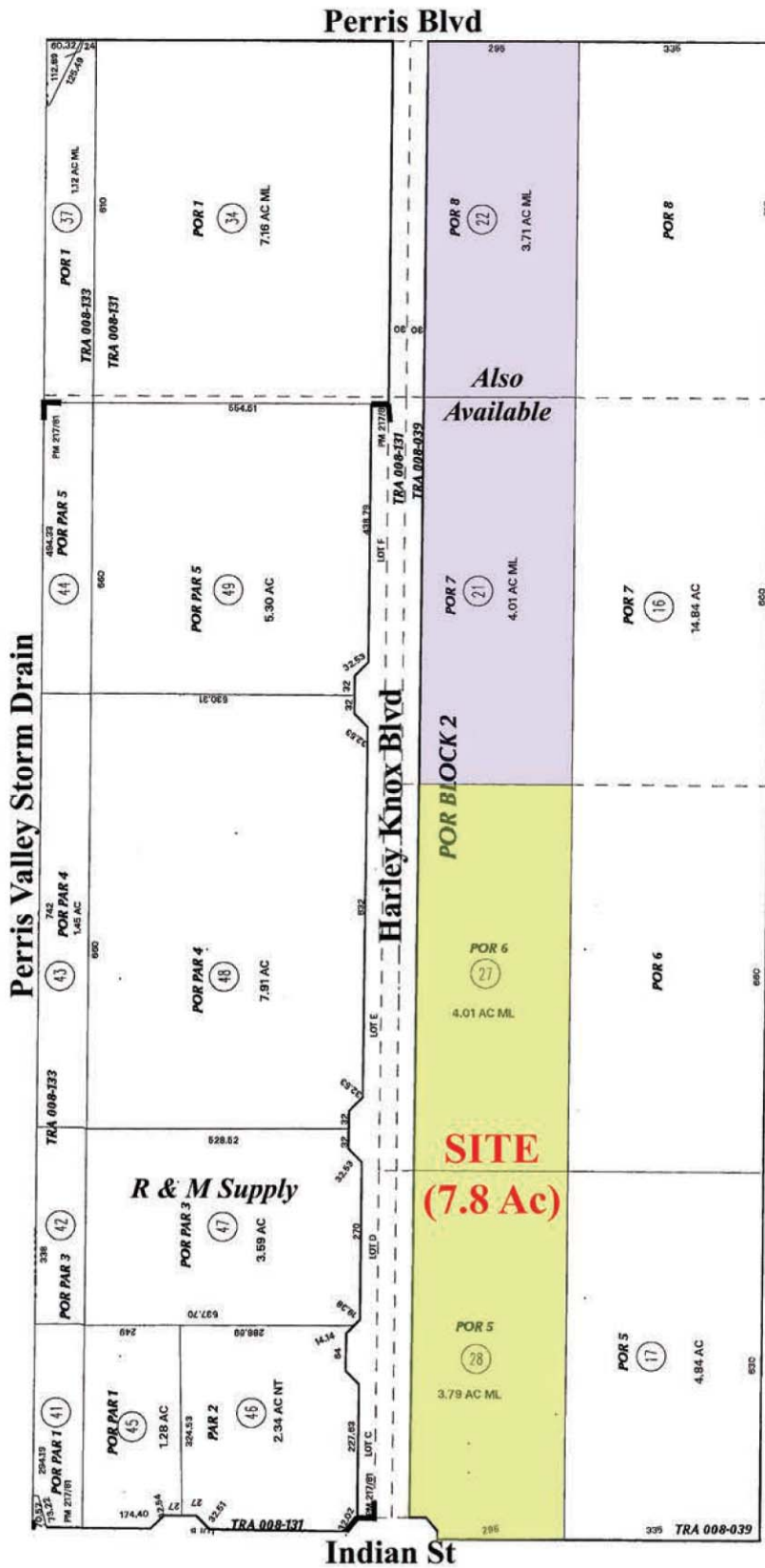
For More Information, Please Contact:

MIKE WOLFE, SIOR
DRE Lic# 00641624
909-373-2915
mwolfe@lee-assoc.com

MICHAEL FINE
DRE Lic# 00976995
909-373-2917
mfine@lee-assoc.com

Lee & Associates-Ontario (DRE Lic #00976995)
3535 Inland Empire Blvd., Ontario, CA 91764
909-989-7771 (Main) | 909-944-8250 (Fax)
www.lee-associates.com





For More Information, Contact:

MIKE WOLFE, SIOR
DRE Lic# 00641624
909-373-2915
mwolfe@lee-assoc.com

MICHAEL FINE
DRE Lic# 00976995
909-373-2917
mfine@lee-assoc.com



This information has been obtained from sources deemed reliable. However, no warranty or representation is made to the accuracy of the foregoing information. Terms of sale, lease and availability are subject to to change or withdrawal without notice. You and your advisors should conduct a careful and independent investigation of the property to determine to your satisfaction the suitability of the property for your need.