

# FOR LEASE | 2,402 SF

3145 Tiger Run Ct, #102, Carlsbad, CA 92010



## PROPERTY FEATURES

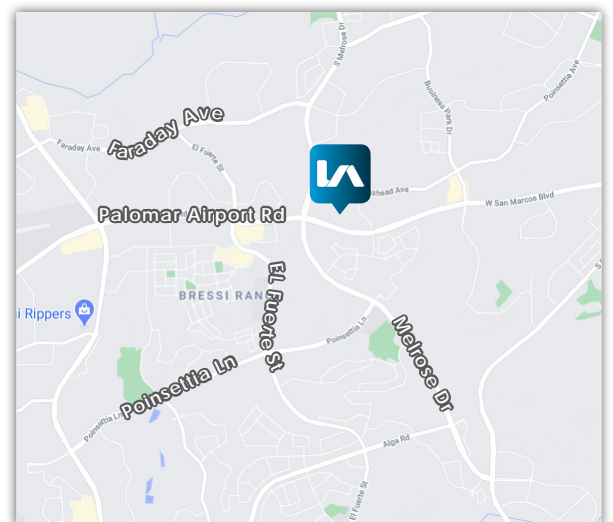
- Approx. 2,402 SF
- Approx. 1,000 SF warehouse
- Located within Palomar Forum Business Park
- Sublease expires 3/31/2024

PLEASE CALL BROKER TO ARRANGE A PROPERTY

TOUR- DO NOT DISTURB CURRENT TENANT

**LEASE RATE: \$1.45/SF + CAM (\$0.14/SF)**

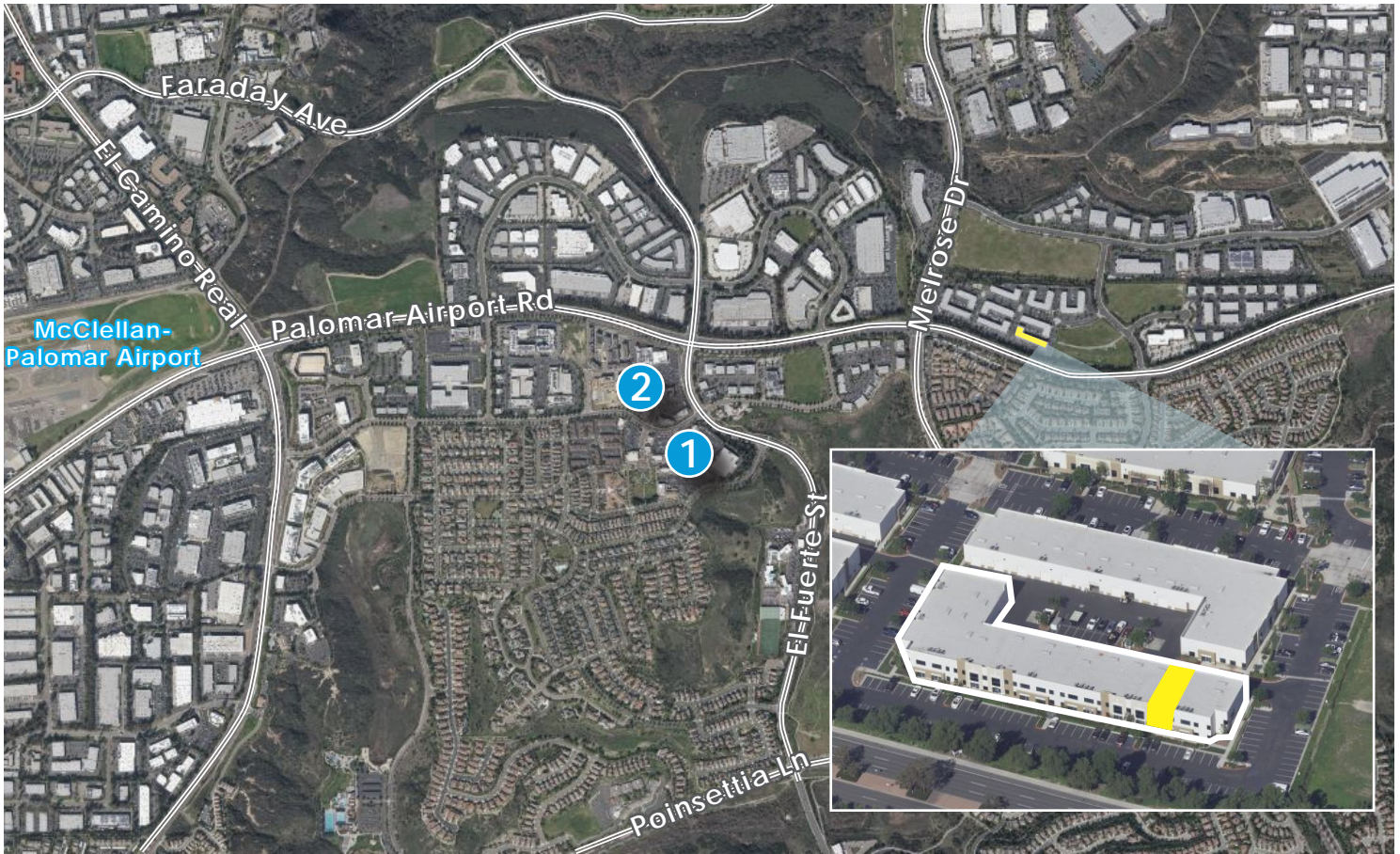
John Orlando  
(760) 448 - 2455  
jorlando@lee-associates.com  
DRE Lic# 01248992



All information furnished regarding property for sale, rental or financing is from sources deemed reliable, but no warranty or representation is made to the accuracy thereof and same is submitted to errors, omissions, change of price, rental or other conditions prior to sale, lease or financing or withdrawal without notice. No liability of any kind is to be imposed on the broker herein.

# FOR LEASE | 2,402 SF

3145 Tiger Run Ct, #102, Carlsbad, CA 92010



## What's Nearby

### 1 - Bressi Ranch Village Center

### 2 - The Square at Bressi Ranch

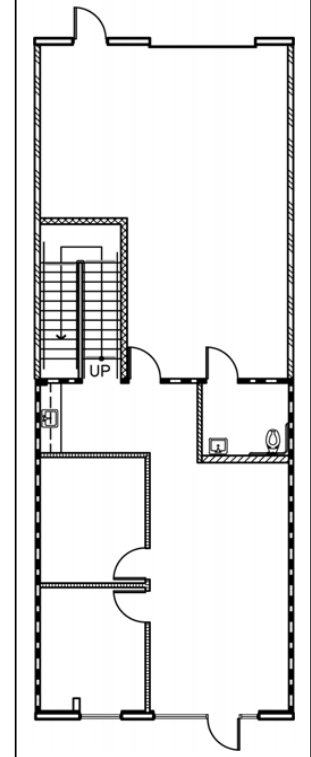
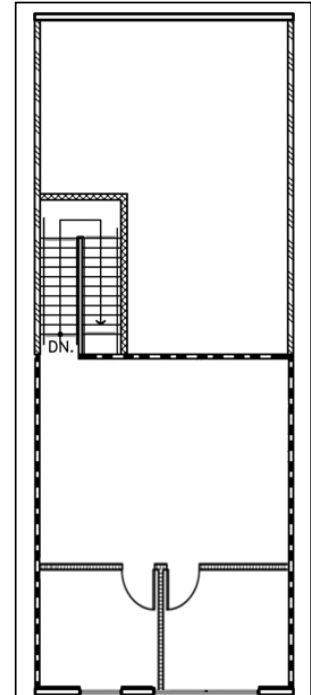
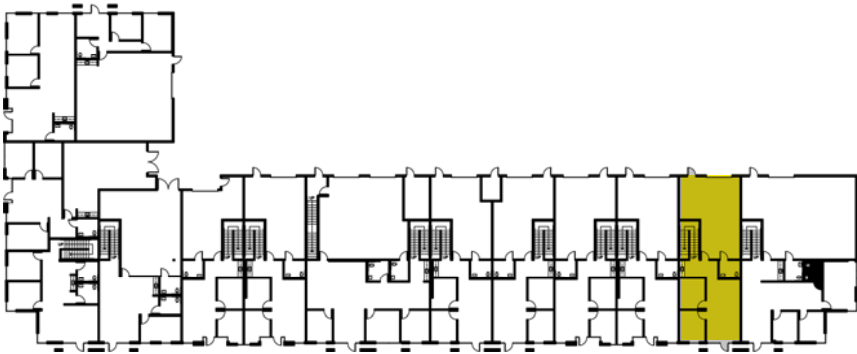


All information furnished regarding property for sale, rental or financing is from sources deemed reliable, but no warranty or representation is made to the accuracy thereof and same is submitted to errors, omissions, change of price, rental or other conditions prior to sale, lease or financing or withdrawal without notice. No liability of any kind is to be imposed on the broker herein.

FOR LEASE | 2,402 SF

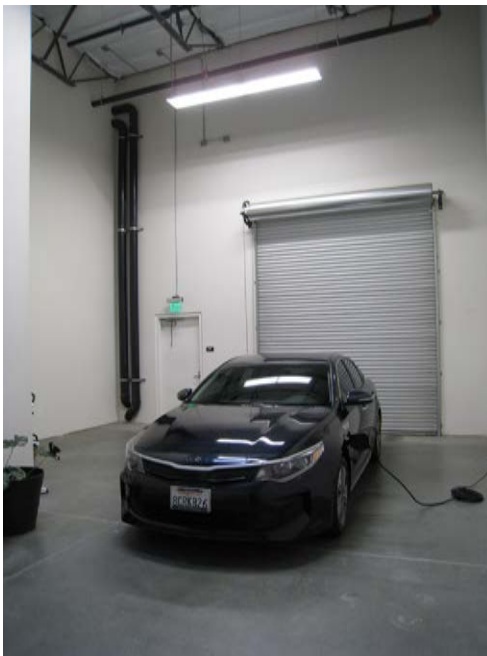
3145 Tiger Run Ct, #102, Carlsbad, CA 92010

## Site Plan & Floor Plan



FOR LEASE | 2,402 SF  
3145 Tiger Run Ct, #102, Carlsbad, CA 92010

## PROPERTY PHOTOS



John Orlando | (760) 448 - 2455 | [jorlando@lee-associates.com](mailto:jorlando@lee-associates.com) | CalDRE Lic# 01248992