

FOR SUBLEASE

SHORT TERM SUBLEASE

1665 S. Rancho Santa Fe Rd, Ste B - San Marcos, CA



PROPERTY OVERVIEW

The 1665 Rancho Santa Fe Rd property is located within the prestigious La Costa Meadows Business Center. The space is conveniently located at the entrance of the project with quick ingress & egress and within minutes to Carlsbad, Rancho Santa Fe, La Costa, Vista and Encinitas. The 2,699 square foot space consists of 15% office, two restrooms and remainder warehouse. With the vacancy rate dropping to 3.0%, La Costa Meadows continues to thrive as one of North County's strongest sub-markets.

Isaac Little

(760) 929-7862

ilittle@lee-associates.com

CAL BRE LIC# 01702879

Marko Dragovic

(760) 929-7839

mdragovic@lee-associates.com

CAL BRE LIC# 01773106

TJ Donnelly

(760) 929-7843

tjdonnelly@lee-associates.com

CAL BRE LIC# 02014349

FOR SUBLEASE

SHORT TERM SUBLEASE

1665 S. Rancho Santa Fe Rd, Ste B - San Marcos, CA



PROPERTY FEATURES

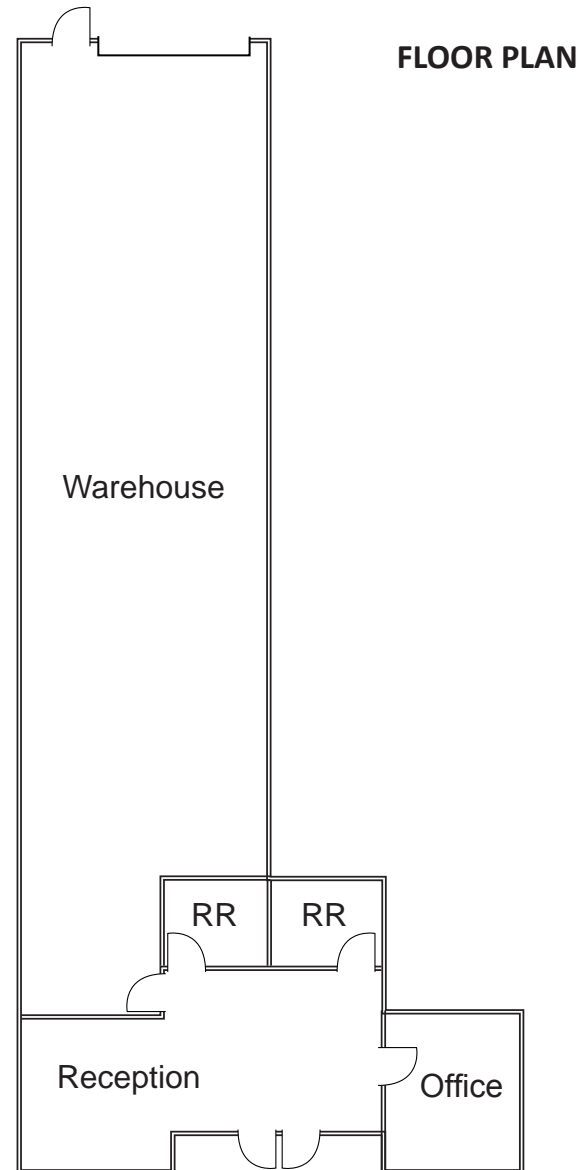
- Business Park: La Costa Meadows Business Center
- Rentable Square Footage 2,699 Square Feet
- Office: Large reception, one (1) private office, two (2) restrooms and remainder warehouse
- Loading: one (1) grade level loading door
- Clear Ht: 18' clear ht
- Availability: Immediate
- Location: Superior location with quick access to H-78, Rancho Santa Fe Rd and I-5
- **Sublease Term: July 31, 2018**
- **Sublease Rate: \$1.07/SF plus CAM (CAMs estimated at \$0.05/SF)**



FOR SUBLEASE

SHORT TERM SUBLEASE

1665 S. Rancho Santa Fe Rd, Ste B - San Marcos, CA

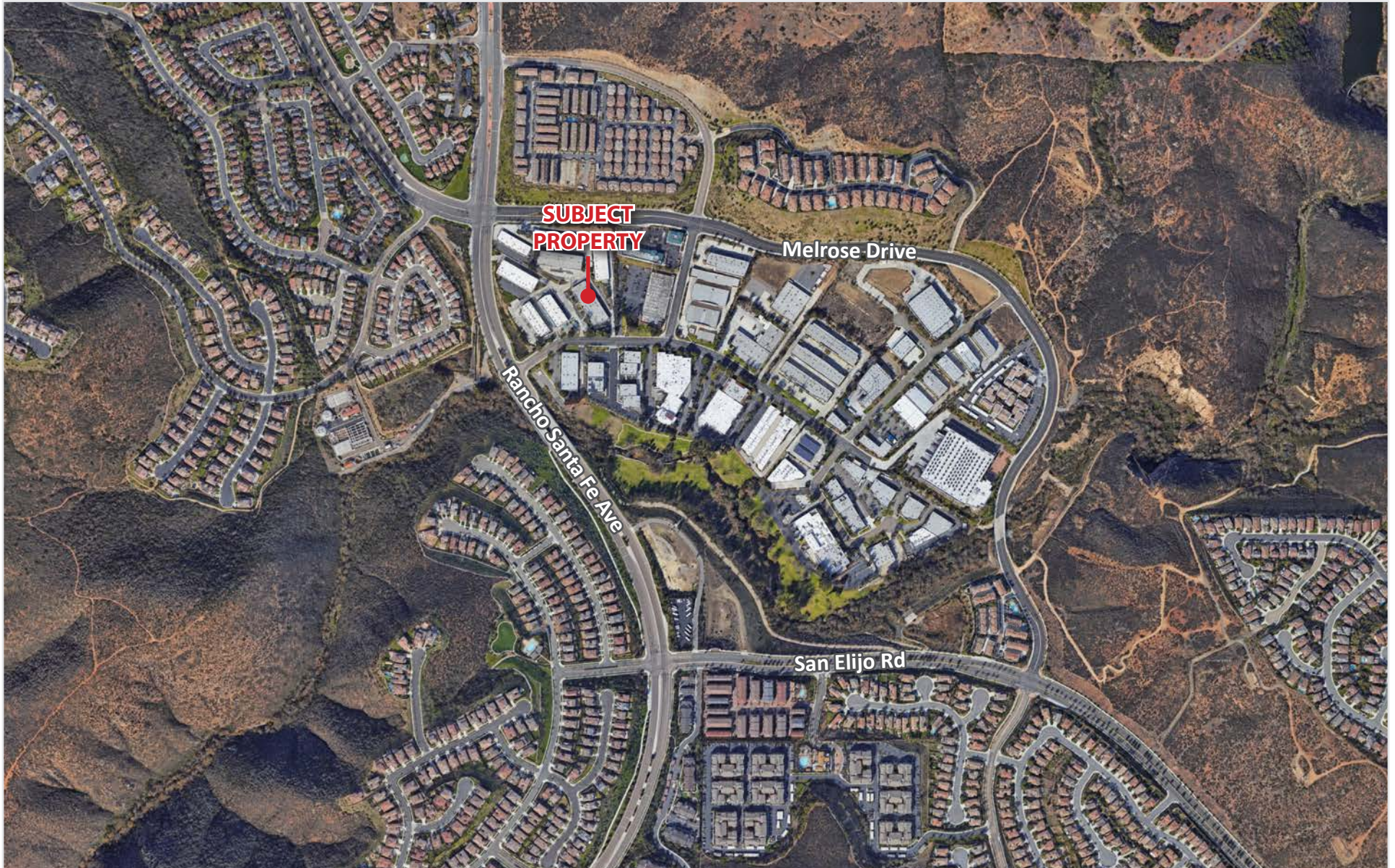


FOR SUBLEASE

SHORT TERM SUBLEASE

1665 S. Rancho Santa Fe Rd, Ste B - San Marcos, CA

LEE & ASSOCIATES
COMMERCIAL REAL ESTATE SERVICES



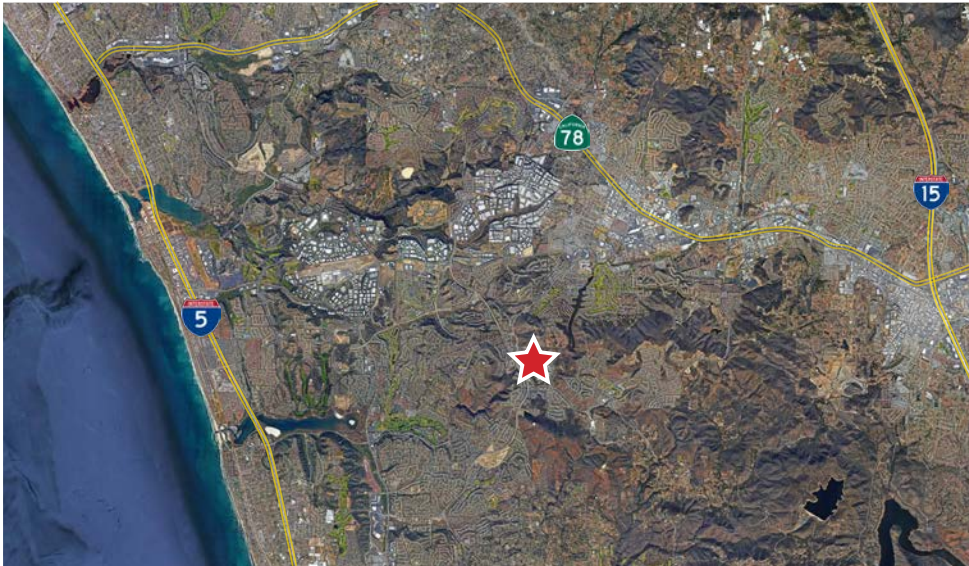
FOR SUBLEASE

SHORT TERM SUBLEASE

1665 S. Rancho Santa Fe Rd, Ste B - San Marcos, CA



AERIALS



FOR MORE INFO PLEASE CONTACT:

Isaac Little
ilittle@lee-associates.com
(760) 929-7862
CAL BRE LIC# 01702879

Marko Dragovic
mdragovic@lee-associates.com
(760) 929-7839
CAL BRE LIC# 01773106

TJ Donnelly
tjdonnelly@lee-associates.com
(760) 929-7843
CAL BRE LIC# 02014349

