

# PALOMAR BUSINESS CENTER

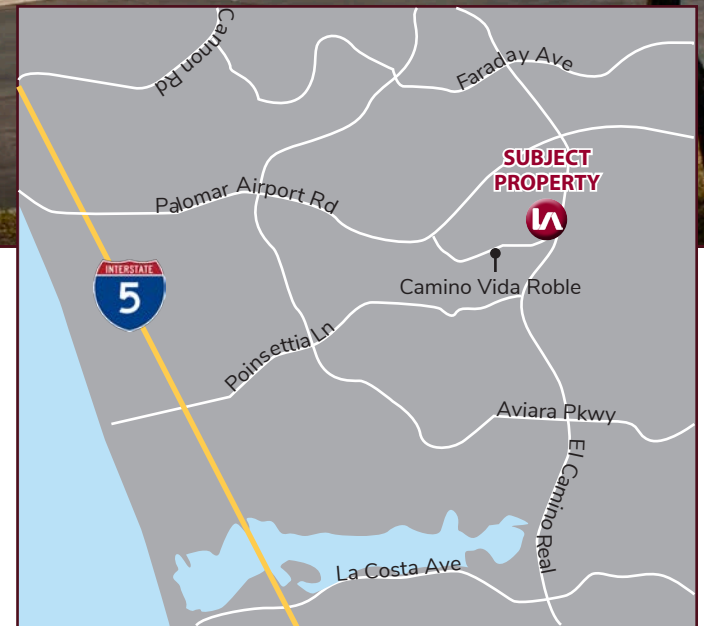
2380/2382 CAMINO VIDA ROBLE & 6353 EL CAMINO REAL | CARLSBAD, CA 92011



## INDUSTRIAL/R&D/OFFICE FOR LEASE

### BUILDING FEATURES

- » 1,113 SF Office Suite
- » Nicely Landscaped
- » Convenient Location
- » On-site Deli
- » Frontage on Major Commercial Corridor



DANIEL KNOKE | (760) 929-7836 | [dknoke@lee-associates.com](mailto:dknoke@lee-associates.com) | DRE Lic#01215373

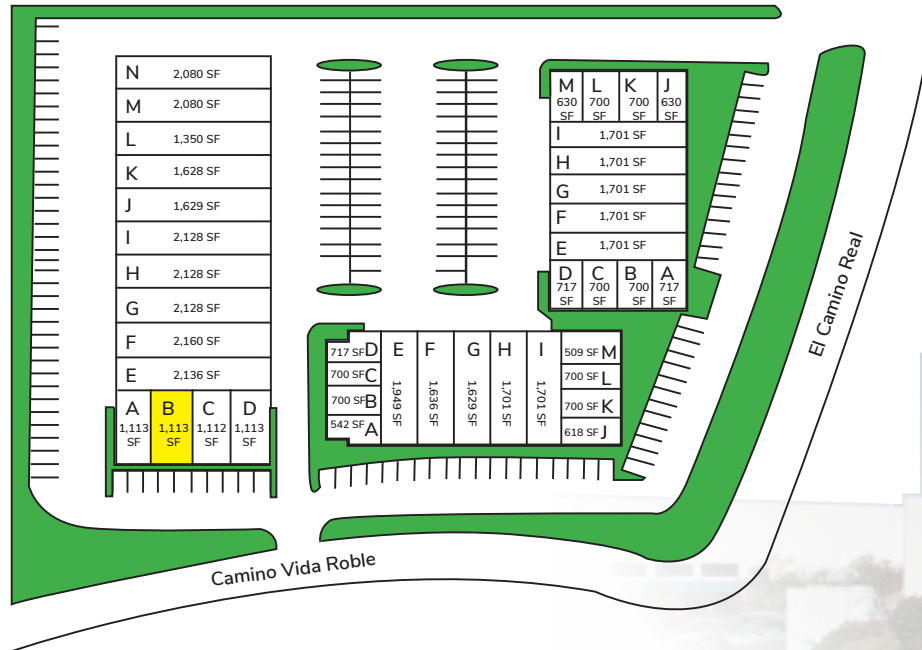
PETER MERZ | (760) 448-1362 | [pmerz@lee-associates.com](mailto:pmerz@lee-associates.com) | DRE Lic#01269042

# AVAILABILITY

2380 CAMINO VIDA ROBLE					
Suite #	Total SF	Office/Restroom	Rent/SF*	Available	Access
B	1,113	Showroom, 2 Offices, Restroom & Kitchenette	\$1.30 MG*	Now	JX130 LokBox

\*All units charged a common area maintenance charge (CAM) of approx. \$0.14 per SF

# SITE PLAN

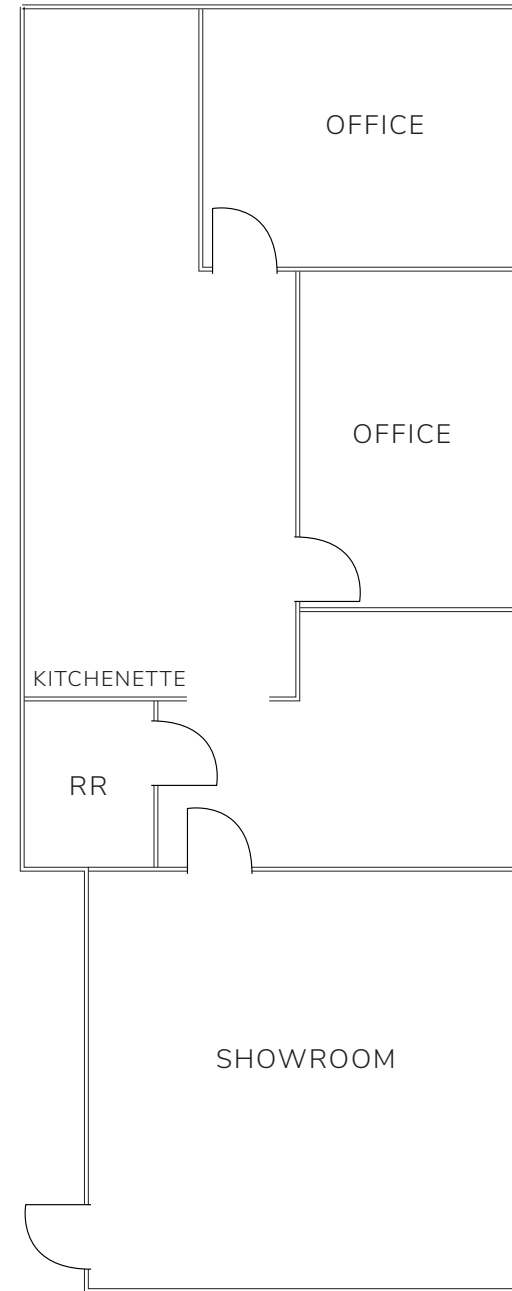


## FLOOR PLAN

2380 CAMINO VIDA ROBLE

<b>Suite #:</b>	B
<b>Total SF:</b>	1,113 SF
<b>Office/Restroom:</b>	Showroom, 2 Offices, Restroom & Kitchenette
<b>Rent/SF*:</b>	\$1.30 MG*
<b>Available:</b>	Now
<b>Access:</b>	JX130 LokBox

\*All units charged a common area maintenance charge (CAM) of approx. \$0.14 per SF



**DANIEL KNOKE** | (760) 929-7836 | [dknoke@lee-associates.com](mailto:dknoke@lee-associates.com) | DRE Lic#01215373

**PETER MERZ** | (760) 448-1362 | [pmerz@lee-associates.com](mailto:pmerz@lee-associates.com) | DRE Lic#01269042

All information furnished regarding property for sale, rental or financing is from sources deemed reliable, but no warranty or representation is made to the accuracy thereof and same is submitted to errors, omissions, change of price, rental or other conditions prior to sale, lease or financing or withdrawal without notice. No liability of any kind is to be imposed on the broker herein.