

# FOR LEASE

## ±12,000 SF Industrial Building

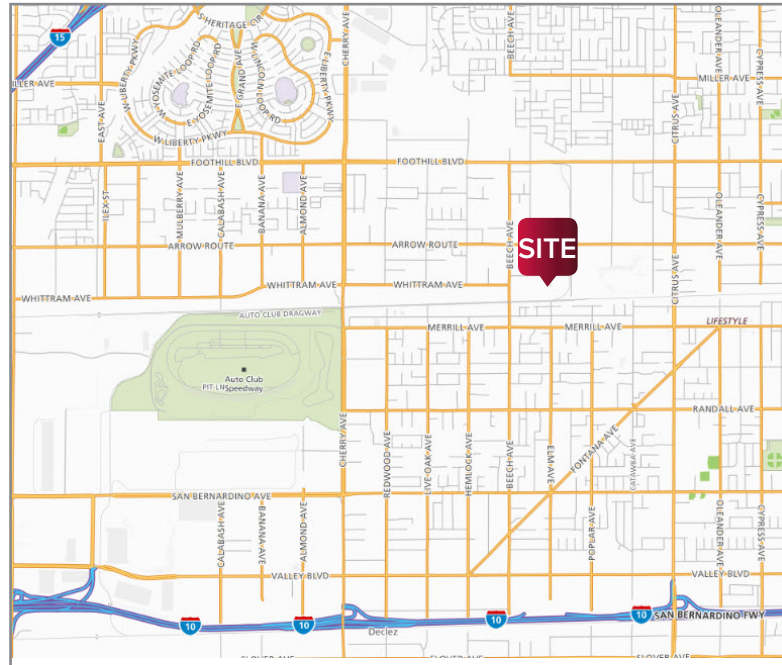


# 15342

 Valencía Avenue., Fontana, California 92335

### PROPERTY FEATURES

- ±12,000 SF Clear Span Metal Building
- ±0.75 Acre Lot
- Large & Secured Yard
- 400 Amps, 277/480 Volts
- 21' Clear Height
- ±1,200 SF of Office Space
- Heavy Industrial Zoning (I/R)
- Located within the Valencía Industrial Park



Lee & Associates - Ontario  
3535 Inland Empire Blvd., Ontario, California 91764  
lee-associates.com • 909.989.7771 • Corp ID 00976995

**John Mulrooney**, Senior Vice President/Principal  
D • 909.373.2928  
E • [jmulrooney@lee-assoc.com](mailto:jmulrooney@lee-assoc.com)  
DRE #00839176

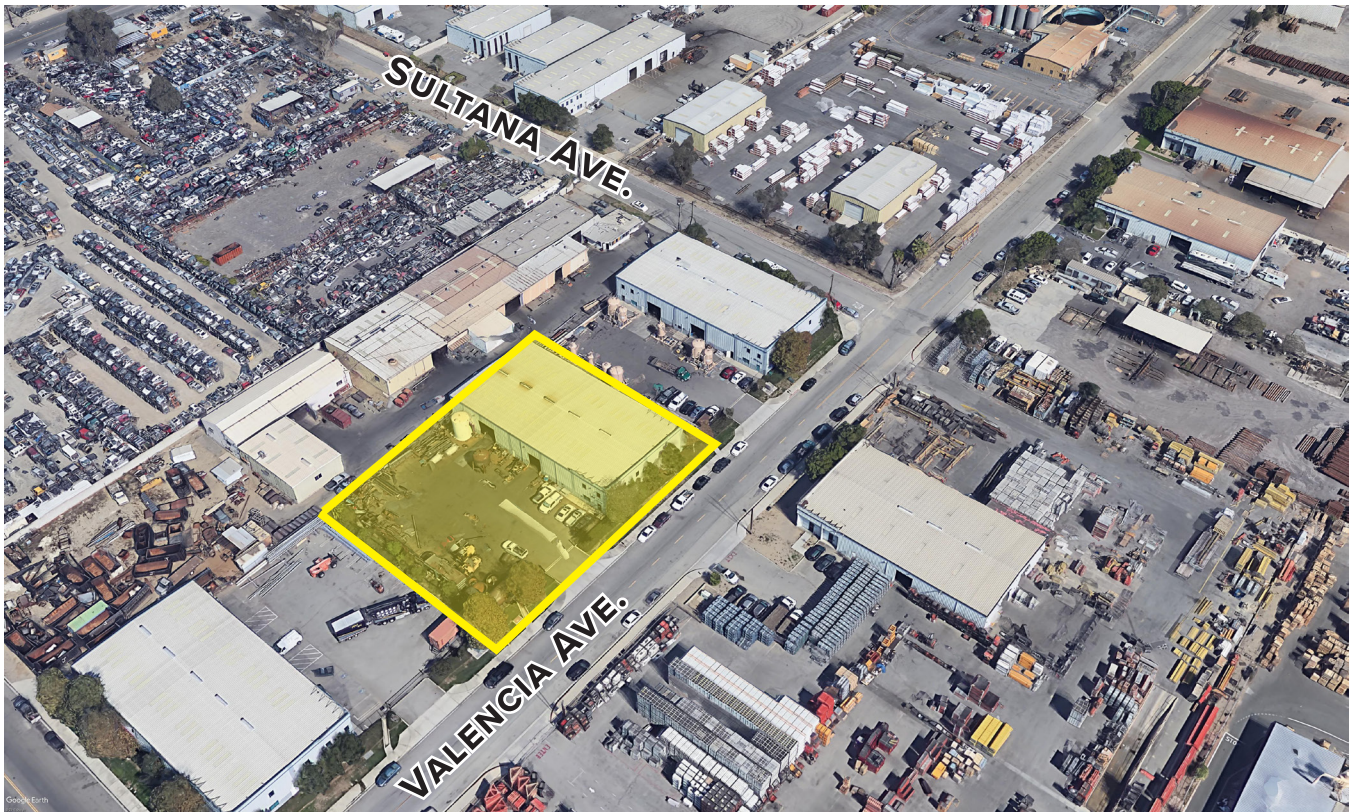
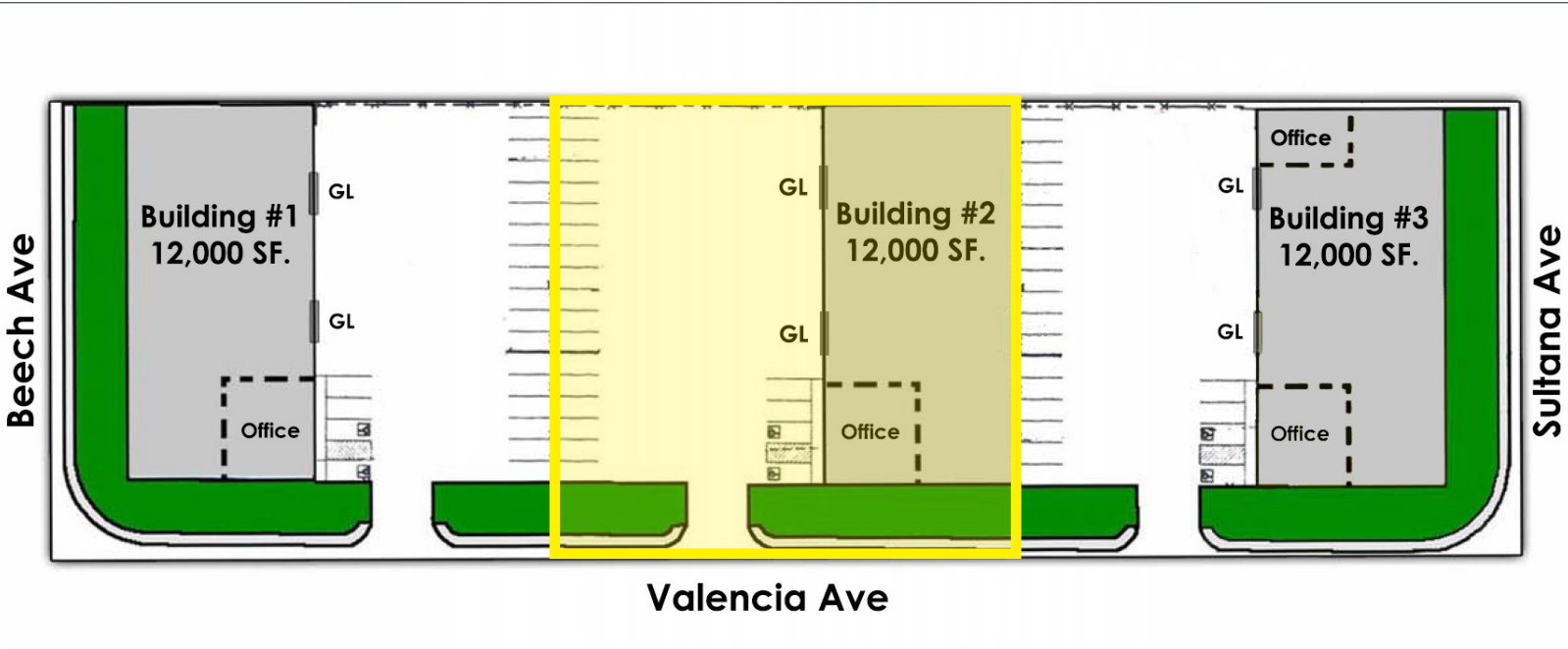
All information furnished regarding property for sale, rental or financing is from sources deemed reliable, but no warranty or representation is made to the accuracy thereof and same is submitted to errors, omissions, change of price, rental or other conditions prior to sale, lease or financing or withdrawal without notice. No liability of any kind is to be imposed on the broker herein.

**15342** Valencia Avenue, Fontana, California 92335

**FOR LEASE**

±12,000 SF Industrial Building

**SITE PLAN**



**John Mulrooney**, Senior Vice President/Principal  
D • 909.373.2928  
E • [jmulrooney@lee-assoc.com](mailto:jmulrooney@lee-assoc.com)  
DRE #00839176

Lee & Associates - Ontario  
3535 Inland Empire Blvd., Ontario, California 91764  
lee-associates.com • 909.989.7771 • Corp ID 00976995

All information furnished regarding property for sale, rental or financing is from sources deemed reliable, but no warranty or representation is made to the accuracy thereof and same is submitted to errors, omissions, change of price, rental or other conditions prior to sale, lease or financing or withdrawal without notice. No liability of any kind is to be imposed on the broker herein.