

RECENTLY RENOVATED!



HIGHLIGHTS

- Two free-standing, two-story office buildings
- Located in the professional Village Oaks Business Park
- All suites move-in ready with efficient layouts, window offices, private restrooms & kitchenettes
- Modern Spanish Colonial Revival architecture with covered porticos
- Royale Oak Office Park enjoys a park-like setting
- Ample free surface parking
- Immediate 10 freeway access
- Easy connection to 57 / 60 / 71 / 210 & 605 freeways
- Abundant retail & restaurant amenities nearby

RENTAL RATE

\$1.50 PSF/MG/Mo.

BLDG-SUITE

SQ. FT.

1272-101

971

1274-107

789

1274-208

743



PROPERTY DETAILS

Building Size

±14,641 SF

Year Built/Renovated

1980/2020

Parking Ratio

3.5/1,000

For more information please contact:

CHRISTOPHER LARIMORE

President

D • 626.240.2788

E • clarimore@lee-associates.com

LICENSE ID #01314464

VINCENT MOLITOR

Principal

D • 626.240.2787

E • vmolitor@lee-associates.com

LICENSE ID #01295360

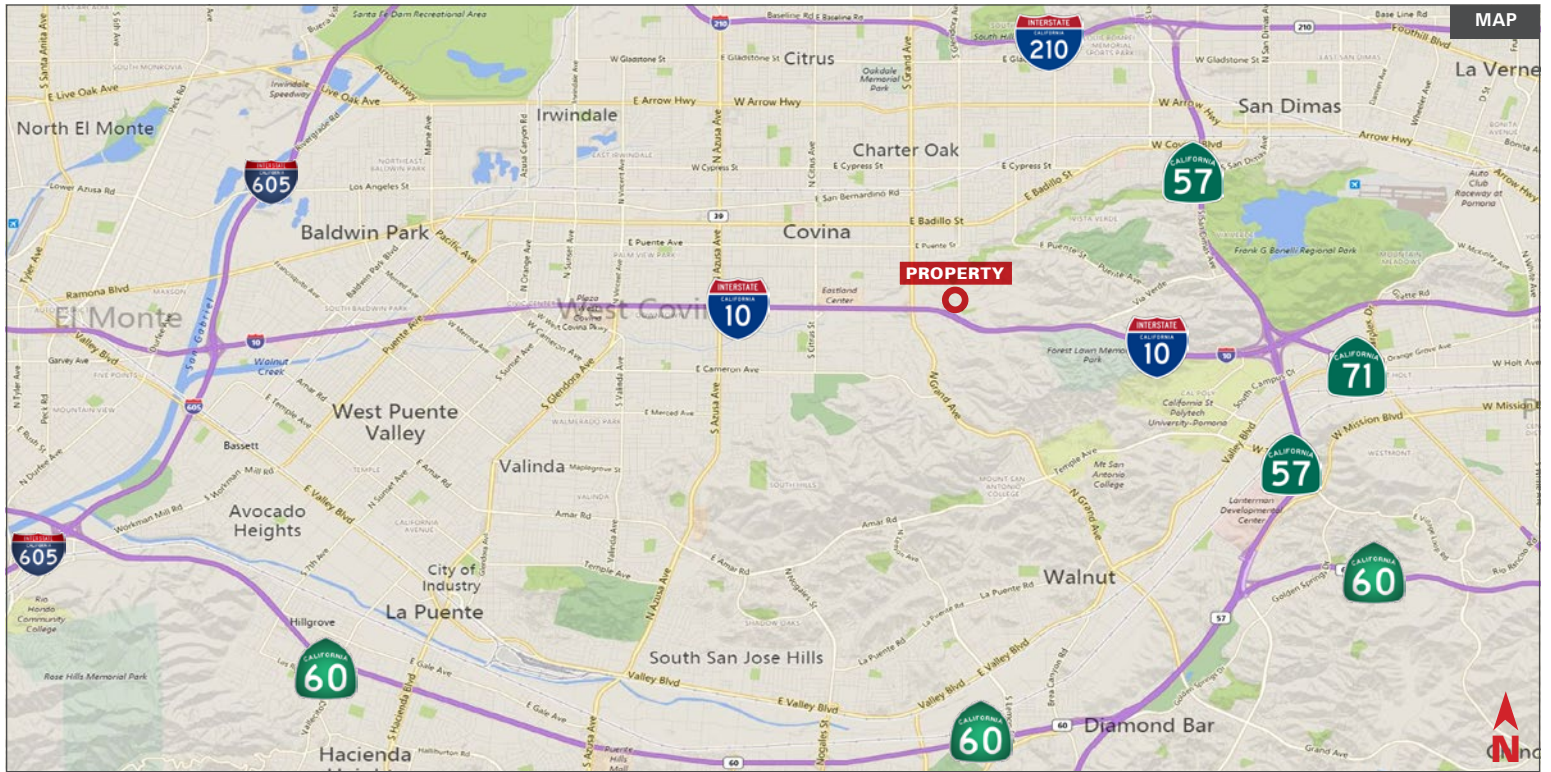


LEE & ASSOCIATES - PASADENA, INC.

155 N. Lake Avenue, Suite 430 • Pasadena, CA 91101

626.535.9888 O • 626.410.6705 F

CORPORATE ID #02059558



For more information please contact:

CHRISTOPHER LARIMORE

President

D • 626.240.2788

E • clarimore@lee-associates.com

LICENSE ID #01314464

VINCENT MOLITOR

Principal

D • 626.240.2787

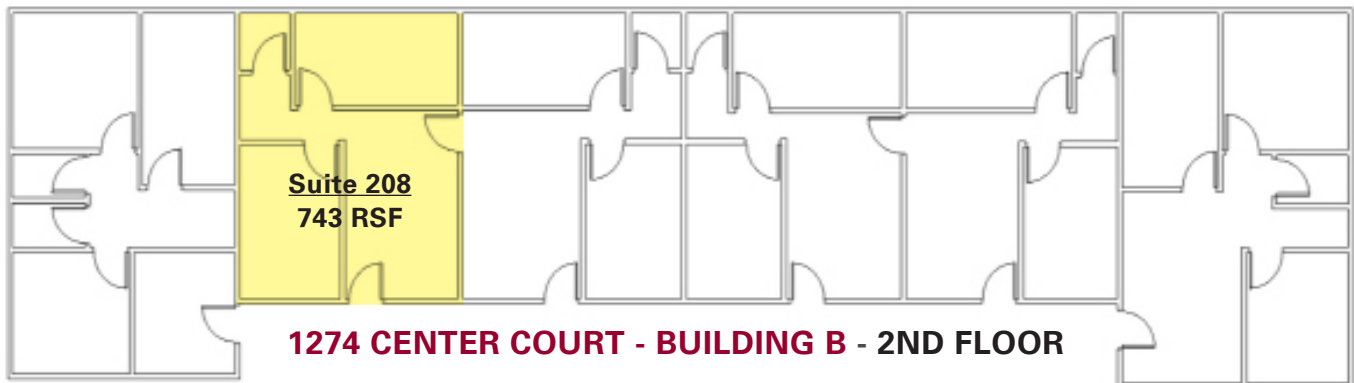
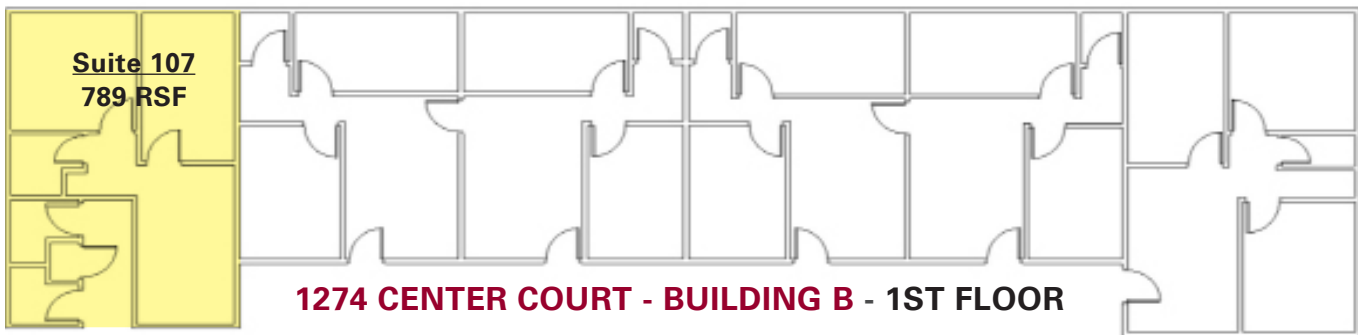
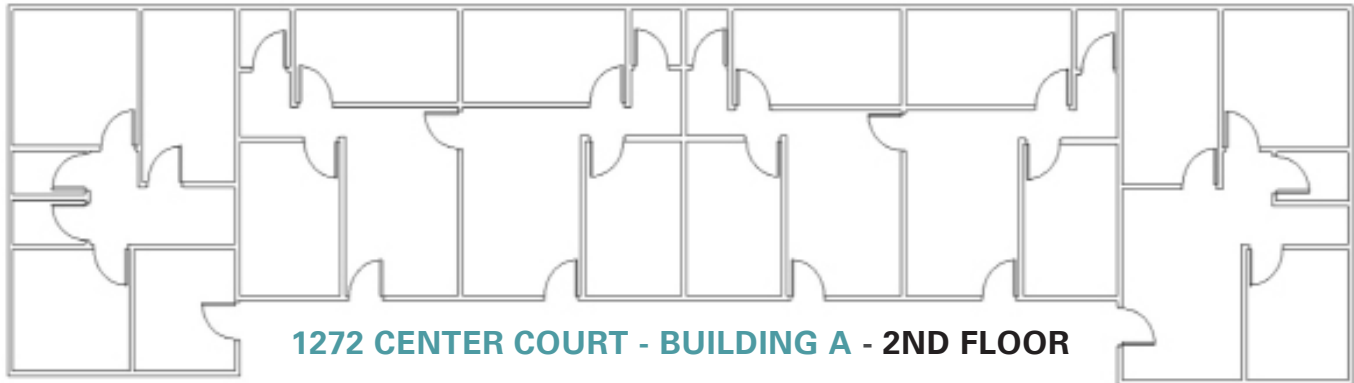
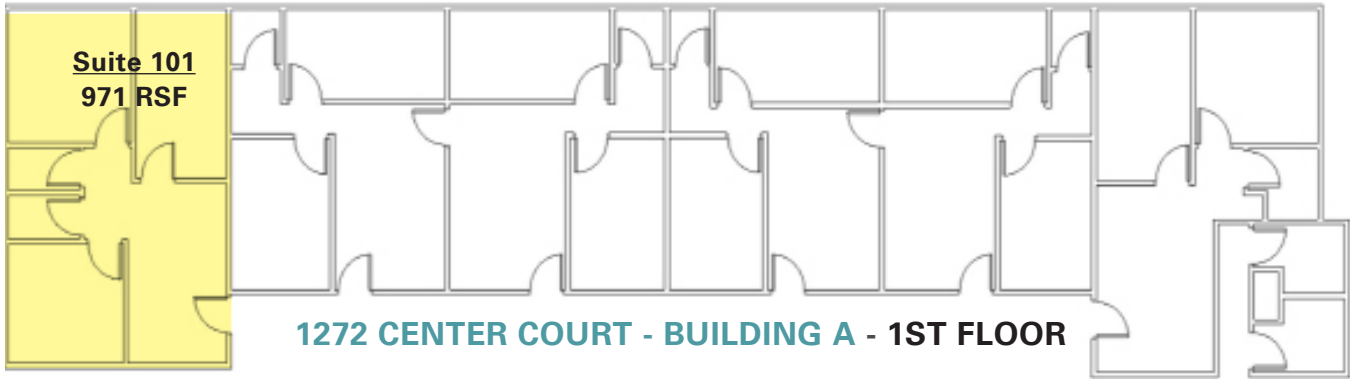
E • vmolitor@lee-associates.com

LICENSE ID #01295360

LEE & ASSOCIATES
COMMERCIAL REAL ESTATE SERVICES
PASADENA

LEE & ASSOCIATES - PASADENA, INC.
155 N. Lake Avenue, Suite 430 • Pasadena, CA 91101
626.535.9888 O • 626.410.6705 F
CORPORATE ID #02059558

FLOOR PLAN



For more information please contact:

CHRISTOPHER LARIMORE

President

D • 626.240.2788

E • clarimore@lee-associates.com

LICENSE ID #01314464

VINCENT MOLITOR

Principal

D • 626.240.2787

E • vmolitor@lee-associates.com

LICENSE ID #01295360



LEE & ASSOCIATES - PASADENA, INC.
155 N. Lake Avenue, Suite 430 • Pasadena, CA 91101
626.535.9888 O • 626.410.6705 F
CORPORATE ID #02059558