

**TENANT
INCENTIVE!**
**6 Months
½ Rent**
(on a 3-year deal)

CAMINO CORPORATE CENTER

2375, 2365 & 2355 Camino Vida Roble, 6451 El Camino Real | Carlsbad, CA

4,600 RSF - 9,419 RSF PRIME OFFICE SPACE

Lease Rate: \$1.05 - \$1.25 / RSF NNN (\$0.32 / RSF)



Jeff Abramson
jabramson@lee-associates.com
(760) 929-7835 | CalBRE Lic# 00956805



Barry Hendler
barry.hendler@cushwake.com
(760) 431-4219 | CalBRE Lic# 01008239

Availability

ADDRESS	RSF	LEASE RATE	AVAILABLE
2355 Camino Vida Roble	8,115 RSF	\$1.10 / RSF NNN	Now
2375 Camino Vida Roble	4,600 RSF	\$1.25 / RSF NNN	Now
6451 El Camino Real, Suite A	9,419 RSF	\$1.25 / RSF NNN	Now

*NNN = \$0.32 / RSF

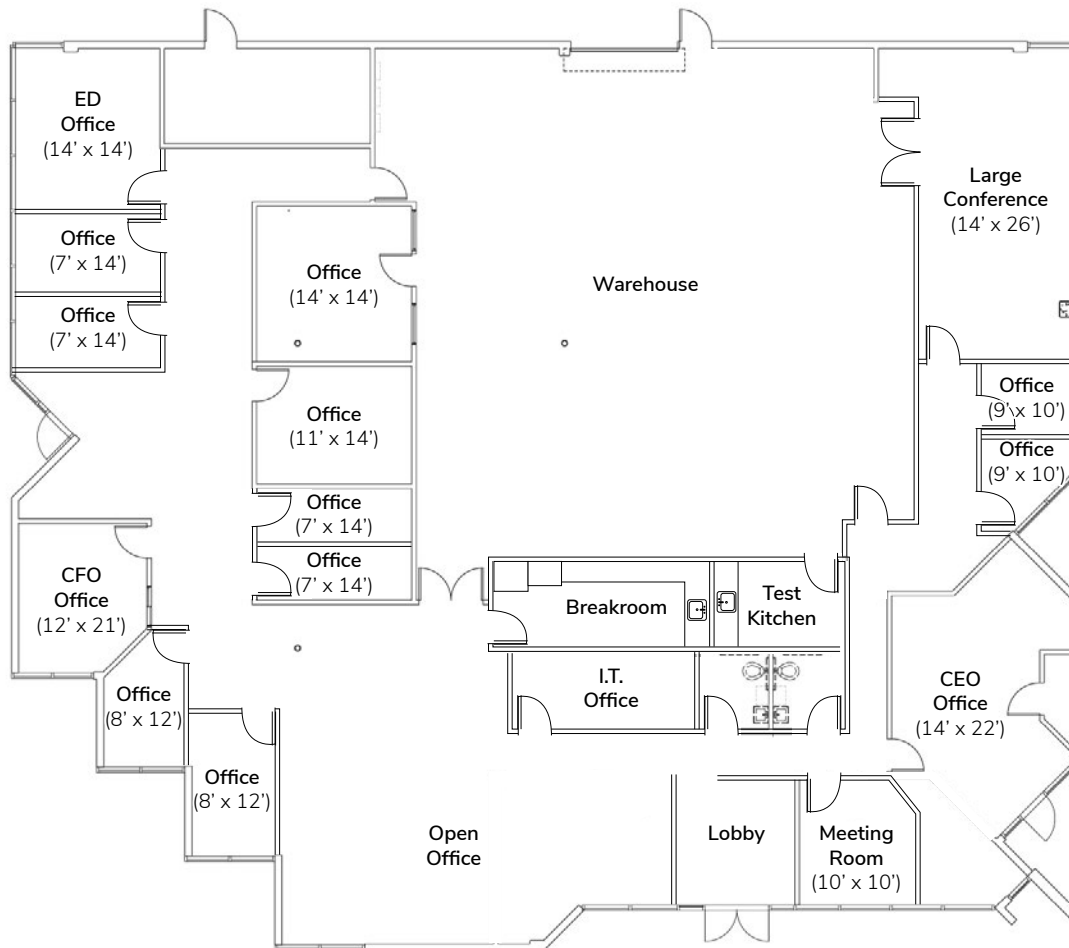


Jeff Abramson
 jabramson@lee-associates.com
 (760) 929-7835 | CalBRE Lic# 00956805



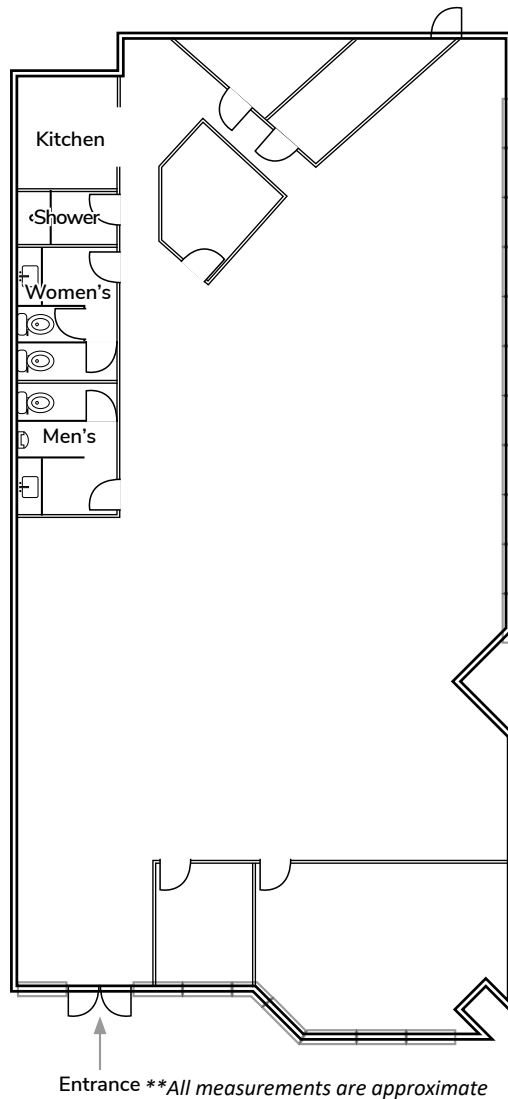
Barry Hendler
 barry.hendler@cushwake.com
 (760) 431-4219 | CalBRE Lic# 01008239

2355 Camino Vida Roble Floor Plan



- 8,115 RSF
- Reception
- Lobby
- Three (3) Private Executive Offices
- Ten (10) Private Offices
- Two Conference Rooms (1 large, 1 small)
- Kitchen
- Breakroom
- Two (2) Restrooms
- Warehouse
- Storage Room
- 10'x12' Roll-Up Door

2375 Camino Vida Roble Floor Plan



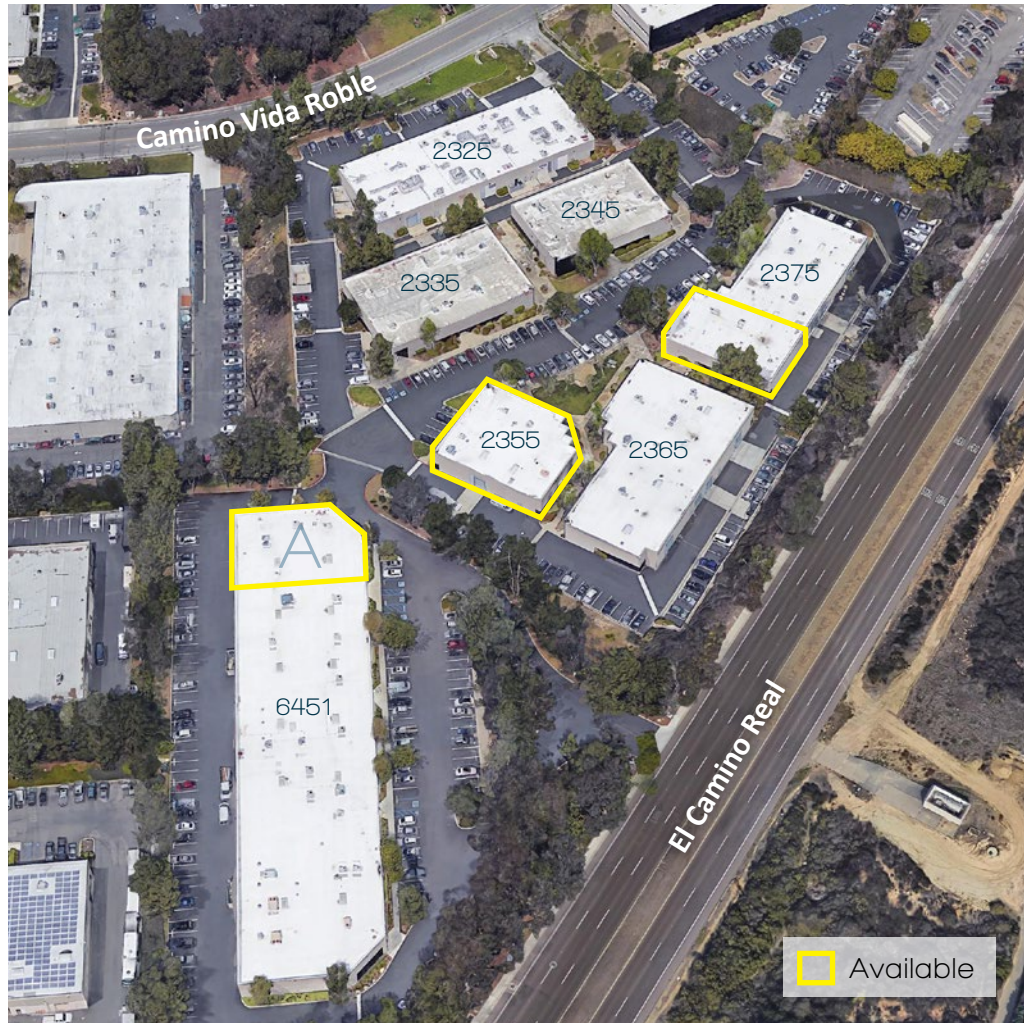
- 4,600 RSF office suite available
- Located in a prestigious Carlsbad location with close proximity to Palomar Airport Road and I-5
- New carpet throughout
- 2 private offices
- 1 large conference room
- Large bullpen area
- 1 storage room
- 1 I.T. room
- Kitchen
- 2 restrooms
- Shower
- Extensive window line
- Shaded park like setting with mature trees
- Outdoor seating area

6451 EL Camino Real, Suite A Floor Plan



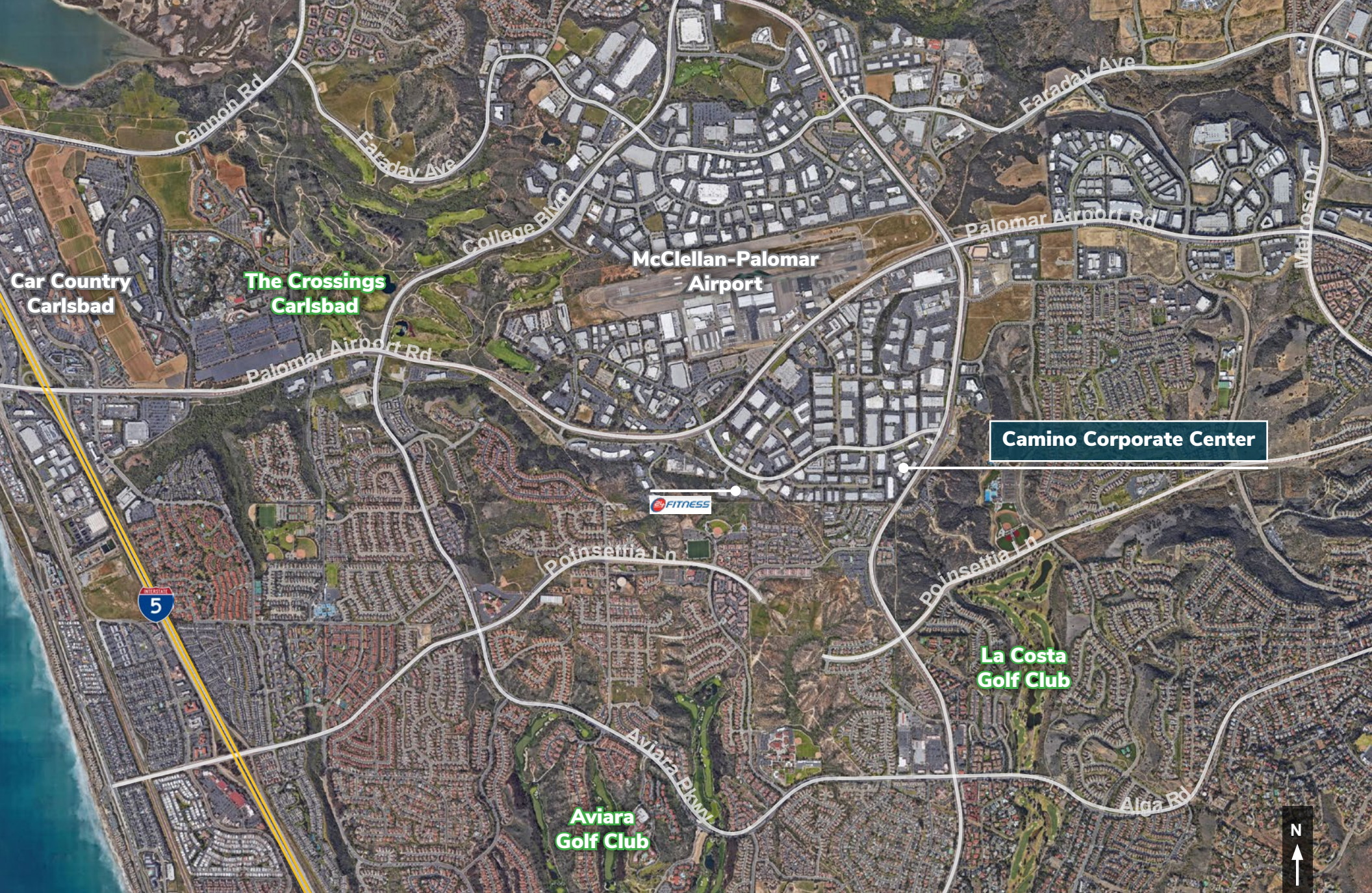
- 9,419 RSF
- Reception/Bullpen Area
- Ten (10) Private Offices with Support Staff Stations
- Restrooms
- Kitchen
- Two (2) Potential 10'x12' Roll-Up Door

Site Layout



[VIEW PROPERTY PHOTOS](#)

>>Click to view property photos<<



Camino Corporate Center

LEE & ASSOCIATES
COMMERCIAL REAL ESTATE SERVICES

Jeff Abramson
jabramson@lee-associates.com
(760) 929-7835 | CalBRE Lic# 00956805

CUSHMAN & WAKEFIELD

Barry Hendler
barry.hendler@cushwake.com
(760) 431-4219 | CalBRE Lic# 01008239