

**PLAZA
8300**



PROFESSIONAL OFFICE SPACE AVAILABLE FOR LEASE OR SALE

**8300 UTICA AVENUE
RANCHO CUCAMONGA, CALIFORNIA 91730**

FOR MORE INFORMATION, PLEASE CONTACT THE EXCLUSIVE LISTING AGENTS:

JEFF BISCHOFBERGER | Senior Vice President/Principal
909.373.2708 | jbischof@lee-assoc.com | DRE #01512151

LEE & ASSOCIATES - ONTARIO
3535 INLAND EMPIRE BLVD.,
ONTARIO | CA | 91764
909.989.7771 | lee-assoc.com
CORP ID#00976995

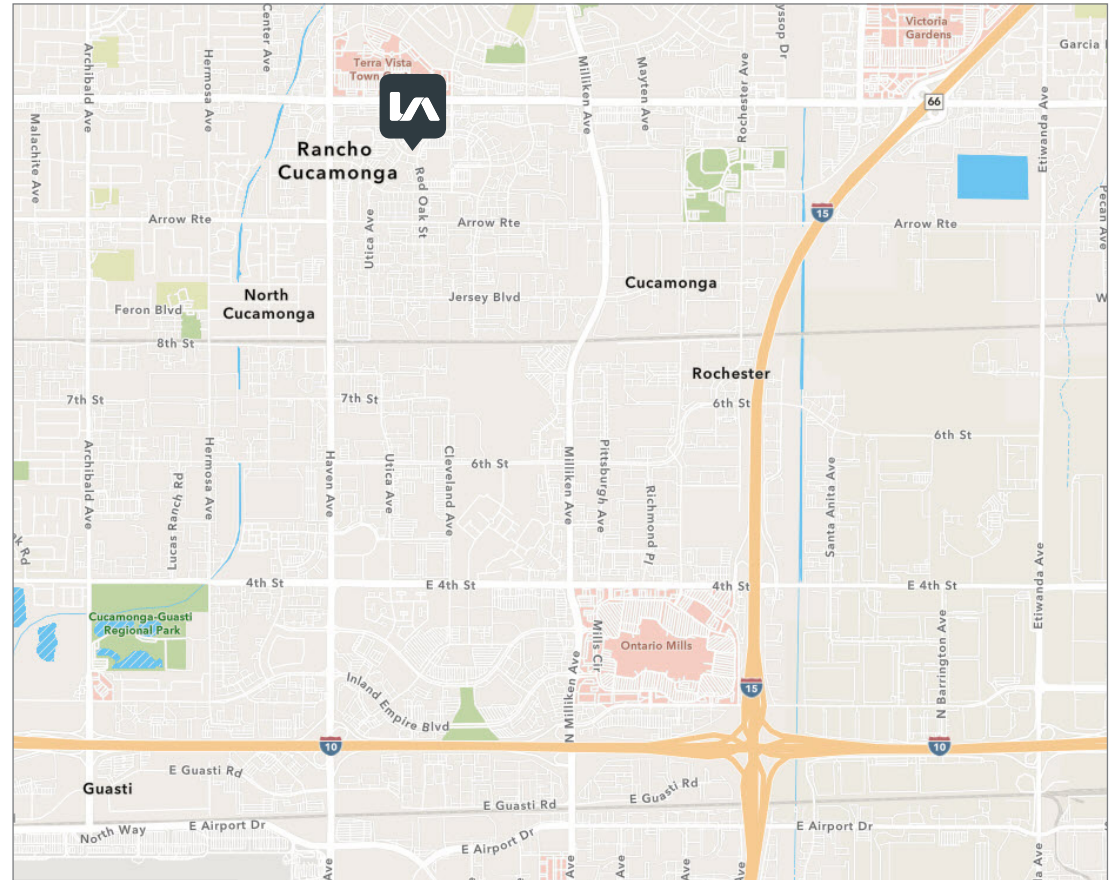
GREG MARTIN | Senior Vice President/Principal
909.373.2904 | gmartin@lee-assoc.com | DRE #01001749

All information furnished regarding property for sale, rental or financing is from sources deemed reliable, but no warranty or representation is made to the accuracy thereof and same is submitted to errors, omissions, change of price, rental or other conditions prior to sale, lease or financing or withdrawal without notice. No liability of any kind is to be imposed on the broker herein.

PLAZA 8300

- >> Immediate Occupancy Available
- >> ±452 SF to ±11,244 SF Available Now
- >> Entire Third Floor Available
- >> Adjacent to Rancho Cucamonga City Hall and the San Bernardino County Court House
- >> Common Area Conference Room
- >> Excellent Civic Center Location
- >> Elevator Served
- >> Flexible Suite Sizes
- >> Within Walking Distance to the New Haven City Market Place
- >> Minutes Away from Many Other Restaurants and Retail Shops
- >> Great Access to the I-10 Freeway
- >> Professionally Managed

LOCATION MAP



FOR MORE INFORMATION, PLEASE CONTACT THE EXCLUSIVE LISTING AGENTS:

JEFF BISCHOFBERGER | Senior Vice President/Principal
909.373.2708 | jbischof@lee-assoc.com | DRE #01512151

LEE & ASSOCIATES - ONTARIO
3535 INLAND EMPIRE BLVD.,
ONTARIO | CA | 91764
909.989.7771 | lee-assoc.com
CORP ID#00976995

GREG MARTIN | Senior Vice President/Principal
909.373.2904 | gmartin@lee-assoc.com | DRE #01001749

PLAZA 8300

FIRST FLOOR PRICING & AVAILABILITY

SUITE	SQUARE FEET	PRICE/ SQUARE FOOT	PRICE	LEASE RATE
105	±2,755	\$340	\$936,360	\$1.95 FSG
135	±4,006	\$340	\$1,362,040	\$1.95 FSG
155	±671	\$355	\$237,850	\$1.95 FSG
157	±872	\$355	\$309,205	\$1.95 FSG
159	±296	\$323	\$95,285	NFL
160	±259	\$356	\$91,297	NFL
173	±509	\$340	\$172,720	NFL
175	±593	\$315	\$186,795	\$1.95 FSG
191	±452	\$323	\$145,996	\$1.95 FSG
192	±370	\$323	\$119,187	\$1.95 FSG
193	±376	\$324	\$121,500	NFL
194	±498	\$314	\$156,058	NFL
195	±549	\$314	\$172,386	\$1.95 FSG
197	±498	\$314	\$153,232	NFL
199	±549	\$324	\$113,076	NFL

SOLD

LEASED

LEASED

LEASED

LEASED

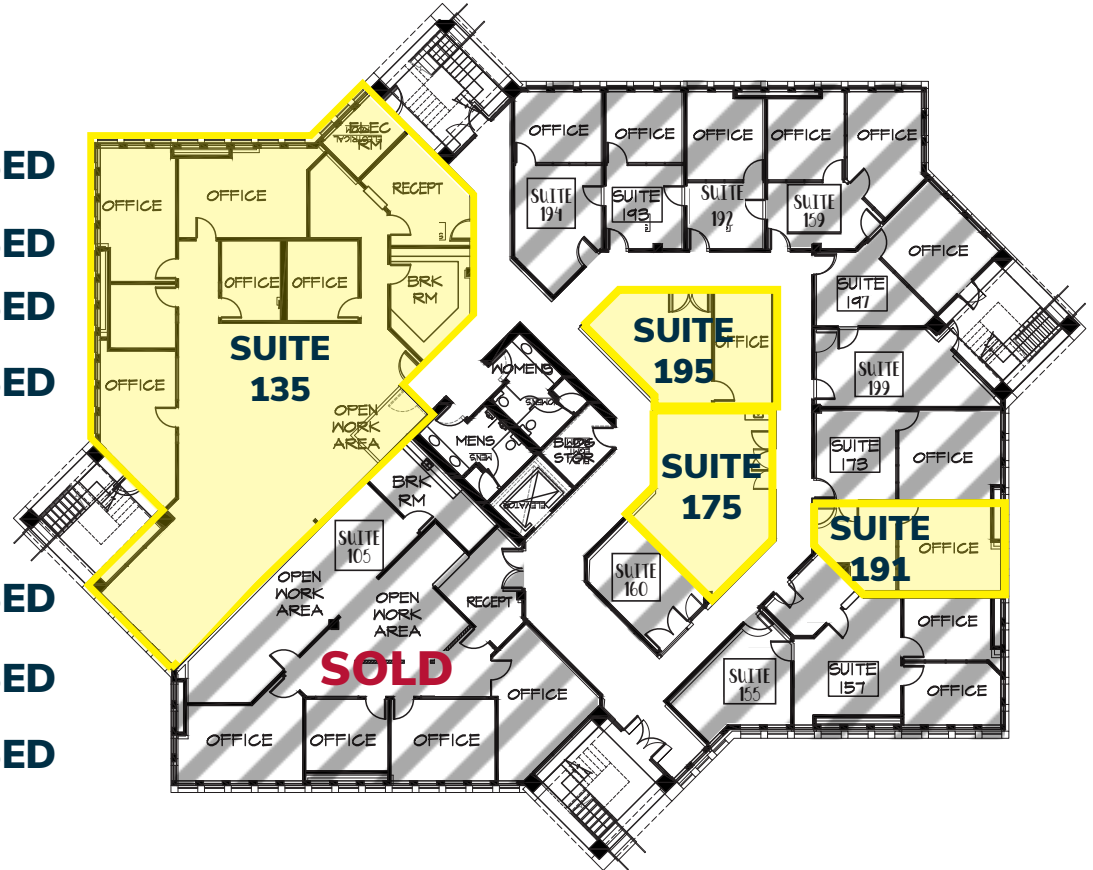
LEASED

LEASED

LEASED

LEASED

LEASED



FOR MORE INFORMATION, PLEASE CONTACT THE EXCLUSIVE LISTING AGENTS:

JEFF BISCHOFBERGER | Senior Vice President/Principal
909.373.2708 | jbischof@lee-assoc.com | DRE #01512151

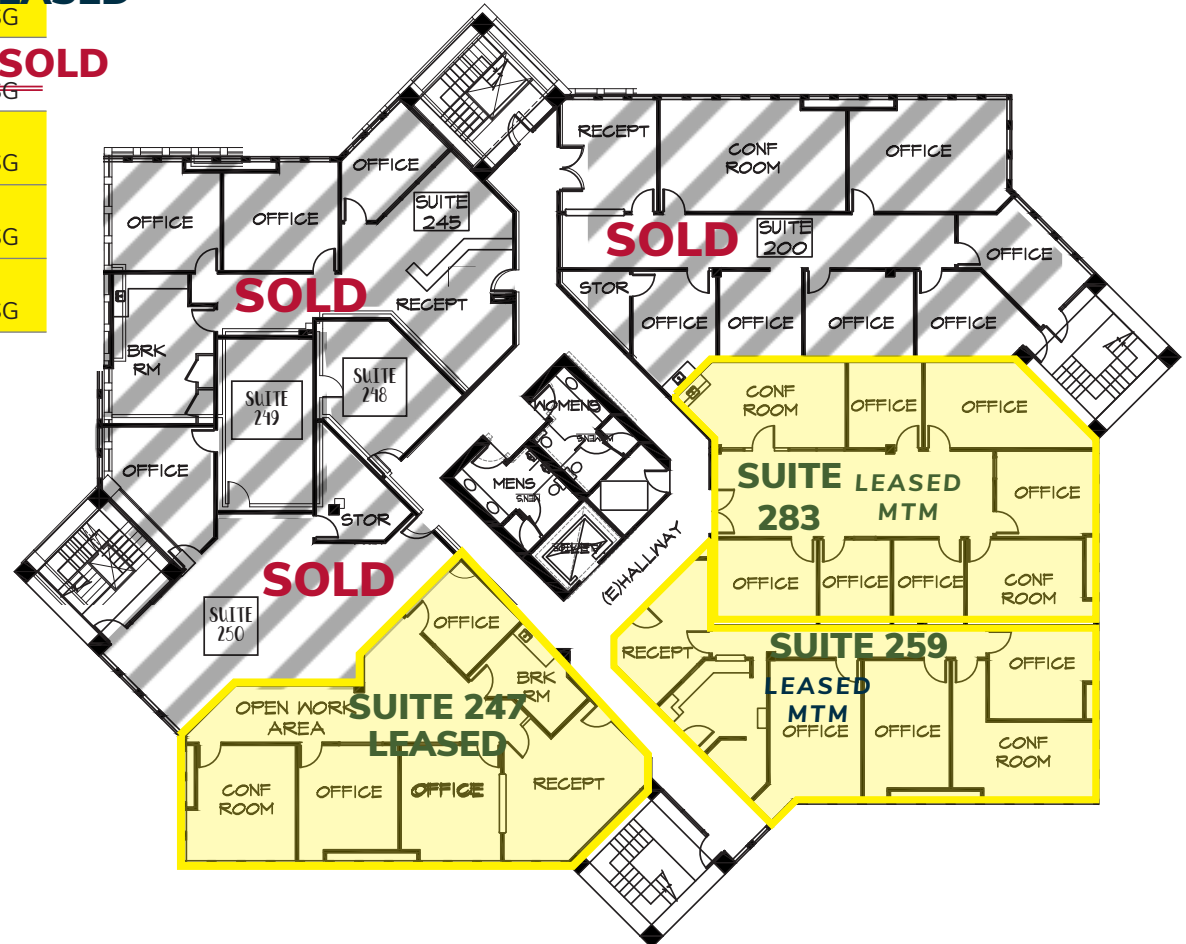
LEE & ASSOCIATES - ONTARIO
3535 INLAND EMPIRE BLVD.,
ONTARIO | CA | 91764
909.989.7771 | lee-assoc.com
CORP ID#00976995

GREG MARTIN | Senior Vice President/Principal
909.373.2904 | gmartin@lee-assoc.com | DRE #01001749

PLAZA 8300

SECOND FLOOR PRICING & AVAILABILITY

SUITE	SQUARE FEET	PRICE/ SQUARE FOOT	PRICE	LEASE RATE	
200	±3,067	\$335	\$1,027,780	\$1.95 FSG	SOLD
245	±2,073	\$330	\$684,090	\$1.95 FSG	SOLD
247	±2,192	\$325	\$712,400	\$1.95 FSG	LEASED
250	±1,541	\$30	\$508,860	\$1.95 FSG	SOLD
259	±1,866	\$330	\$615,780	\$1.95 FSG	
283	±2,445	\$325	\$794,625	\$1.95 FSG	
259 + 283	±4,311	\$315	\$1,357,965	\$1.95 FSG	



FOR MORE INFORMATION, PLEASE CONTACT THE EXCLUSIVE LISTING AGENTS:

JEFF BISCHOFBERGER | Senior Vice President/Principal
909.373.2708 | jbischof@lee-assoc.com | DRE #01512151

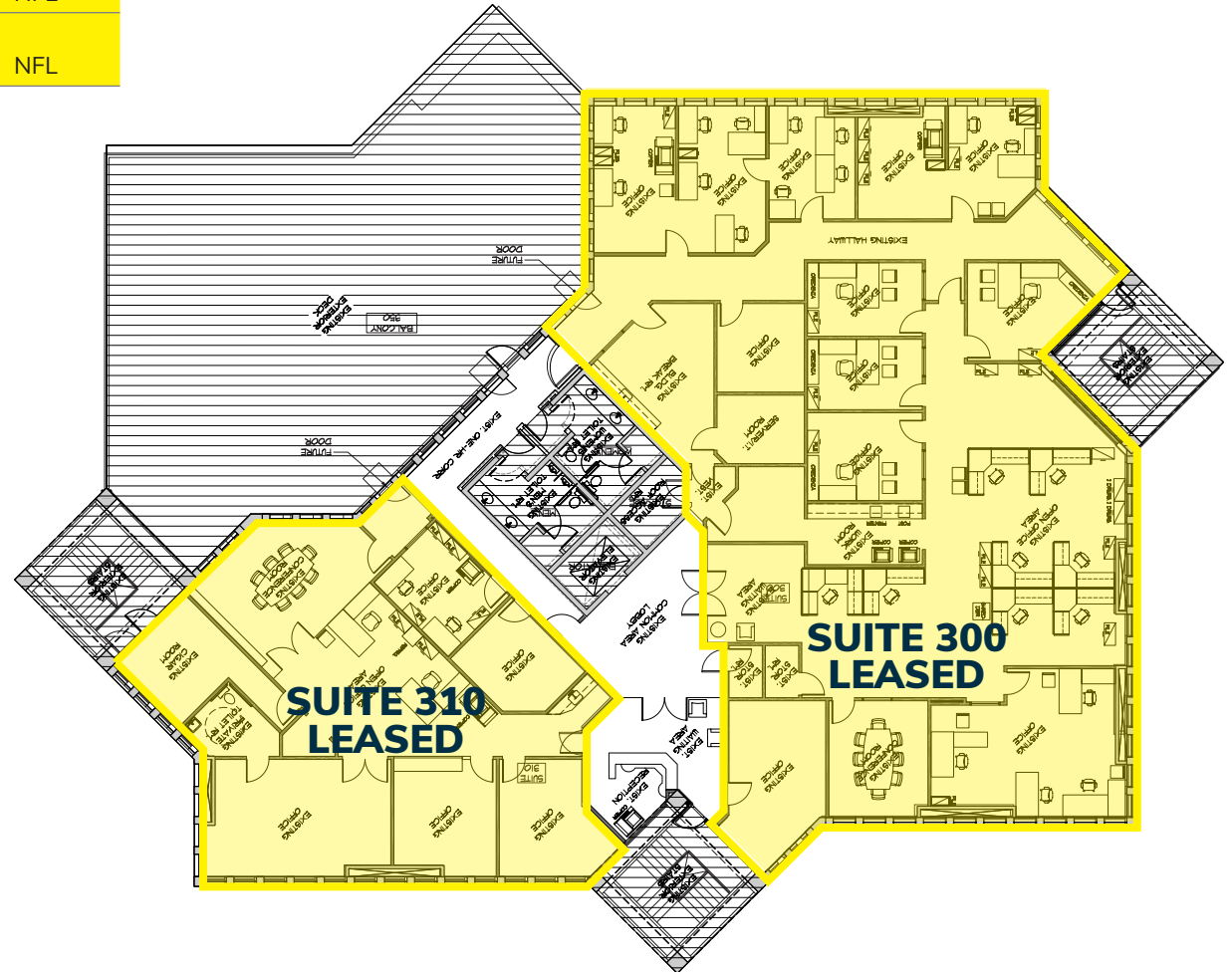
LEE & ASSOCIATES - ONTARIO
3535 INLAND EMPIRE BLVD.,
ONTARIO | CA 91764
909.989.7771 | lee-assoc.com
CORP ID#00976995

GREG MARTIN | Senior Vice President/Principal
909.373.2904 | gmartin@lee-assoc.com | DRE #01001749

PLAZA 8300

THIRD FLOOR PRICING & AVAILABILITY

SUITE	SQUARE FEET	PRICE/ SQUARE FOOT	PRICE	LEASE RATE	
300	±7,822	\$345	\$2,698,590	NFL	LEASED
310	±3,422	\$345	\$1,180,590	NFL	LEASED
300 + 310	±11,244	\$335	\$3,766,740	NFL	



FOR MORE INFORMATION, PLEASE CONTACT THE EXCLUSIVE LISTING AGENTS:

JEFF BISCHOFBERGER | Senior Vice President/Principal
909.373.2708 | jbischof@lee-assoc.com | DRE #01512151

LEE & ASSOCIATES - ONTARIO
3535 INLAND EMPIRE BLVD.,
ONTARIO | CA | 91764
909.989.7771 | lee-assoc.com
CORP ID#00976995

GREG MARTIN | Senior Vice President/Principal
909.373.2904 | gmartin@lee-assoc.com | DRE #01001749