

7 NORTH
4 FIGUEROA
6 STREET
2 LOS ANGELES

Office Space | FOR LEASE



7 NORTH
4 FIGUEROA
6 STREET
2 LOS ANGELES

Office Space | FOR LEASE

AVAILABLE SPACES

| | |
|-------------|------------------------|
| Rental Rate | \$2.85/SF/FSG/Month |
| Suite 200 | ±2,555 RSF (divisible) |
| Suite 201 | ±1,010 SF |

PROPERTY HIGHLIGHTS

- ▶ Architecturally significant 2-story beautifully maintained mid-century modern office building
- ▶ Highly efficient suites with creative finishes in a serene environment
- ▶ Centrally located just off the 134 freeway, close to Downtown LA, Eagle Rock, Pasadena, and Glendale



CONTACT
FOR MORE
INFORMATION

JOHN BERGER
626.240.2779
jberger@lee-associates.com
License ID 01799514

ELLIOTT GALLAHAN
626.240.2785
egallahan@lee-associates.com
License ID 02038135

LEE & ASSOCIATES
COMMERCIAL REAL ESTATE SERVICES
PASADENA

7 NORTH
4 FIGUEROA
6 STREET
2 LOS ANGELES

Office Space | FOR LEASE

PROPERTY INFORMATION

±15,114 SF

BUILDING SIZE

1966

YEAR BUILT



CONTACT
FOR MORE
INFORMATION

JOHN BERGER

626.240.2779

jberger@lee-associates.com

License ID 01799514

ELLIOTT GALLAHAN

626.240.2785

egallahan@lee-associates.com

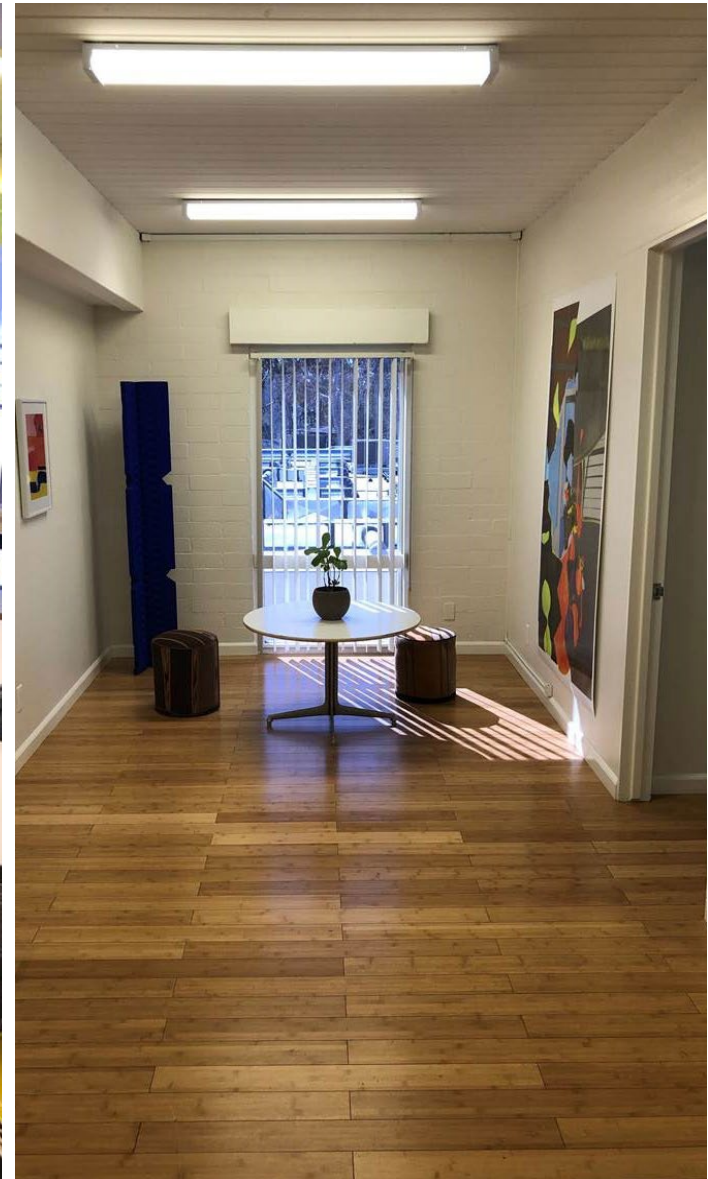
License ID 02038135

LEE & ASSOCIATES
COMMERCIAL REAL ESTATE SERVICES
PASADENA

This information supplied herein is from sources we deem reliable. It is provided without any representation, warranty, or guarantee, expressed or implied as to its accuracy. Prospective Buyer or Tenant should conduct an independent investigation and verification of all matters deemed to be material, including, but not limited to, statements of income and expenses. Consult your attorney, accountant, or other professional advisor.

7 NORTH
4 FIGUEROA
6 STREET
2 LOS ANGELES

Office Space | FOR LEASE



CONTACT
FOR MORE
INFORMATION

JOHN BERGER
626.240.2779
jberger@lee-associates.com
License ID 01799514

ELLIOTT GALLAHAN
626.240.2785
egallahan@lee-associates.com
License ID 02038135

LEE & ASSOCIATES
COMMERCIAL REAL ESTATE SERVICES
PASADENA

This information supplied herein is from sources we deem reliable. It is provided without any representation, warranty, or guarantee, expressed or implied as to its accuracy. Prospective Buyer or Tenant should conduct an independent investigation and verification of all matters deemed to be material, including, but not limited to, statements of income and expenses. Consult your attorney, accountant, or other professional advisor.

7 NORTH
4 FIGUEROA
6 STREET
2 LOS ANGELES

Office Space | FOR LEASE

Floor Plan | 2nd FLOOR



CONTACT
FOR MORE
INFORMATION

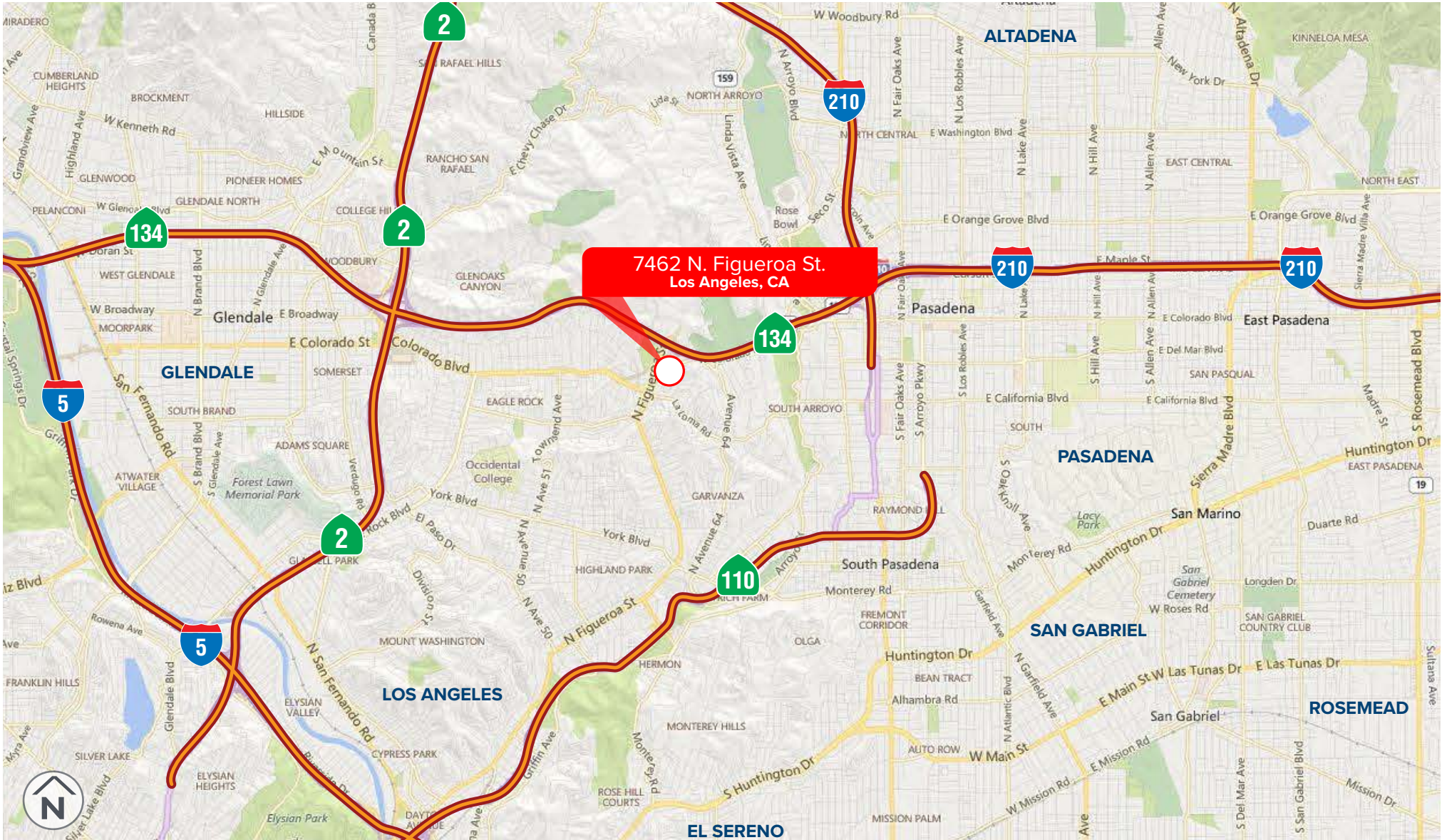
JOHN BERGER
626.240.2779
jberger@lee-associates.com
License ID 01799514

ELLIOTT GALLAHAN
626.240.2785
egallahan@lee-associates.com
License ID 02038135

LEE & ASSOCIATES
COMMERCIAL REAL ESTATE SERVICES
PASADENA

**7 NORTH
4 FIGUEROA
6 STREET
2 LOS ANGELES**

Office Space | **FOR LEASE**



**7462 N. Figueroa St.
Los Angeles, CA**

**CONTACT
FOR MORE
INFORMATION**

JOHN BERGER
626.240.2779
jberger@lee-associates.com
License ID 01799514

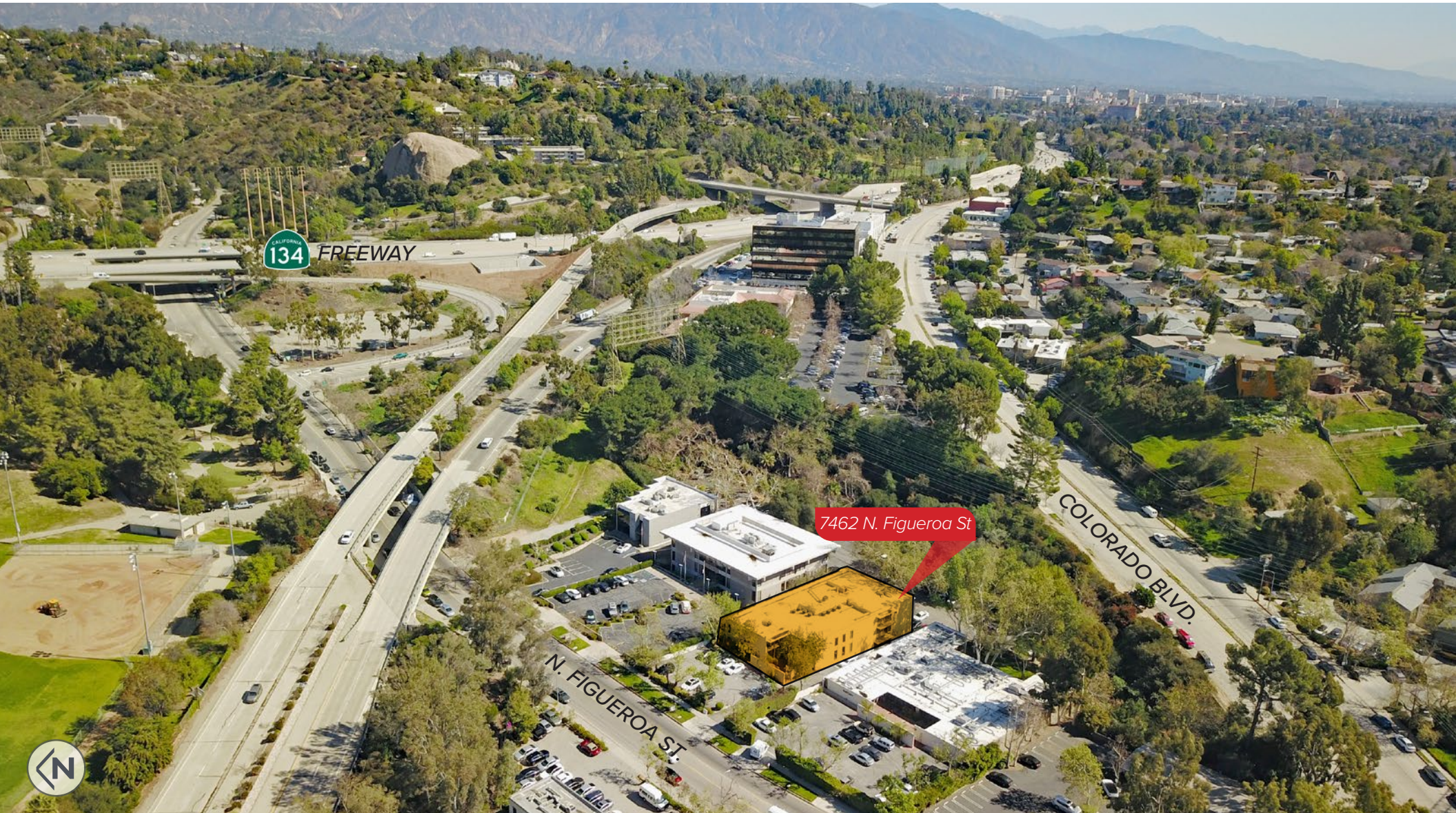
ELLIOTT GALLAHAN
626.240.2785
egallahan@lee-associates.com
License ID 02038135

**LEE &
ASSOCIATES**
COMMERCIAL REAL ESTATE SERVICES
PASADENA

This information supplied herein is from sources we deem reliable. It is provided without any representation, warranty, or guarantee, expressed or implied as to its accuracy. Prospective Buyer or Tenant should conduct an independent investigation and verification of all matters deemed to be material, including, but not limited to, statements of income and expenses. Consult your attorney, accountant, or other professional advisor.

7 NORTH
4 FIGUEROA
6 STREET
2 LOS ANGELES

Office Space | FOR LEASE



CONTACT
FOR MORE
INFORMATION

JOHN BERGER

626.240.2779

jberger@lee-associates.com

License ID 01799514

ELLIOTT GALLAHAN

626.240.2785

egallahan@lee-associates.com

License ID 02038135

LEE & ASSOCIATES
COMMERCIAL REAL ESTATE SERVICES
PASADENA

This information supplied herein is from sources we deem reliable. It is provided without any representation, warranty, or guarantee, expressed or implied as to its accuracy. Prospective Buyer or Tenant should conduct an independent investigation and verification of all matters deemed to be material, including, but not limited to, statements of income and expenses. Consult your attorney, accountant, or other professional advisor.



EXCLUSIVELY PRESENTED BY:

John Berger

President | License ID # 01799514

D \\ 626240.2779

E \\ jberger@lee-associates.com

Elliott Gallahan

Associate | License ID # 02038135

D \\ 626240.2785

E \\ egallahan@lee-associates.com

LEE & ASSOCIATES® - PASADENA, INC.

155 N. Lake Ave. Suite 430

Pasadena, CA 91101

Corporate ID 02059558

lee-pasadena.com



The information contained herein is obtained from sources believed to be reliable. However, we have not verified it and make no guarantees, warranties or representations as to the completeness or accuracy thereof. The presentation of this property is used for example and is submitted subject to errors, omissions, change of price or conditions, and is subject to prior sale, lease or withdrawal without notice.