

FOR SALE

8566

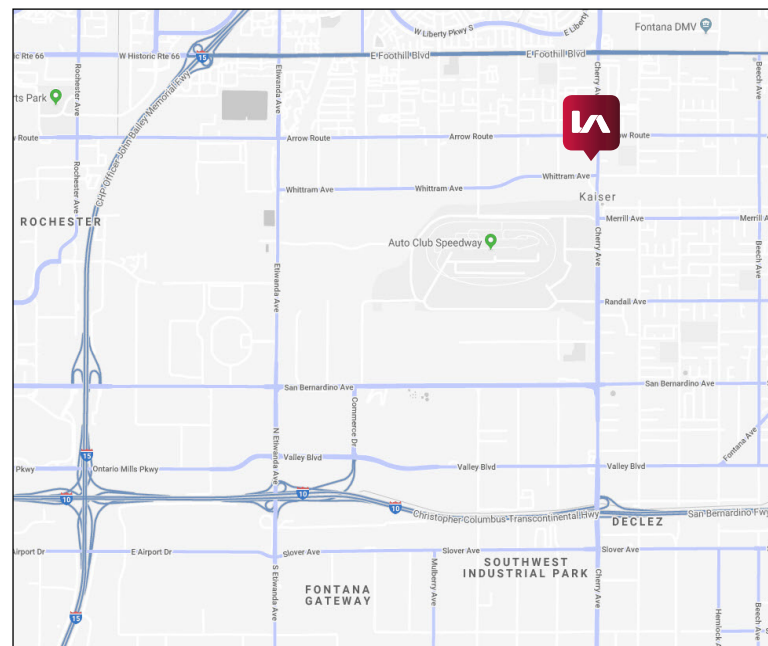
±1.82 ACRES OF INDUSTRIAL LAND

Cherry Avenue, Fontana, California 92335



SITE FEATURES

- ±1.82 Acres of Industrial Land
- APN: 0230-131-10
- Zoning: M-2 General Industrial
- Utilities to Site (Except Sewer)
- Great Development / Owner-User Opportunity
- Approximately 132' Frontage on Cherry Avenue
- ±1,064 SF House Currently on Property
- Close Proximity to the I-10, I-15 and CA-210 Freeways
- Currently Leased until June 14, 2019 at \$4,000/Mo.



FOR MORE INFORMATION PLEASE CONTACT:

Lee & Associates® - Ontario
3535 Inland Empire Blvd, Ontario, CA 91764
909.989.7771 | lee-assoc.com
Corp ID 00976995

Don Kazanjian, President
D 909.373.2929
dkazanjian@lee-assoc.com
DRE #00860886

John Mulrooney, Senior Vice President
D 909.373.2971
jmulrooney@lee-assoc.com
DRE #00839176

All information furnished regarding property for sale, rental or financing is from sources deemed reliable, but no warranty or representation is made to the accuracy thereof and same is submitted to errors, omissions, change of price, rental or other conditions prior to sale, lease or financing or withdrawal without notice. No liability of any kind is to be imposed on the broker herein.

FOR SALE

8566

±1.82 ACRES OF INDUSTRIAL LAND

Cherry Avenue, Fontana, California 92335



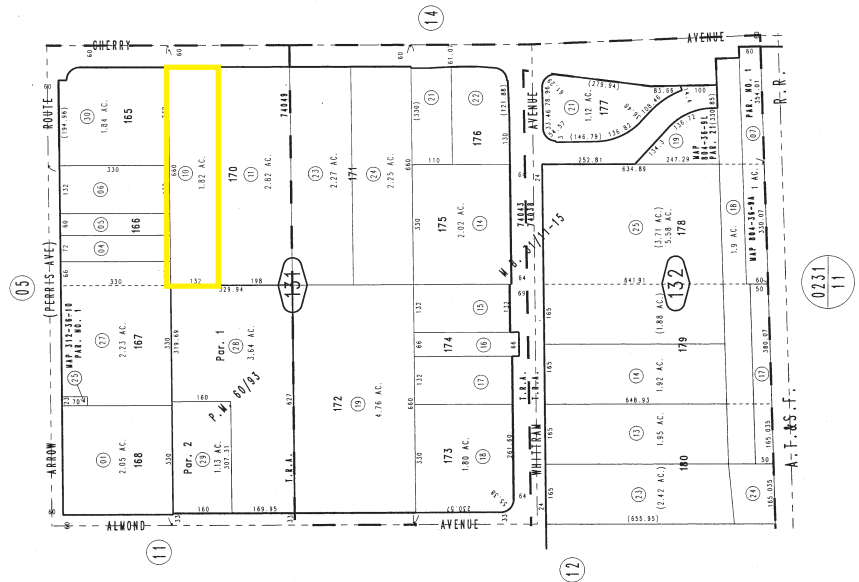
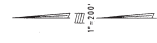
THIS MAP IS FOR THE PURPOSE OF AD VALOREM TAXATION ONLY.



Ptn. Fontana Arrow Route Tract No. 2102
M.B. 31/11-15

Fontana Unified Tax Rate Area
74038 74043
74049

0230-13



February 2004 Parcel Map No. 6328, P.M. 60/93

Ptn. S.E.1/4, Sec. 10
T.1S., R.6W.

Assessor's Map
Book 0230 Page 13
San Bernardino County

MAP 03 2018
REVISED
02/09/18 CW

FOR MORE INFORMATION PLEASE CONTACT:

Lee & Associates® - Ontario
3535 Inland Empire Blvd, Ontario, CA 91764
909.989.7771 | lee-assoc.com
Corp ID 00976995

Don Kazanjian, President
D 909.373.2929
dkazanjian@lee-assoc.com
DRE #00860886

John Mulrooney, Senior Vice President
D 909.373.2971
jmulrooney@lee-assoc.com
DRE #00839176

All information furnished regarding property for sale, rental or financing is from sources deemed reliable, but no warranty or representation is made to the accuracy thereof and same is submitted to errors, omissions, change of price, rental or other conditions prior to sale, lease or financing or withdrawal without notice. No liability of any kind is to be imposed on the broker herein.