



18952 MACARTHUR



18872 MACARTHUR

COLTON PLAZA
18872 MacArthur
&
18952 MacArthur
IN IRVINE, CA



PROJECT FEATURES

- Twin 4-story office buildings totaling 100,000 square feet
- Prominent MacArthur Blvd. frontage with unparalleled access to OC/John Wayne Airport
- Immediate access to the 405, 55 and 73 Freeways
- Adjacent to numerous amenities including hotels, restaurants, financial institutions, and John Wayne Airport
- Campus setting with abundant surface parking and lush park-like areas
- Proactive, attentive ownership

No warranty or representation is made to the accuracy of the foregoing information. Terms of sale or lease and availability are subject to change or withdrawal without notice.



LEE &
ASSOCIATES

COMMERCIAL REAL ESTATE SERVICES
FOR MORE INFORMATION, CONTACT:

MATT FRYER
Senior Vice President
BRE #01333079
949.790.3122
mfryer@leeirvine.com

DAVE SMITH
Senior Vice President
BRE #01195186
949.790.3134
dsmith@leeirvine.com

TRAVIS WATTS
Senior Associate
BRE #01927498
949.790.3140
twatts@leeirvine.com

OWNED & PROFESSIONALLY MANAGED BY:

CAMPBOR
PARTNERS

COLTON PLAZA
 18872 MacArthur
 &
 18952 MacArthur
 IN IRVINE, CA

18872 MACARTHUR AVAILABILITIES

SUITE	SIZE	LEASE RATE	DESCRIPTION
100	±10,490 SF	\$2.00 FSG	Full Floor Available
200	±13,078 SF	\$2.00 FSG	Full Floor Available
300	±13,078 SF	\$2.00 FSG	Full Floor Available
400	±13,205 SF	\$2.00 FSG	Full Floor Available
Full Building	±50,000 SF	\$2.00 FSG	Full or Partial Building Available

18952 MACARTHUR AVAILABILITIES

SUITE	SIZE	LEASE RATE	DESCRIPTION
100	±10,490 SF	Call for Pricing	Full Floor Available
200	±13,078 SF	Call for Pricing	Full Floor Available
300	±3,655 SF	\$2.00 FSG	
305	±1,606 SF	\$2.00 FSG	
310	±1,402 SF	Call for Pricing	
315	±2,803 SF	Call for Pricing	
330	±1,964 SF	\$2.00 FSG	
350	±1,530 SF	\$2.00 FSG	
360	±1,015 SF	Call for Pricing	
400	±1,317 SF	\$2.00 FSG	
410	±1,929 SF	\$2.00 FSG	
420	±881 SF	\$2.00 FSG	
430	±1,860 SF	Call for Pricing	
440	±1,154 SF	Call for Pricing	
450	±1,945 SF	\$2.00 FSG	
460	±2,246 SF	\$2.00 FSG	
470	±2,009 SF	\$2.00 FSG	



EXCLUSIVELY LISTED BY:



MATT FRYER
 Senior Vice President
 Lic #01333079
 949.790.3122
 mfrayer@leeirvine.com

DAVE SMITH
 Senior Vice President
 Lic #01195186
 949.790.3134
 dsmith@leeirvine.com

TRAVIS WATTS
 Senior Associate
 Lic #01927498
 949.790.3140
 twatts@leeirvine.com

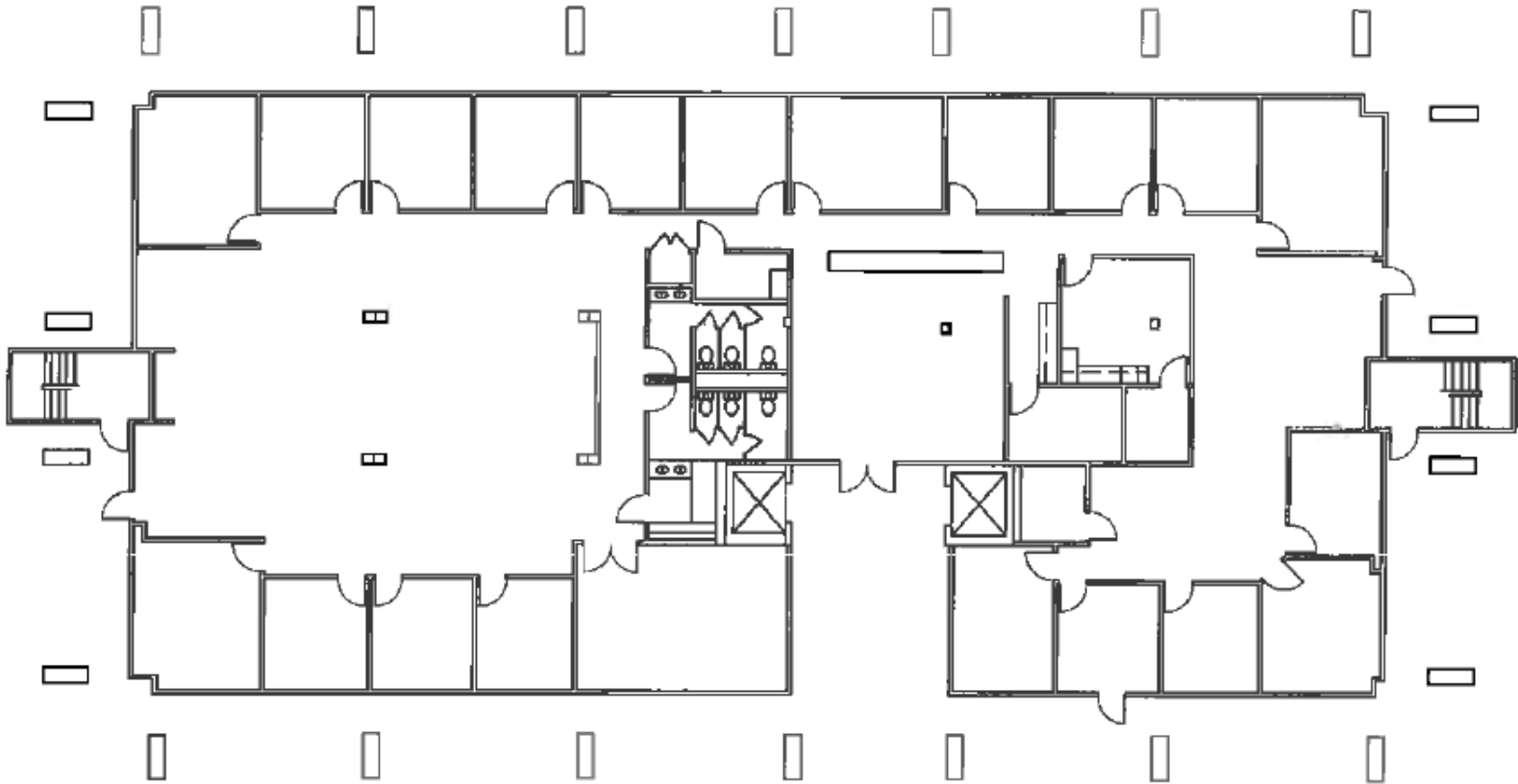
OWNED & MANAGED BY:





COLTON PLAZA
 18872 MacArthur
 &
 18952 MacArthur
 IN IRVINE, CA

18872 MACARTHUR, FIRST FLOOR ±10,490 SF



EXCLUSIVELY LISTED BY:



MATT FRYER
 Senior Vice President
 Lic #01333079
 949.790.3122
 mfryer@leeirvine.com

DAVE SMITH
 Senior Vice President
 Lic #01195186
 949.790.3134
 dsmith@leeirvine.com

TRAVIS WATTS
 Senior Associate
 Lic #01927498
 949.790.3140
 twatts@leeirvine.com

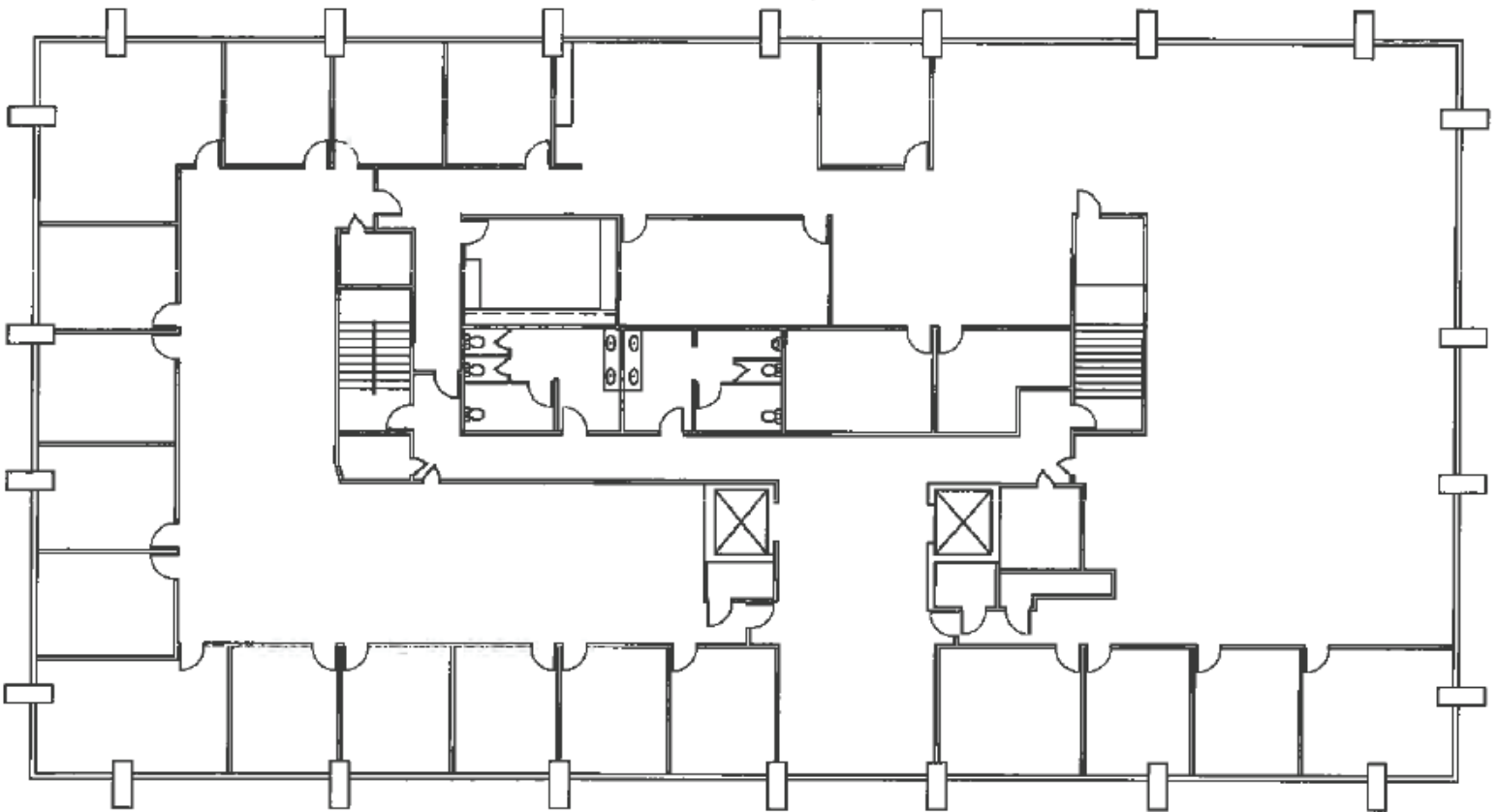
OWNED & MANAGED BY:





COLTON PLAZA
18872 MacArthur
&
18952 MacArthur
IN IRVINE, CA

18872 MACARTHUR, SECOND FLOOR ±13,078 SF



EXCLUSIVELY LISTED BY:



MATT FRYER
Senior Vice President
Lic #01333079
949.790.3122
mfryer@leeirvine.com

DAVE SMITH
Senior Vice President
Lic #01195186
949.790.3134
dsmith@leeirvine.com

TRAVIS WATTS
Senior Associate
Lic #01927498
949.790.3140
twatts@leeirvine.com

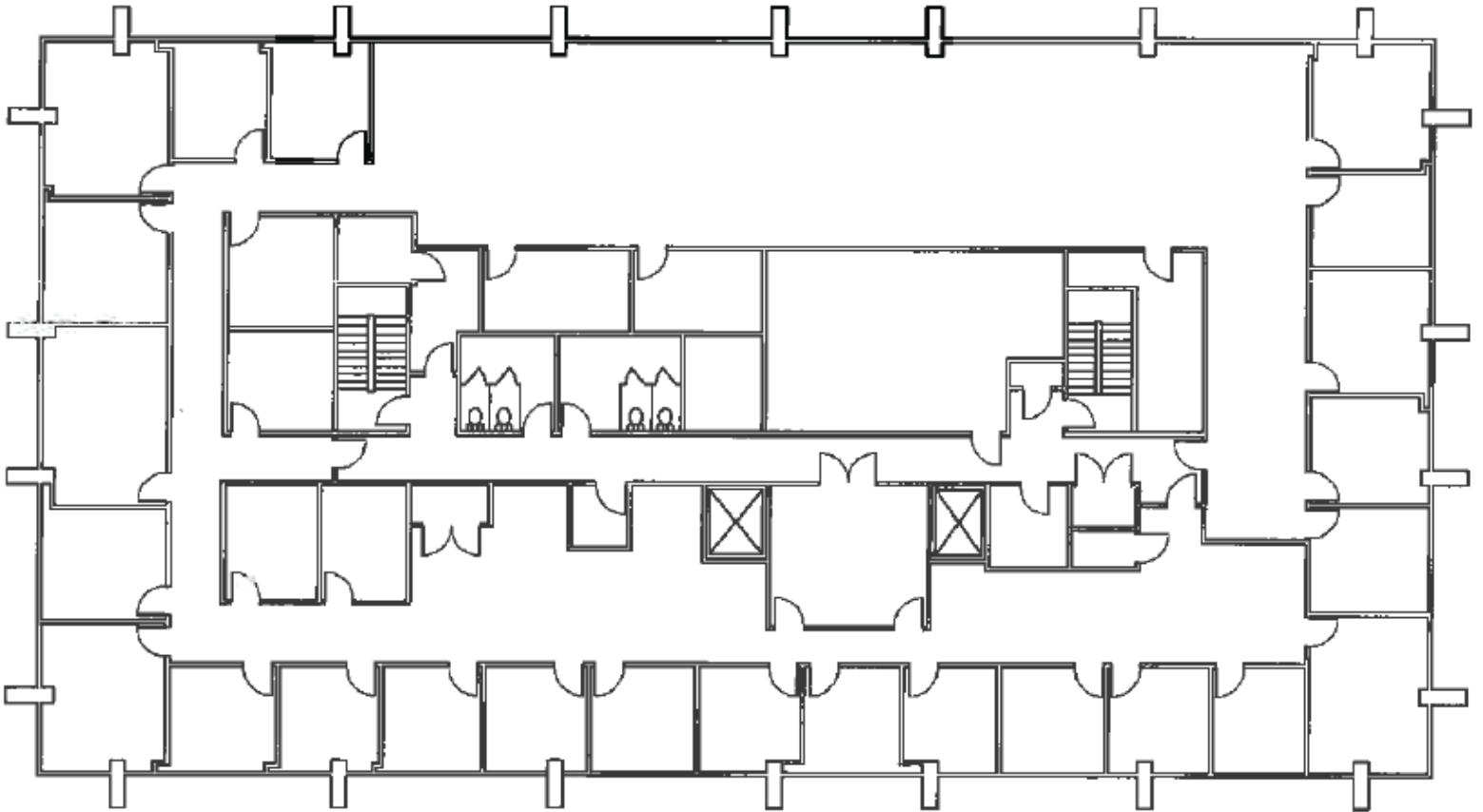
OWNED & MANAGED BY:





COLTON PLAZA
 18872 MacArthur
 &
 18952 MacArthur
 IN IRVINE, CA

18872 MACARTHUR, THIRD FLOOR ±13,078 SF



EXCLUSIVELY LISTED BY:



MATT FRYER
 Senior Vice President
 Lic #01333079
 949.790.3122
 mfryer@leeirvine.com

DAVE SMITH
 Senior Vice President
 Lic #01195186
 949.790.3134
 dsmith@leeirvine.com

TRAVIS WATTS
 Senior Associate
 Lic #01927498
 949.790.3140
 twatts@leeirvine.com

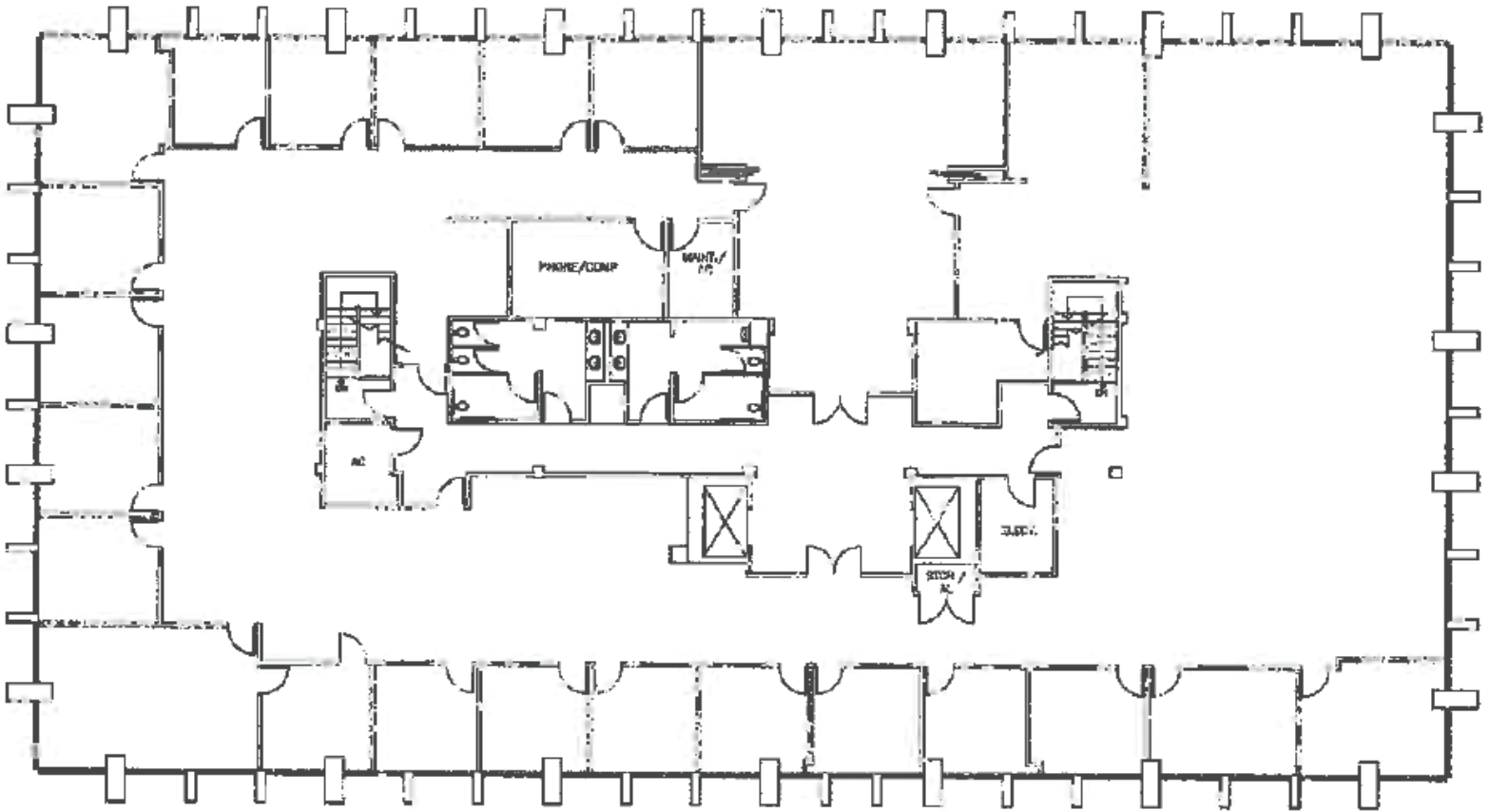
OWNED & MANAGED BY:





COLTON PLAZA
 18872 MacArthur
 &
 18952 MacArthur
 IN IRVINE, CA

18872 MACARTHUR, FOURTH FLOOR ±13,205 SF



EXCLUSIVELY LISTED BY:



MATT FRYER
 Senior Vice President
 Lic #01333079
 949.790.3122
 mfryer@leeirvine.com

DAVE SMITH
 Senior Vice President
 Lic #01195186
 949.790.3134
 dsmith@leeirvine.com

TRAVIS WATTS
 Senior Associate
 Lic #01927498
 949.790.3140
 twatts@leeirvine.com

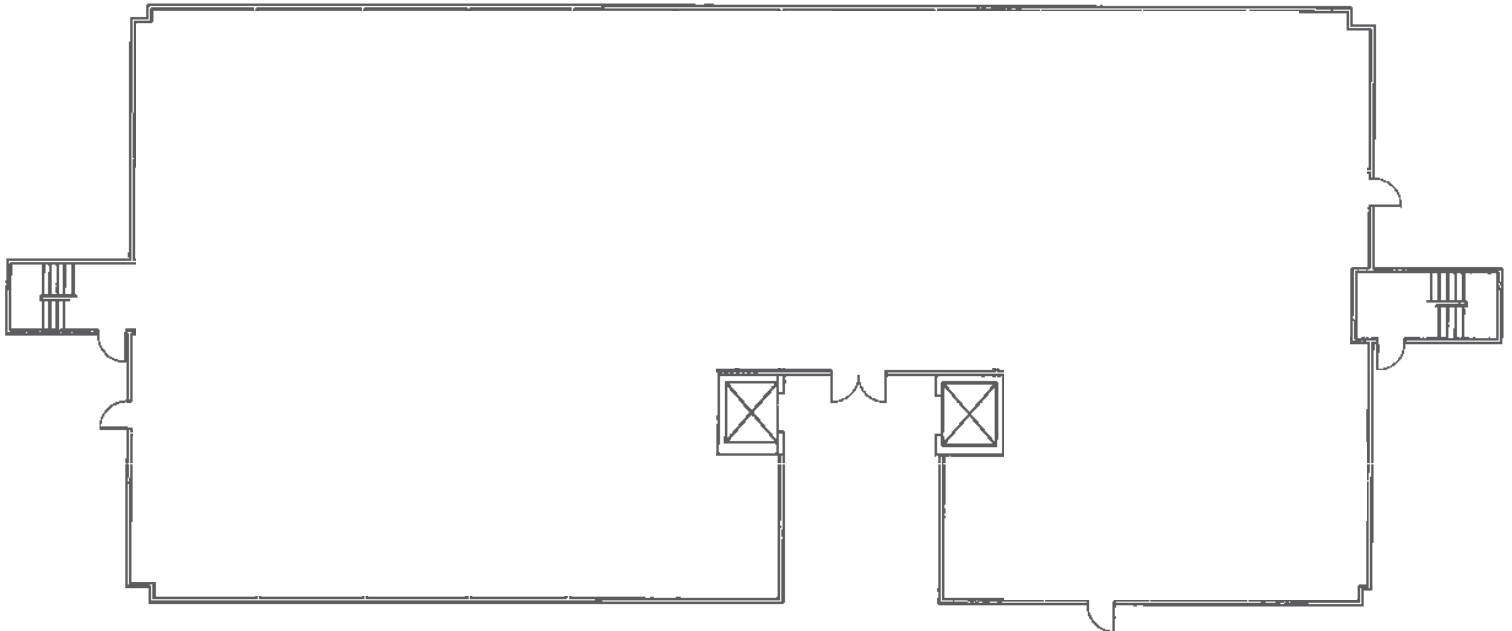
OWNED & MANAGED BY:





COLTON PLAZA
 18872 MacArthur
 &
 18952 MacArthur
 IN IRVINE, CA

18952 MACARTHUR, FIRST FLOOR ±10,490 SF



EXCLUSIVELY LISTED BY:



COMMERCIAL REAL ESTATE SERVICES

MATT FRYER
 Senior Vice President
 Lic #01333079
 949.790.3122
 mfryer@leeirvine.com

DAVE SMITH
 Senior Vice President
 Lic #01195186
 949.790.3134
 dsmith@leeirvine.com

TRAVIS WATTS
 Senior Associate
 Lic #01927498
 949.790.3140
 twatts@leeirvine.com

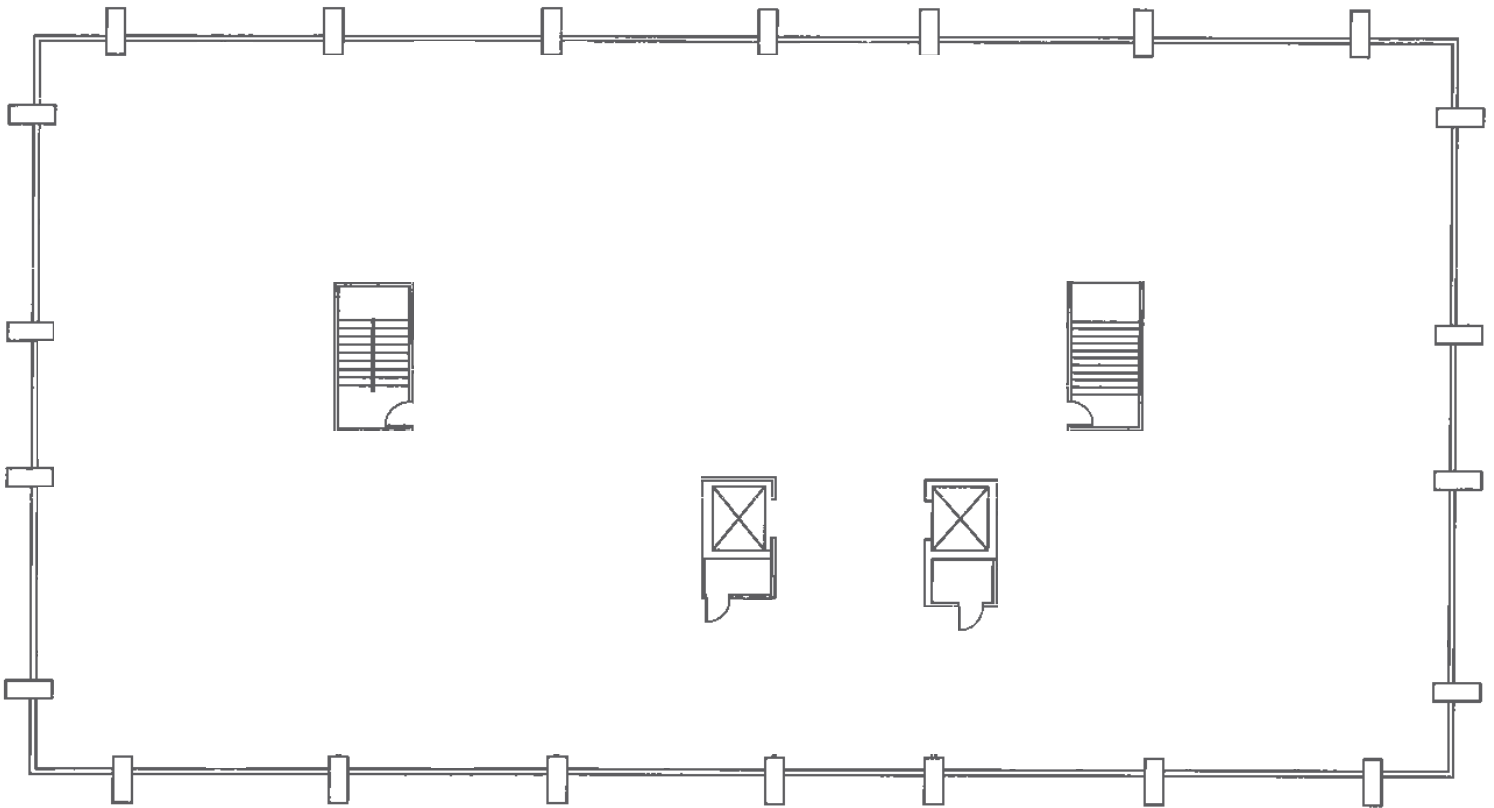
OWNED & MANAGED BY:





COLTON PLAZA
 18872 MacArthur
 &
 18952 MacArthur
 IN IRVINE, CA

18952 MACARTHUR, SECOND FLOOR ±13,078 SF



EXCLUSIVELY LISTED BY:



MATT FRYER
 Senior Vice President
 Lic #01333079
 949.790.3122
 mfryer@leeirvine.com

DAVE SMITH
 Senior Vice President
 Lic #01195186
 949.790.3134
 dsmith@leeirvine.com

TRAVIS WATTS
 Senior Associate
 Lic #01927498
 949.790.3140
 twatts@leeirvine.com

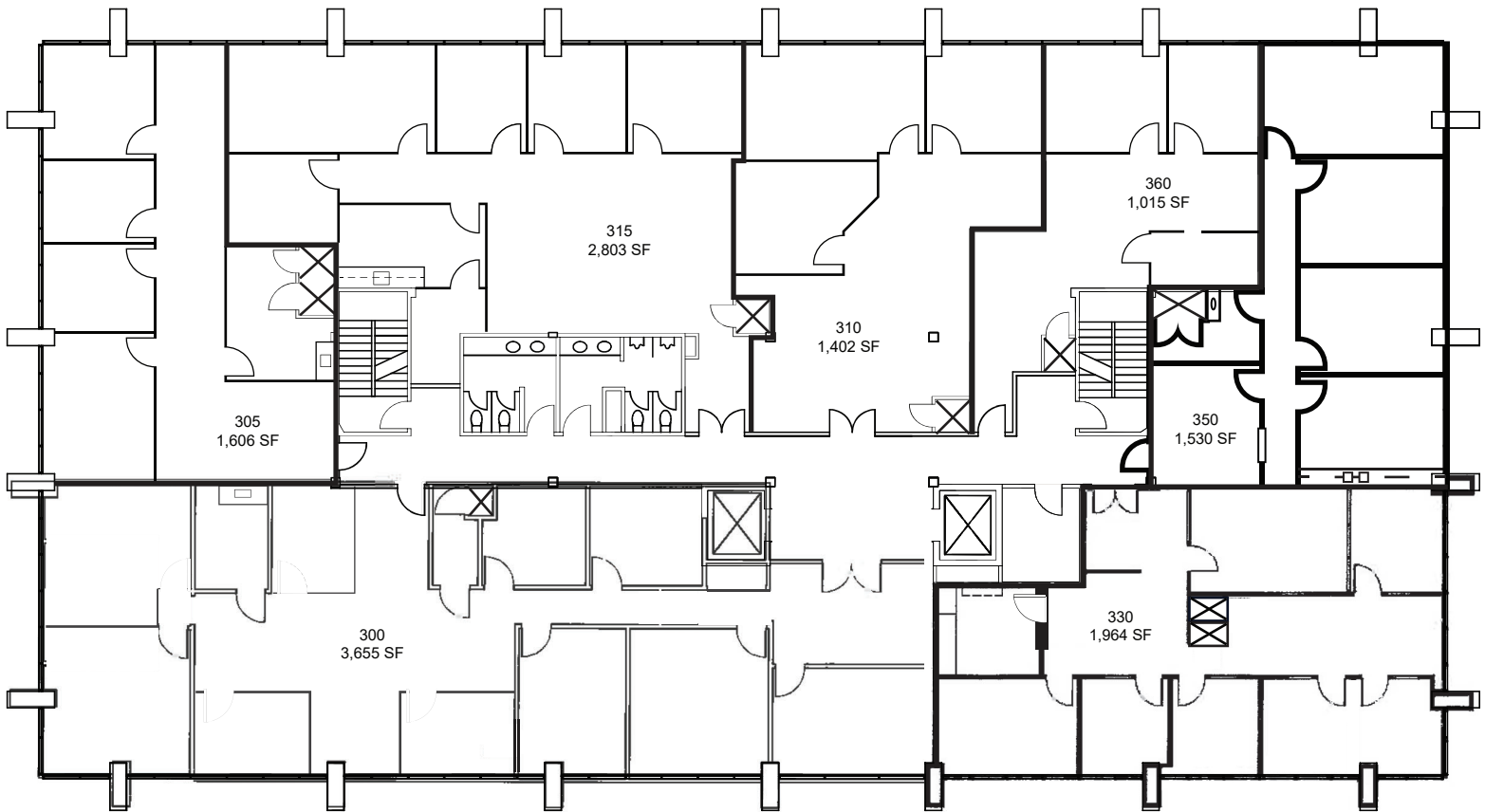
OWNED & MANAGED BY:





COLTON PLAZA
 18872 MacArthur
 &
 18952 MacArthur
 IN IRVINE, CA

18952 MACARTHUR, THIRD FLOOR ±13,975 SF



EXCLUSIVELY LISTED BY:



MATT FRYER
 Senior Vice President
 Lic #01333079
 949.790.3122
 mfrayer@leeirvine.com

DAVE SMITH
 Senior Vice President
 Lic #01195186
 949.790.3134
 dsmith@leeirvine.com

TRAVIS WATTS
 Senior Associate
 Lic #01927498
 949.790.3140
 twatts@leeirvine.com

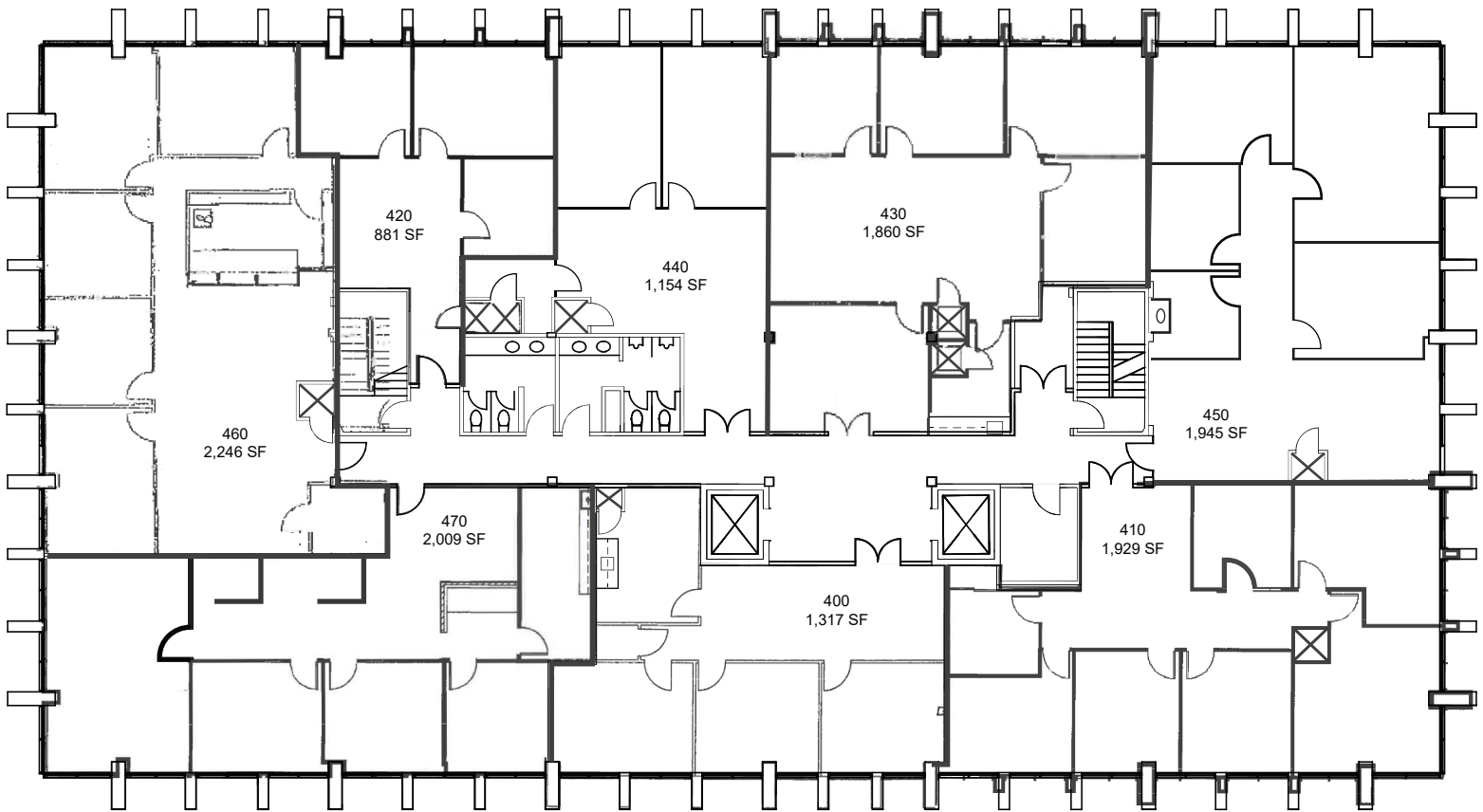
OWNED & MANAGED BY:





COLTON PLAZA
 18872 MacArthur
 &
 18952 MacArthur
 IN IRVINE, CA

18952 MACARTHUR, FOURTH FLOOR ±13,341 SF



EXCLUSIVELY LISTED BY:



MATT FRYER
 Senior Vice President
 Lic #01333079
 949.790.3122
 mfrayer@leeirvine.com

DAVE SMITH
 Senior Vice President
 Lic #01195186
 949.790.3134
 dsmith@leeirvine.com

TRAVIS WATTS
 Senior Associate
 Lic #01927498
 949.790.3140
 twatts@leeirvine.com

OWNED & MANAGED BY:

