

# FREESTANDING FLEX BUILDING



[CLICK HERE FOR  
VIRTUAL TOUR](#)



1550 17TH STREET  
SANTA MONICA, CA 90404

PREMISES ± 5,474 SF  
RENT Year 1: \$1.95/SF, MG  
Years 2 - 5: Negotiable

OCCUPANCY Immediate

TERM 3 - 5 Years

PARKING Private, Secured Parking Lot  
3/1,000 (\$75/Space/Month)

- FEATURES
- **RECENTLY RENOVATED**
  - No Elevators, No Shared Hallways, Easy Access Directly to the Offices
  - Travel Time Between Parking and Reaching Your Office is More Efficient Than High-rise Office Buildings with Long Elevator Lines
  - New Modern Kitchen
  - Hardwood Floors
  - Second Floor Private Patio
  - Open Floor Plan, Private Offices and Conference Rooms
  - Polished Concrete Floors
  - High Exposed Ceilings
  - Abundant Natural Light
  - Roll Up Door Leading to Patio
  - Private & Secure Parking Lot with Electric Gate
  - Walking Distance to Nearby Amenities and the 17th Street Metro Station

CONTACT James Wilson Dylan Mahood  
310.899.2708 310.899.2706  
jwilson@leewestla.com dmahood@leewestla.com  
AGT DRE 00883324 AGT DRE 02027002



1508 17th Street, Santa Monica, CA 90404  
310.899.2700 | www.leewestla.com | dre 01222000

No warranty or representation is made to the accuracy of the foregoing information.  
Terms of sale or lease are subject to change or withdrawal without notice.



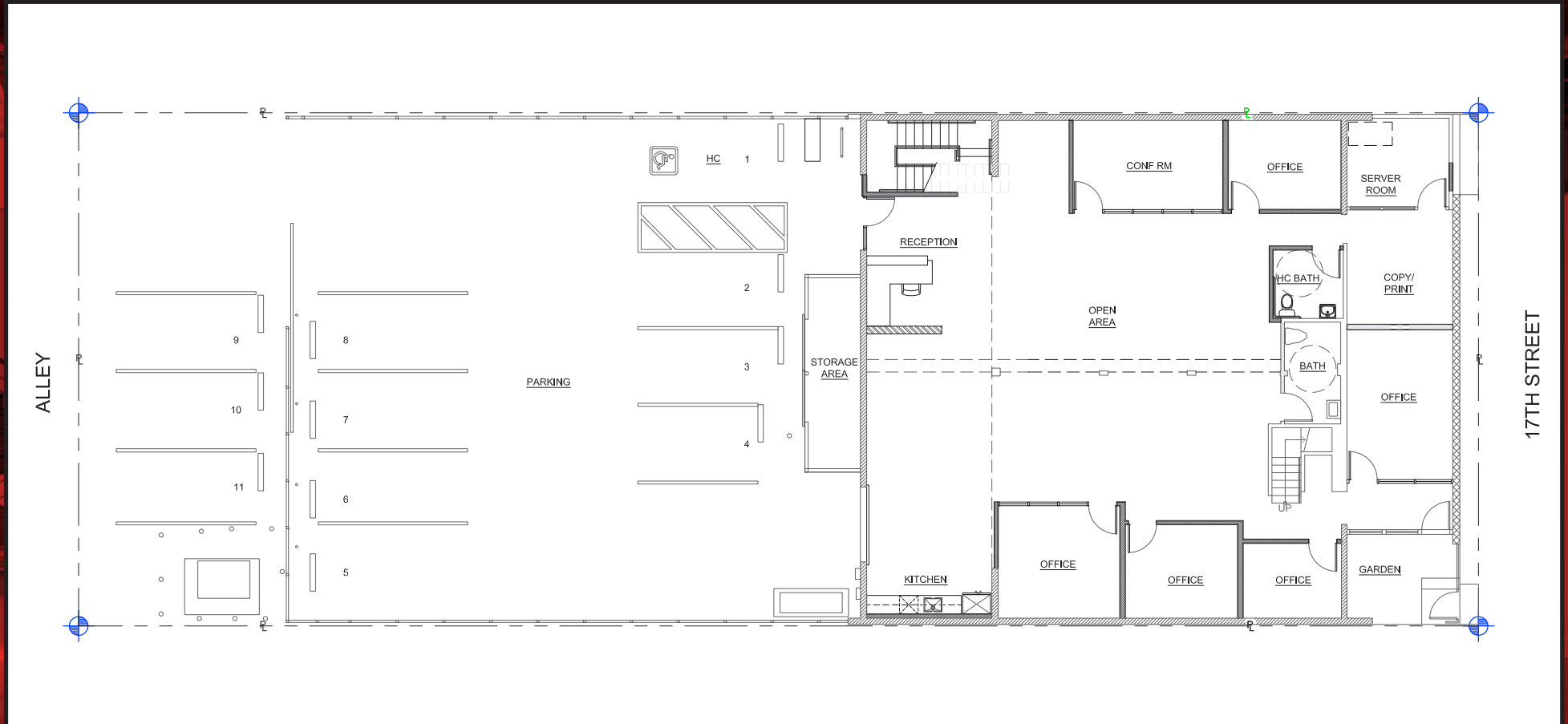
1550 17TH STREET  
SANTA MONICA, CA 90404



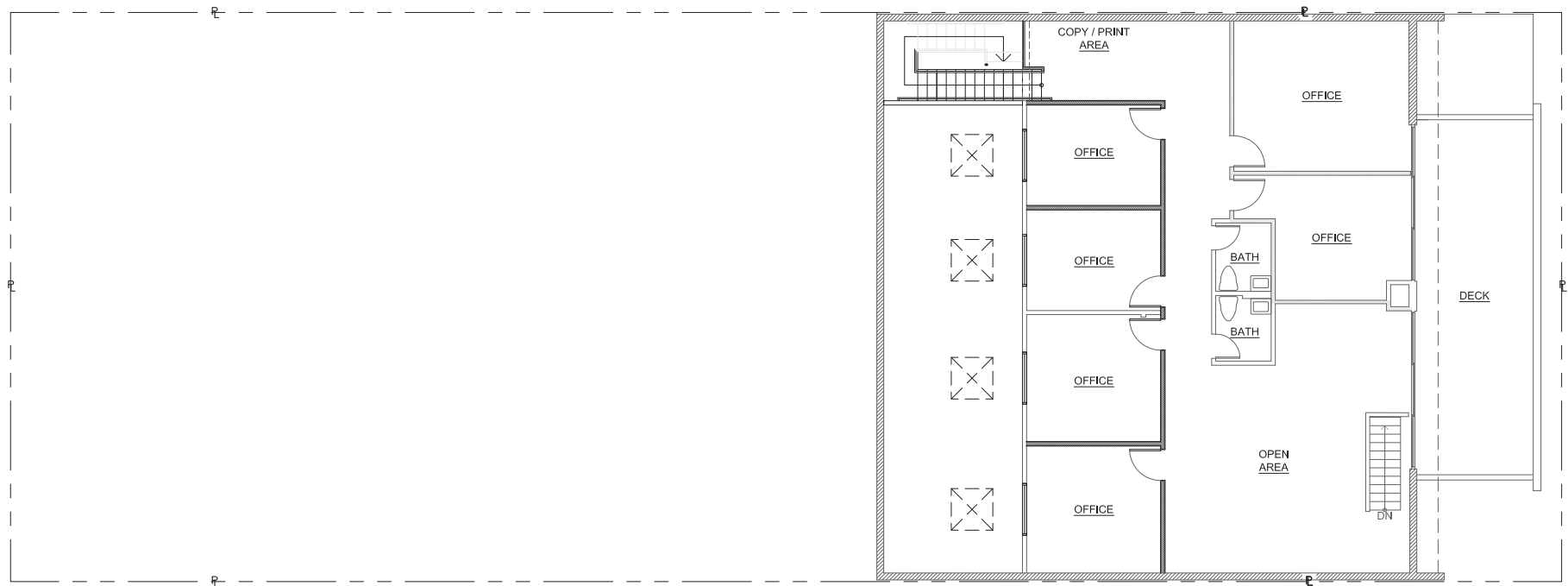




# FLOOR PLAN - FIRST FLOOR



# FLOOR PLAN - SECOND FLOOR



James Wilson  
310.899.2708  
jwilson@leewestla.com  
AGT DRE 00883324

Dylan Mahood  
310.899.2706  
dmahood@leewestla.com  
AGT DRE 02027002

# NEARBY TENANTS



James Wilson  
310.899.2708  
jwilson@leewestla.com  
AGT DRE 00883324

Dylan Mahood  
310.899.2706  
dmahood@leewestla.com  
AGT DRE 02027002