

PRIVATE HIGH-END STUDIO SPACE AVAILABLE FOR LEASE



1727 - 1731 BERKELEY STREET
SANTA MONICA, CA 90404



**1727 - 1731 BERKELEY STREET
SANTA MONICA, CA 90404**

PREMISES

Studio 2 ± 1,211 SF

RENT

\$4,000/Month, MG

TERM

6 Months - 5 Years

OCCUPANCY

Immediate

FEATURES

- Private Secure Studio
- High Height Ceilings
- Exposed Wooden Bow-Truss Ceilings
- Polished Concrete Floors
- High-End Tenant Mix in Building
- Individually Controlled HVAC Unit (No Shared Venting)
- Building Signage Available on Berkeley Street
- Easy Access to Olympic Blvd, 10 Fwy, Metro Stations, West LA
- Located in Santa Monica Media District
- Excellent Lighting Throughout
- Operable Torrance Steel Windows Facing Street

CONTACT

George Wilson
310.899.2738
gwilson@leewestla.com
AGT DRE 02090678

David Wilson
310.899.2707
dwilson@leewestla.com
AGT DRE 00822760

Brad McCoy
310.899.2730
bmccoy@leewestla.com
BKR DRE 01938098



A DIVISION OF



1508 17th Street, Santa Monica, CA | 310.899.2700
WWW.LEEWESTLA.COM | DRE 01222000

No warranty or representation is made to the accuracy of the foregoing information. Terms of sale or lease are subject to change or withdrawal without notice.



FLOOR PLAN

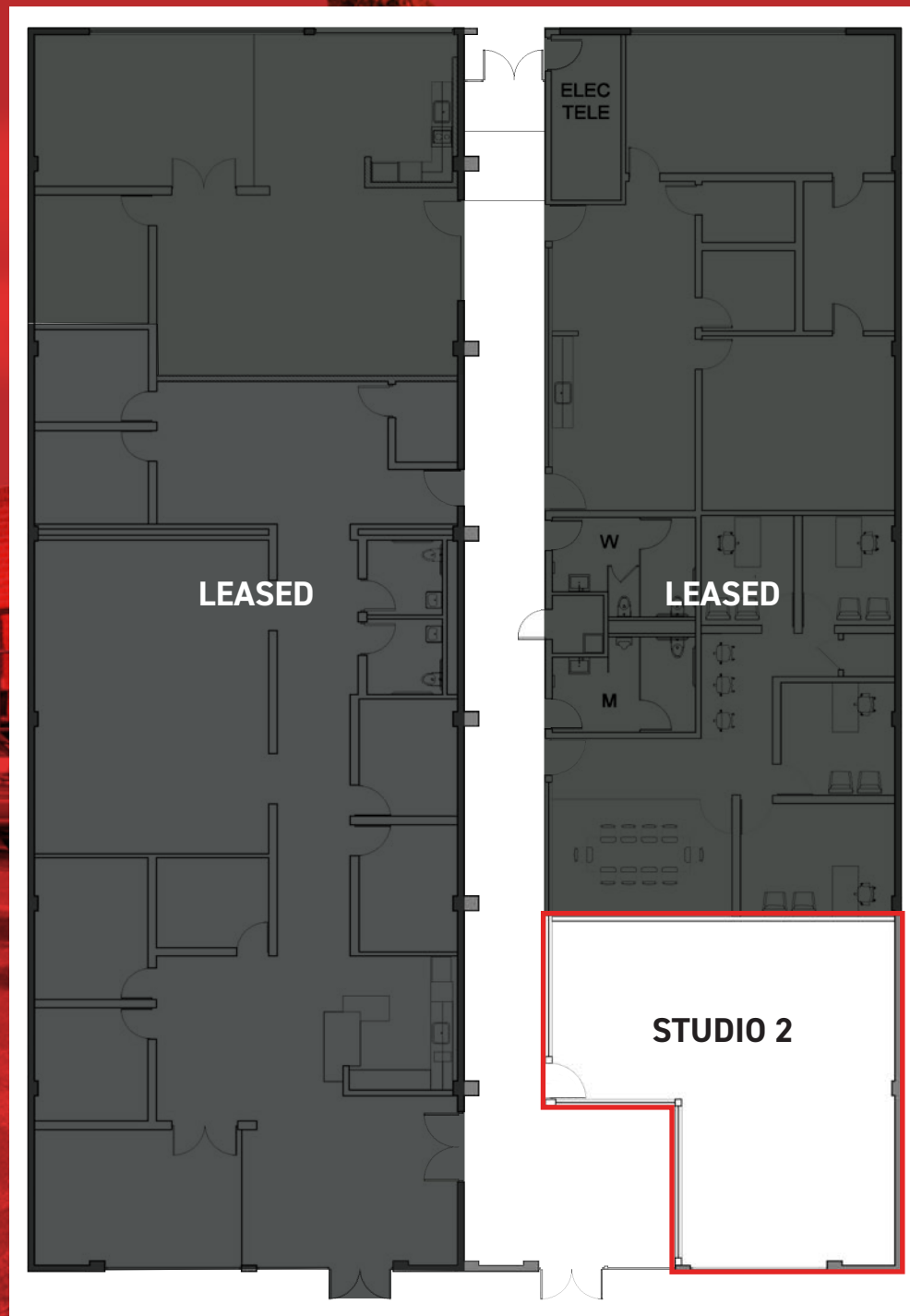
George Wilson
310.899.2738
gwilson@leewestla.com
AGT DRE 02090678

David Wilson
310.899.2707
dwilson@leewestla.com
AGT DRE 00822760

Brad McCoy
310.899.2730
bmccoy@leewestla.com
BKR DRE 01938098



A DIVISION OF



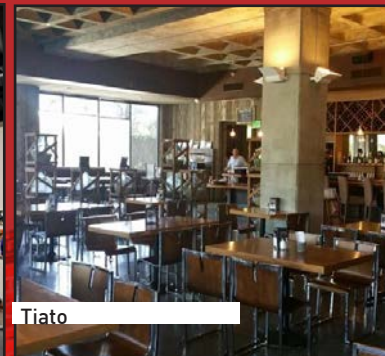
NEARBY AMENITIES SANTA MONICA



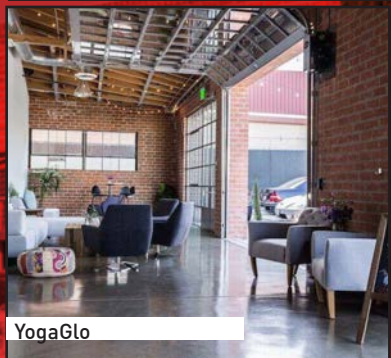
Bondi Harvest



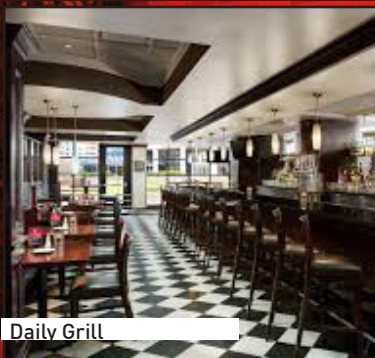
Bergamot Station



Tiato



YogaGlo



Daily Grill



Trader Joe's



Bergamot Cafe



Lunetta All Day



Milo + Olive



Santa Monica Brew Works



Lo/Cal Coffee



A DIVISION OF



83
79

BIKE SCORE:

BIKEABLE

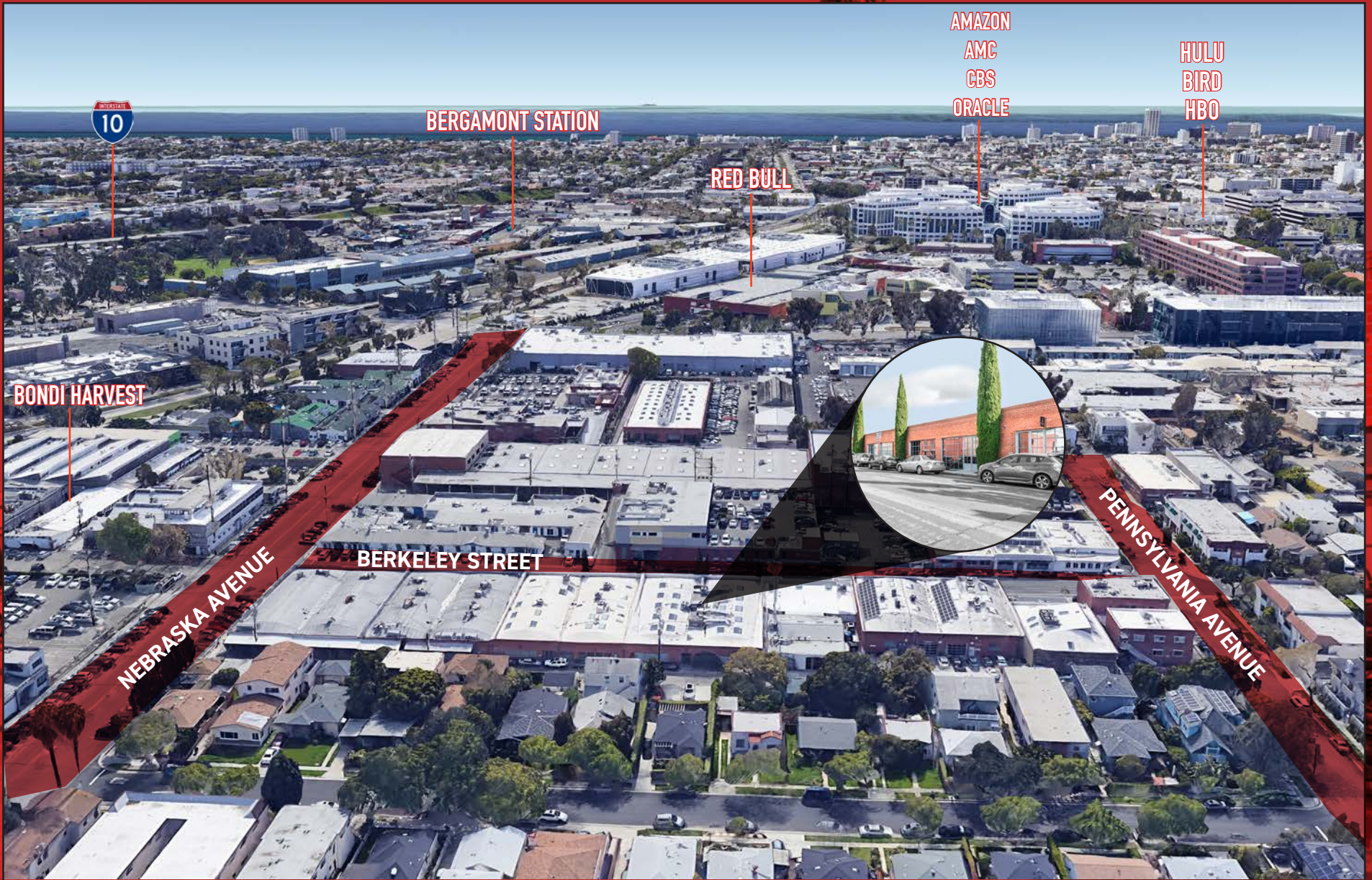
WALK SCORE:

VERY WALKABLE



TRANSIT:

MANY NEARBY PUBLIC
TRANSPORTATION OPTIONS
AVAILABLE



A DIVISION OF



George Wilson
310.899.2738

gwilson@leewestla.com
AGT DRE 02090678

David Wilson
310.899.2707

dwilson@leewestla.com
AGT DRE 00822760

Brad McCoy
310.899.2730

bmccoy@leewestla.com
BKR DRE 01938098