

# FOR LEASE

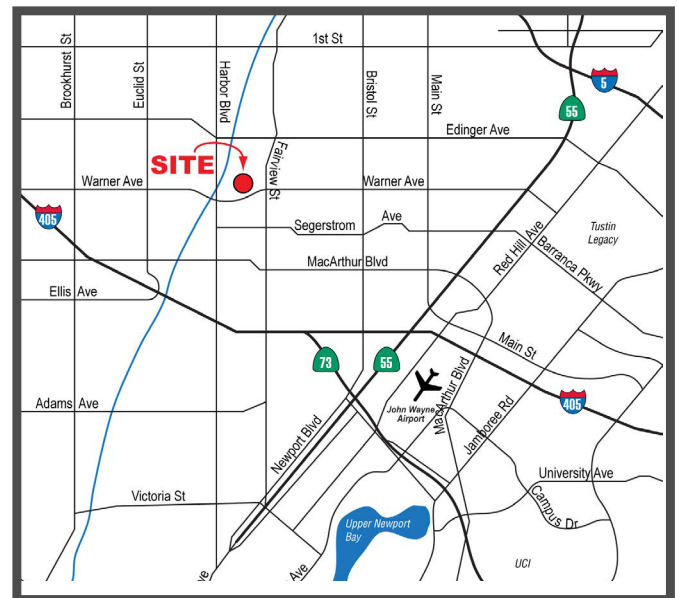
## WARNER BUSINESS PARK



3301-3321 W. Warner Avenue, Santa Ana, CA

### PROPERTY FEATURES

- Major Street Frontage
- Signage Available
- Well-Maintained Property
- Prime Santa Ana Location
- Ground Level Truck Doors
- Functional Office Layouts
- 18' Clear Height
- 3:1 Parking Ratio
- Excellent Freeway Access



**Skyler Serrano**  
Vice President  
Lic #01790959  
949.790.3180  
sserrano@leeirvine.com

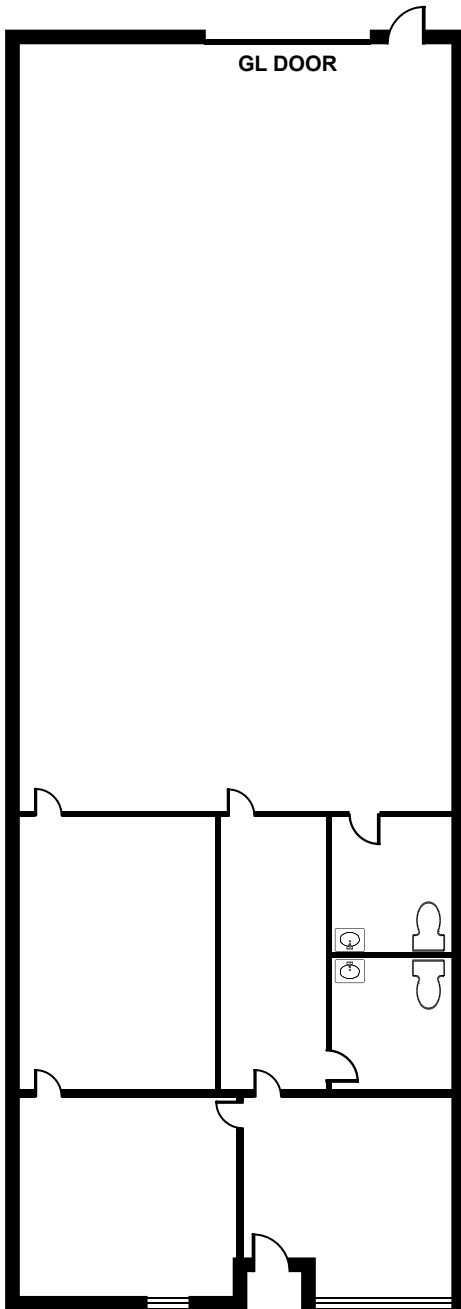
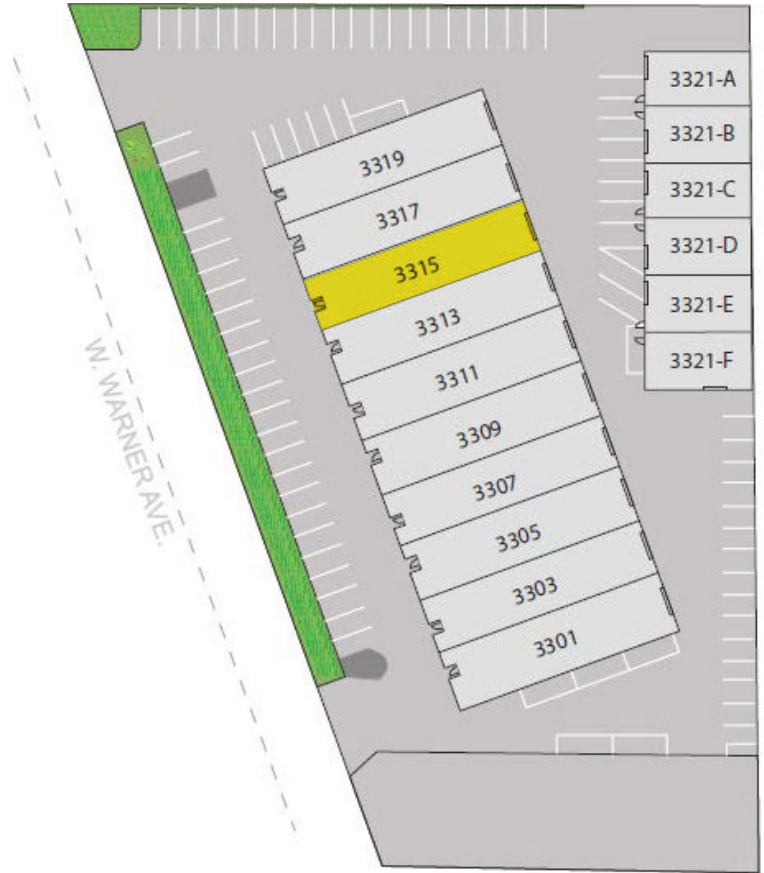
# FOR LEASE

## WARNER BUSINESS PARK



COMMERCIAL REAL ESTATE SERVICES

Location	Square Feet	Description
3315 Warner	2,300	<ul style="list-style-type: none"> <li>Major Street Frontage on Warner</li> <li>2 Private Offices, Reception, 2 Restrooms &amp; Warehouse</li> </ul>



\*Floor plan not drawn to scale.



**Skyler Serrano**  
**Vice President**  
**Lic #01790959**  
**949.790.3180**  
**sserrano@leeirvine.com**