

# AVAILABLE FOR SALE

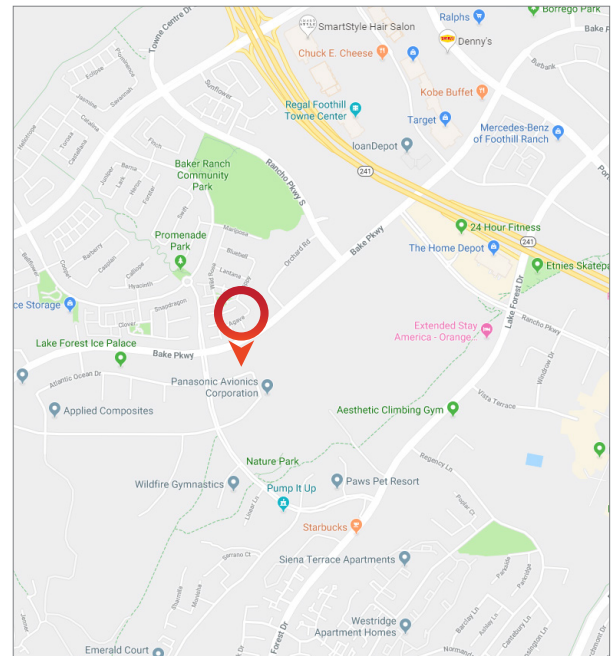
26170 Enterprise, Suite 500, Lake Forest, CA 92630

## OUTSTANDING OFFICE IMPROVEMENTS



### LISTING DATA

- ±3,564 SF Flex Condominium
- ±2,664 SF Office Area
- Bonus Approximately 356 SF Office Area
- Above Standard (Attorney Like) Improvements
- Ground Level Roll-Up Door
- 3 Parking Stalls per 1,000 SF of Space
- Sprinkled Building
- 250 Amps
- 3 Large Offices
- 2 Large Open Areas
- 3 Small Offices
- 2 Ground Floor Restrooms
- 1 Mezzanine Restroom
- Kitchen
- Furniture Available



For more information, contact:

Ted Rommel  
Senior Vice President  
CalDRE: 00830845  
office: (949) 790-3112  
trommel@leeirvine.com

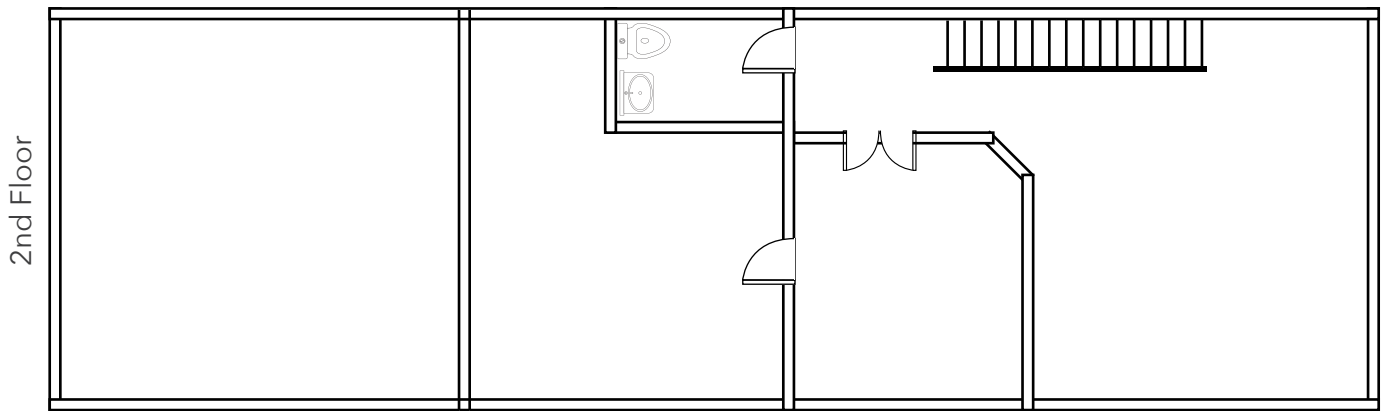
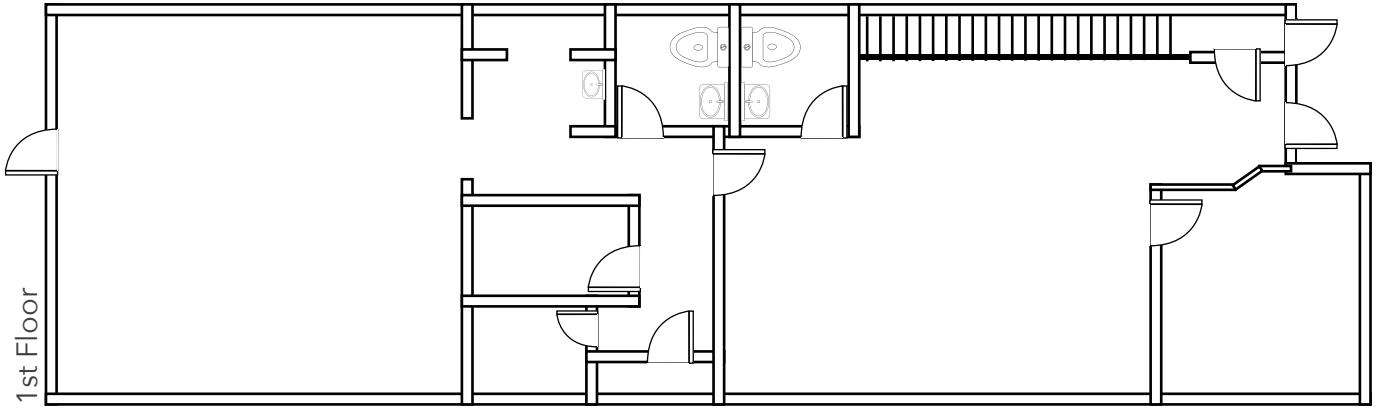
All information furnished regarding property for sale, rental or financing is from sources deemed reliable, but no warranty or representation is made to the accuracy thereof and same is submitted to errors, omissions, change of price, rental or other conditions prior to sale, lease or financing or withdrawal without notice. No liability of any kind is to be imposed on the broker herein.

# AVAILABLE FOR SALE

26170 Enterprise, Suite 500, Lake Forest, CA 92630

## OUTSTANDING OFFICE IMPROVEMENTS

### FLOOR PLAN



For more information, contact:

Ted Rommel  
Senior Vice President  
CalDRE: 00830845  
office: (949) 790-3112  
trommel@leeirvine.com

All information furnished regarding property for sale, rental or financing is from sources deemed reliable, but no warranty or representation is made to the accuracy thereof and same is submitted to errors, omissions, change of price, rental or other conditions prior to sale, lease or financing or withdrawal without notice. No liability of any kind is to be imposed on the broker herein.