

AVAILABLE FOR SALE

26170 Enterprise, Suite 400
Lake Forest, CA 92630

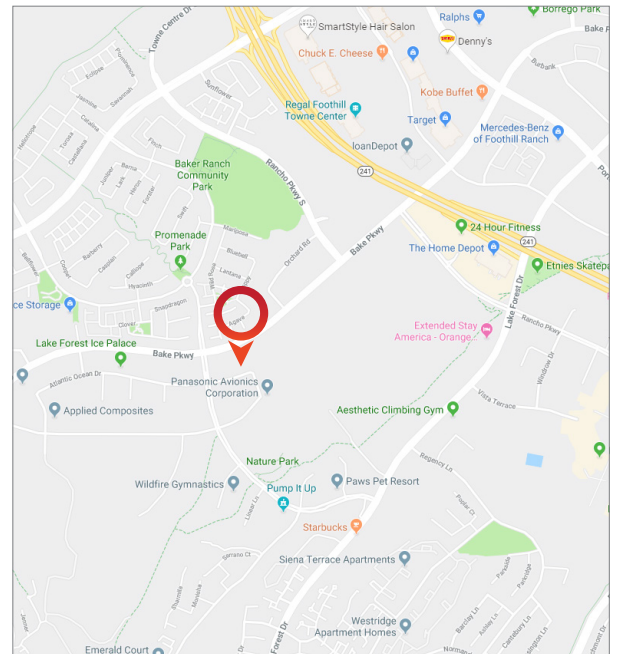


LISTING DATA

- ±3,564 SF Flex Condominium
- ±2,183 SF Office Area
- 3:1 Parking Ratio
- Fully Sprinklered
- 22' Clearance
- Ground Level Truck Door
- Two (2) Restrooms on First Floor
- Newer Construction
- Two Entries Allows Divisible Spaces
- Possible Mezzanine Restroom
- 250 Amps

For more information, contact:

Ted Rommel
Senior Vice President
CalDRE: 00830845
office: (949) 790-3112
trommel@leeirvine.com

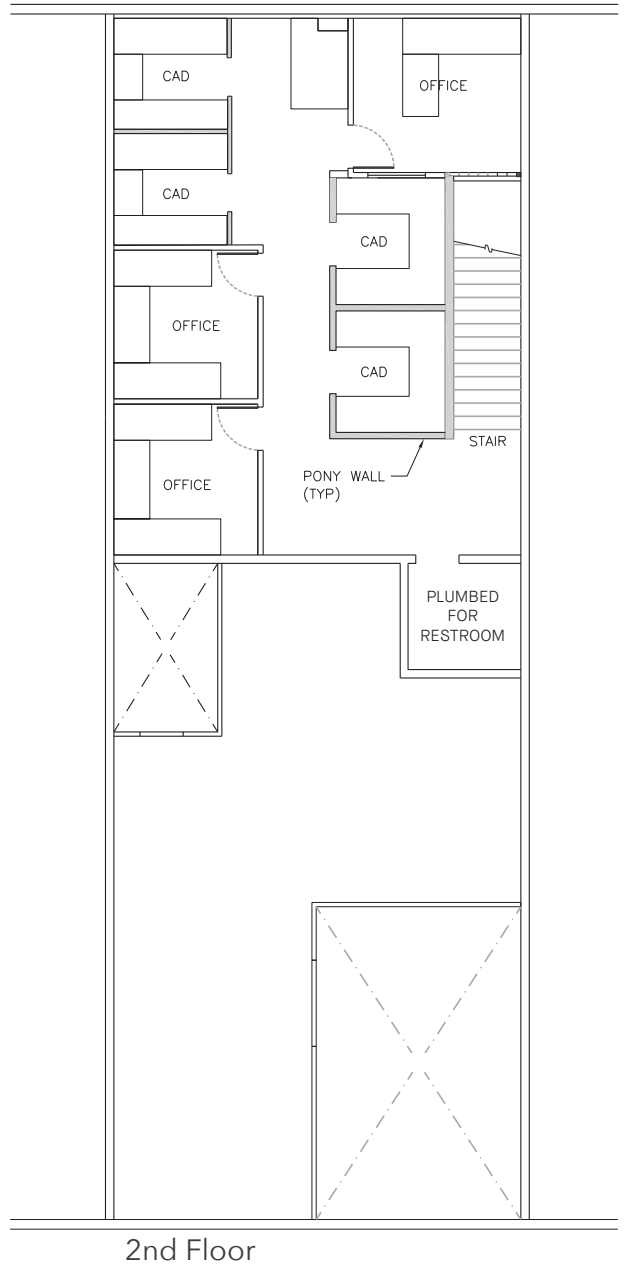
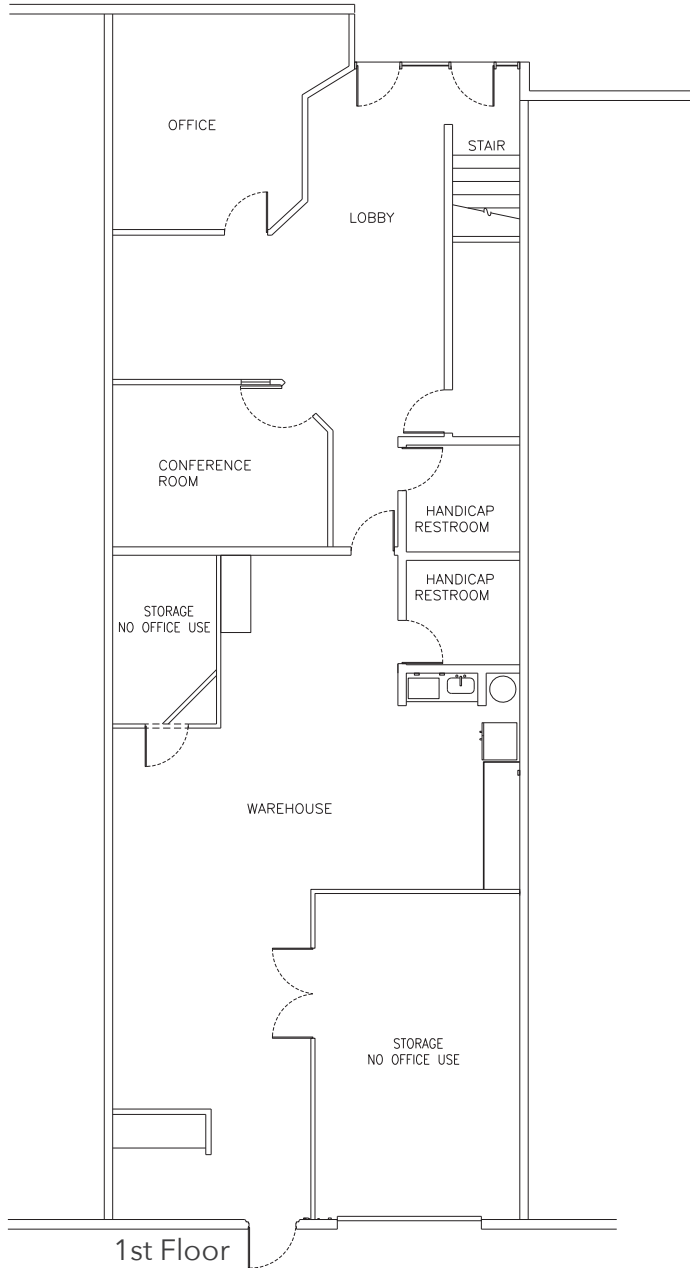


All information furnished regarding property for sale, rental or financing is from sources deemed reliable, but no warranty or representation is made to the accuracy thereof and same is submitted to errors, omissions, change of price, rental or other conditions prior to sale, lease or financing or withdrawal without notice. No liability of any kind is to be imposed on the broker herein.

AVAILABLE FOR SALE

26170 Enterprise, Suite 400
Lake Forest, CA 92630

FLOOR PLAN



For more information, contact:

Ted Rommel
Senior Vice President
CalDRE: 00830845
office: (949) 790-3112
trommel@leeirvine.com

All information furnished regarding property for sale, rental or financing is from sources deemed reliable, but no warranty or representation is made to the accuracy thereof and same is submitted to errors, omissions, change of price, rental or other conditions prior to sale, lease or financing or withdrawal without notice. No liability of any kind is to be imposed on the broker herein.