

FOR SUBLEASE
FAITH MAXWELL BUSINESS PARK
IN THE IRVINE SPECTRUM

6,230 SQUARE FEET



500 WALD | BLDG. F | IRVINE SPECTRUM

PROPERTY FEATURES

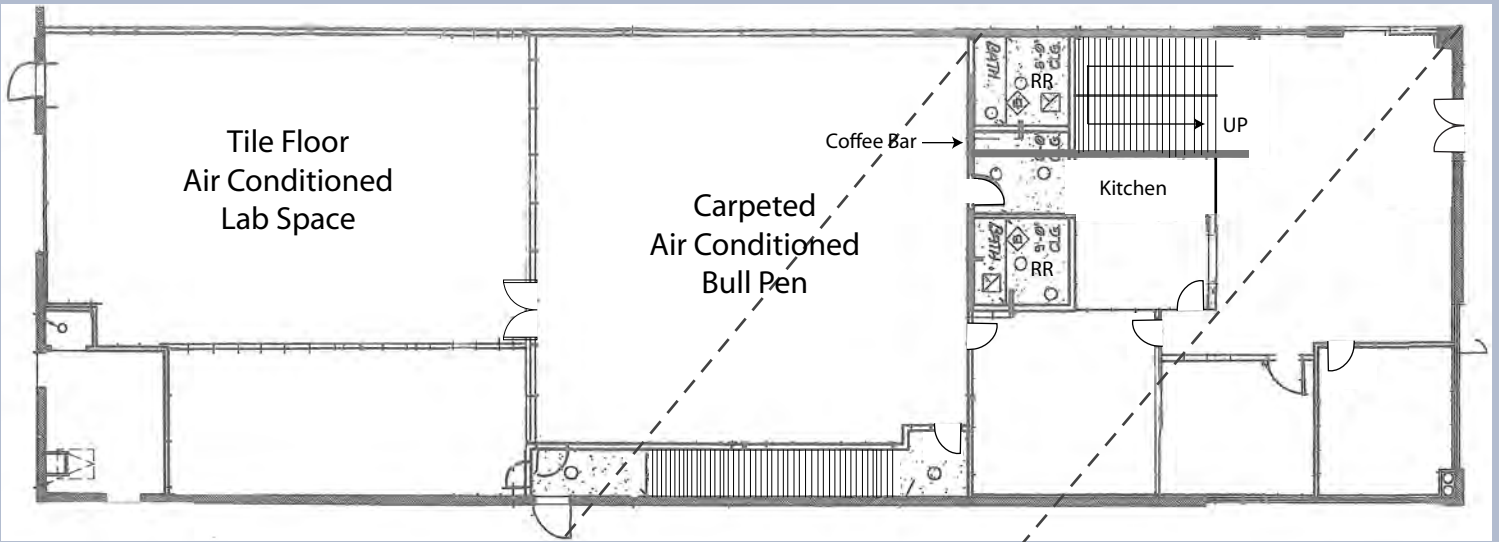
- High-image, R&D Building
- 100% HVAC
- 1,494 SF Mezzanine
- 4 offices, large reception and 3 large bull pens
- 1 Ground Level Door
- 3:1 Parking
- Corner Building
- Spectrum 5 Location
- Sublease ends July 21, 2023

EXCLUSIVE AGENT:

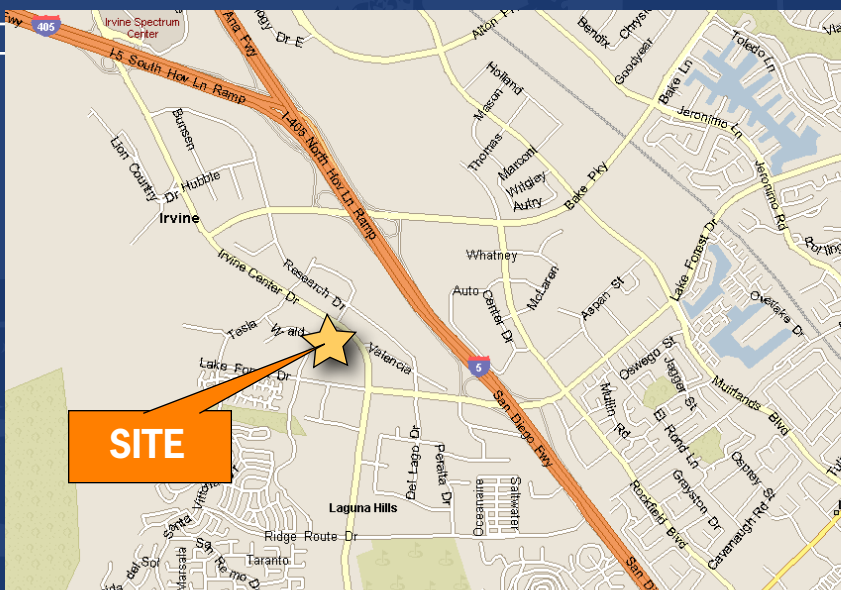
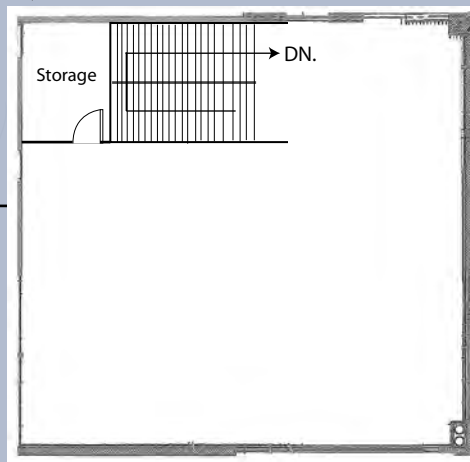
TED ROMMEL
Senior Vice President
(949) 790-3112
trommel@lee-associates.com

Lee & Associates - Irvine, Inc.
9838 Research Drive
Irvine, California 92618
www.lee-associates.com

FOR SUBLEASE
500 WALD, BLDG. F
6,230 SQUARE FEET



1,494 SF Mezzanine



EXCLUSIVE AGENT:

TED ROMMEL
Senior Vice President
(949) 790-3112
trommel@lee-associates.com

Lee & Associates - Irvine, Inc.
111 Pacifica, Suite 310
Irvine, California 92618
www.lee-associates.com